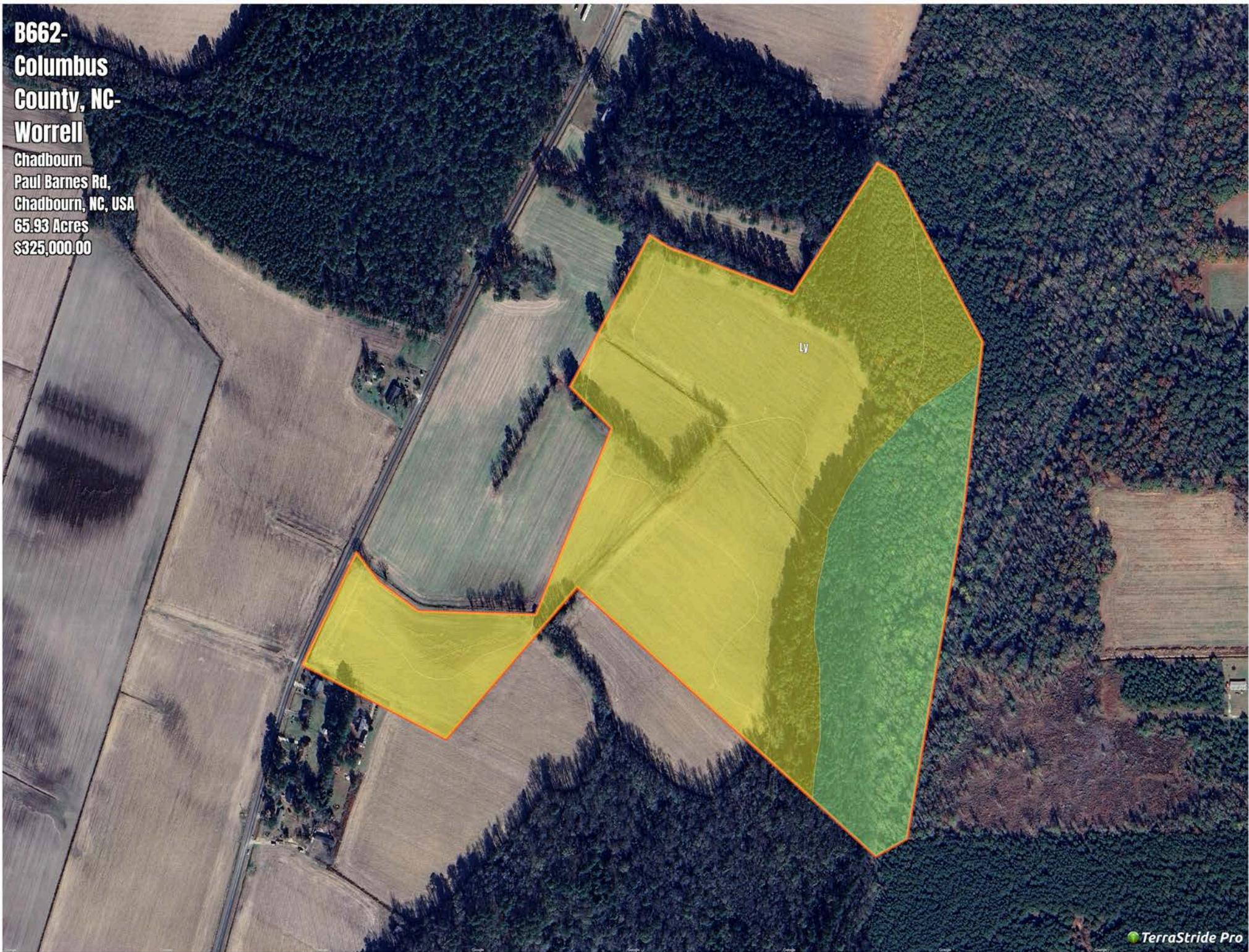


**B662-
Columbus
County, NC-
Worrell**

Chadbourn
Paul Barnes Rd,
Chadbourn, NC, USA
65.93 Acres
\$325,000.00



B662-Columbus County, NC-Worrell

Soil Report

Symbol	Map Unit Description	Farmland class	Area (AC)	Available Water Storage (0-150cm - Weighted Average)	Flooding Frequency (Maximum)	Drainage Class (Dominant Condition)	Drainage Class (Wettest Component)	Hydric Classification	Water Table Depth (Annual Minimum)	Water Table Depth (April to June Minimum)	Bedrock Depth (Minimum)	Soil Order
Ly	Lynchburg fine sandy loam	Prime farmland if drained	0	18.8	None	Somewhat poorly drained	Somewhat poorly drained	7	15	76	0	Ultisols
Ra	Rains fine sandy loam	Prime farmland if drained	0	23.6	None	Poorly drained	Poorly drained	95	15	46	0	Ultisols
Mk	Muckalee sandy loam, frequently flooded	Not prime farmland	0	16.2	Frequent	Poorly drained	Poorly drained	80	15	23	0	Entisols
NoA	Norfolk loamy fine sand, 0 to 2 percent slopes	All areas are prime farmland	0	19.3	None	Well drained	Well drained	5	122	152	0	Ultisols
GoA	Goldsboro fine sandy loam, 0 to 2 percent slopes	All areas are prime farmland	0	20.5	None	Moderately well drained	Moderately well drained	5	61	91	0	Ultisols
NoB	Norfolk loamy fine sand, 2 to 6 percent slopes	All areas are prime farmland	0	19.1	None	Well drained	Well drained	5	122	152	0	Ultisols