

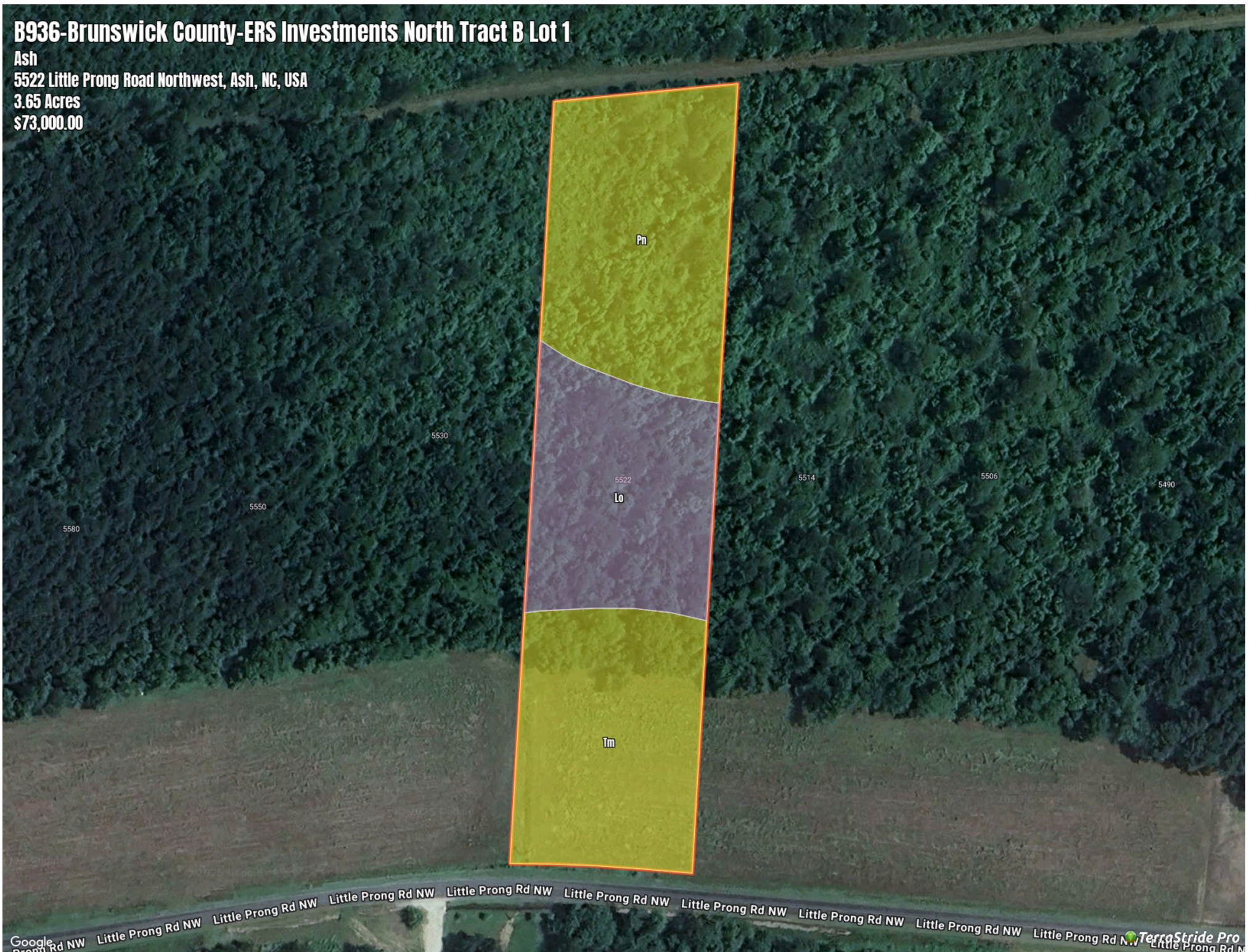
# B936-Brunswick County-ERS Investments North Tract B Lot 1

Ash

5522 Little Prong Road Northwest, Ash, NC, USA

3.65 Acres

\$73,000.00



# B936-Brunswick County-ERS Investments North Tract B Lot 1

## Soil Report

Symbol	Map Unit Description	Farmland class	Area (AC)	Available Water Storage (0-150cm - Weighted Average)	Flooding Frequency (Maximum)	Drainage Class (Dominant Condition)	Drainage Class (Wettest Component)	Hydric Classification	Water Table Depth (Annual Minimum)	Water Table Depth (April to June Minimum)	Bedrock Depth (Minimum)	Soil Order
Pn	Pantego mucky loam	Prime farmland if drained	0	29.1	None	Very poorly drained	Very poorly drained	90	0	81	0	Ultisols
Tm	Tomahawk loamy fine sand	Farmland of statewide importance	0	12.6	None	Moderately well drained	Moderately well drained	7	61	76	0	Ultisols
LO	Leon fine sand	Farmland of unique importance	0	10.3	None	Poorly drained	Poorly drained	85	15	15	0	Spodosols