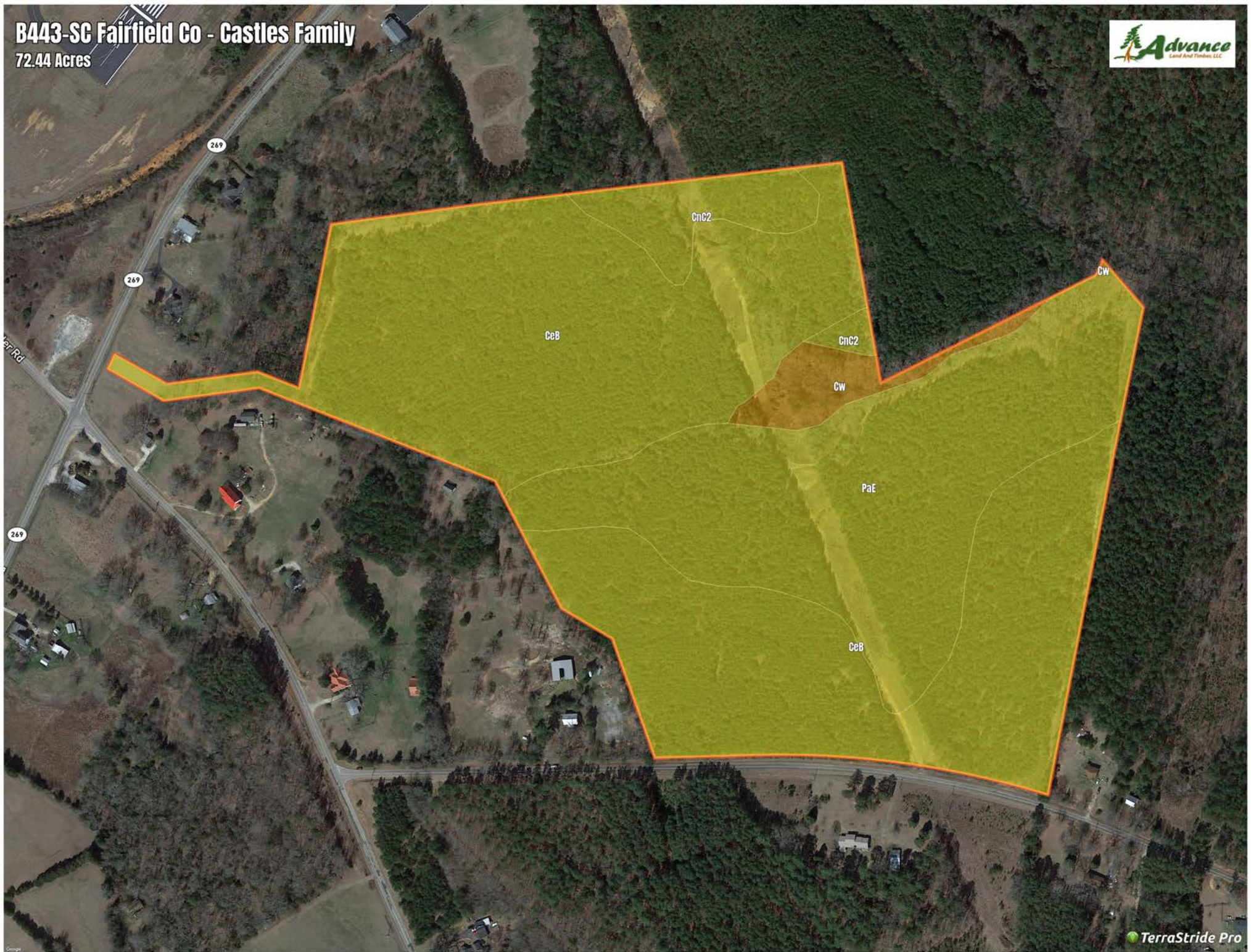


B443-SC Fairfield Co - Castles Family

72.44 Acres



B443-SC Fairfield Co - Castles Family

Soil Report

Symbol	Map Unit Description	Farm Land Class	Area (AC)	Available Water Storage (0-150cm - Weighted Average)	Flooding Frequency (Maximum)	Drainage Class (Dominant Condition)	Drainage Class (Wettest Component)	Hydric Classification	Water Table Depth (Annual Minimum)	Water Table Depth (April to June Minimum)	Bedrock Depth (Minimum)	Soil Order
CeB	Cecil sandy loam, 2 to 6 percent slopes	All areas are prime farmland	0	17.6	None	Well drained	Well drained	0	0	0	0	Ultisols
PaE	Paulet sandy loam, 10 to 25 percent slopes	Not prime farmland	0	19.6	None	Well drained	Well drained	0	0	0	0	Ultisols
CnC2	Cecil sandy clay loam, 6 to 10 percent slopes, eroded	Not prime farmland	0	21.0	None	Well drained	Well drained	0	0	0	0	Ultisols
CW	Chewacla loam, 0 to 2 percent slopes, frequently flooded	Prime farmland if drained and either protected from flooding or not frequently flooded	0	26.9	Frequent	Somewhat poorly drained	Somewhat poorly drained	5	25	0	0	Inceptisols