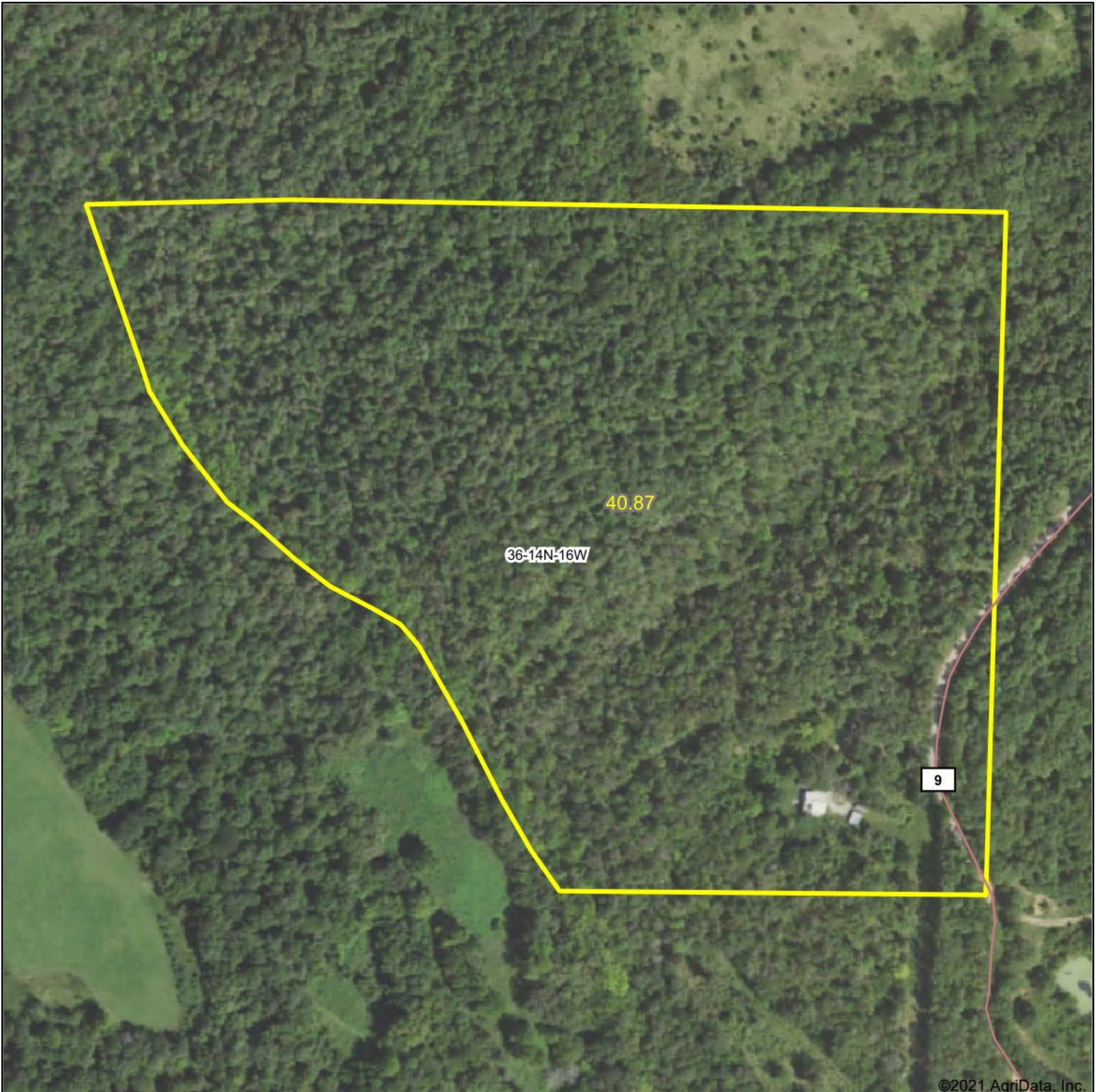
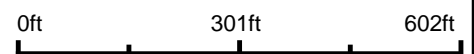


Aerial Map



Map Center: 35° 48' 52.84, -92° 38' 27.6




MOSSY OAK.
PROPERTIES
DELTA LAND MANAGEMENT CO.
America's Land Specialist

36-14N-16W
Searcy County
Arkansas



9/12/2021

Maps Provided By:
 **surety**[®]
CUSTOMIZED ONLINE MAPPING
© AgriData, Inc. 2021 www.AgriDataInc.com