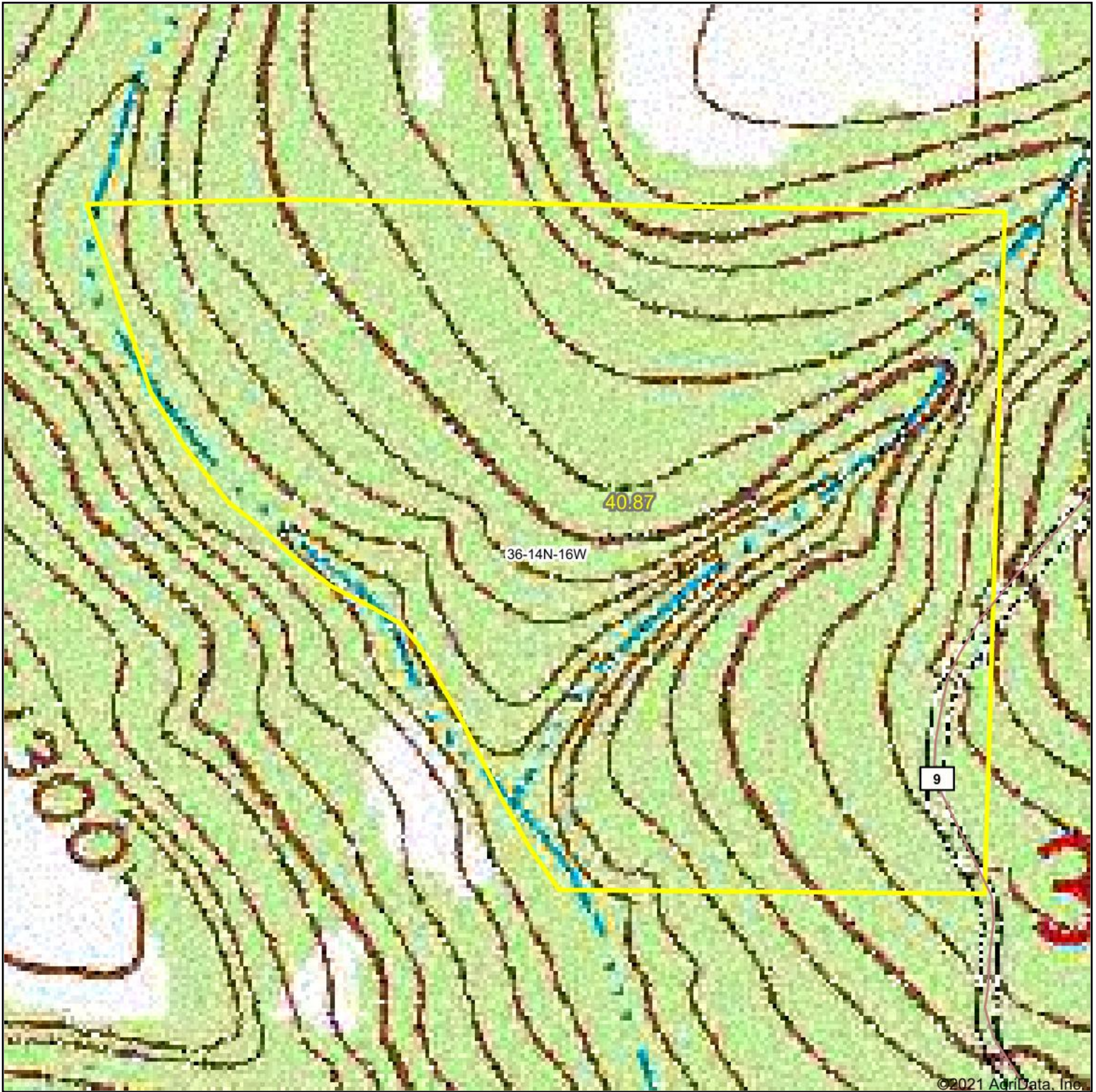
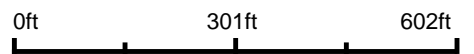


Topography Map



map center: 35° 48' 52.84, -92° 38' 27.6



MOSSY OAK
PROPERTIES
DELTA LAND MANAGEMENT CO.
America's Land Specialist

36-14N-16W
Searcy County
Arkansas



Maps Provided By:
surety
CUSTOMIZED ONLINE MAPPING

© AgriData, Inc. 2021 www.AgriDataInc.com

9/12/2021