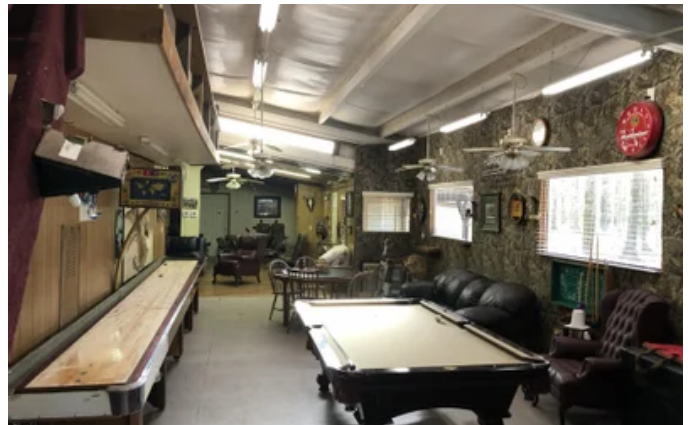


Duck Hunting Camp at Long Pond
70 Green Head Lane
Altheimer, AR 72004

\$137,000
1.050± Acres
Arkansas County



Duck Hunting Camp at Long Pond Altheimer, AR / Arkansas County

SUMMARY

Address

70 Green Head Lane

City, State Zip

Altheimer, AR 72004

County

Arkansas County

Type

Residential Property, Hunting Land

Latitude / Longitude

34.3192636 / -91.8473565

Dwelling Square Feet

2320

Bedrooms / Bathrooms

5 / 3

Acreage

1.050

Price

\$137,000

Property Website

<https://arkansaslandforsale.com/property/duck-hunting-camp-at-long-pond-arkansas-arkansas/19898/>



Duck Hunting Camp at Long Pond Altheimer, AR / Arkansas County

PROPERTY DESCRIPTION

This 2320 +/- sq/ft hunting camp is located on the southern end of Bayou Meto Wildlife Management Area right down the road from the Long Pond access. The camp house features 5 bedrooms, 3 full baths, living area, gaming area, mud room, storage facility, two covered boat storage sheds, and a large covered porch out back. If your looking for a flooded timber hunting experience, this is it. This duck hunting camp is only half a mile from Long Pond access which offers excellent flooded timber duck hunting not to mention great deer hunting. To schedule a showing, please contact Exclusive listing agent Lance Talbert at [501-951-3073](tel:501-951-3073).



**Duck Hunting Camp at Long Pond
Alzheimer, AR / Arkansas County**





Locator Maps



Aerial Maps



Duck Hunting Camp at Long Pond
Altheimer, AR / Arkansas County

LISTING REPRESENTATIVE

For more information contact:



Representative

Lance Talbert

Mobile

(501) 951-3073

Email

ltalbert@mossyoakproperties.com

Address

2024 North Main Street

City / State / Zip

North Little Rock, AR 72114

NOTES



NOTES

[illegible]

MORE INFO ONLINE:
ArkansasLandForSale.com

DISCLAIMERS

Information in this brochure is provided solely for information purposes and does not constitute an offer to sell or advertise real estate outside the states in which broker or agent licensed. The information presented has been obtained from sources deemed to be reliable, but is not guaranteed or warranted by the agent, broker, or the sellers of these properties. This offering is subject to errors, omissions, prior sale, price change, correction or withdrawal from the market without notice. All references to age, square footage, income, expenses, acreage, carrying capacity, and land classification, etc. are approximate. Prospective buyers are chargeable with and expected to conduct their own independent investigation of the information and the property and to rely only on those results. Sellers reserve the right to accept or reject any and all offers without liability to any buyer or cooperating broker.

Maps are provided for illustration purposes only, the accuracy is not warranted. Parcels on interactive maps are not adjusted to match aerial backgrounds. This information is for reference purposes only and is not a legal document. Data maps contain errors. The seller and seller's agent are making known to all potential buyers that there may be variations between the location of the existing fence lines and the legal description of the deeded property. Seller and seller's agent make no warranties with regard to the location of the fence lines in relationship to the deeded property lines, nor does the Seller make any warranties or representations with regard to the specific acreage contained within the fenced property lines. Seller is selling the property in an "as is" condition, which includes the location of the fences as they exist. Boundaries shown on the accompanying maps are approximate, based on county parcel data. The maps are not to scale. The accuracy of the maps is not guaranteed. Prospective buyers are encouraged to verify fence lines, deeded property lines and acreages using a licensed surveyor at their own expense.



Mossy Oak Properties Delta Land Management Co. LLC
2024 North Main Street
North Little Rock, AR 72114
(501) 604-4565
ArkansasLandForSale.com

