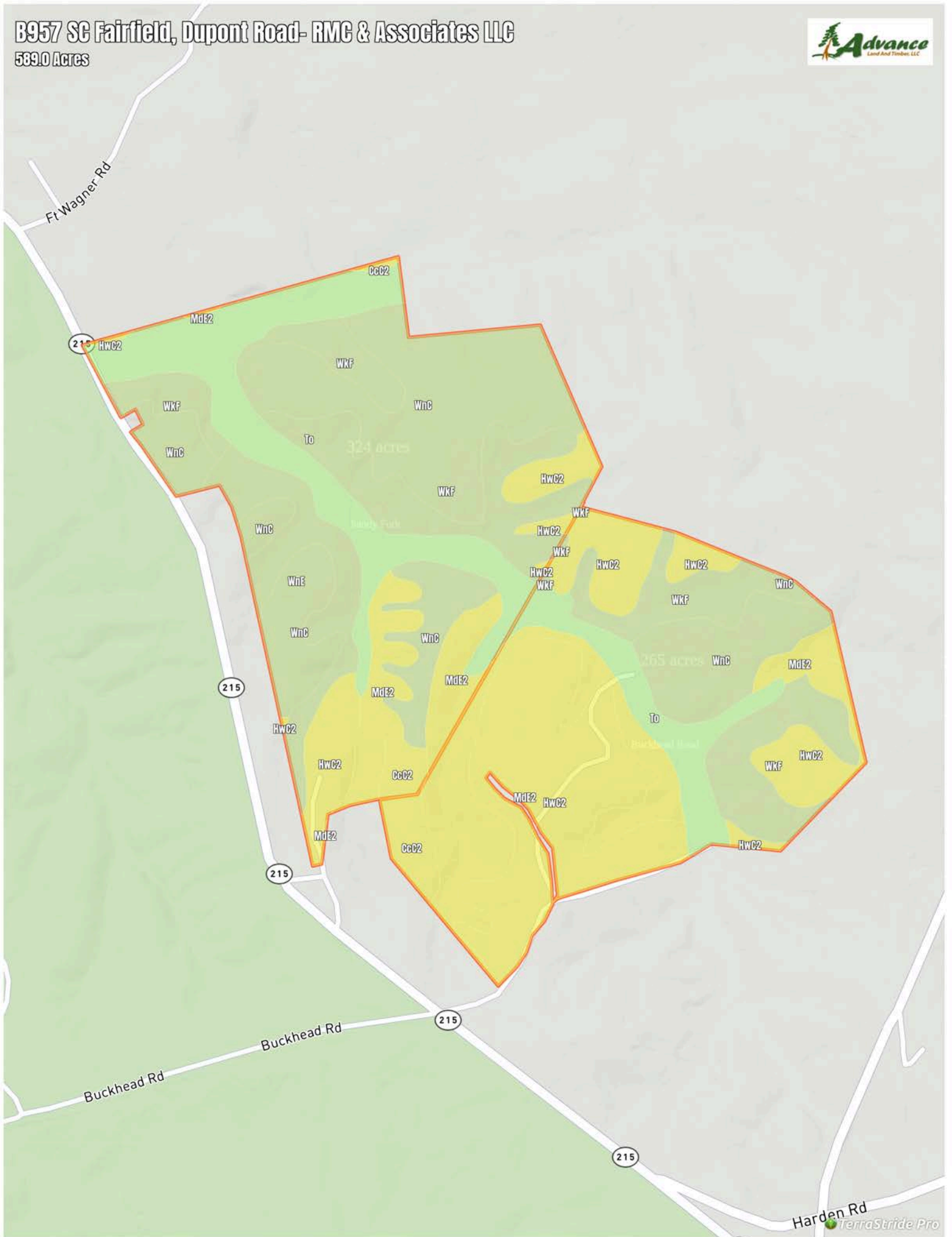


# B957 SC Fairfield, Dupont Road- RMC & Associates LLC

539.0 Acres



# B957 SC Fairfield, Dupont Road- RMC & Associates LLC

## Soil Report

Symbol	Map Unit Description	Farmland class	Area (AC)	Available Water Storage (0-150cm - Weighted Average)	Flooding Frequency (Maximum)	Drainage Class (Dominant Condition)	Drainage Class (Wettest Component)	Hydric Classification	Water Table Depth (Annual Minimum)	Water Table Depth (April to June Minimum)	Bedrock Depth (Minimum)	Soil Order
WnC	Winnsboro sandy loam, 6 to 10 percent slopes	Not prime farmland	0	20.4	None	Well drained	Well drained	0	0	0	130	Alfisols
HwC2	Hiwassee sandy clay loam, 6 to 10 percent slopes, eroded	Not prime farmland	0	20.5	None	Well drained	Well drained	0	0	0	0	Ultisols
WkF	Wilkes sandy loam, 15 to 40 percent slopes	Not prime farmland	0	9.2	None	Well drained	Well drained	0	0	0	58	Alfisols
To	Toccoa loam	Prime farmland if protected from flooding or not frequently flooded during the g	0	16.7	Occasional	Moderately well drained	Moderately well drained	5	114	114	0	Entisols
MdE2	Madison sandy clay loam, 10 to 25 percent slopes, eroded	Not prime farmland	0	21.3	None	Well drained	Well drained	0	0	0	0	Ultisols
WnE	Winnsboro sandy loam, 10 to 25 percent slopes	Not prime farmland	0	20.4	None	Well drained	Well drained	0	0	0	130	Alfisols
CcC2	Cataula sandy clay loam, 6 to 10 percent slopes, eroded	Not prime farmland	0	18.2	None	Moderately well drained	Moderately well drained	0	99	99	0	Ultisols