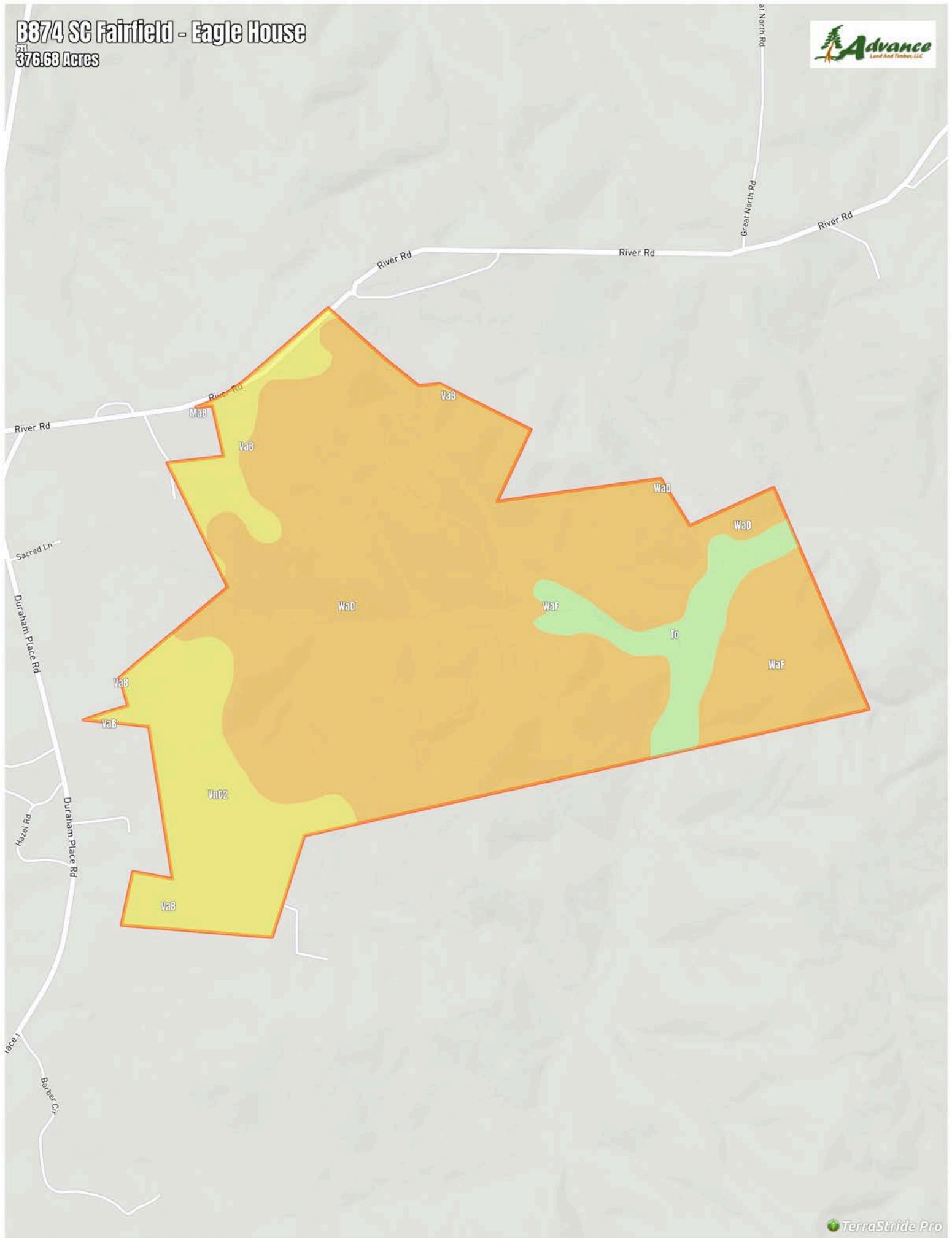


B874 SC Fairfield - Eagle House

376.68 Acres



B874 SC Fairfield - Eagle House

Soil Report

Symbol	Map Unit Description	Farmland class	Area (AC)	Available Water Storage (0-150cm - Weighted Average)	Flooding Frequency (Maximum)	Drainage Class (Dominant Condition)	Drainage Class (Wettest Component)	Hydric Classification	Water Table Depth (Annual Minimum)	Water Table Depth (April to June Minimum)	Bedrock Depth (Minimum)	Soil Order
WaD	Waterree-Rion complex, 6 to 15 percent slopes	Not prime farmland	0	10.5	None	Well drained	Well drained	0	0	0	68	Inceptisols
WaF	Waterree-Rion complex, 15 to 40 percent slopes	Not prime farmland	0	10.5	None	Well drained	Well drained	0	0	0	68	Inceptisols
VnC2	Vance sandy clay loam, 6 to 10 percent slopes, eroded	Not prime farmland	0	19.3	None	Well drained	Well drained	0	0	0	0	Ultisols
VaB	Vance sandy loam, 2 to 6 percent slopes	All areas are prime farmland	0	19.1	None	Well drained	Well drained	0	0	0	0	Ultisols
To	Toccoa loam	Prime farmland if protected from flooding or not frequently flooded during the g	0	16.7	Occasional	Moderately well drained	Moderately well drained	5	114	114	0	Entisols
MaB	Madison sandy loam, 2 to 6 percent slopes	All areas are prime farmland	0	21.2	None	Well drained	Well drained	0	0	0	0	Ultisols