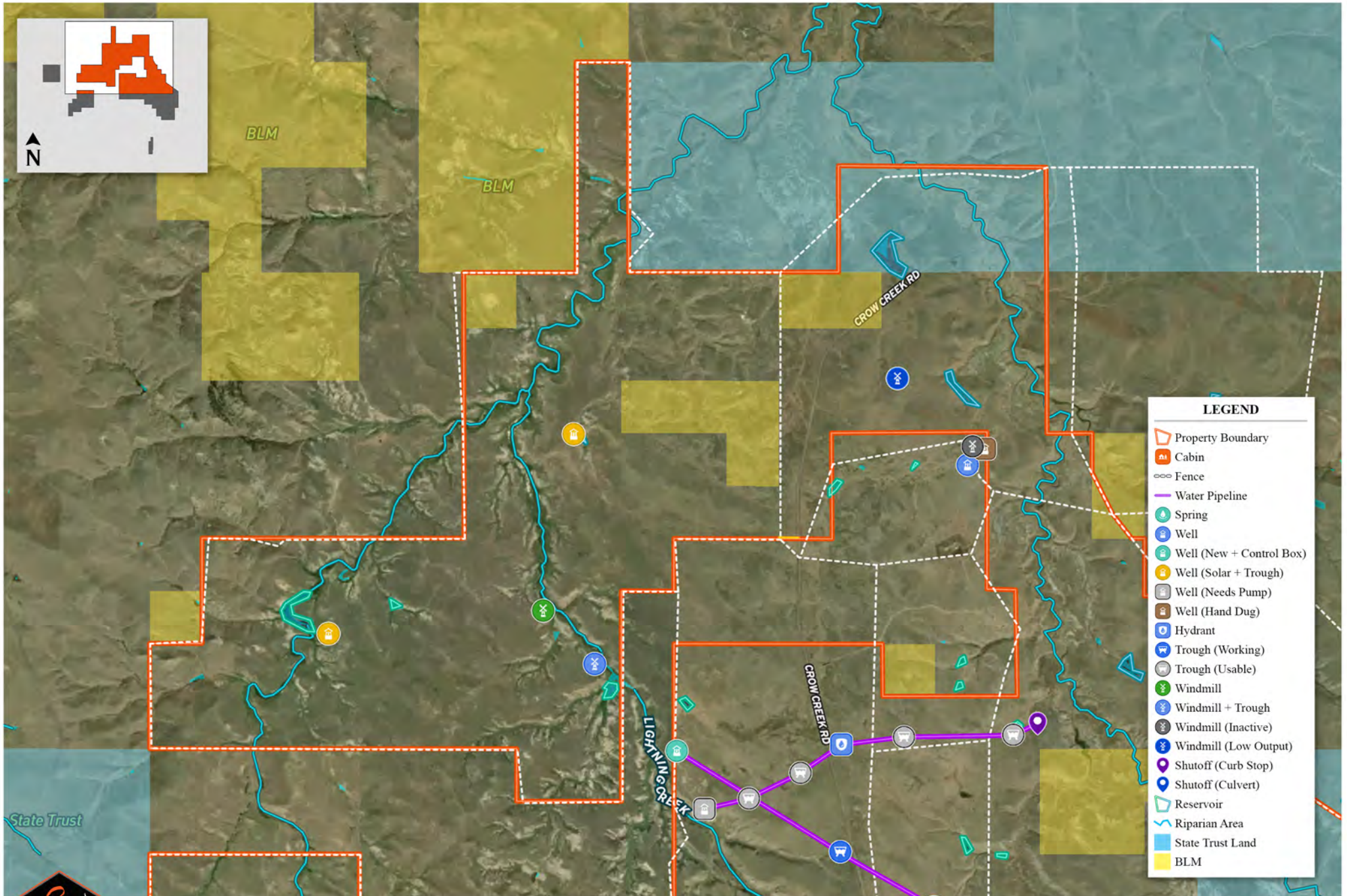
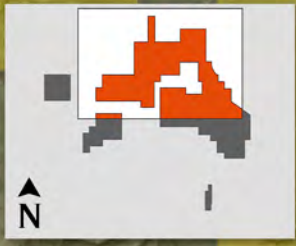


PAINTED SKY RANCH
Hammond, Montana | 9,893± Acres

www.SJSportingProperties.com

The information contained here is obtained by the broker from sellers, owners, or other resources. This information is considered reliable, neither this broker nor owners make any guarantee, warranty or representation as to correctness of any data or descriptions and the accuracy of such statements. The correctness and/or accuracy of any and all statements should be determined through independent investigation made by the prospective purchaser. This is not intended to replace a survey.



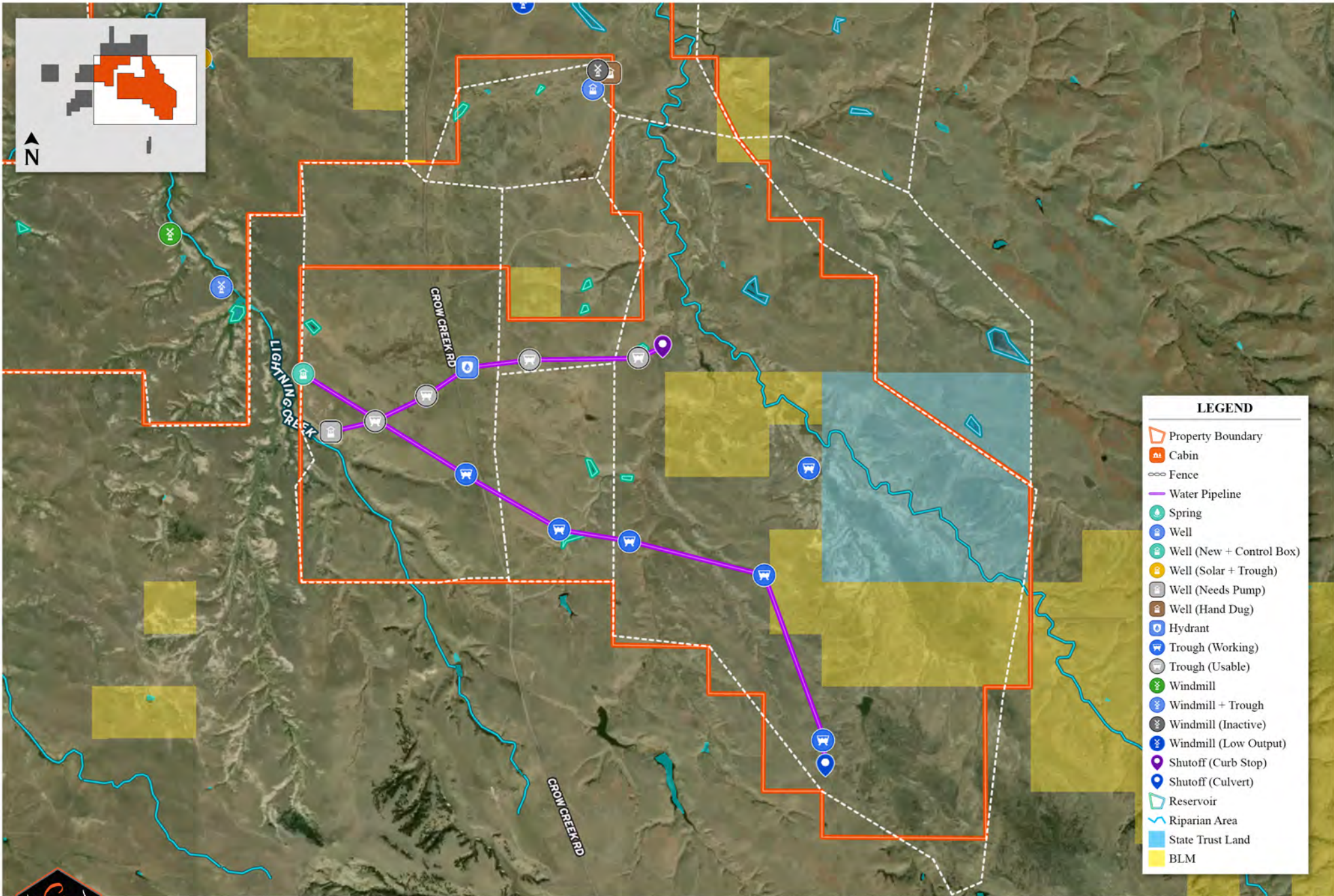
LEGEND	
	Property Boundary
	Cabin
	Fence
	Water Pipeline
	Spring
	Well
	Well (New + Control Box)
	Well (Solar + Trough)
	Well (Needs Pump)
	Well (Hand Dug)
	Hydrant
	Trough (Working)
	Trough (Usable)
	Windmill
	Windmill + Trough
	Windmill (Inactive)
	Windmill (Low Output)
	Shutoff (Curb Stop)
	Shutoff (Culvert)
	Reservoir
	Riparian Area
	State Trust Land
	BLM



PAINTED SKY RANCH
Hammond, Montana | 9,893± Acres

www.SJSportingProperties.com

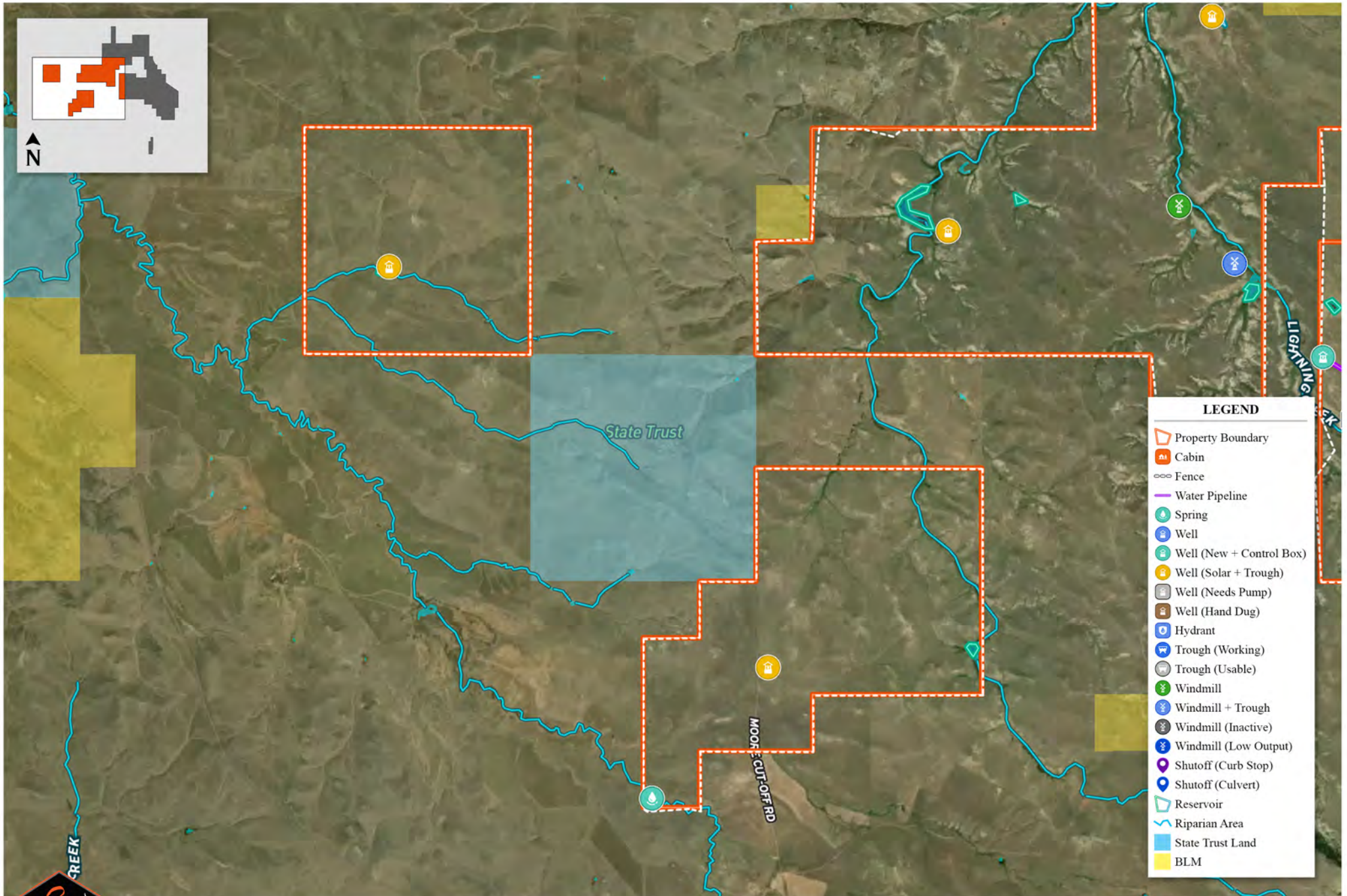
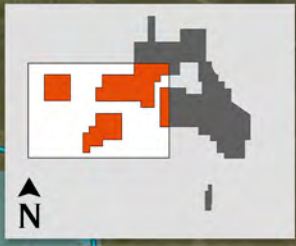
The information contained here is obtained by the broker from sellers, owners, or other resources. This information is considered reliable, neither this broker nor owners make any guarantee, warranty or representation as to correctness of any data or descriptions and the accuracy of such statements. The correctness and/or accuracy of any and all statements should be determined through independent investigation made by the prospective purchaser. This is not intended to replace a survey.



PAINTED SKY RANCH
Hammond, Montana | 9,893± Acres

www.SJSportingProperties.com

The information contained here is obtained by the broker from sellers, owners, or other resources. This information is considered reliable, neither this broker nor owners make any guarantee, warranty or representation as to correctness of any data or descriptions and the accuracy of such statements. The correctness and/or accuracy of any and all statements should be determined through independent investigation made by the prospective purchaser. This is not intended to replace a survey.



LEGEND

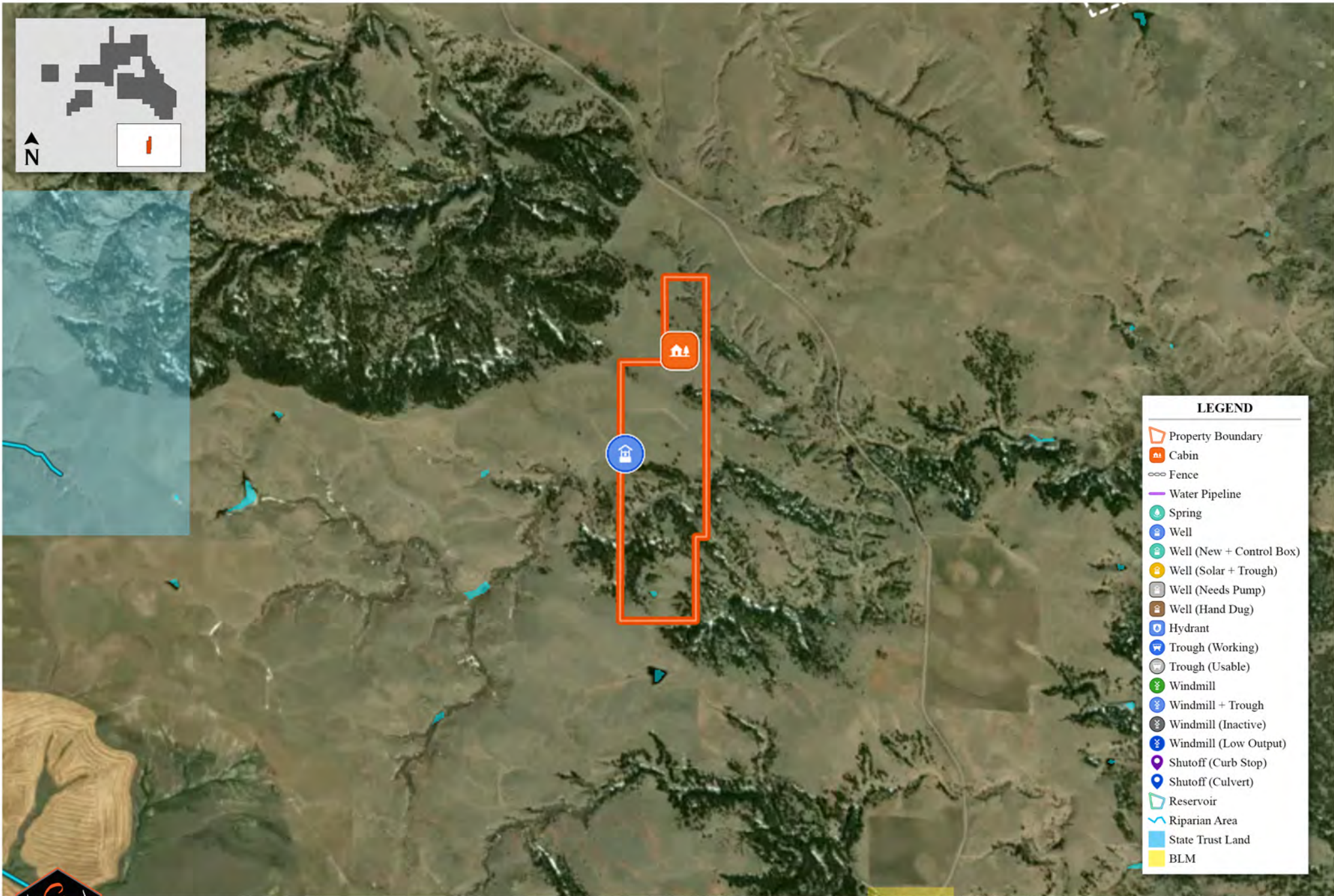
- Property Boundary
- Cabin
- Fence
- Water Pipeline
- Spring
- Well
- Well (New + Control Box)
- Well (Solar + Trough)
- Well (Needs Pump)
- Well (Hand Dug)
- Hydrant
- Trough (Working)
- Trough (Usable)
- Windmill
- Windmill + Trough
- Windmill (Inactive)
- Windmill (Low Output)
- Shutoff (Curb Stop)
- Shutoff (Culvert)
- Reservoir
- Riparian Area
- State Trust Land
- BLM



PAINTED SKY RANCH
Hammond, Montana | 9,893± Acres

www.SJSportingProperties.com

The information contained here is obtained by the broker from sellers, owners, or other resources. This information is considered reliable, neither this broker nor owners make any guarantee, warranty or representation as to correctness of any data or descriptions and the accuracy of such statements. The correctness and/or accuracy of any and all statements should be determined through independent investigation made by the prospective purchaser. This is not intended to replace a survey.



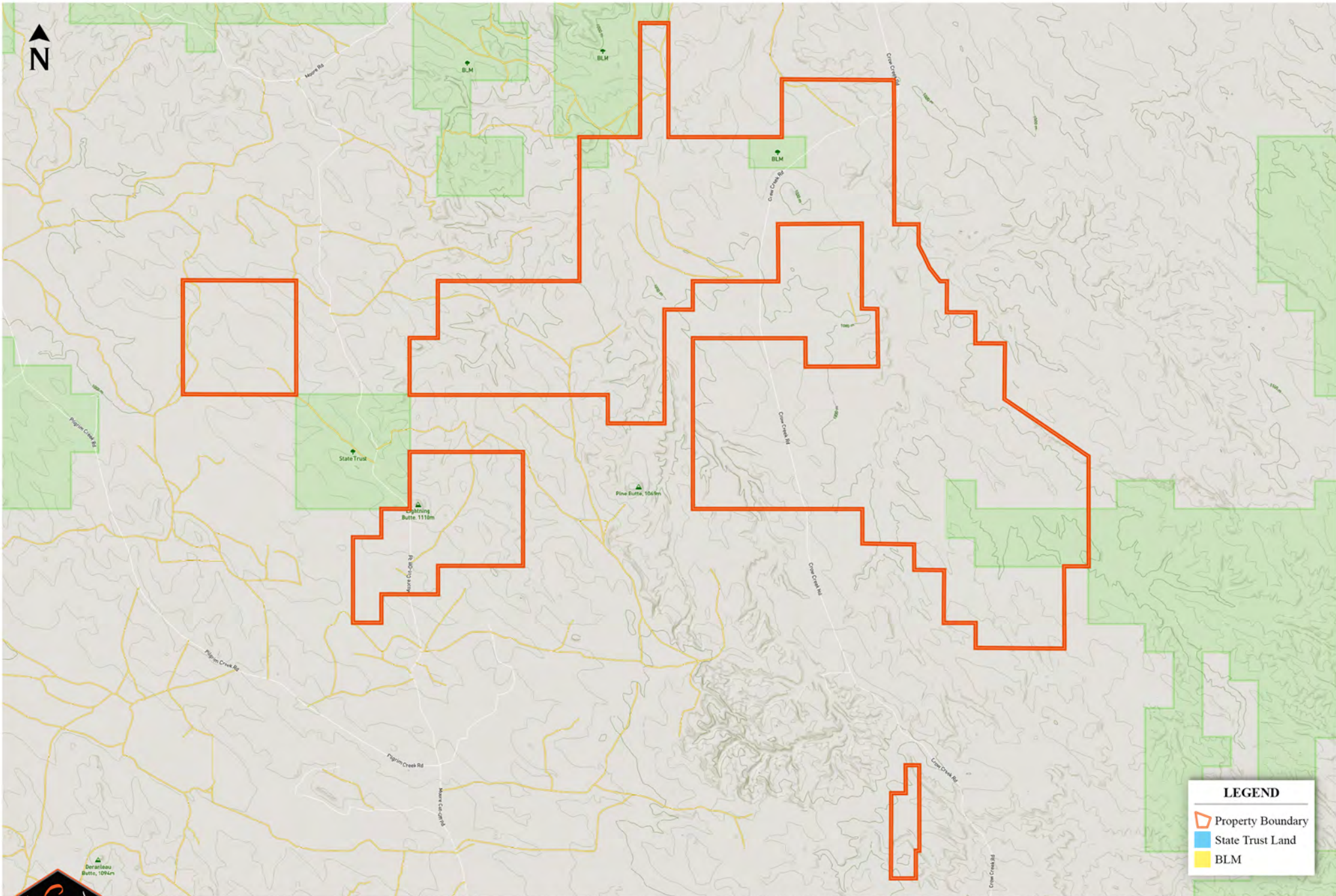
LEGEND	
	Property Boundary
	Cabin
	Fence
	Water Pipeline
	Spring
	Well
	Well (New + Control Box)
	Well (Solar + Trough)
	Well (Needs Pump)
	Well (Hand Dug)
	Hydrant
	Trough (Working)
	Trough (Usable)
	Windmill
	Windmill + Trough
	Windmill (Inactive)
	Windmill (Low Output)
	Shutoff (Curb Stop)
	Shutoff (Culvert)
	Reservoir
	Riparian Area
	State Trust Land
	BLM



PAINTED SKY RANCH
 Hammond, Montana | 9,893± Acres

www.SJSportingProperties.com

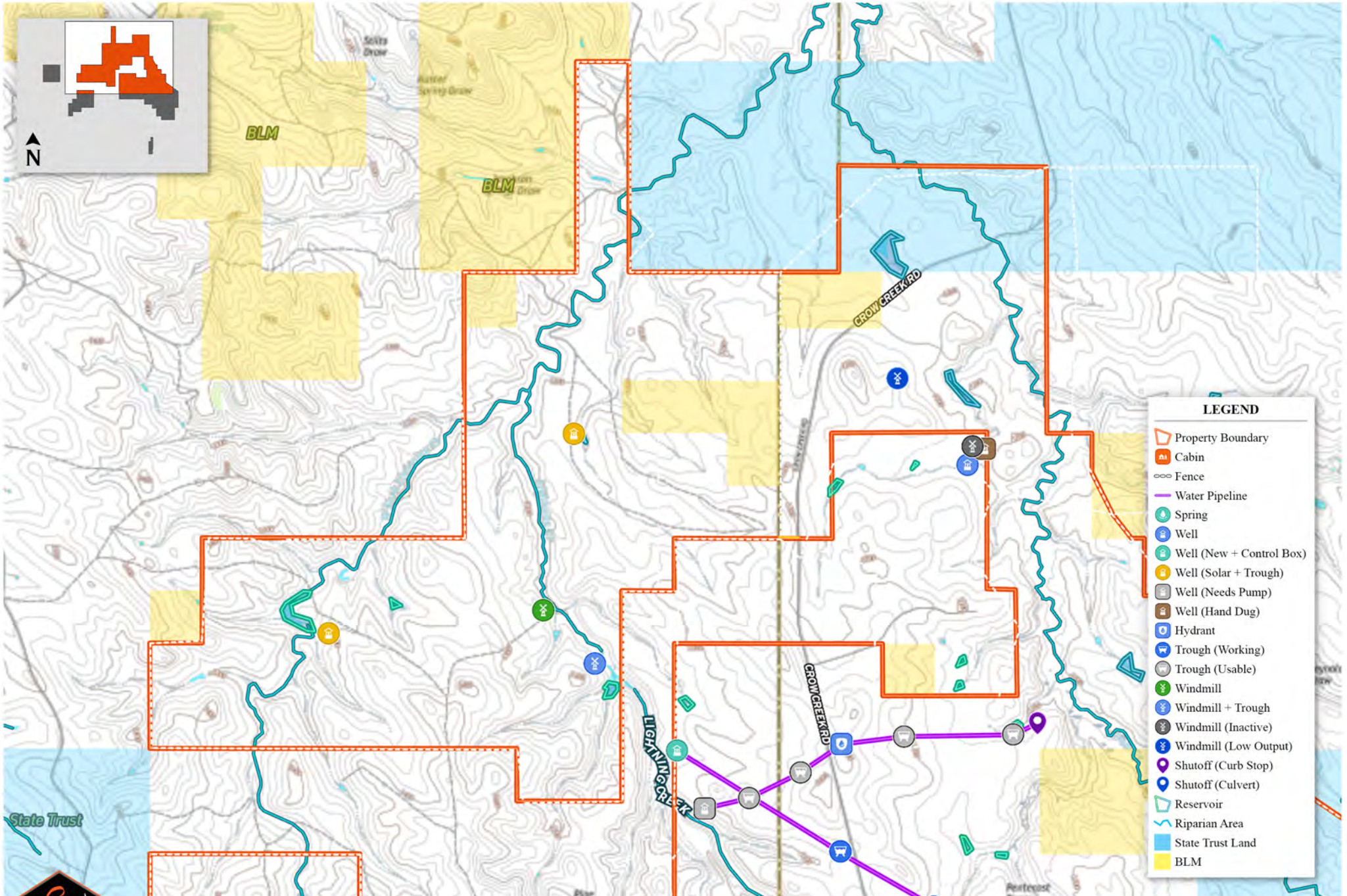
The information contained here is obtained by the broker from sellers, owners, or other resources. This information is considered reliable, neither this broker nor owners make any guarantee, warranty or representation as to correctness of any data or descriptions and the accuracy of such statements. The correctness and/or accuracy of any and all statements should be determined through independent investigation made by the prospective purchaser. This is not intended to replace a survey.



PAINTED SKY RANCH
Hammond, Montana | 9,893± Acres

www.SJSportingProperties.com

The information contained here is obtained by the broker from sellers, owners, or other resources. This information is considered reliable, neither this broker nor owners make any guarantee, warranty or representation as to correctness of any data or descriptions and the accuracy of such statements. The correctness and/or accuracy of any and all statements should be determined through independent investigation made by the prospective purchaser. This is not intended to replace a survey.



LEGEND

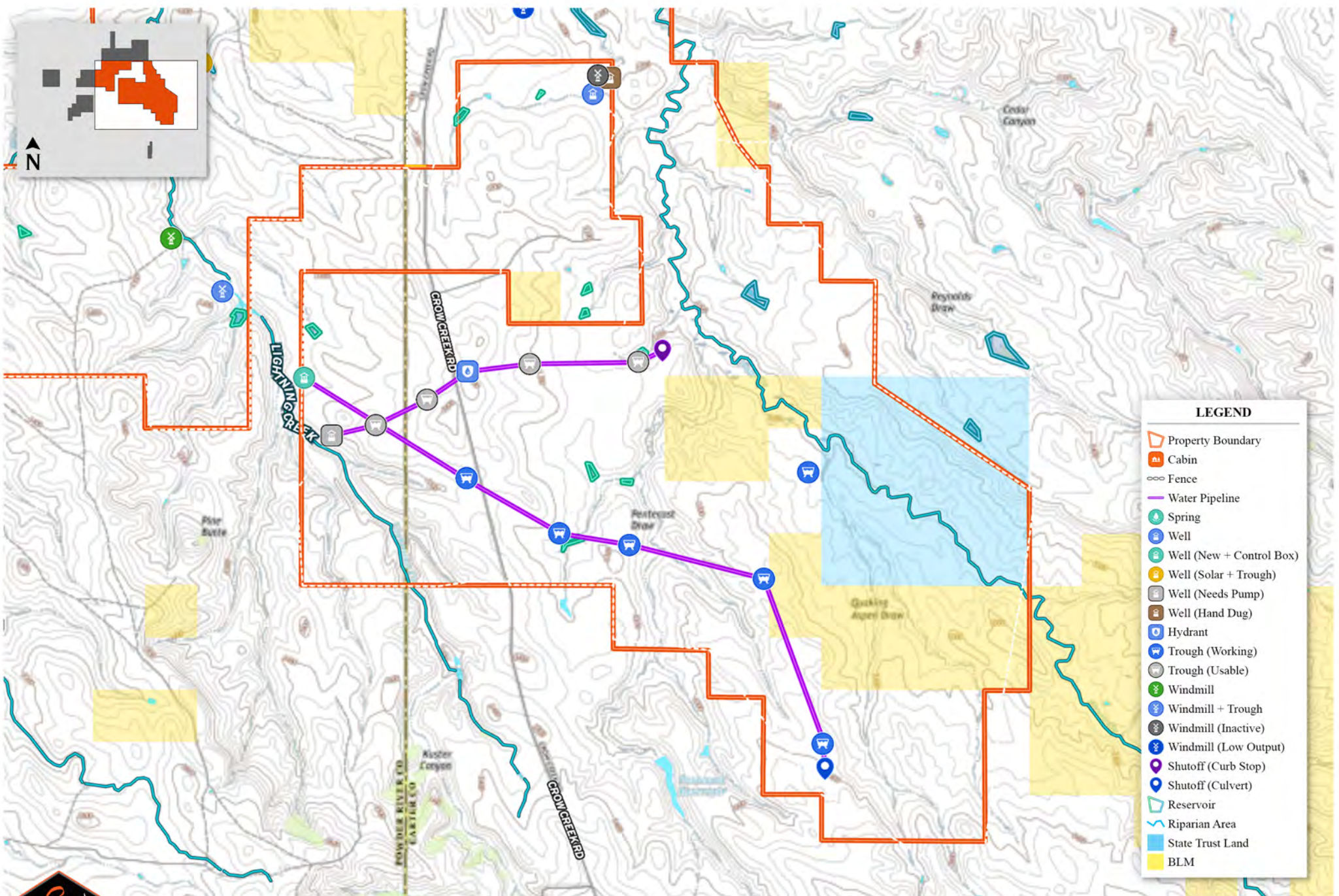
- Property Boundary
- Cabin
- Fence
- Water Pipeline
- Spring
- Well
- Well (New + Control Box)
- Well (Solar + Trough)
- Well (Needs Pump)
- Well (Hand Dug)
- Hydrant
- Trough (Working)
- Trough (Usable)
- Windmill
- Windmill + Trough
- Windmill (Inactive)
- Windmill (Low Output)
- Shutoff (Curb Stop)
- Shutoff (Culvert)
- Reservoir
- Riparian Area
- State Trust Land
- BLM



PAINTED SKY RANCH
 Hammond, Montana | 9,893± Acres

www.SJSportingProperties.com

The information contained here is obtained by the broker from sellers, owners, or other resources. This information is considered reliable, neither this broker nor owners make any guarantee, warranty or representation as to correctness of any data or descriptions and the accuracy of such statements. The correctness and/or accuracy of any and all statements should be determined through independent investigation made by the prospective purchaser. This is not intended to replace a survey.



LEGEND

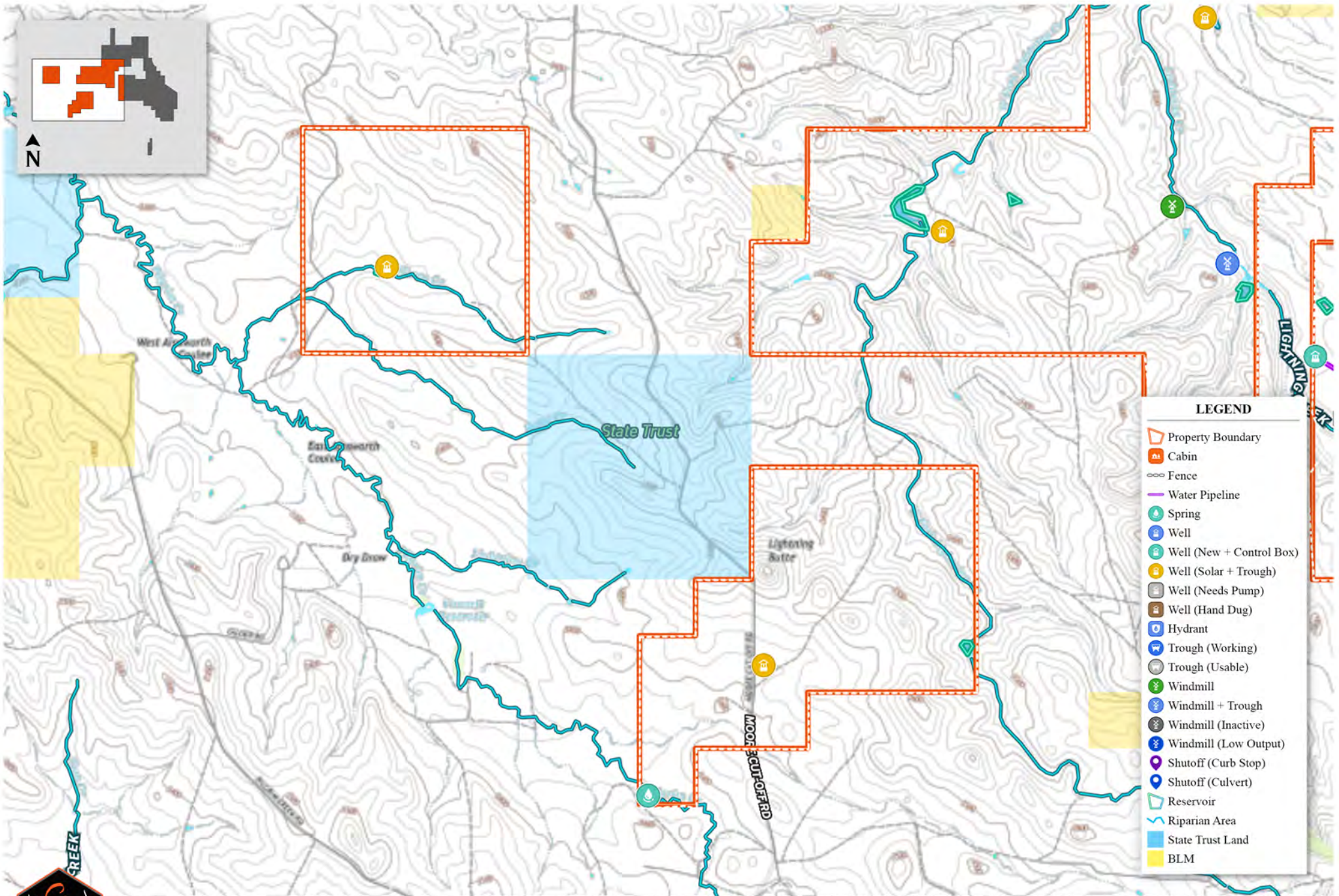
- Property Boundary
- Cabin
- Fence
- Water Pipeline
- Spring
- Well
- Well (New + Control Box)
- Well (Solar + Trough)
- Well (Needs Pump)
- Well (Hand Dug)
- Hydrant
- Trough (Working)
- Trough (Usable)
- Windmill
- Windmill + Trough
- Windmill (Inactive)
- Windmill (Low Output)
- Shutoff (Curb Stop)
- Shutoff (Culvert)
- Reservoir
- Riparian Area
- State Trust Land
- BLM



PAINTED SKY RANCH
 Hammond, Montana | 9,893± Acres

www.SJSportingProperties.com

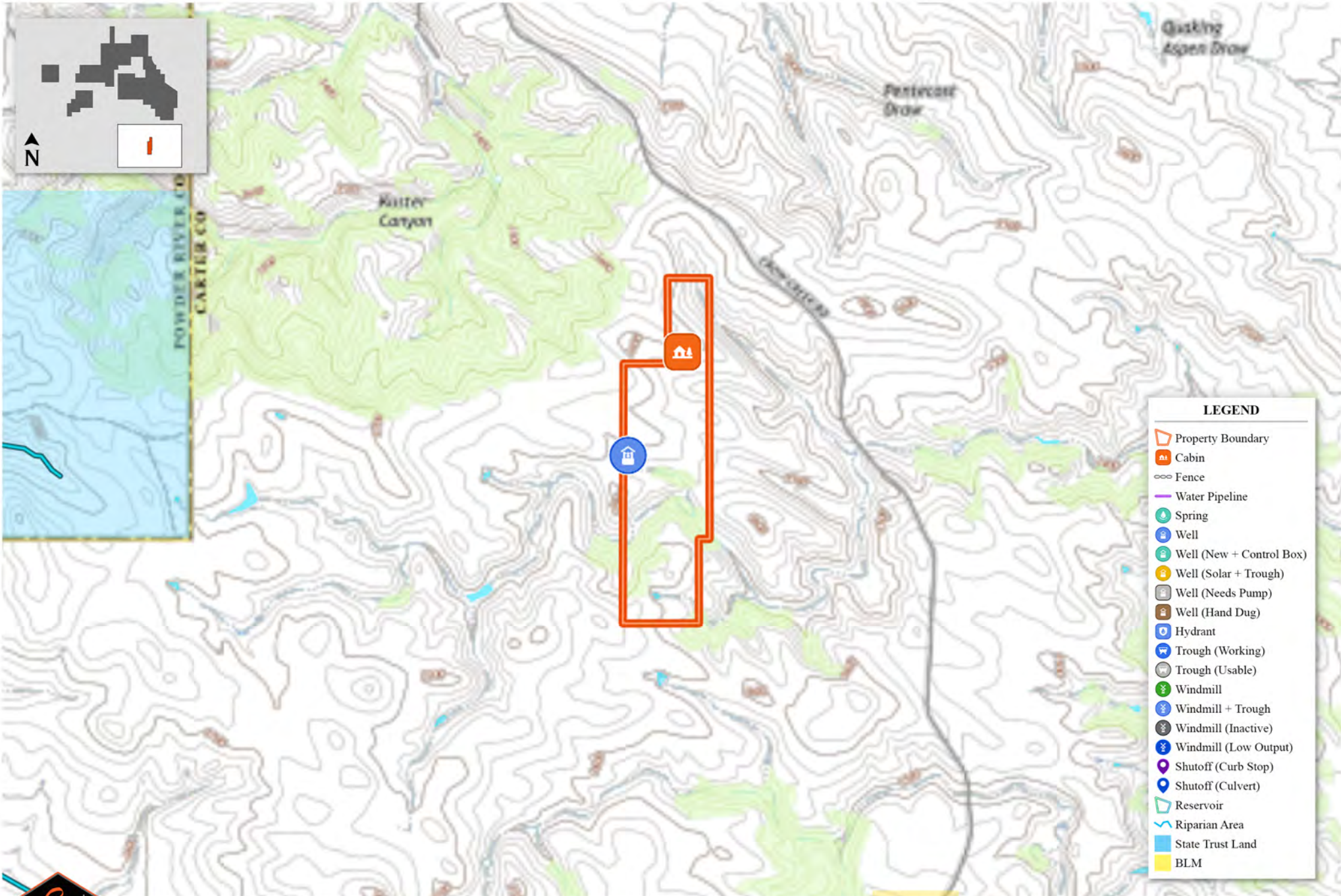
The information contained here is obtained by the broker from sellers, owners, or other resources. This information is considered reliable, neither this broker nor owners make any guarantee, warranty or representation as to correctness of any data or descriptions and the accuracy of such statements. The correctness and/or accuracy of any and all statements should be determined through independent investigation made by the prospective purchaser. This is not intended to replace a survey.



PAINTED SKY RANCH
Hammond, Montana | 9,893± Acres

www.SJSportingProperties.com

The information contained here is obtained by the broker from sellers, owners, or other resources. This information is considered reliable, neither this broker nor owners make any guarantee, warranty or representation as to correctness of any data or descriptions and the accuracy of such statements. The correctness and/or accuracy of any and all statements should be determined through independent investigation made by the prospective purchaser. This is not intended to replace a survey.



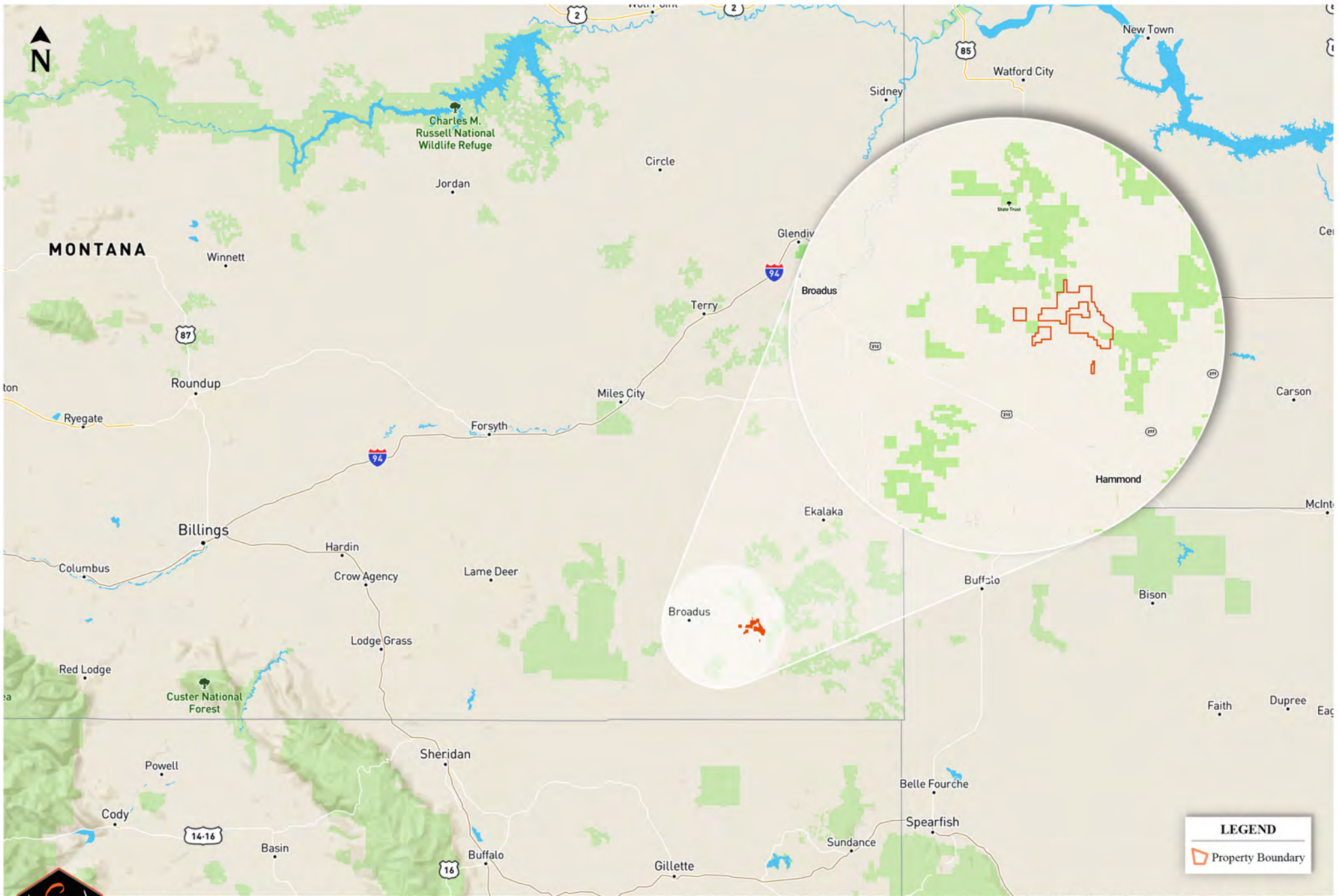
LEGEND	
	Property Boundary
	Cabin
	Fence
	Water Pipeline
	Spring
	Well
	Well (New + Control Box)
	Well (Solar + Trough)
	Well (Needs Pump)
	Well (Hand Dug)
	Hydrant
	Trough (Working)
	Trough (Usable)
	Windmill
	Windmill + Trough
	Windmill (Inactive)
	Windmill (Low Output)
	Shutoff (Curb Stop)
	Shutoff (Culvert)
	Reservoir
	Riparian Area
	State Trust Land
	BLM



PAINTED SKY RANCH
Hammond, Montana | 9,893± Acres

www.SJSportingProperties.com

The information contained here is obtained by the broker from sellers, owners, or other resources. This information is considered reliable, neither this broker nor owners make any guarantee, warranty or representation as to correctness of any data or descriptions and the accuracy of such statements. The correctness and/or accuracy of any and all statements should be determined through independent investigation made by the prospective purchaser. This is not intended to replace a survey.



PAINTED SKY RANCH
 Hammond, Montana | 9,893± Acres

www.SJSportingProperties.com

The information contained here is obtained by the broker from sellers, owners, or other resources. This information is considered reliable, neither this broker nor owners make any guarantee, warranty or representation as to correctness of any data or descriptions and the accuracy of such statements. The correctness and/or accuracy of any and all statements should be determined through independent investigation made by the prospective purchaser. This is not intended to replace a survey.