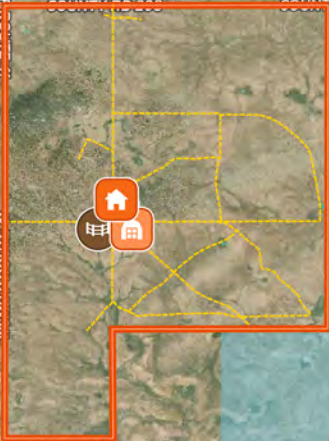




Gran Quivira Unit
Salinas Pueblo
Missions National
Monument



COUNTY RD 206

PIPELINE RD

WSMR P ROUTE 41

COUNTY RD 191

COUNTY RD 193

WSMR

COUNTY RD 208

COUNTY RD 208

COUNTY RD 208

Claunch

WADE RD

COUNTY RD 187

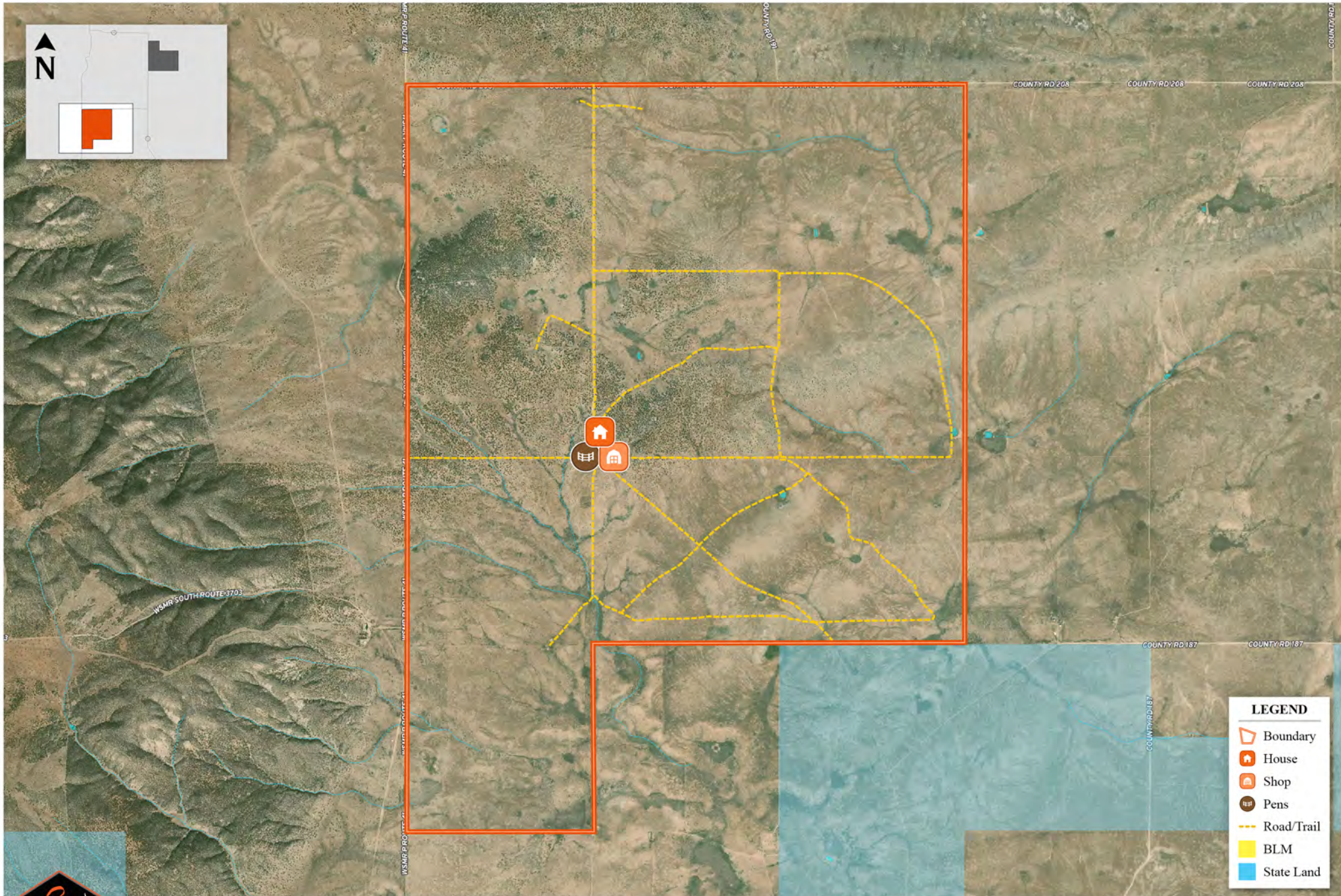
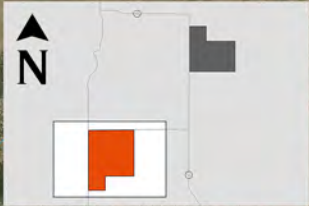
- LEGEND**
- Boundary
 - House
 - Shop
 - Pens
 - Road/Trail
 - BLM
 - State Land



EASON RANCH
Socorro County, New Mexico | 10,240± Acres

www.SJSportingProperties.com

The information contained here is obtained by the broker from sellers, owners, or other resources. This information is considered reliable, neither this broker nor owners make any guarantee, warranty or representation as to correctness of any data or descriptions and the accuracy of such statements. The correctness and/or accuracy of any and all statements should be determined through independent investigation made by the prospective purchaser. This is not intended to replace a survey.



LEGEND

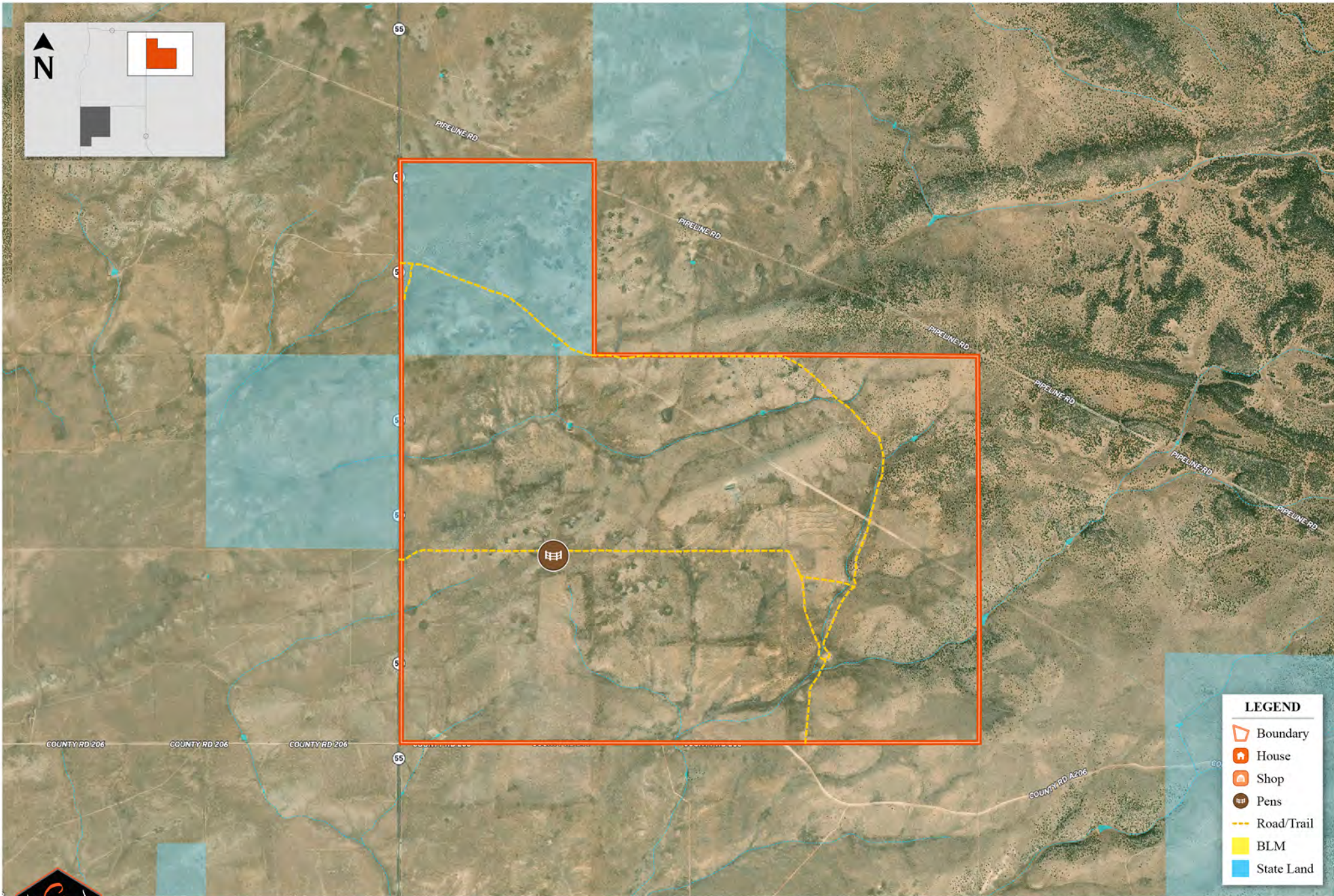
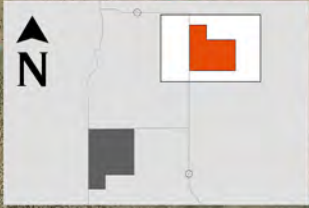
- Boundary
- House
- Shop
- Pens
- Road/Trail
- BLM
- State Land



EASON RANCH
Socorro County, New Mexico | 10,240± Acres

www.SJSportingProperties.com

The information contained here is obtained by the broker from sellers, owners, or other resources. This information is considered reliable, neither this broker nor owners make any guarantee, warranty or representation as to correctness of any data or descriptions and the accuracy of such statements. The correctness and/or accuracy of any and all statements should be determined through independent investigation made by the prospective purchaser. This is not intended to replace a survey.



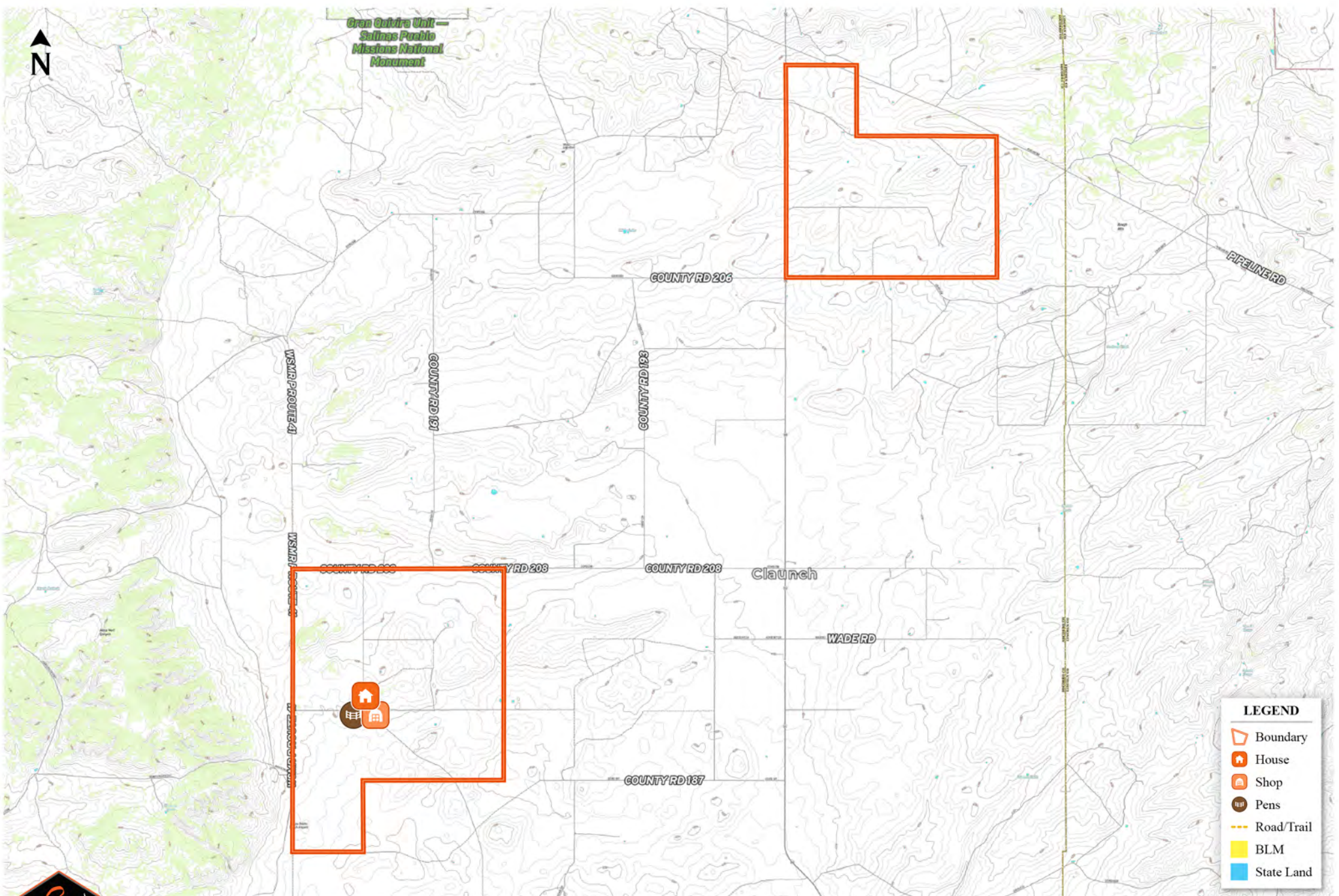
LEGEND	
	Boundary
	House
	Shop
	Pens
	Road/Trail
	BLM
	State Land



EASON RANCH
Socorro County, New Mexico | 10,240± Acres

www.SJSportingProperties.com

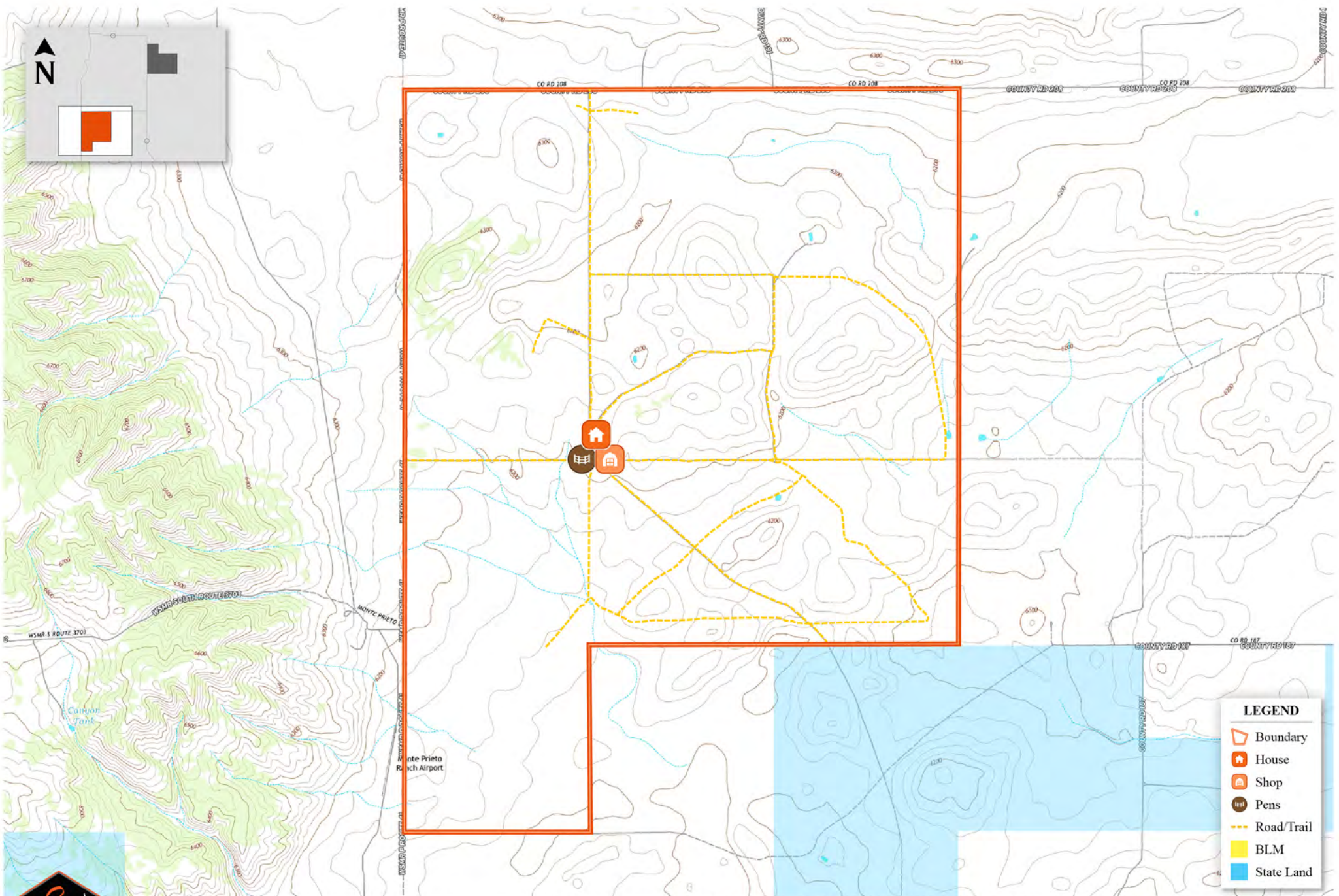
The information contained here is obtained by the broker from sellers, owners, or other resources. This information is considered reliable, neither this broker nor owners make any guarantee, warranty or representation as to correctness of any data or descriptions and the accuracy of such statements. The correctness and/or accuracy of any and all statements should be determined through independent investigation made by the prospective purchaser. This is not intended to replace a survey.



EASON RANCH
 Socorro County, New Mexico | 10,240± Acres

www.SJSportingProperties.com

The information contained here is obtained by the broker from sellers, owners, or other resources. This information is considered reliable, neither this broker nor owners make any guarantee, warranty or representation as to correctness of any data or descriptions and the accuracy of such statements. The correctness and/or accuracy of any and all statements should be determined through independent investigation made by the prospective purchaser. This is not intended to replace a survey.



LEGEND

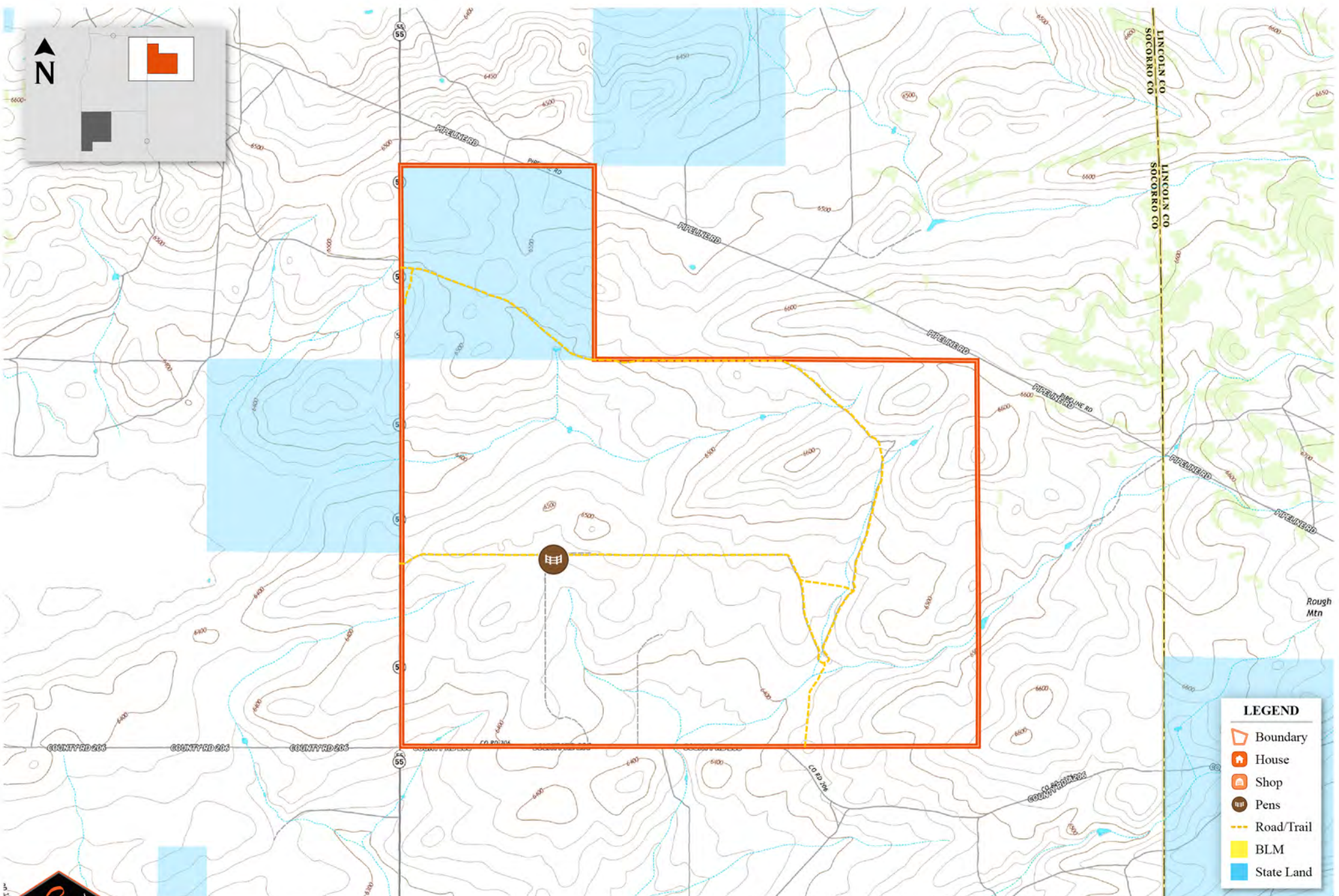
- Boundary
- House
- Shop
- Pens
- Road/Trail
- BLM
- State Land



EASON RANCH
 Socorro County, New Mexico | 10,240± Acres

www.SJSportingProperties.com

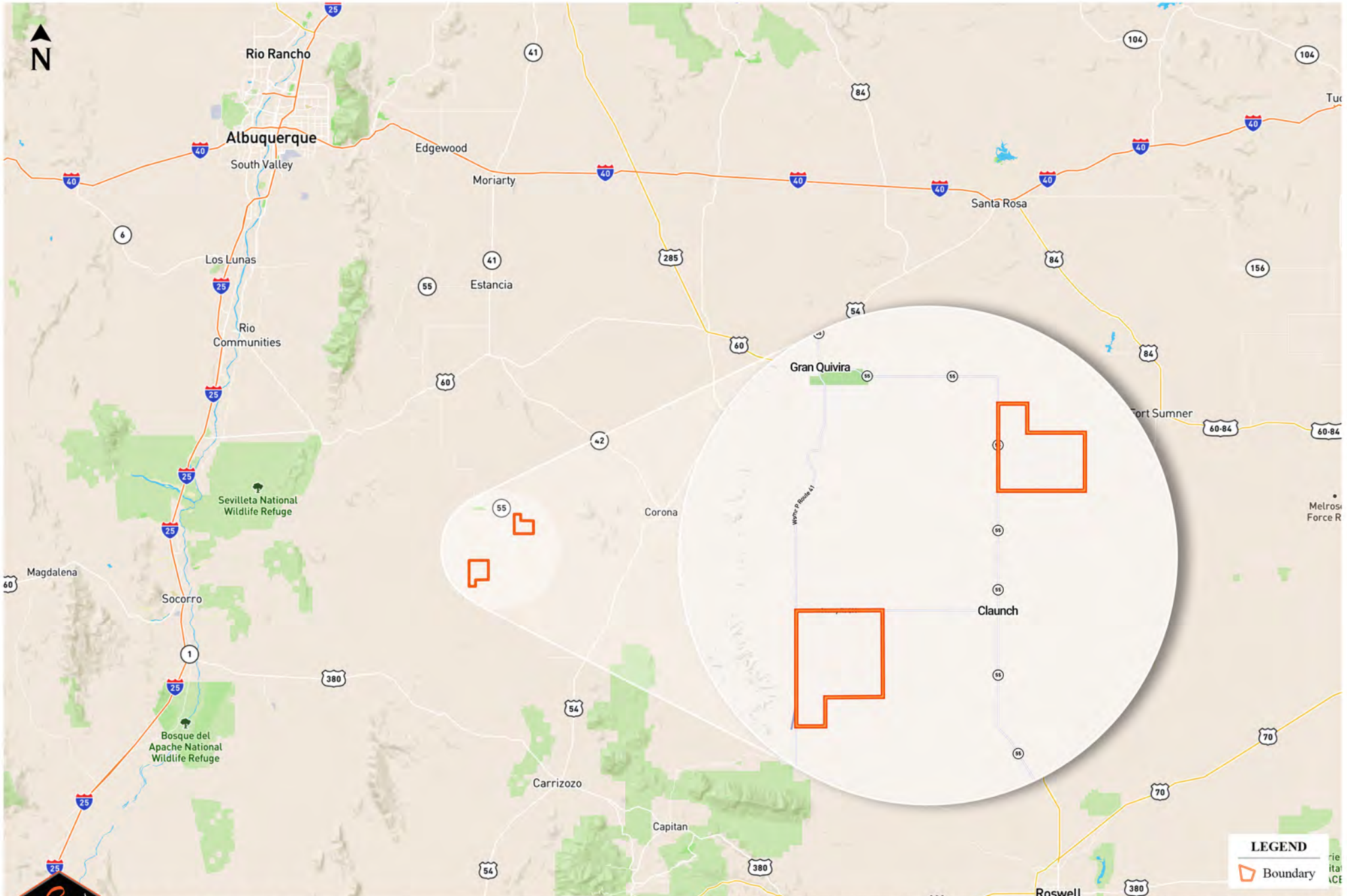
The information contained here is obtained by the broker from sellers, owners, or other resources. This information is considered reliable, neither this broker nor owners make any guarantee, warranty or representation as to correctness of any data or descriptions and the accuracy of such statements. The correctness and/or accuracy of any and all statements should be determined through independent investigation made by the prospective purchaser. This is not intended to replace a survey.



EASON RANCH
 Socorro County, New Mexico | 10,240± Acres

www.SJSportingProperties.com

The information contained here is obtained by the broker from sellers, owners, or other resources. This information is considered reliable, neither this broker nor owners make any guarantee, warranty or representation as to correctness of any data or descriptions and the accuracy of such statements. The correctness and/or accuracy of any and all statements should be determined through independent investigation made by the prospective purchaser. This is not intended to replace a survey.



EASON RANCH
 Socorro County, New Mexico | 10,240± Acres

www.SJSportingProperties.com

The information contained here is obtained by the broker from sellers, owners, or other resources. This information is considered reliable, neither this broker nor owners make any guarantee, warranty or representation as to correctness of any data or descriptions and the accuracy of such statements. The correctness and/or accuracy of any and all statements should be determined through independent investigation made by the prospective purchaser. This is not intended to replace a survey.