

PAINTED SKY RANCH

HAMMOND, MONTANA | \$8,900,000 | 9,893± ACRES

St. James

SPORTING PROPERTIES

WWW.SJSPORTINGPROPERTIES.COM

855-711-7577 | info@sjsportingproperties.com



PAINTED SKY RANCH

HAMMOND, MONTANA | \$8,900,000 | 9,893± ACRES

Painted Sky Ranch offers a rare opportunity to own a storied and highly functional piece of the Northern Plains. Encompassing approximately 9,893± total acres-including 8,167± deeded acres and 1,726± acres of State and BLM lease-the ranch is thoughtfully configured to support a sustainable livestock operation. The current ownership rates the ranch as ideally suited to run between 350 and 400 cow-calf pairs through the grazing months, supported by a landscape that promotes efficient use of native forage and seasonal conditions.

Rich in history, Painted Sky Ranch reflects the legacy of early settlement and use of the region. A historic schoolhouse perched atop one of the bluffs stands as a reminder of the families who once called this country home. Scattered throughout the ranch are World War I-era fence stays-artifacts from a time when barbed wire fencing played a critical role in the war effort. On the western reaches, remnants of early homesteads remain, where settlers farmed the land and built a livelihood-laying the foundation for the enduring ranching heritage. Near Lightning Butte, the landscape tells a much older story, with teepee rings and scattered lithic fragments from arrowhead crafting still visible, offering a glimpse into the area's deep Native American heritage.

The western portion of the ranch is characterized by productive, improved grasslands that have historically supported hay production during wetter cycles. In more recent years, these pastures have been utilized primarily for grazing, while still maintaining eligibility under FSA programs during drier conditions. This added flexibility enhances both the operational efficiency and long-term value of the property.

Across the ranch, a diverse mix of cool- and warm-season native grasses provides dependable, year-round forage for livestock while also creating exceptional wildlife habitat. The property supports strong populations of mule deer, whitetail deer, and antelope, with this region long recognized for its historically significant mule deer genetics. With thoughtful management, Painted Sky Ranch offers the potential to develop a truly outstanding, trophy-caliber hunting property alongside a productive cattle operation. Combining natural productivity, wildlife richness, and deep historical roots, Painted Sky Ranch is well positioned to carry its legacy forward under new ownership.



PAINTED SKY RANCH | ST. JAMES SPORTING PROPERTIES





OVERVIEW

- 9,893± Total Acres
- 8167± Deeded Acres
- 840± Leased Acres - State
- 886± Lease Acres - BLM
- Estimated 350-400 cow-calf pairs
- Minimal to moderate supplemental feed required during winter months
- Modern water system (5.5± miles of piping) with high production wells
- Concrete stock tanks
- Multiple reservoirs and creeks
- Interior ranch roads
- Fenced and cross fenced
- Ranch cabin (1 bed / 1 bath)
- Hunting for Mule deer, Whitetail deer, antelope, turkey, and upland birds

HUNTING

The southeast corner of Montana is renowned for its exceptional hunting opportunities, offering a mix of rugged breaks, rolling prairies, timbered draws, and river bottoms that create prime habitat for a wide variety of game species. This area is particularly famous for its trophy mule deer and whitetail deer hunting, with large bucks commonly harvested each year. While deer populations on the ranch today are below historic levels, the property's habitat and natural resources offer tremendous potential to restore a thriving herd—creating an opportunity for future owners to manage and cultivate trophy-quality mule deer and whitetail. Antelope are abundant across the open plains, providing excellent spot-and-stalk hunting opportunities.

- Deer & Elk Unit 705 (tags are also valid in Units 702 & 704)
- Three different big game hunting license options, including: Archery Only Permit, Rifle Permit, and Heritage Muzzleloader

Non-resident Draw Odds with 7 preference points

- Permit - Elk - Archery = 53%
- Permit - Elk - Rifle = 10%
- Antelope - Rifle = 67%
- Mule Deer - Rifle - Opts = 52%

The ranch and surrounding area have good upland bird hunting, especially for species like sharp-tailed grouse, sage grouse, and Hungarian partridge. Turkey hunting can be exceptional, and large Toms are regularly harvested around the ranch's cabin. The numerous year-round ponds provide the opportunity to hunt migrating waterfowl in the fall. The option of predator hunting and prairie dog hunting can also add enjoyment and potential income for the future landowner.

FISHING

Fishing in southeastern Montana offers a quiet, rewarding experience with access to prairie reservoirs, stock ponds, and seasonal creeks that support species like walleye, perch, northern pike, bass, and crappie. While not as famous as western trout waters, this region provides excellent warmwater fishing with little pressure, ideal for both serious anglers and families. Tongue River Reservoir is a notable nearby destination for multi-species angling, making this corner of the state a hidden gem for year-round fishing.







PAINTED SKY RANCH | ST. JAMES SPORTING PROPERTIES



IMPROVEMENTS & FENCING

Painted Sky Ranch is a very functional and accessible ranch with good interior ranch roads and gentle topography. The ranch's perimeter fencing and cross-fencing is in good condition, although some of the southeastern boundary fencing could use improvement in the near future.

There is a newer, one-bedroom ranch cabin with a full kitchen, bathroom, and loft. In addition, the owners are including a storage container, a reefer trailer, and an RV, which are all located next to the cabin.

- Perimeter & Cross (Pasture) Fencing throughout the ranch
- Ranch cabin with electricity, water, and septic
- Well maintained county road to paved highway
- Extensive interior two-track ranch roads



WATER RESOURCES

Painted Sky Ranch's water infrastructure is well-planned and diversified. Highlighted by a modern water system established in 2014, there are approximately 5.5± miles of pipeline that accompanies the high-production well. Along the pipeline are numerous concrete stock tanks that span through the various pastures, Four of which have functional solar panels attached. The pipeline also has multiple Airvacs and curbstops to help ensure a functional and easily maintained delivery system. Some older wells and pipelines potentially could be brought back into functional use should the future owner so choose.

Perhaps just as impressive as the pipeline water system are the numerous naturally occurring creeks that flow through the ranch, including; Crow Creek, Lightning Creek, and the West Fork of Lightning Creek. These creeks stretch the length of the ranch (North to South) which also feed over a dozen year-round and seasonal reservoirs. Not only do these provide a water supply for stock, but they also offer fishing, waterfowl hunting, and recreational opportunities.

- 5.5± mile long modern water pipeline with Airvacs and curbstops that delivers water to 6 concrete tanks.
- An additional 1.5± mile water pipeline that delivers water to 3 fiberglass tanks
- In addition, there are 4 Solar Wells in the pastures not serviced by the pipelines
- Multiple creeks and reservoirs are located throughout the ranch









LOCATION

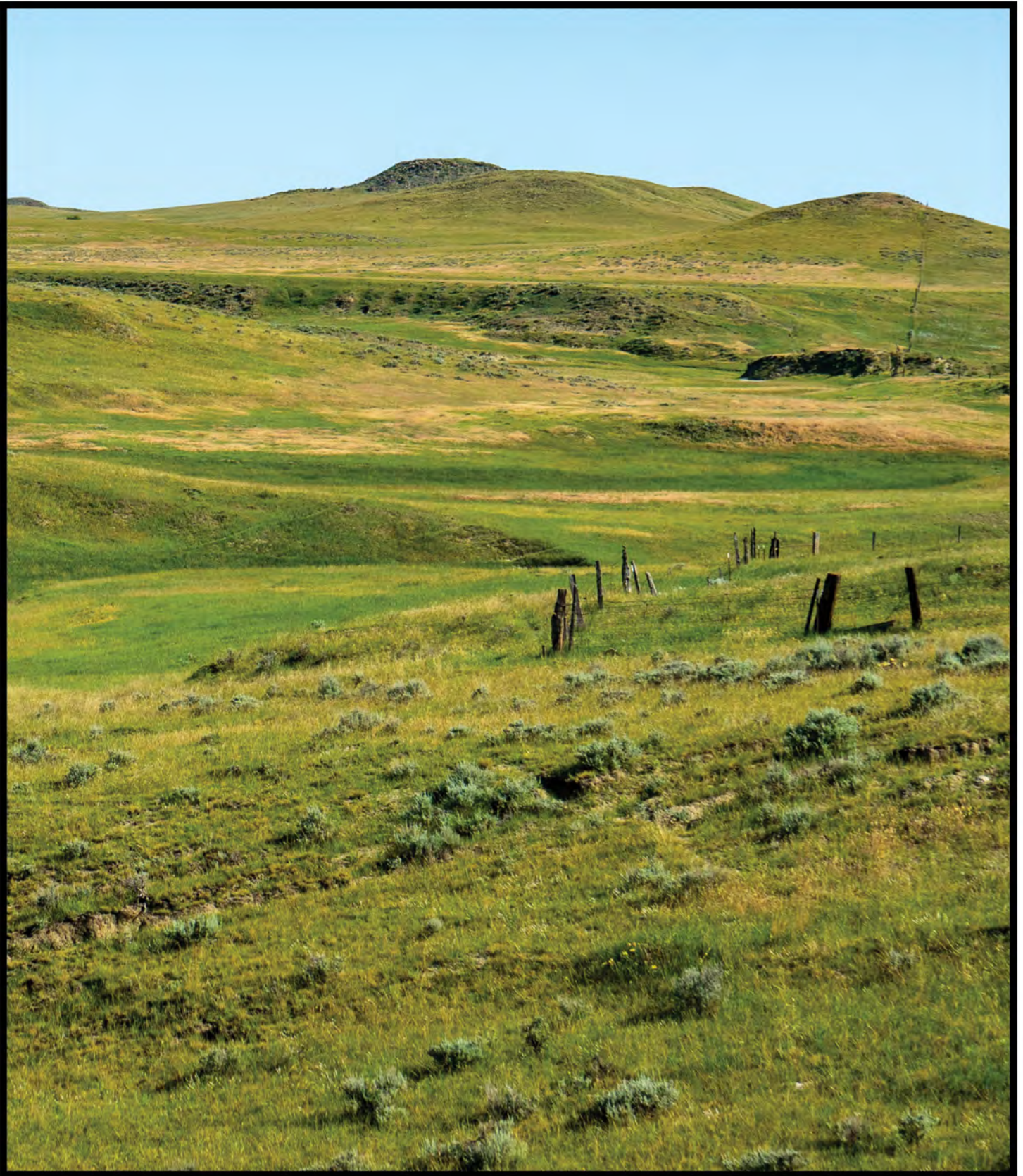
This ranch is located in Powder River County and Carter County in the far Southeastern corner of Montana. This area is known for its vast, open rangelands, which support cattle ranching as a primary industry. The area features a semi-arid climate with rolling plains, badlands, and river valleys, creating diverse grazing habitats.

Broadus, Montana, known as "The Wavingest Town in the West," is a small but welcoming community located 40 miles from the ranch. Broadus offers essential amenities such as lodging, local dining, a veterinary clinic, emergency medical services, and public schools, along with cultural attractions like the Powder River Historical Museum.

Belle Fourche and Spearfish, South Dakota, serve as a larger regional hub with a full range of services, including healthcare facilities, public safety departments, extensive parks and recreational facilities, a golf course, and the Belle Fourche Rec Center. It also offers public schools, a library, and access to nearby outdoor recreation at Rocky Point Recreation Area, making it an important resource center for ranchers and residents in the region.

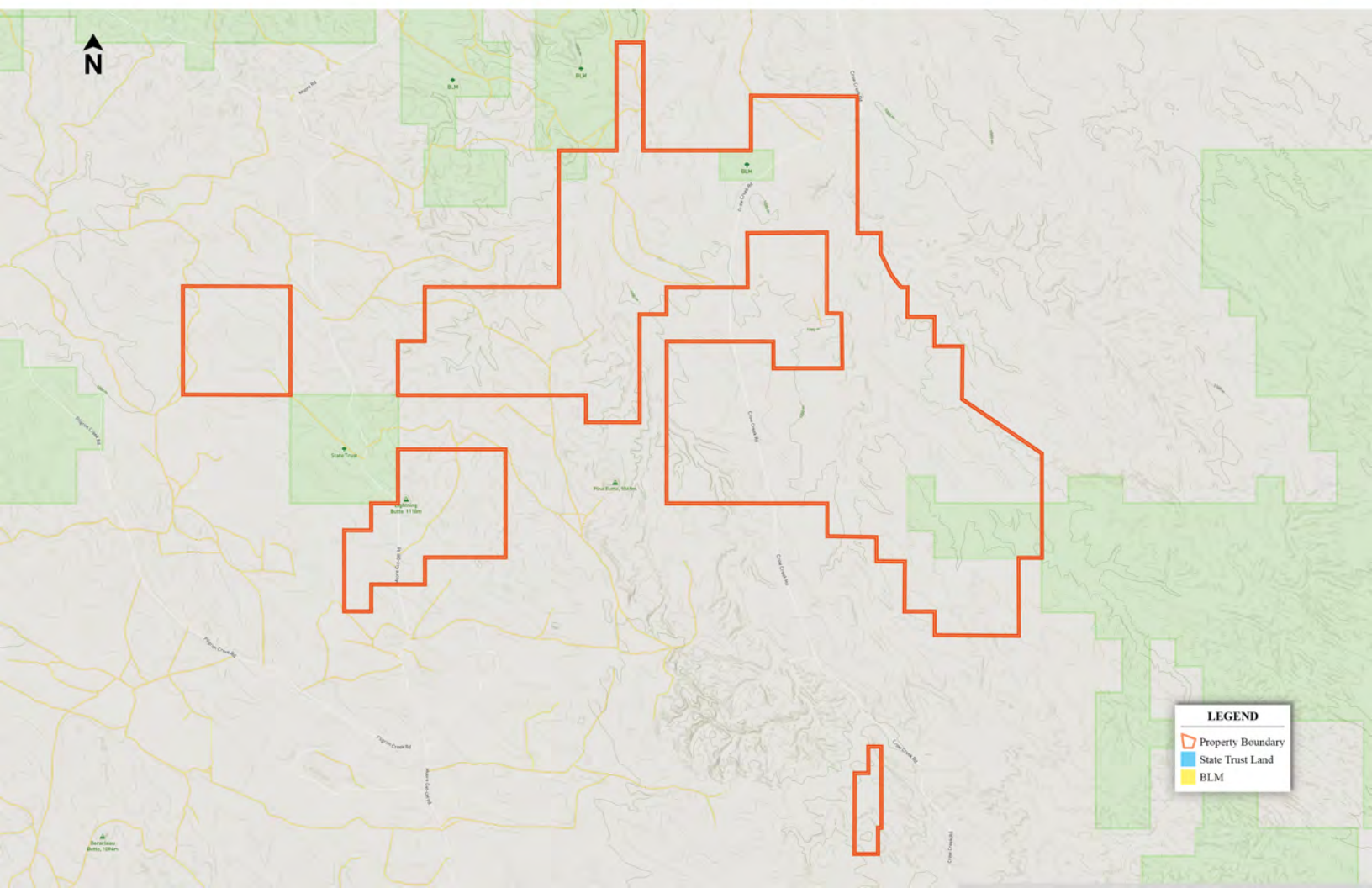
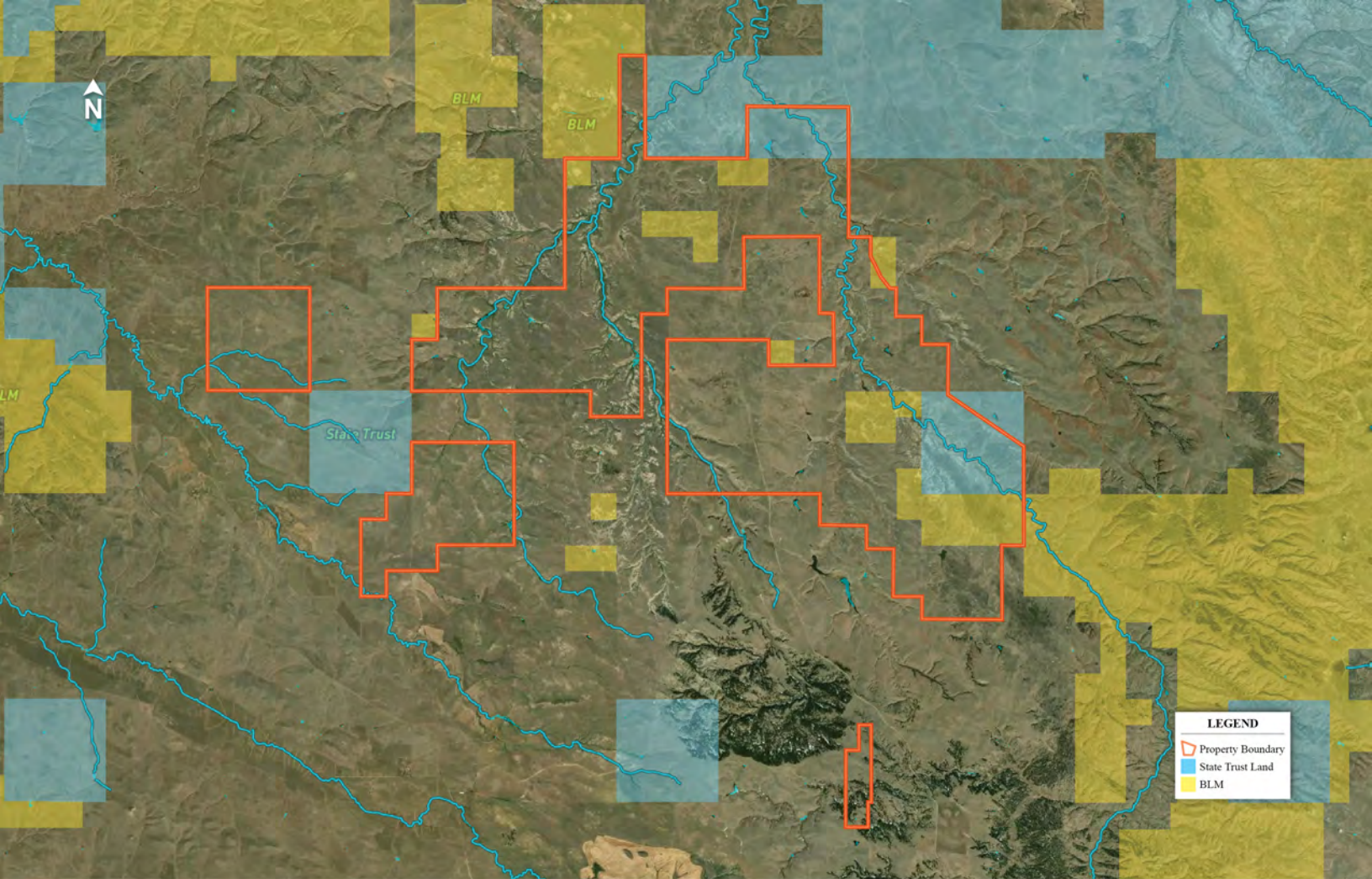
If you need basic groceries, fuel, and home-cooked meals, look no further than B & J's Convenience Store and RV Park in Alzada. This friendly convenience store is an easy 40mi drive from Painted Sky Ranch.

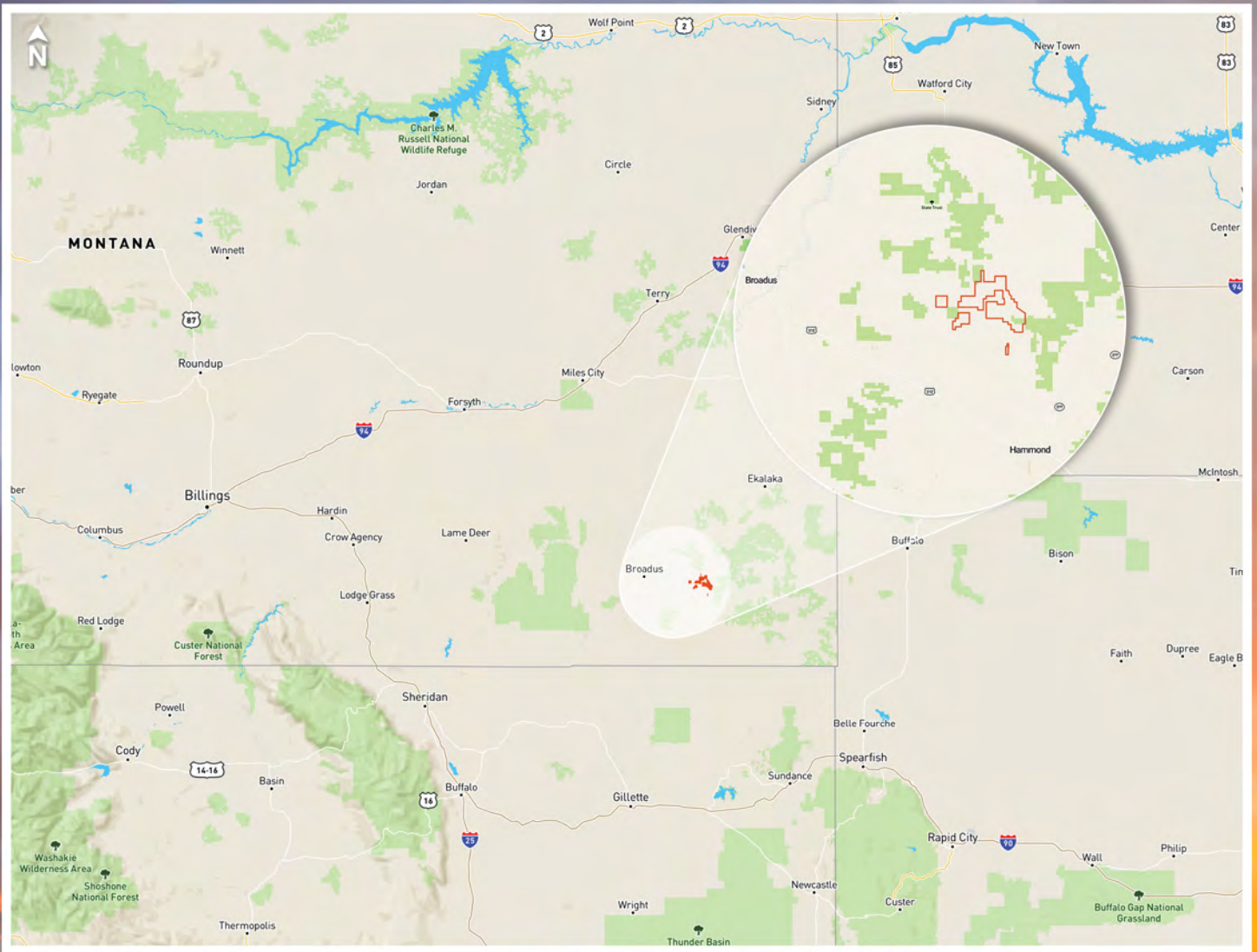
- Alzada, MT - 41 miles
- Belle Fourche, SD - 78 miles
- Gillette, WY - 125 miles
- Broadus, MT - 41 miles
- Miles City, MT - 120 miles
- Billings, MT - 209 miles



SUMMARY

Painted Sky Ranch represents a rare and unique opportunity to steward a true piece of Montana's ranching legacy. Encompassing ±9,893 total acres, with deep generational roots dating back to 1945, this ranch is a testament to the enduring spirit of the American West. Carefully managed for sustainable cattle operations and rich in history, Painted Sky Ranch offers more than productive grasslands and excellent water infrastructure-it offers the next generation of owners to write their own chapter of Montana's ranching story.





St. James

SPORTING PROPERTIES

855-711-7577 | INFO@SJSportingProperties.com | PO BOX 700 WINDSOR, COLORADO 80550 | LICENSED IN: CO, ID, KS, MT, NE, NM, UT, & WY

WWW.SJSportingProperties.com

The information provided here is gathered by the broker from sellers, owners, or various sources. While deemed reliable, neither the broker nor the owners offer any guarantee, warranty, or representation regarding the accuracy of the data or descriptions. Prospective purchasers are encouraged to independently investigate and verify the correctness and accuracy of all statements. If your property is currently listed with another brokerage, please disregard this marketing material.