

# Frenchman Road Acres

Saco, MT

\$45,000

## Property Information

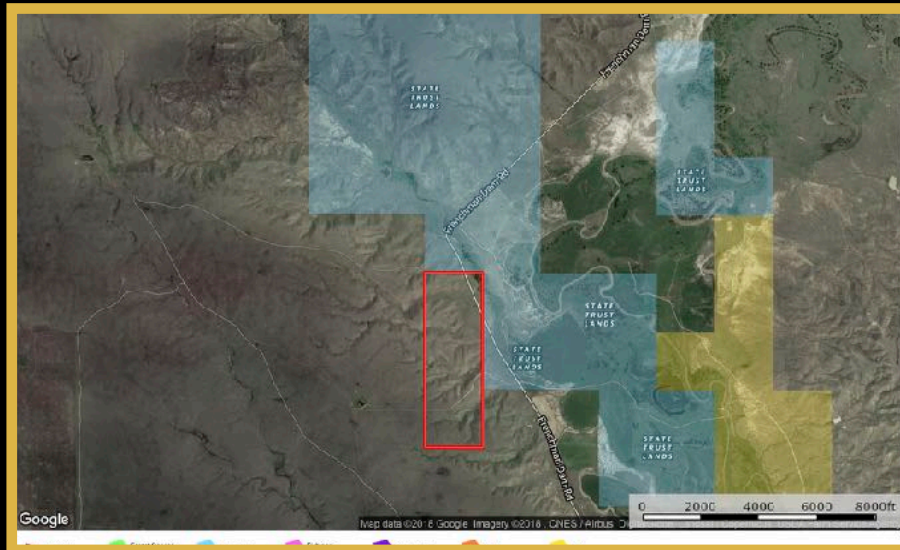
**Acres:** 120

**Taxes:** TBD

**Legal:** S21, T33 N, R34 E, SW4NE4, W2SE4

## Executive Summary

Here is a rare chance to get your hands on 120 acres of grassland in North Central Montana. This property is prime hunting ground offering deer, antelope, pheasants and grouse. It also borders over 1,500 acres of State and BLM Land on two sides allowing for additional recreational opportunities. Property is situated along an east facing ridge with a great view of Frenchman Creek Valley to the east and is located a few miles north of the famous Milk River Valley traveled by Lewis and Clark in the early 1800's. Coulees on the property provide shelter for deer in the winter. The property has access along Frenchman Dam Road at two locations.



Presented Exclusively by  
**Nicklaus Schmele, REALTOR®**

406-622-3224 office  
406-499-1663 cell  
Nicklaus@CorderLand.com



# CORDER

AND ASSOCIATES, LLC

The information is provided by outside sources and deemed reliable but not guaranteed by the brokerage firm, its agents or representatives. Buyers and their agents are encouraged to conduct due diligence, and verify to their satisfaction, the information contained herein regarding property.

EXCLUSIVE PARTNER OF

**LAND LEADER**  
FARM, RANCH & RECREATIONAL REAL ESTATE