

CORDER

AND ASSOCIATES, LLC



Luxe Red Lodge Log Home

37 Fox Road, Red Lodge, MT 59068

Offered at \$1,499,000



Presented Exclusively by
Pam Amundsen, REALTOR®

406-622-3224 office
406-208-0630 cell
Pam@CorderLand.com

EXCLUSIVE PARTNER OF
LANDLEADER



Property Information

Lot Size: 20 acres

Taxes: \$3,800.00 (2021)

Legal: REMINGTON RANCH, S28, T07, R20 E,
REMINGTON RANCH TR 1 AM COS 1620 6TH AM

Year Built: 1999

Square feet: 3,161

Bed/Bath: 5 bed/3 bath

HVAC: Radiant in floor heat for the main floor;
Upstairs has natural gas baseboard heat system

Water/Sewer: Well

Personal Property and Appliances Included: All
appliances; Window coverings

Special Enhancements/Extras: New carpet and
engineered hardwood flooring upstairs; Woodstove;
Fencing; Updated paint in all bedrooms

Garage: Oversized 2 car; 12' x 20' room on back of
garage

Outbuildings: 2 sheds

Elevation: 5,800

Hunting District: 520



The information is provided by outside sources and deemed reliable but not guaranteed by the brokerage firm, its agents or representatives. Buyers and their agents are encouraged to conduct due diligence, and verify to their satisfaction, the information contained herein regarding property.

Executive Summary

Get cozy in this custom log home in Red Lodge, Montana! Large, hand-peeled logs create this luxurious 5-bedroom, 3-bathroom log cabin. The custom craftsmanship is evident with beauty in the details. With no HOAs or covenants, utilize the 20 acres of manicured and landscaped land as you see fit. Hardy trees, shrubs, and perennial flowers enhance the rural setting that opens to stunning views of snow-capped mountains. Enjoy the tranquility of the wildlife that relishes the natural sanctuary. The home features many updates and high-end finishes including new paint and flooring in all the bedrooms, a remodeled upstairs bathroom, a new pressure tank for the boiler, and new fencing along the southern border of the property. Gaze out the spectacular windows in the living room that mimic the peaks of the mountaintops while sipping a hot cup of coffee listening to the crackle of the wood burning in the stove. Store your vehicles and toys in the oversized two-car garage that also has a bonus 12' x 20' room off the back. Red Lodge, Montana has all the amenities to accommodate outdoor recreating or fine dining! Experience Montana from this custom log home on 20 acres!



The information is provided by outside sources and deemed reliable but not guaranteed by the brokerage firm, its agents or representatives. Buyers and their agents are encouraged to conduct due diligence, and verify to their satisfaction, the information contained herein regarding property.

Local Area

Nicknamed the “Basecamp to the Beartooth’s,” Red Lodge, Montana is the county seat to Carbon County. This friendly and hospitable community prides itself on service to others with over 50 non-profit organizations to date. The town sees its fair share of tourism activity because of its proximity to the popular and highly pursued Yellowstone National Park. However, it maintains a year-round economy due to the lucrative hospital and school systems. Surrounded by Custer Gallatin National Forest and shadowed by the brawny Beartooth Mountains, Red Lodge possesses beauty and numerous ways to spend your free time. Outdoor recreating can be found at Red Lodge Ski Resort in the winter months. Rock Creek lets adventurers fish and paddle its waters. Virtually, Red Lodge is a 60-mile drive to anywhere! To the north and 60 miles, Billings provides access to an airport and big-city amenities. To the south and 60 miles, Cody, Wyoming represents as a rodeo town, and 60 miles to the southwest is Yellowstone National Park. Up for a scenic drive? Check out the famous Beartooth Highway for impressive and breathtaking views! Enjoy the Yellowstone Wildlife Sanctuary where you’re guaranteed a glimpse at rare and extraordinary animals. Any direction you look, Red Lodge is full of elegance, charm, and world-class experiences genuine to Montana’s landscape and warm welcoming hospitality.

Area Attractions



Beartooth Highway

The famous Beartooth Highway has 68 miles of winding roads waiting to be navigated. This unique highway climbs to the highest elevation in both Montana and Wyoming! It's considered an All-American Road that holds a designation as one of the most beautiful in America. With switchbacks and glorious scenery, travelers can gape at wildlife and the snow-capped Northern Rocky Mountains. The highway tops out at the nearly 11,000-foot Beartooth Pass. The highway is traditionally open from Memorial Day through Columbus Day.

The Yellowstone River and Premiere Blue-Ribbon Fishing

This constant, unwavering river flows throughout the Yellowstone River corridor just as it has for centuries: in its natural state. It has not been dammed nor tamed and is the longest, free-flowing river as such in the lower 48 states. It meanders through a variety of scenery and various topographies from steep canyon walls to lazily flowing through farm country. Its fresh, clean waters provide fishing, floating, swimming, and rafting. The nutrient-rich areas surrounding the river are a paradise for wildlife making hunting especially good as well. Enjoy viewing wildlife such as bald eagles, elk, white-tailed deer, and black and grizzly bears. Certainly, you will want to take advantage of the world-class fishing known internationally as the best. These premier trout waters produce an abundance of big trout and the native Yellowstone cutthroat trout. In the upper half of the river, species found are cutthroat trout, rainbow trout, large whitefish, and brown trout. In the lower half or warmer waters, species found are large walleye, catfish, and sturgeon. The beauty of fishing the Yellowstone River is its length and ample space. Anglers are not crowded with others and have the length of the river to spread out. The beautiful landscape encompassing the banks enhances the whole experience. Dry fly fishing is excellent as well as sub-surface fishing with nymphs and streamers.



Yellowstone National Park

Yellowstone National Park is a mere 90 minutes away where you can catch a glimpse of the rarely seen grizzly and wolf at the Grizzly and Wolf Discovery Center. Visit geysers and the historic Old Faithful for sights that you will never forget. Get a taste of the wild, see where the wildlife roams, and enjoy all the amenities of a national park!



Red Lodge Mountain

One of Montana's best ski resorts, Red Lodge Mountain has short lift lines and reasonably priced lift tickets making it more appealing than others in the state. The mountain offers over 1,600 acres frequently dusted with fresh, untouched powder. Take some lessons, grab rentals, or dine at the main lodge's cafeteria. There is something for everyone at this winter wonderland.



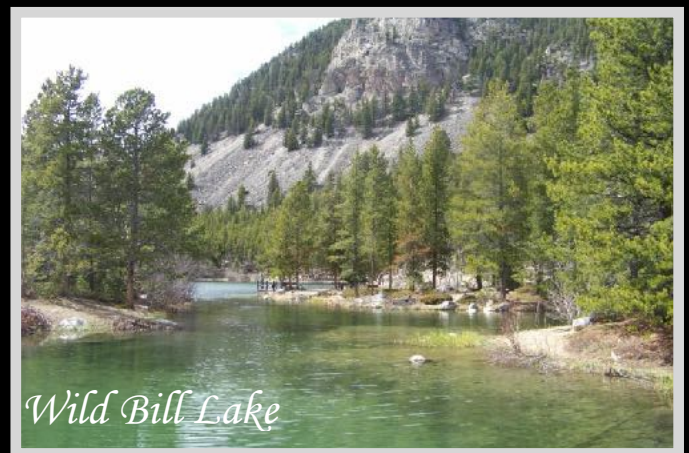
Yellowstone Wildlife Sanctuary

What happens to the wildlife that is too badly injured to return to the wild or habituated to humans? The mission of the sanctuary is to provide a place for those that can no longer be released back into the wild and have nowhere else to go. Here, they can live out their days with rest and peace. The sanctuary also invites groups and tours for conservational education and to display an example of eco-friendly design and operation. The wildlife sanctuary houses many different animals including bison, black bear, bobcat, lynx, coyote, owls, hawks, gray wolf, and more.



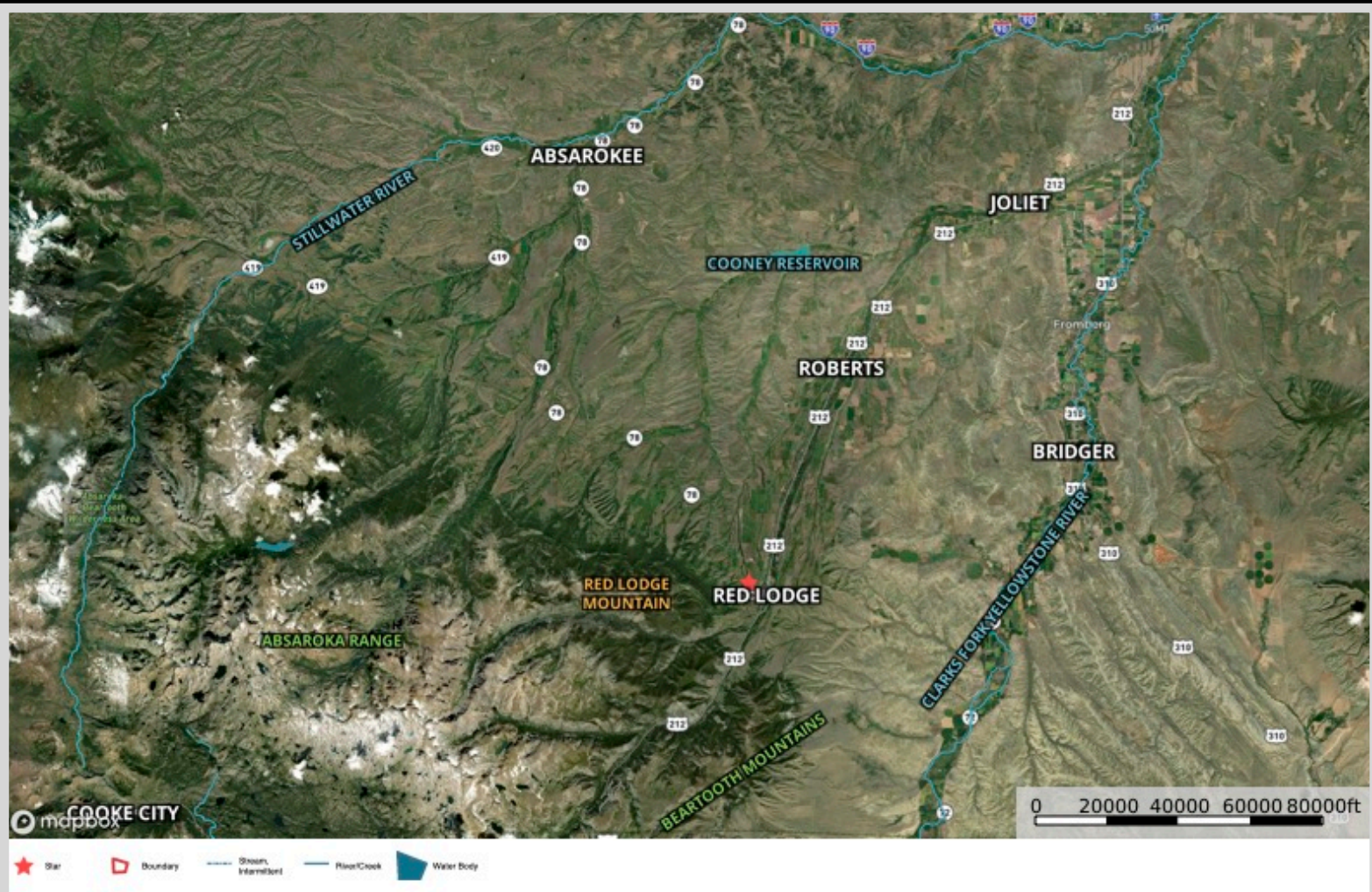
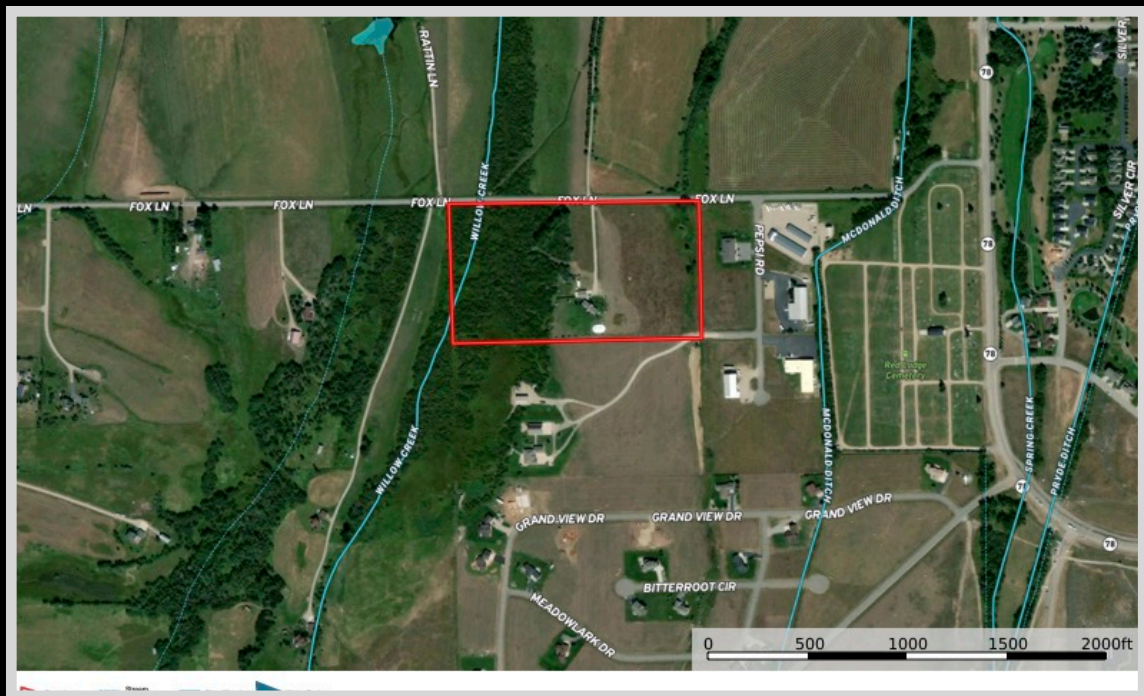
Wild Bill Lake

Seven miles from Red Lodge is a quaint and quiet fishing spot named Wild Bill Lake. This small alpine lake offers a scenic location in Custer's National Forest to catch some big fish and feisty trout! The lake is frequently stocked with Rainbow Trout by Montana Fish Wildlife & Parks.



The information is provided by outside sources and deemed reliable but not guaranteed by the brokerage firm, its agents or representatives. Buyers and their agents are encouraged to conduct due diligence, and verify to their satisfaction, the information contained herein regarding property.

Property Maps



The information is provided by outside sources and deemed reliable but not guaranteed by the brokerage firm, its agents or representatives. Buyers and their agents are encouraged to conduct due diligence, and verify to their satisfaction, the information contained herein regarding property.