

**229 Acre Hunting Tract at Gee's Bend with Gorgeous
Timber in Wilcox County**
0 mccloud road
Alberta, AL 36720

\$700,000
229± Acres
Wilcox County



**229 Acre Hunting Tract at Gee's Bend with Gorgeous Timber in Wilcox County
Alberta, AL / Wilcox County**

SUMMARY

Address

0 mccloud road

City, State Zip

Alberta, AL 36720

County

Wilcox County

Type

Hunting Land, Recreational Land, Undeveloped Land, Timberland

Latitude / Longitude

32.082361 / -87.310385

Acreage

229

Price

\$700,000

Property Website

<https://thelandcrafters.com/detail/229-acre-hunting-tract-at-gee-s-bend-with-gorgeous-timber-in-wilcox-county/wilcox/alabama/64398/>



229 Acre Hunting Tract at Gee's Bend with Gorgeous Timber in Wilcox County Alabama, AL / Wilcox County

PROPERTY DESCRIPTION

This Gee's Bend 229-acre timber tract, located in the famous Gee's Bend community of Wilcox County, Alabama. Known for its world-class hunting, this area is celebrated for offering some of the finest deer and turkey hunting in the state. The tract is perfectly equipped for hunting, featuring six established greenfields, an excellent road system, and two convenient entrances.

The property is a diverse mix of hardwood and pine, with several small patch clear cuts that provide ideal bedding habitats for wildlife. This combination of features makes the property not only a prime hunting location but also an excellent investment in timber!

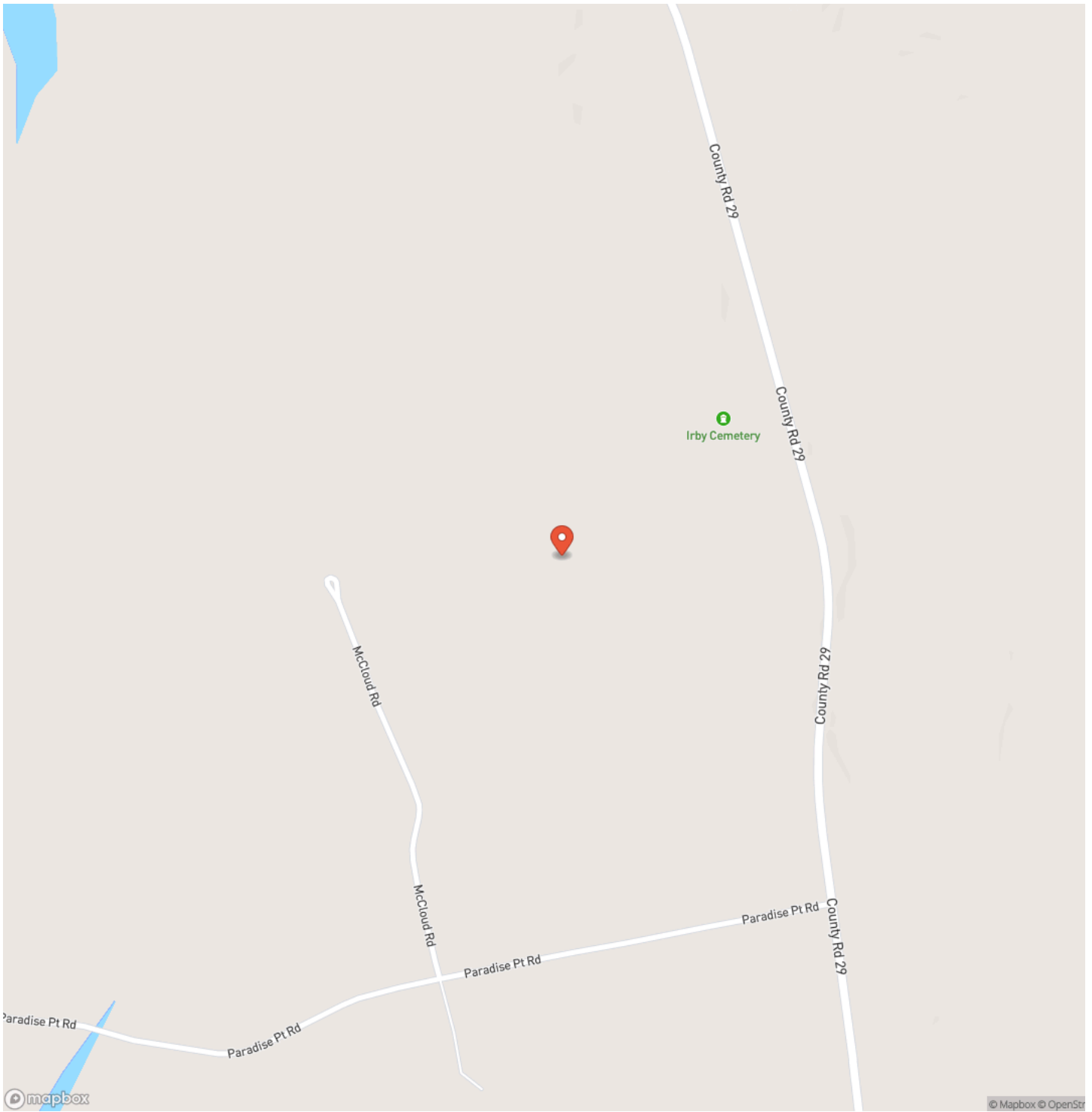
The tract's location provides excellent access to outdoor recreation, including hunting, fishing, and much more, making it an ideal retreat for those who appreciate the area's rich history and charm.

Whether you're looking for a solid timber investment or seeking a secluded getaway, this property at Gee's Bend offers a unique blend of natural beauty and endless possibilities. Call to schedule your showing anytime!

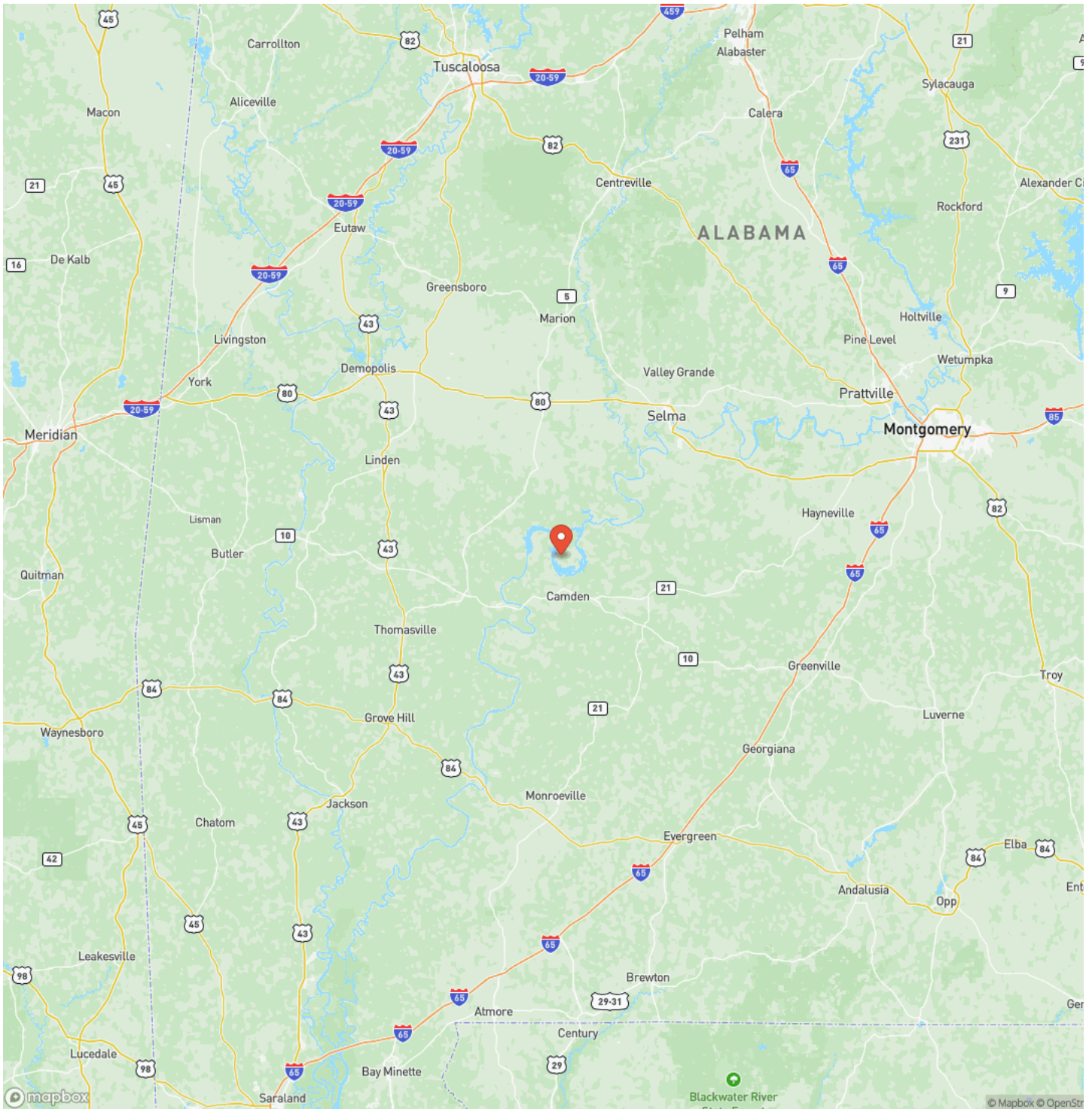
**229 Acre Hunting Tract at Gee's Bend with Gorgeous Timber in Wilcox County
Alberta, AL / Wilcox County**



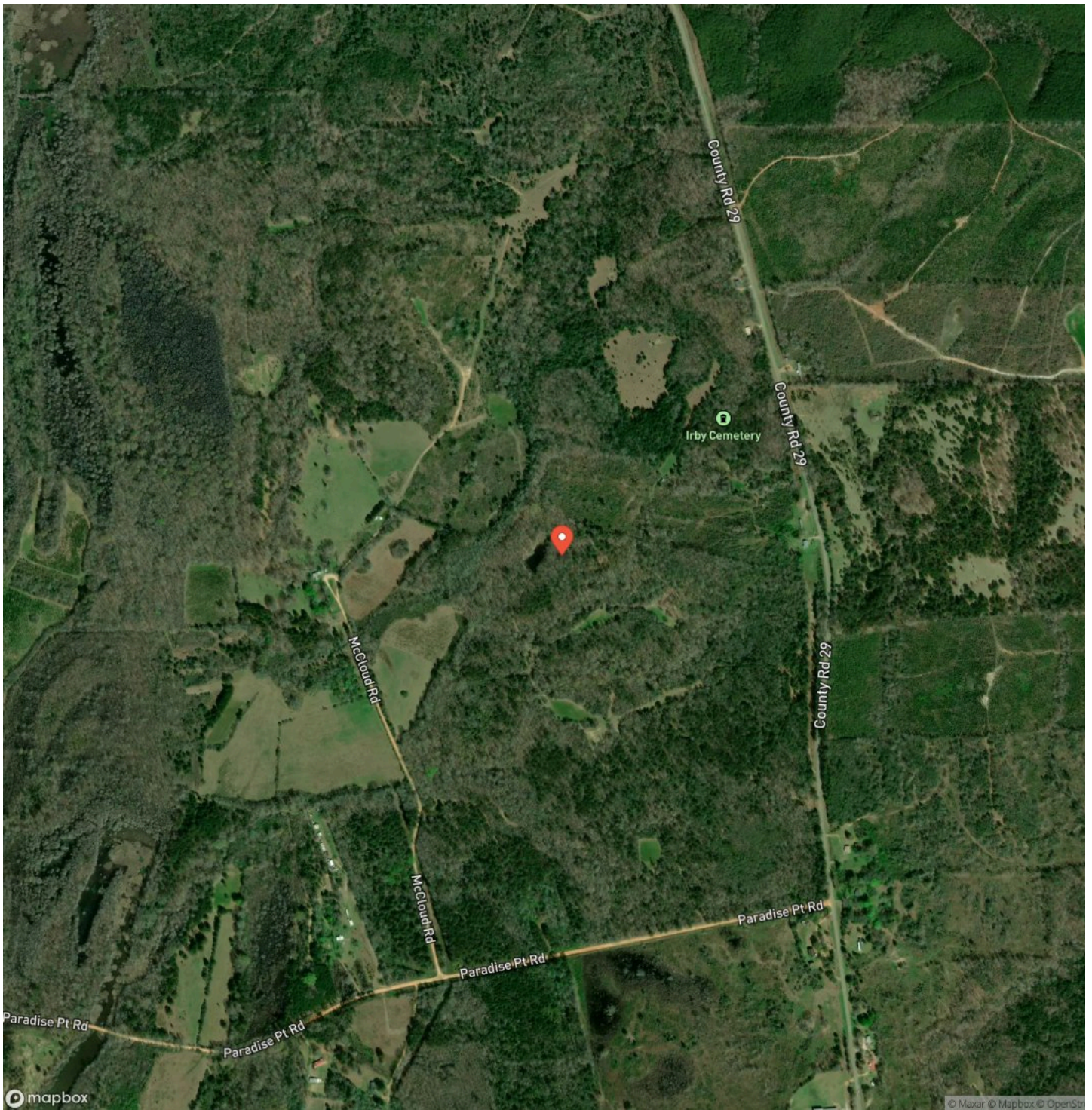
Locator Map



Locator Map



Satellite Map



DISCLAIMERS

Information in this brochure is provided solely for information purposes and does not constitute an offer to sell or advertise real estate outside the states in which broker or agent licensed. The information presented has been obtained from sources deemed to be reliable, but is not guaranteed or warranted by the agent, broker, or the sellers of these properties. This offering is subject to errors, omissions, prior sale, price change, correction or withdrawal from the market without notice. All references to age, square footage, income, expenses, acreage, carrying capacity, and land classification, etc. are approximate. Prospective buyers are chargeable with and expected to conduct their own independent investigation of the information and the property and to rely only on those results. Sellers reserve the right to accept or reject any and all offers without liability to any buyer or cooperating broker.

Maps are provided for illustration purposes only, the accuracy is not warranted. Parcels on interactive maps are not adjusted to match aerial backgrounds. This information is for reference purposes only and is not a legal document. Data maps contain errors. The seller and seller's agent are making known to all potential buyers that there may be variations between the location of the existing fence lines and the legal description of the deeded property. Seller and seller's agent make no warranties with regard to the location of the fence lines in relationship to the deeded property lines, nor does the Seller make any warranties or representations with regard to the specific acreage contained within the fenced property lines. Seller is selling the property in an "as is" condition, which includes the location of the fences as they exist. Boundaries shown on the accompanying maps are approximate, based on county parcel data. The maps are not to scale. The accuracy of the maps is not guaranteed. Prospective buyers are encouraged to verify fence lines, deeded property lines and acreages using a licensed surveyor at their own expense.

Mossy Oak Properties Alabama Land Crafters
4373 Marler Road
Pike Road, AL 36064
(334) 277-6501
<https://thelandcrafters.com/>

