

40 acres Prime Hunting land in Autauga County  
0 county road 165  
Prattville, AL 36068

**\$160,000**  
40± Acres  
Autauga County



**MOULTRIE**

14 Rice Patty

02/26/26 1:33 AM

▶ 50



**MOULTRIE**

14 Rice Patty

02/22/26 12:41 AM

▶



**40 acres Prime Hunting land in Autauga County  
Prattville, AL / Autauga County**

---

**SUMMARY**

**Address**

0 county road 165

**City, State Zip**

Prattville, AL 36068

**County**

Autauga County

**Type**

Hunting Land, Recreational Land, Undeveloped Land, Timberland

**Latitude / Longitude**

32.482451 / -86.609228

**Acreage**

40

**Price**

\$160,000

**Property Website**

<https://thelandcrafters.com/detail/40-acres-prime-hunting-land-in-autauga-county-autauga-alabama/107014/>



## 40 acres Prime Hunting land in Autauga County Prattville, AL / Autauga County

---

### **PROPERTY DESCRIPTION**

If you've been searching for an affordable hunting tract with big-buck potential just minutes from town, this property deserves a closer look.

Conveniently located only 10 minutes from Prattville, this tract offers the perfect opportunity for a quick afternoon hunt after work or an evening in the woods with family and friends.

Highlights include:

- Recently cruised timber with an estimated value of approximately \$51,000
- Extensive internal road system providing excellent access throughout the property
- Deeded easement access
- Surrounded by large timber company holdings, offering exceptional privacy and limited neighboring pressure
- Outstanding habitat and strong deer hunting potential

Whether you're looking for a recreational getaway, a timber investment, or a manageable hunting property close to home, this tract checks all the boxes.

Shown by appointment only.

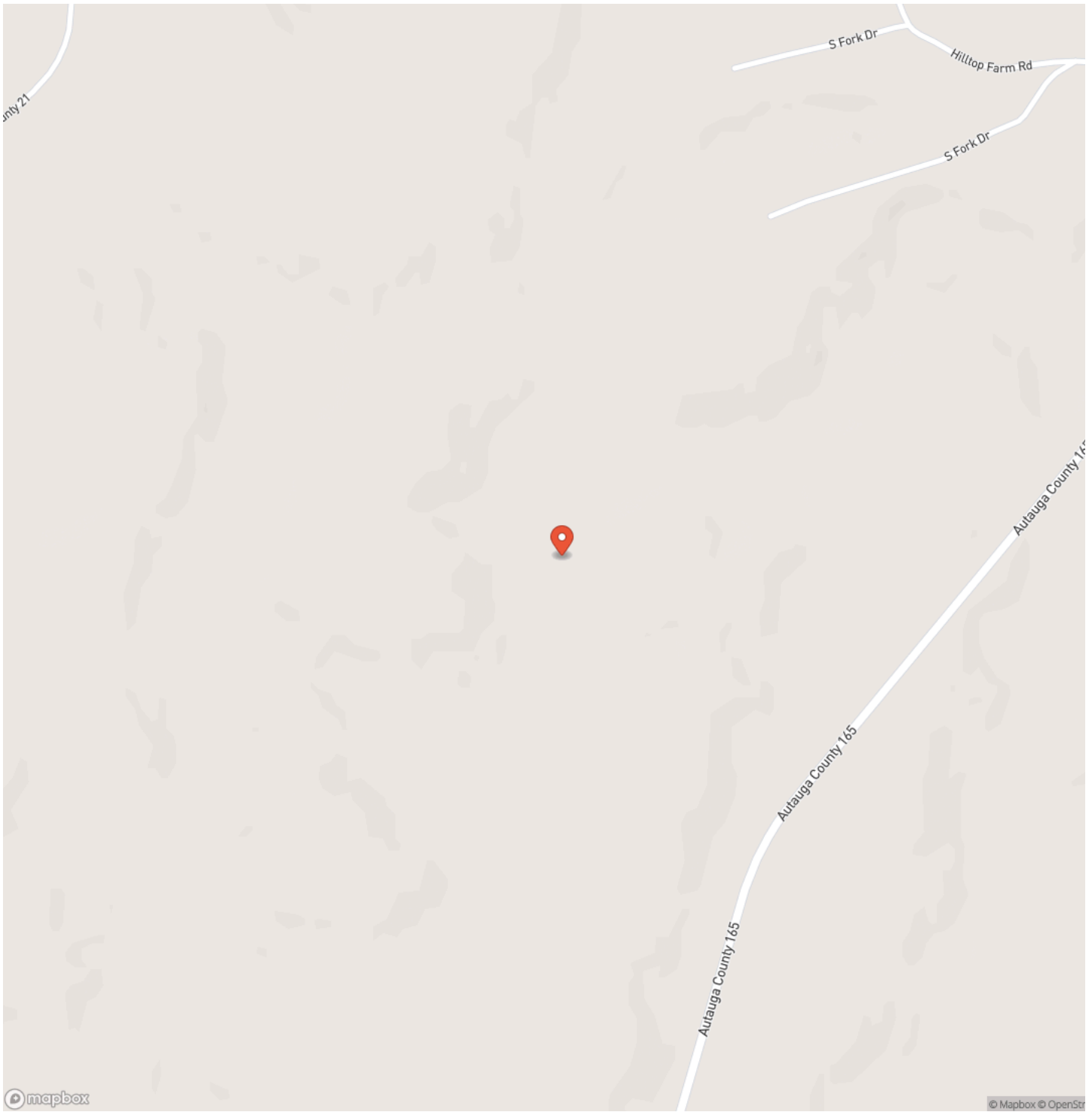


40 acres Prime Hunting land in Autauga County  
Prattville, AL / Autauga County

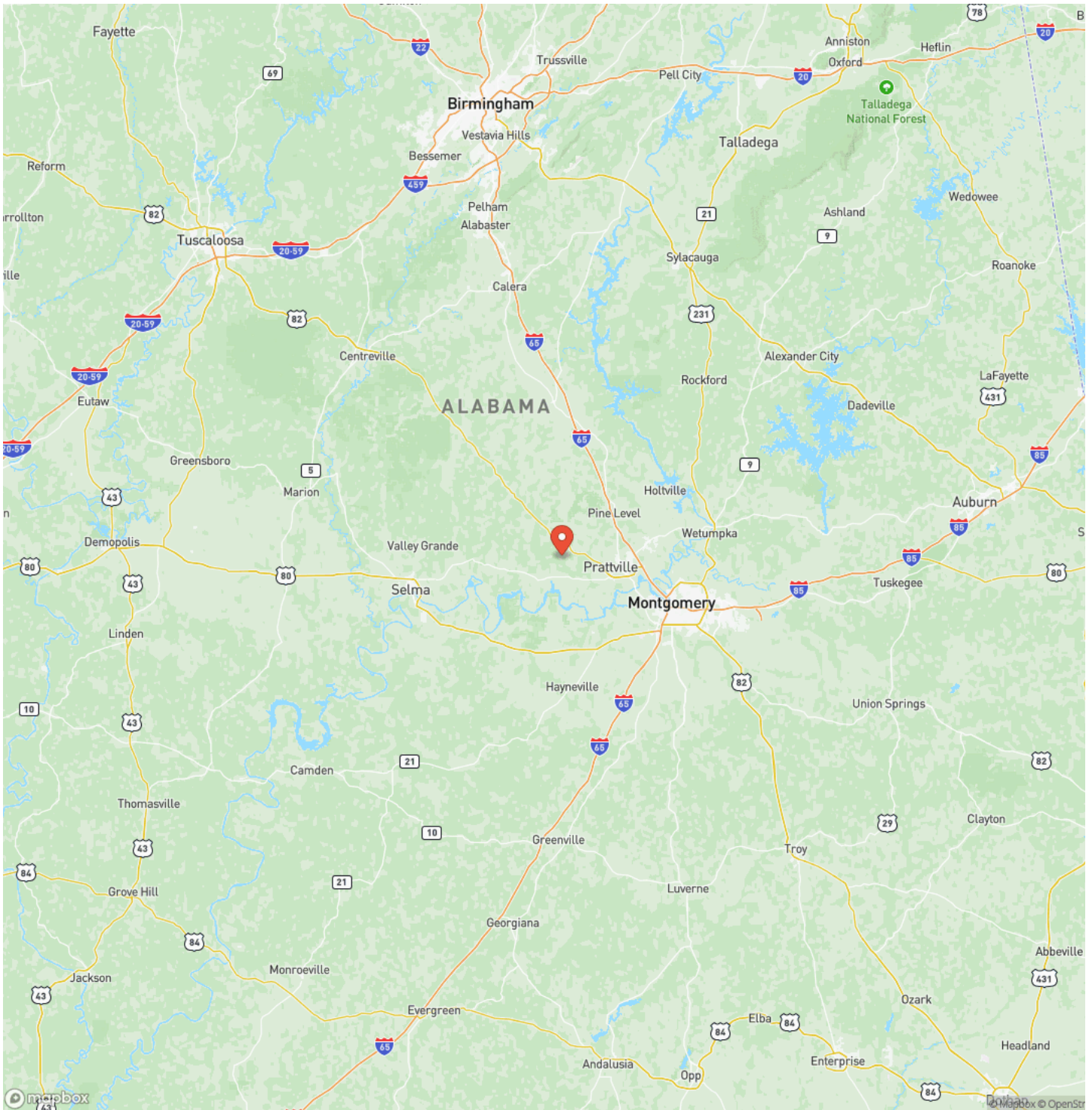
---



## Locator Map

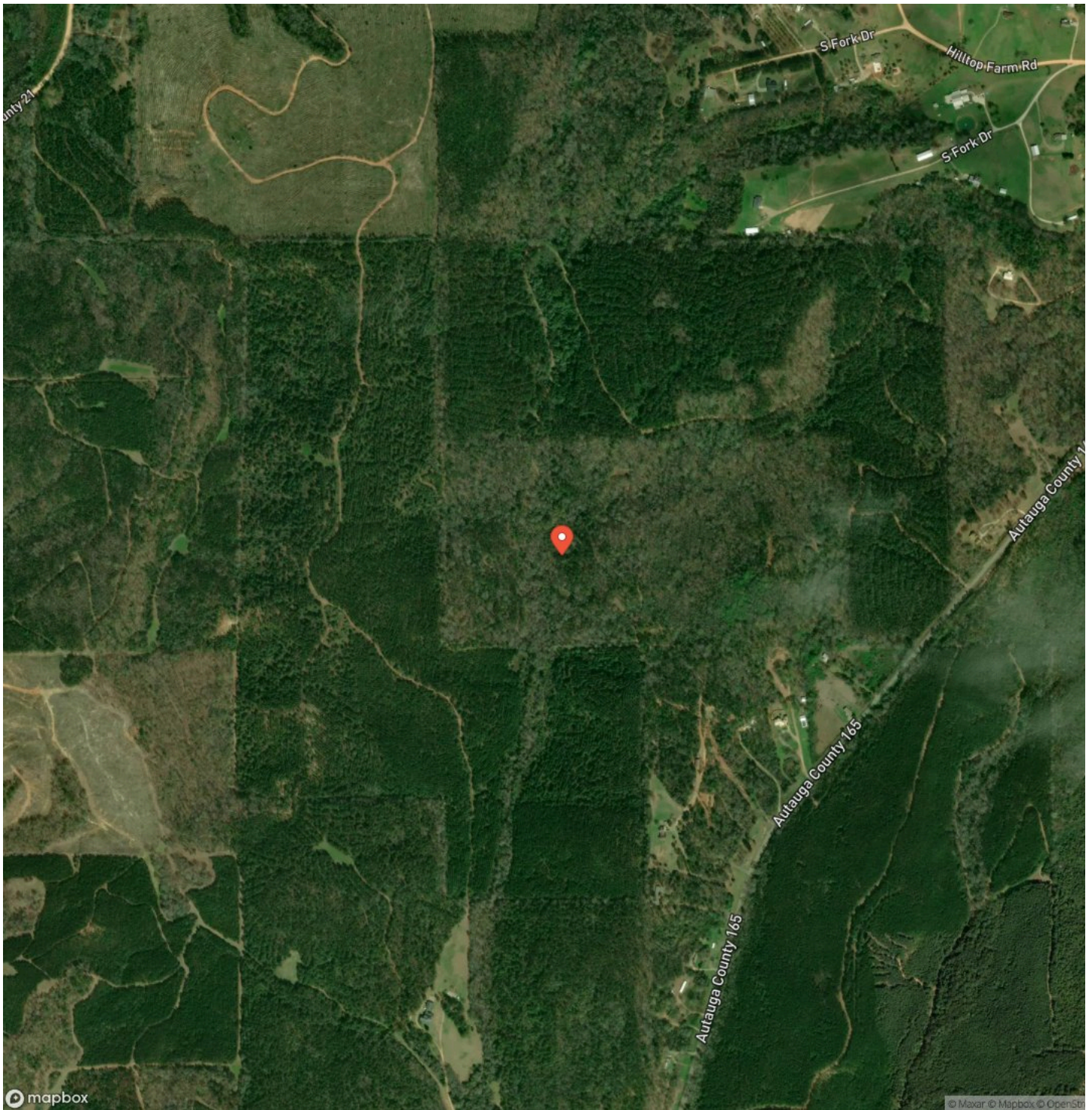


# Locator Map



40 acres Prime Hunting land in Autauga County  
Prattville, AL / Autauga County

## Satellite Map







## **DISCLAIMERS**

Information in this brochure is provided solely for information purposes and does not constitute an offer to sell or advertise real estate outside the states in which broker or agent licensed. The information presented has been obtained from sources deemed to be reliable, but is not guaranteed or warranted by the agent, broker, or the sellers of these properties. This offering is subject to errors, omissions, prior sale, price change, correction or withdrawal from the market without notice. All references to age, square footage, income, expenses, acreage, carrying capacity, and land classification, etc. are approximate. Prospective buyers are chargeable with and expected to conduct their own independent investigation of the information and the property and to rely only on those results. Sellers reserve the right to accept or reject any and all offers without liability to any buyer or cooperating broker.

Maps are provided for illustration purposes only, the accuracy is not warranted. Parcels on interactive maps are not adjusted to match aerial backgrounds. This information is for reference purposes only and is not a legal document. Data maps contain errors. The seller and seller's agent are making known to all potential buyers that there may be variations between the location of the existing fence lines and the legal description of the deeded property. Seller and seller's agent make no warranties with regard to the location of the fence lines in relationship to the deeded property lines, nor does the Seller make any warranties or representations with regard to the specific acreage contained within the fenced property lines. Seller is selling the property in an "as is" condition, which includes the location of the fences as they exist. Boundaries shown on the accompanying maps are approximate, based on county parcel data. The maps are not to scale. The accuracy of the maps is not guaranteed. Prospective buyers are encouraged to verify fence lines, deeded property lines and acreages using a licensed surveyor at their own expense.

---

**Mossy Oak Properties Alabama Land Crafters**

4373 Marler Road

Pike Road, AL 36064

(334) 277-6501

<https://thelandcrafters.com/>

---

