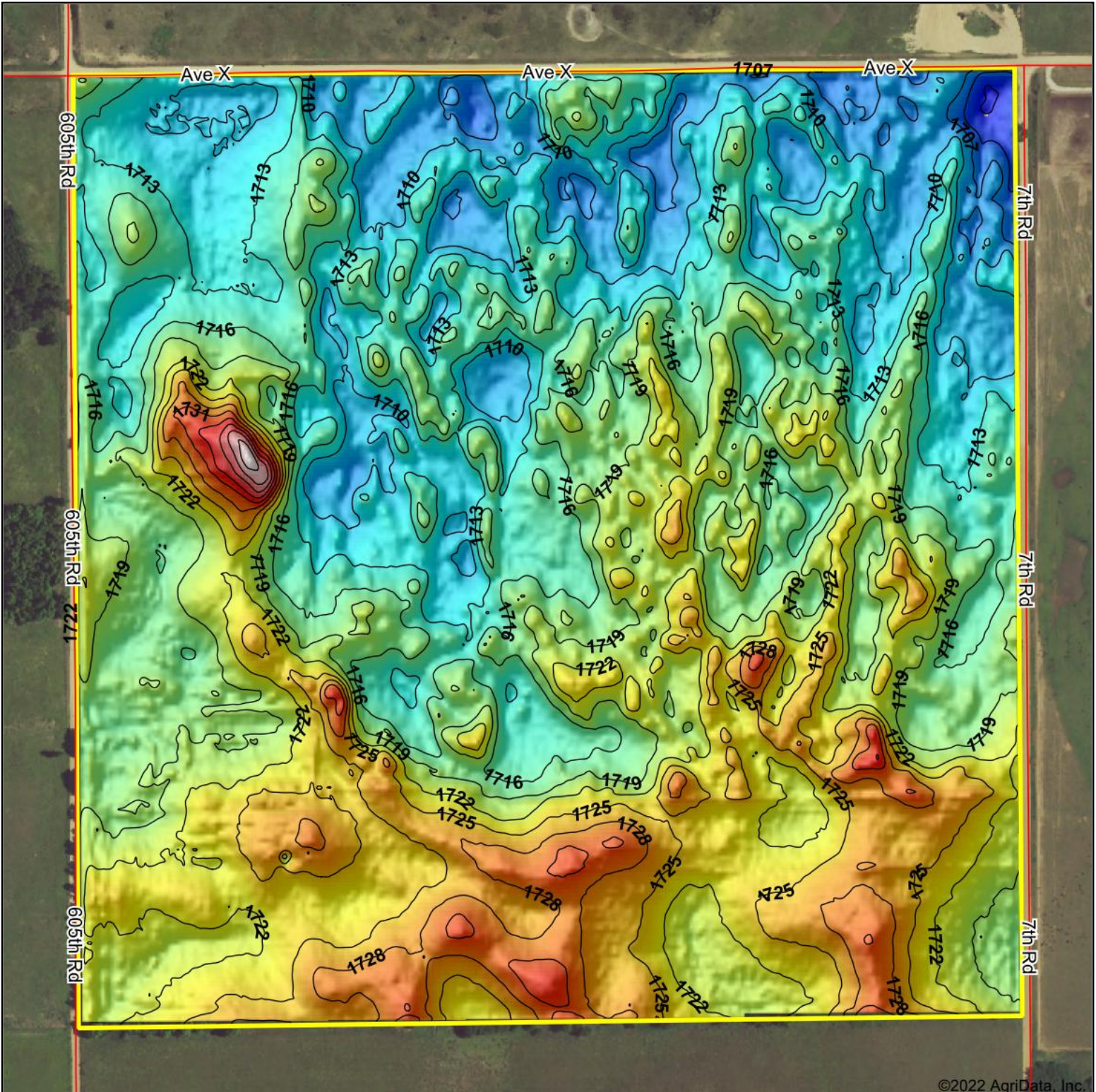


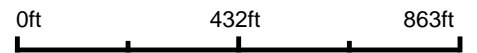
Topography Hillshade



©2022 AgriData, Inc.



Source: USGS 3 meter dem



Interval(ft): 3

Min: 1,700.6

Max: 1,745.1

Range: 44.5

Average: 1,717.9

Standard Deviation: 6.23 ft



7/5/2022

36-21S-10W
Rice County
Kansas

map center: 38° 11' 5.02, -98° 22' 1.05



RED CEDAR LAND CO.
 Maps Provided By:



© AgriData, Inc. 2021 www.AgriDataInc.com