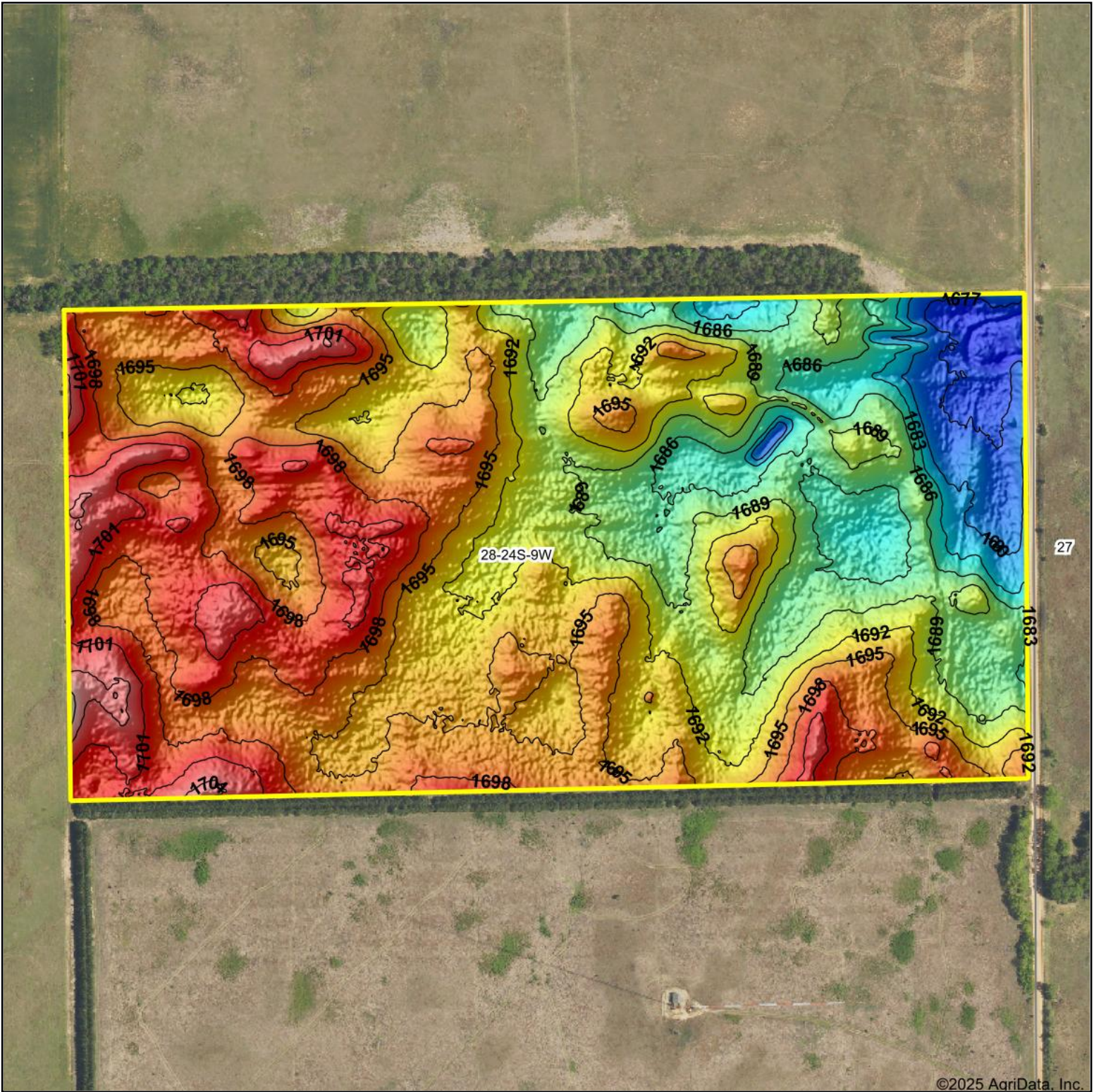
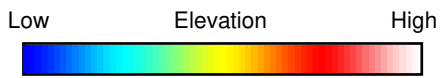


Topography Hillshade



©2025 AgriData, Inc.



Source: USGS 1 meter dem



Interval(ft): 3

Min: 1,674.8

Max: 1,708.9

Range: 34.1

Average: 1,692.9

Standard Deviation: 6.14 ft



28-24S-9W
Reno County
Kansas

Boundary Center: 37° 55' 54.46, -98° 18' 42.9



RED CEDAR LAND CO.

Maps Provided By:



© AgriData, Inc. 2023

www.AgriDataInc.com