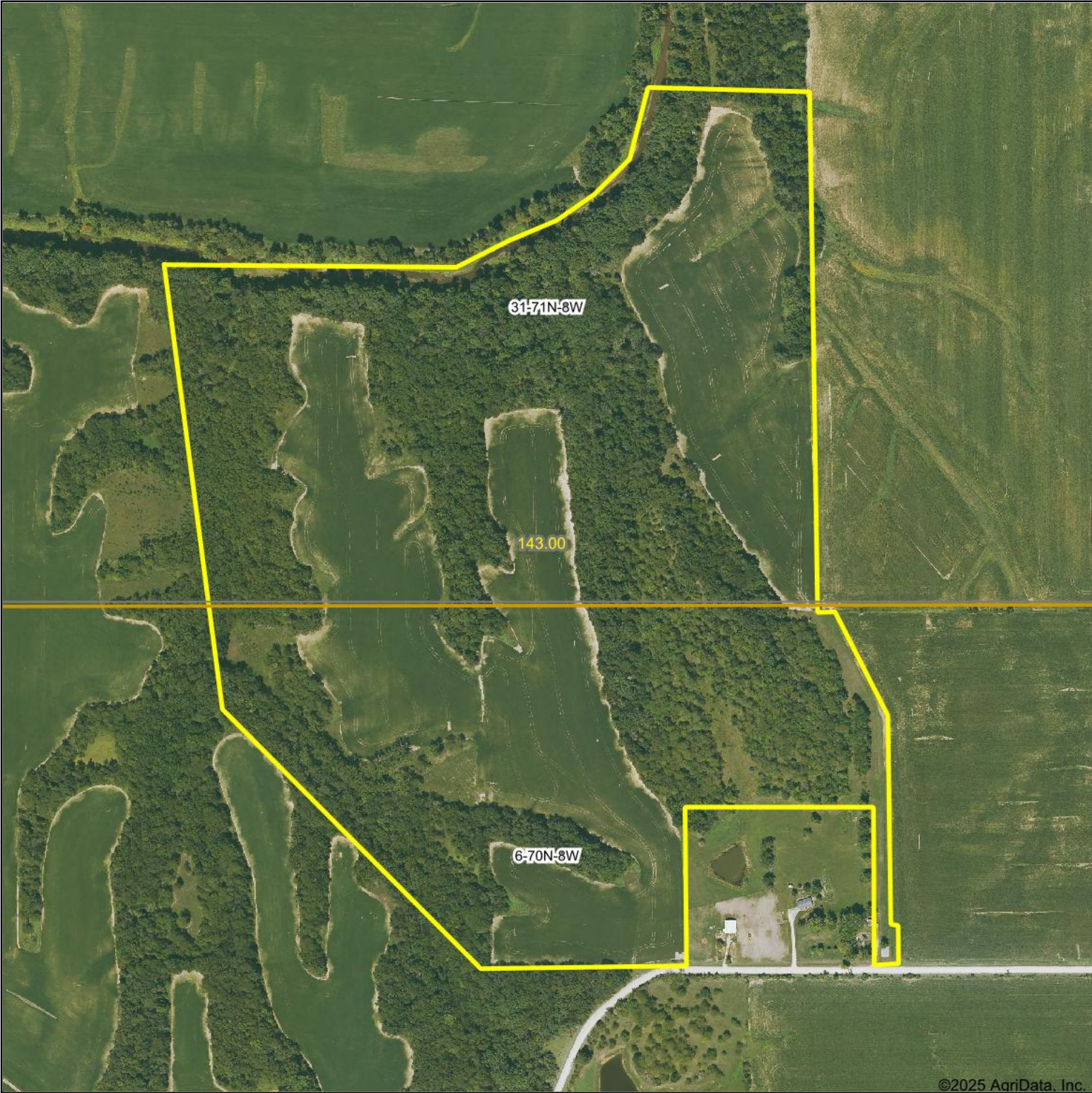


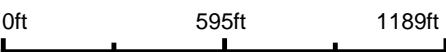
Aerial Map



©2025 AgriData, Inc.



Boundary Center: 40° 54' 6.58, -91° 49' 21.68



31-71N-8W
Jefferson County
Iowa



Maps Provided By:
 **surety**
CUSTOMIZED ONLINE MAPPING
© AgriData, Inc. 2023 www.AgriDataInc.com

8/24/2025