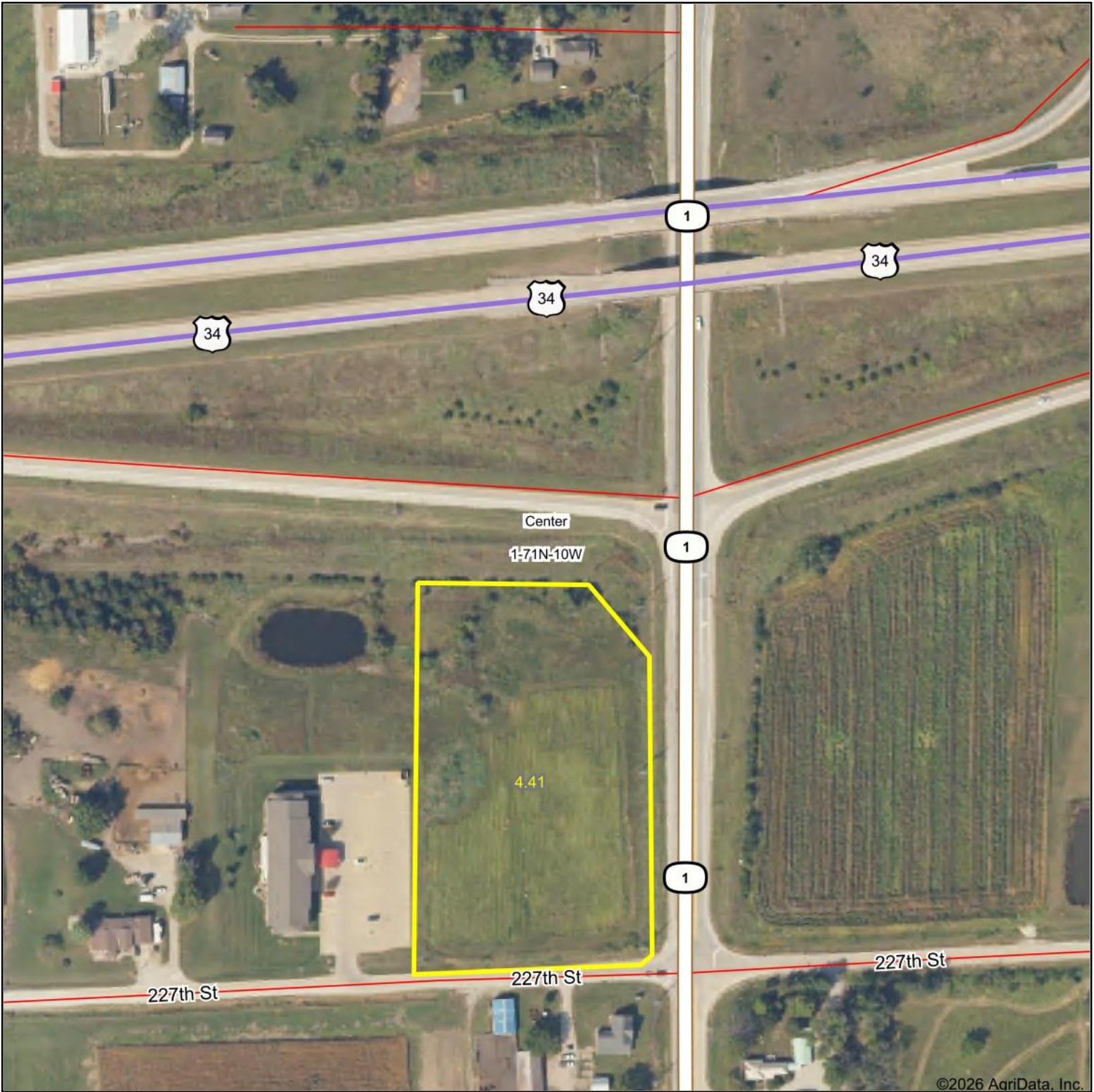


# Aerial Map



Boundary Center: 40° 58' 53.56, -91° 57' 50.56



1-71N-10W  
Jefferson County  
Iowa



Maps Provided By:  
 **surety**  
CUSTOMIZED ONLINE MAPPING  
© AgriData, Inc. 2025 www.AgriDataInc.com

6/16/2026