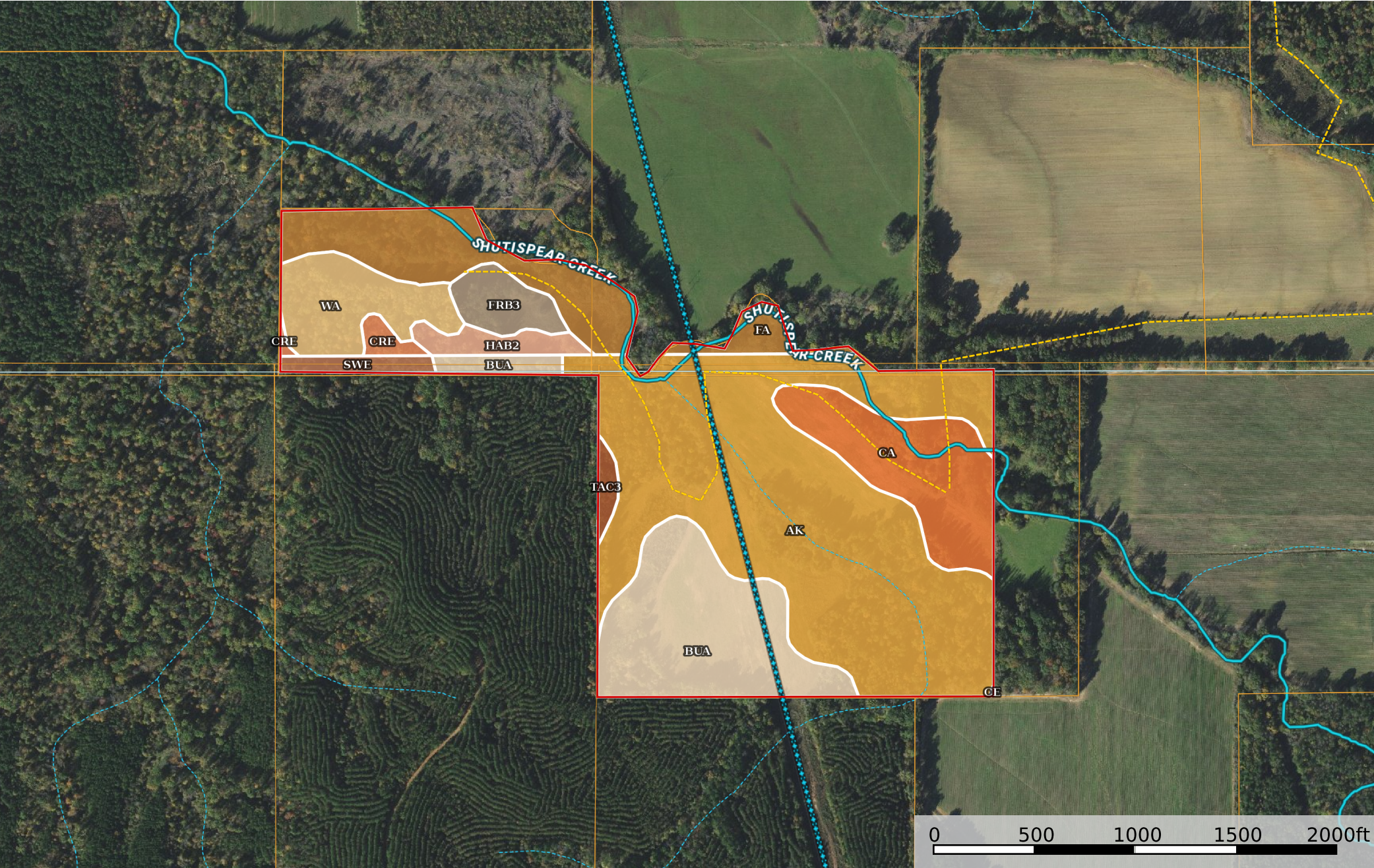



Honey Hole
Webster County, Calhoun County, Mississippi, AC +/-



|  72.3 ac









SOIL CODE	SOIL DESCRIPTION	ACRES	%	CAP
Ce	Chenneby silt loam	0.0	0.01	2w
Ca	Cascilla silt loam	7.7	10.6	2w
BuA	Bude silt loam, 0 to 2 percent slopes	11.8	16.38	2w
Ak	Arkabutla silt loam	33.0	45.68	2w
TaC3	Tippah silt loam, 5 to 8 percent slopes, severely erode d	0.6	0.8	4e
FrB3	Freeland silt loam, 2 to 5 percent slopes, severely eroded (providence)	2.2	2.99	3e
HaB2	Hatchie silt loam, 2 to 5 percent slopes, eroded (bude)	1.6	2.17	3e
CrE	Cuthbert, Dulac, and Ruston soils, 12 to 35 percent slopes (sweatman, providence and smithdale)	0.7	0.99	7e
Wa	Waverly silt loam (rosebloom)	4.8	6.69	3w
Fa	Falaya silt loam (oaklimeter)	8.9	12.29	2w
SWE	Sweatman-Providence association, 12 to 35 percent slopes	1.0	1.38	7e
TOTALS		72.3	100%	2.25

Capability Legend

Increased Limitations and Hazards

Decreased Adaptability and Freedom of Choice Users

Land, Capability

								
	1	2	3	4	5	6	7	8
'Wild Life'	•	•	•	•	•	•	•	•
Forestry	•	•	•	•	•	•	•	
Limited	•	•	•	•	•	•	•	
Moderate	•	•	•	•	•	•		
Intense	•	•	•	•	•			
Limited	•	•	•	•				
Moderate	•	•	•					
Intense	•	•						
Very Intense	•							

Grazing Cultivation

(c) climatic limitations (e) susceptibility to erosion

(s) soil limitations within the rooting zone (w) excess of water