



MOSSY OAK®
PROPERTIES
Bottomland Real Estate

1,160 ACRES
IN MADISON
COUNTY

LAKE CAVALIER ROAD
MADISON, MISSISSIPPI
39341



\$10,850,000

This tract offers a rare opportunity to purchase a very large tract located in southern Madison County, (890 acres) and east Hinds County (270 acres). From beautiful rolling pastures, to mature hardwood creek bottoms and gently rolling hills, the possibilities are endless. This property has road frontage on Lake Cavalier Road, Ancient Oaks, Society Ridge Road and Greens Crossing Road. The portion of the property in Madison County is Residential Estate, with the exception of five acres of frontage on Lake Cavalier Road that is Zoned Commercial. Property located in Hinds County is zoned Agricultural. The property is in the Madison Station Attendance Zone and The Clinton Attendance Zone.



Fred Zepponi III, MAI, SRA

Broker
Cell: 662-418-6767
Office: 662-495-1121
fzepponi@mossyoakproperties.com

5741 Highway 45 Alt. South
West Point, MS 39773
www.mossyoakproperties.com

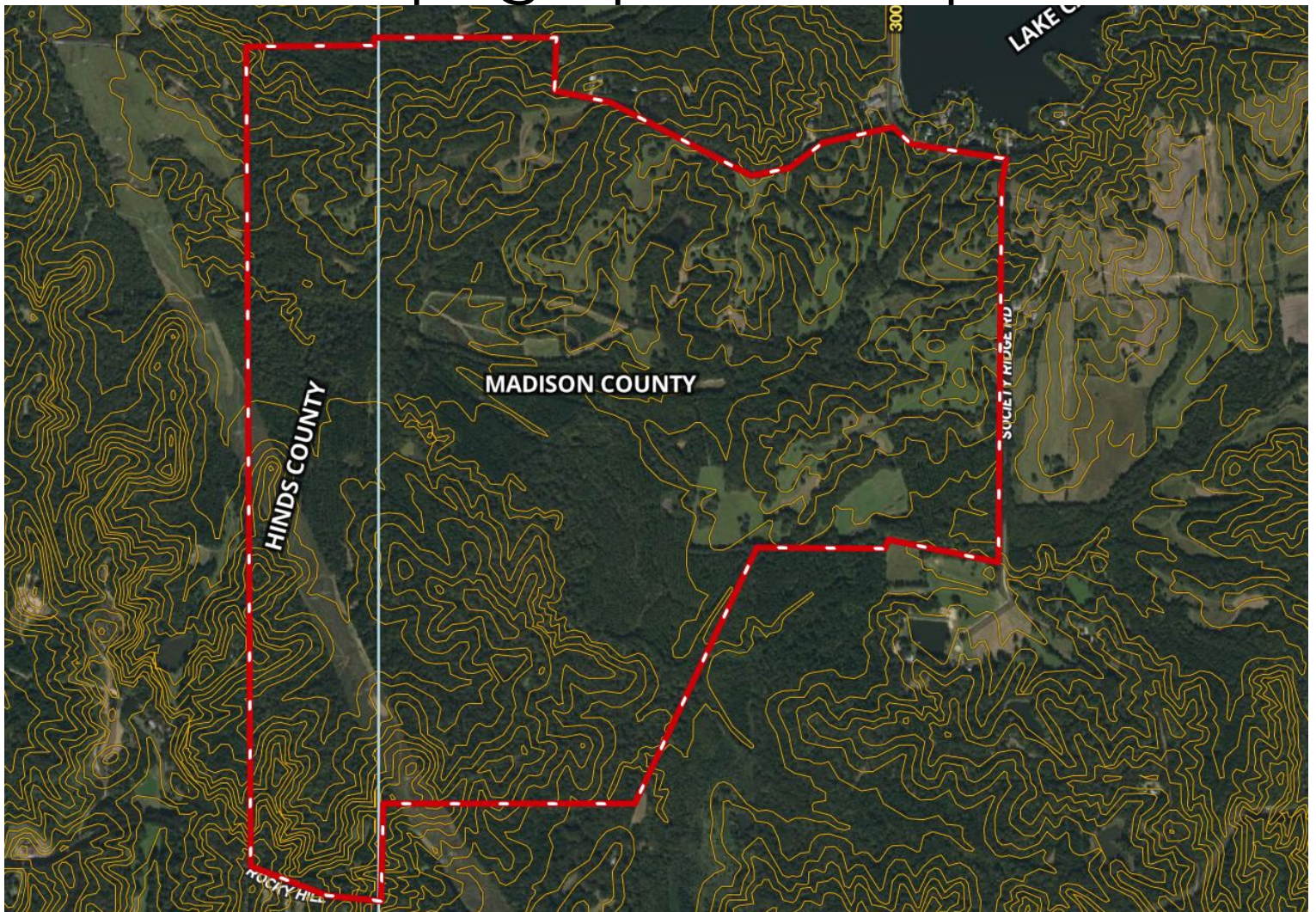


MOSSY OAK®
PROPERTIES
Bottomland Real Estate

Aerial Property Map



Topographical Map



Flood Zone Map



Location Map

