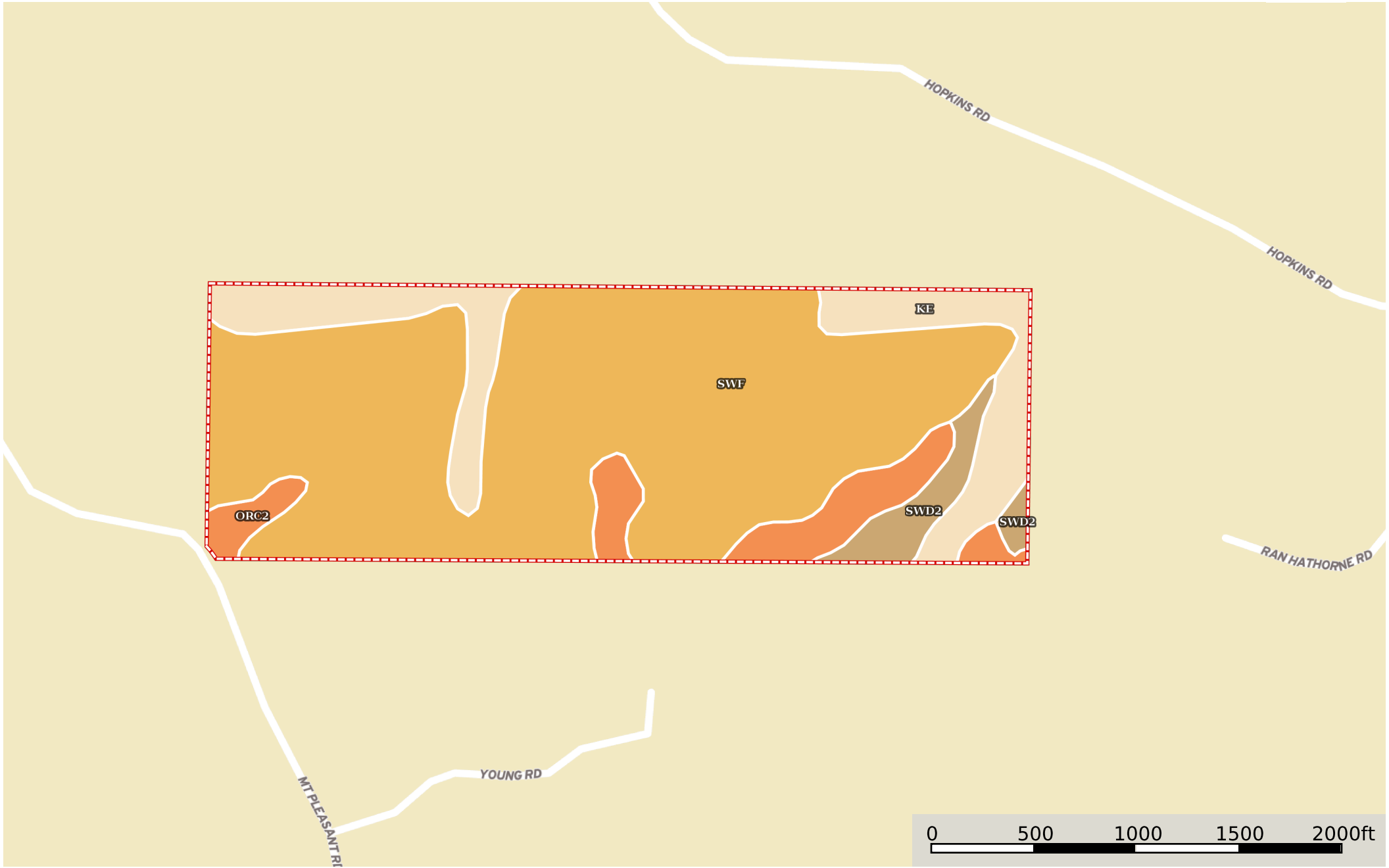



Winston County 120 Acres-Vicknair  
Winston County, Mississippi, 120 AC +/-



 Boundary



## Boundary 122.19 ac

SOIL CODE	SOIL DESCRIPTION	ACRES	%	CPI	NCCPI	CAP
SwF	Sweatman fine sandy loam, 15 to 35 percent slopes	87.16	71.34	0	17	7e
Ke	Kinston loam, 0 to 2 percent slopes, frequently flooded	19.34	15.83	0	41	6w
OrC2	Ora fine sandy loam, 5 to 8 percent slopes, eroded	10.67	8.73	0	39	3e
SwD2	Sweatman fine sandy loam, 8 to 15 percent slopes, moderately eroded	5.02	4.11	0	66	6e
TOTALS		122.19(*)	100%	-	24.73	6.45

(\*) Total acres may differ in the second decimal compared to the sum of each acreage soil. This is due to a round error because we only show the acres of each soil with two decimal.

### Capability Legend

Increased Limitations and Hazards

Decreased Adaptability and Freedom of Choice Users

Land, Capability

	1	2	3	4	5	6	7	8
'Wild Life'	•	•	•	•	•	•	•	•
Forestry	•	•	•	•	•	•	•	
Limited	•	•	•	•	•	•	•	
Moderate	•	•	•	•	•	•		
Intense	•	•	•	•	•			
Limited	•	•	•	•				
Moderate	•	•	•					
Intense	•	•						
Very Intense	•							

### Grazing Cultivation

(c) climatic limitations (e) susceptibility to erosion

(s) soil limitations within the rooting zone (w) excess of water