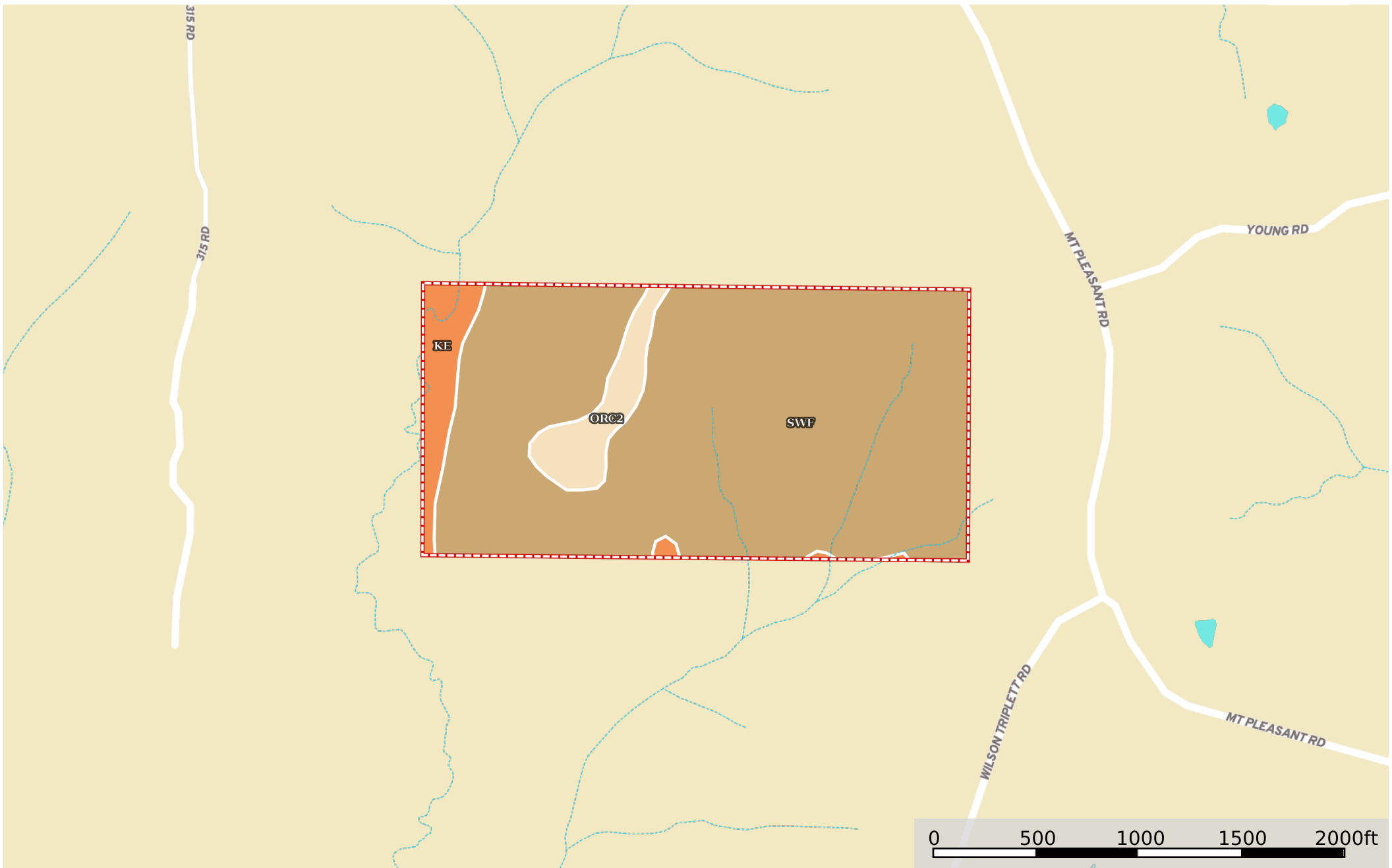


Winston County Barnes Tracts

Winston County, Mississippi, 120 AC +/-



-  Boundary
-  Stream, Intermittent
-  River/Creek
-  Water Body

|  Boundary 80.11 ac

SOIL CODE	SOIL DESCRIPTION	ACRES	%	CPI	NCCPI	CAP
SwF	Sweatman fine sandy loam, 15 to 35 percent slopes	70.72	88.28	0	17	7e
Ke	Kinston loam, 0 to 2 percent slopes, frequently flooded	4.79	5.98	0	41	6w
OrC2	Ora fine sandy loam, 5 to 8 percent slopes, eroded	4.6	5.74	0	39	3e
TOTALS		80.11(*)	100%	-	19.7	6.71

(*) Total acres may differ in the second decimal compared to the sum of each acreage soil. This is due to a round error because we only show the acres of each soil with two decimal.

