

5.71 Acres Mooreville, MS
Hwy 178
Mooreville, MS 38857

\$69,900
5.71± Acres
Lee County



5.71 Acres Mooreville, MS
Mooreville, MS / Lee County

SUMMARY

Address

Hwy 178

City, State Zip

Mooreville, MS 38857

County

Lee County

Type

Farms, Lot, Hunting Land, Recreational Land, Undeveloped Land

Latitude / Longitude

34.265832 / -88.607455

Acreage

5.71

Price

\$69,900

Property Website

<https://www.mossoakproperties.com/property/5-71-acres-mooreville-ms/lee/mississippi/103153/>



5.71 Acres Mooreville, MS Mooreville, MS / Lee County

PROPERTY DESCRIPTION

5.71± acre property in Mooreville, MS

Ideally located with road frontage along Highway 178 and County Road 1310. Positioned just 1.7 miles from downtown Mooreville and only 5.6 miles from Tupelo, this property offers the perfect balance of small-town living with convenient access to shopping, dining, and employment opportunities in Tupelo.

Situated within the highly sought-after Mooreville School District, this tract features flat, usable topography, making it an excellent candidate for residential development, a private homesite, or potential investment use. With ample road frontage and easy access from two roads, the property provides flexibility for multiple entry points or future subdivision.

Utilities are nearby, and the open landscape allows for easy site preparation, reducing development costs. Whether you're looking to build your dream home, establish a small development, or invest in growing Lee County land, this property offers outstanding potential in a rapidly developing area.

Don't miss this opportunity to own acreage in a desirable location between Mooreville and Tupelo—where convenience, accessibility, and opportunity meet.

Hunter McCool

Certified Land Specialist

Central MS Managing Broker

Office: [662-494-1121](tel:662-494-1121)

Cell: [662-295-7447](tel:662-295-7447)

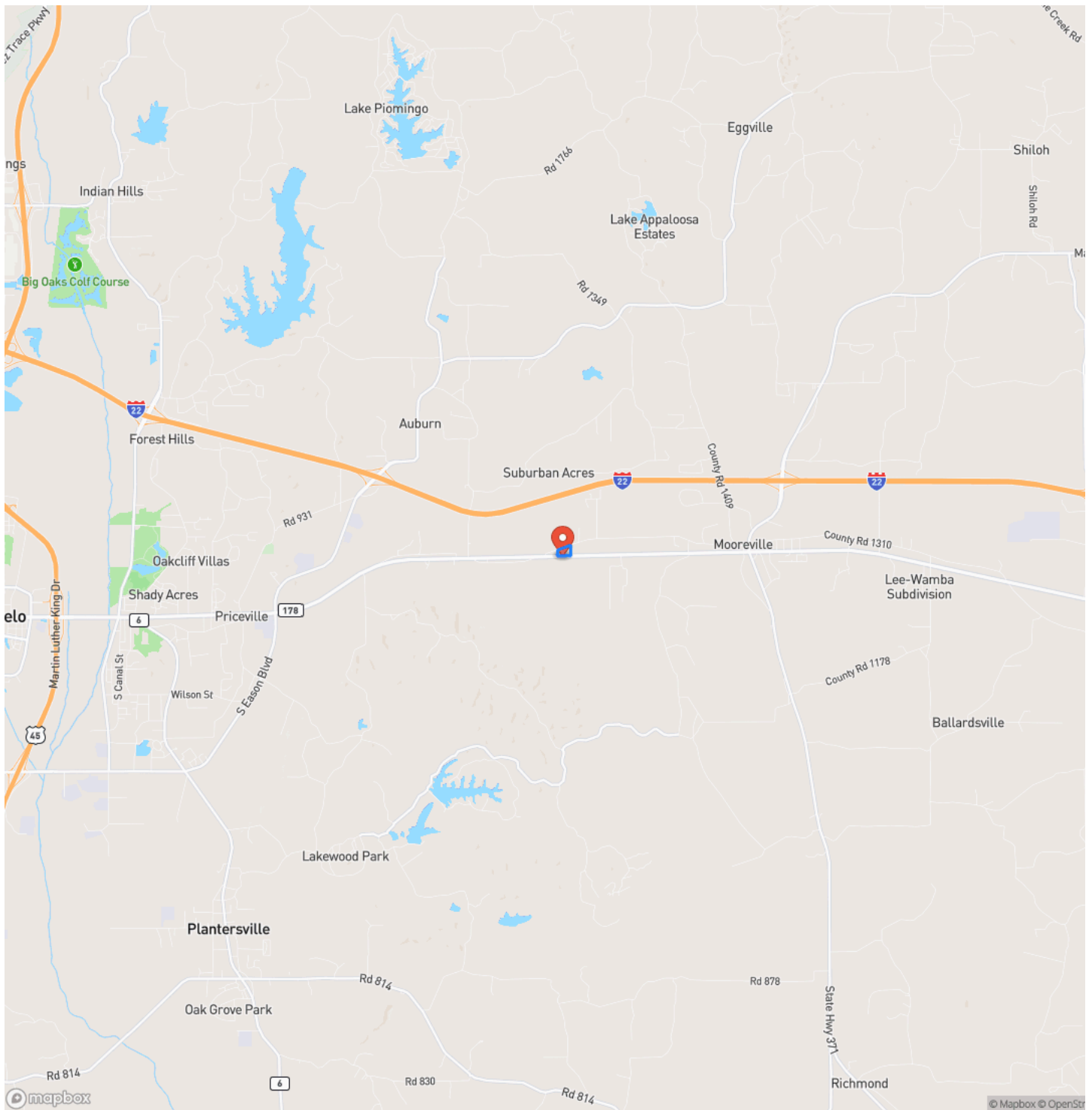
hmccool@mossyoakproperties.com



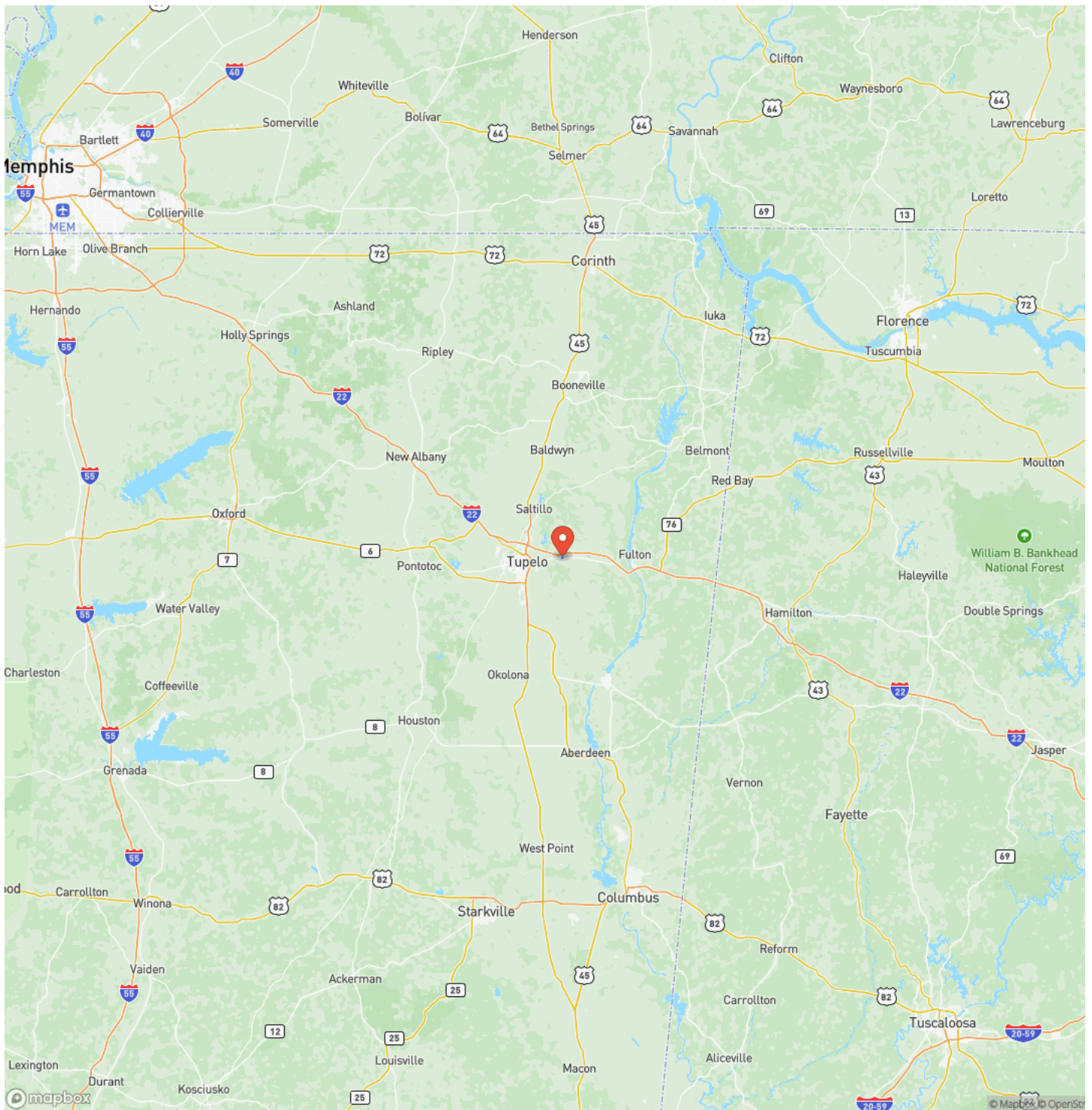
5.71 Acres Mooreville, MS
Mooreville, MS / Lee County



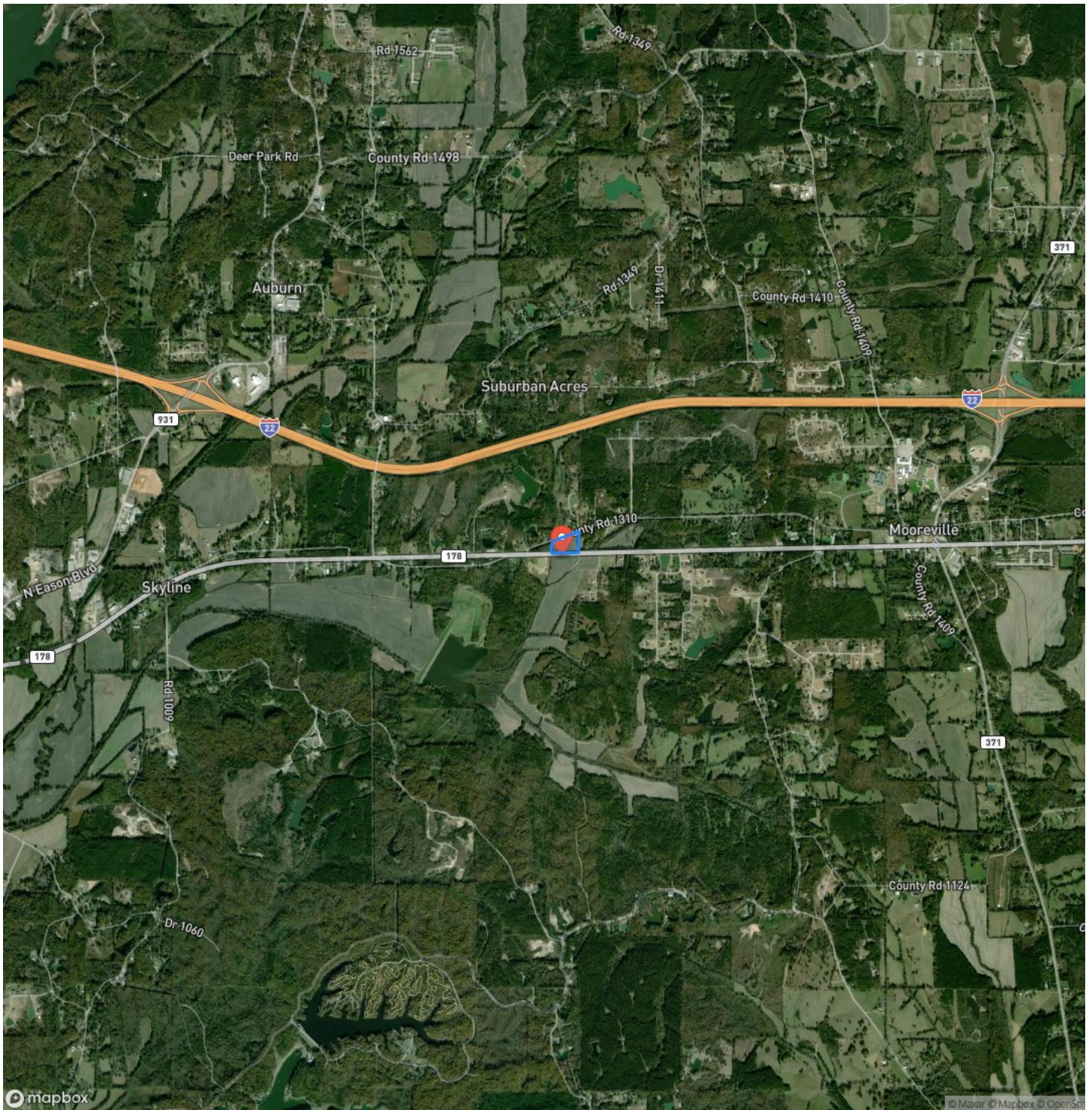
Locator Map



Locator Map



Satellite Map



DISCLAIMERS

All boundaries are approximate and should be verified by the buyer.



Mossy Oak Properties Bottomland Real Estate

5795 Highway 45 Alt S

West Point, MS 39773

(662) 495-1121

<https://www.mossoakproperties.com/>

