

**\$265,000**  
**11.400± Acres**  
**Leake County**

Leake County



**MossyOakProperties.com**



## Home and Large Shops on 11.4 +/- acres Walnut Grove, MS Walnut Grove, MS / Leake County

### SUMMARY

#### Address

1368 Highway 487 East

#### City, State Zip

Walnut Grove, MS 39819

#### County

Leake County

#### Type

Residential Property, Hunting Land, Farms, Recreational Land,  
Horse Property

#### Latitude / Longitude

32.595341 / -89.346946

#### Taxes (Annually)

482

#### Dwelling Square Feet

1700

#### Bedrooms / Bathrooms

3 / 2

#### Acreage

11.400

#### Price

\$265,000

#### Property Website

<https://www.mossyoakproperties.com/property/home-and-large-shops-on-11-4-acres-walnut-grove-ms-leake-mississippi/31161/>



## Home and Large Shops on 11.4 +/- acres Walnut Grove, MS

### Walnut Grove, MS / Leake County

---

#### **PROPERTY DESCRIPTION**

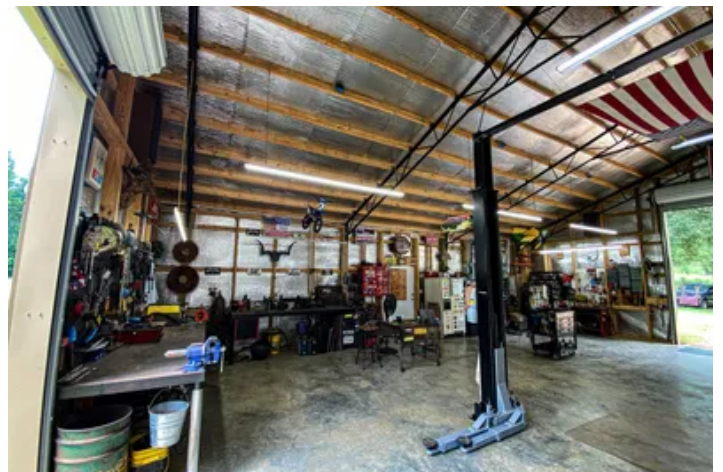
This property is located at 1368 Highway 487 East in Walnut Grove, MS just north of Sebastopol in Leake County. The 1,700 +/- sqft 3-bed 2-bath home and large 40x40 shop sits on a beautiful 11.4 +/- acres that has been well taken care of. The shop is around 2 years old and has three roll up doors, truck lift, full bathroom, and a heated/cooled office. Towards the back of the property you will find a large 60x40 shop and a big shed. This would be a great place to set up a mini farm. Come check out this beautiful property today [662-295-7447](tel:662-295-7447) !



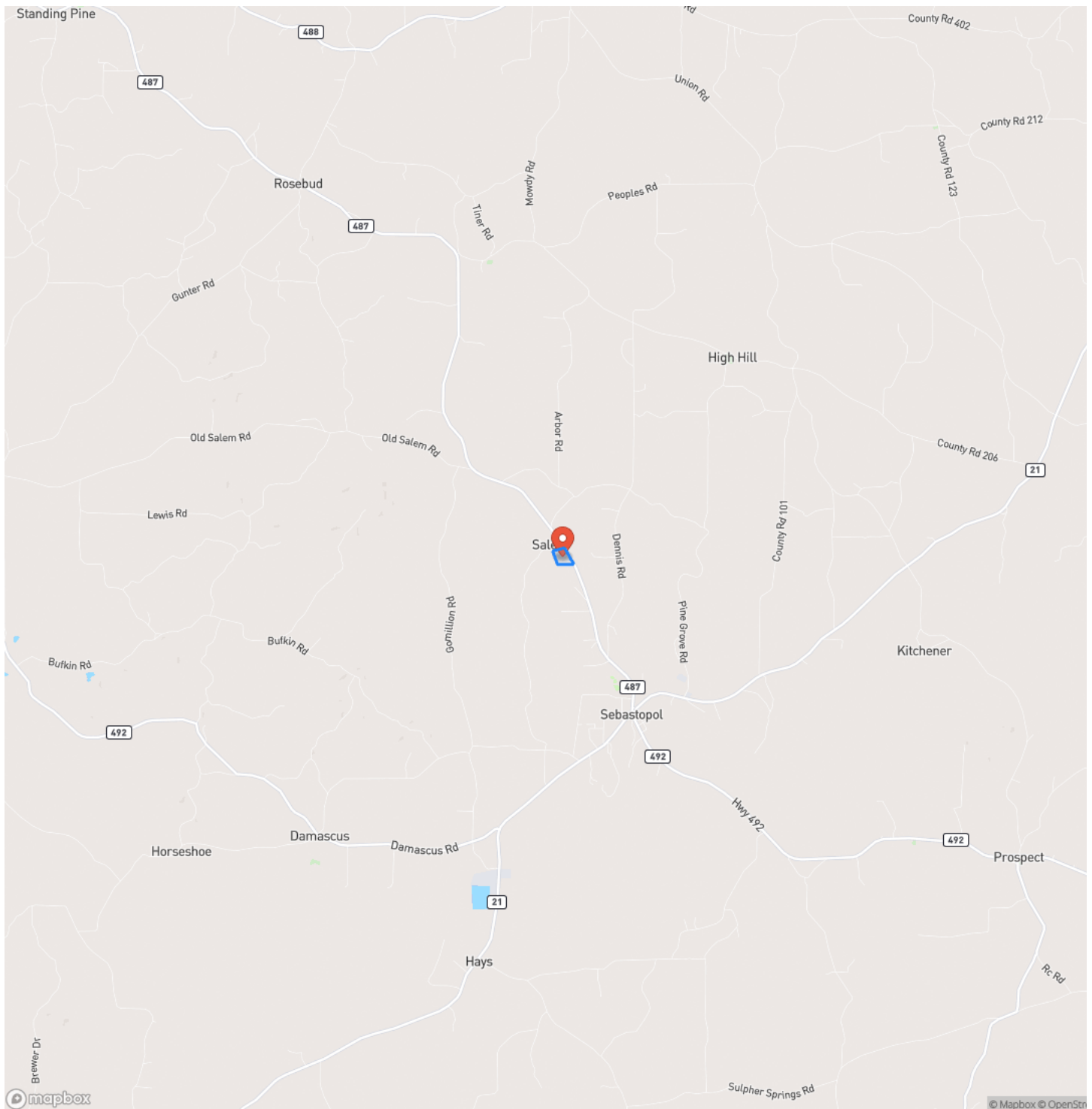


Home and Large Shops on 11.4 +/- acres Walnut Grove, MS  
Walnut Grove, MS / Leake County

---

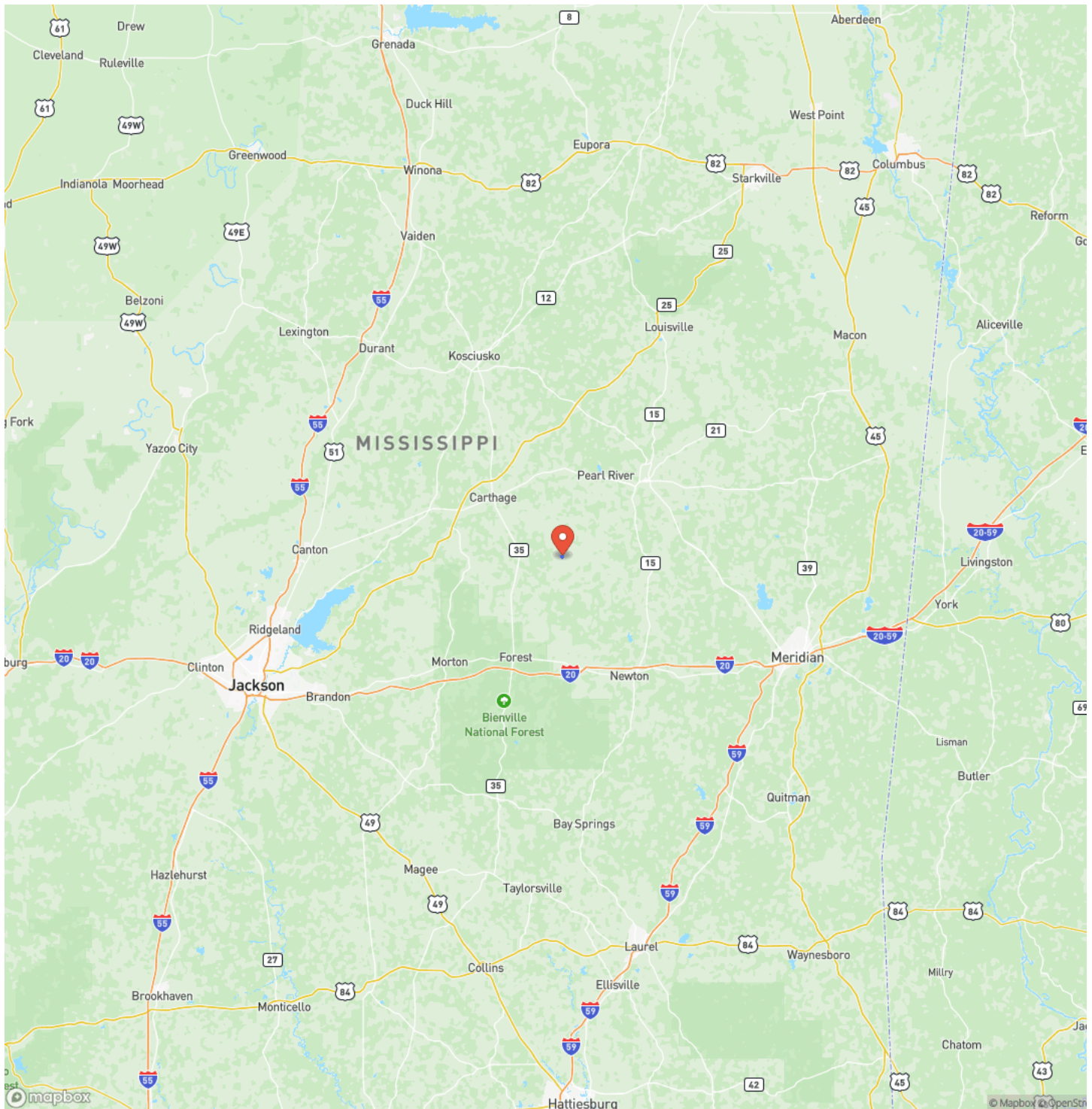


## Locator Map





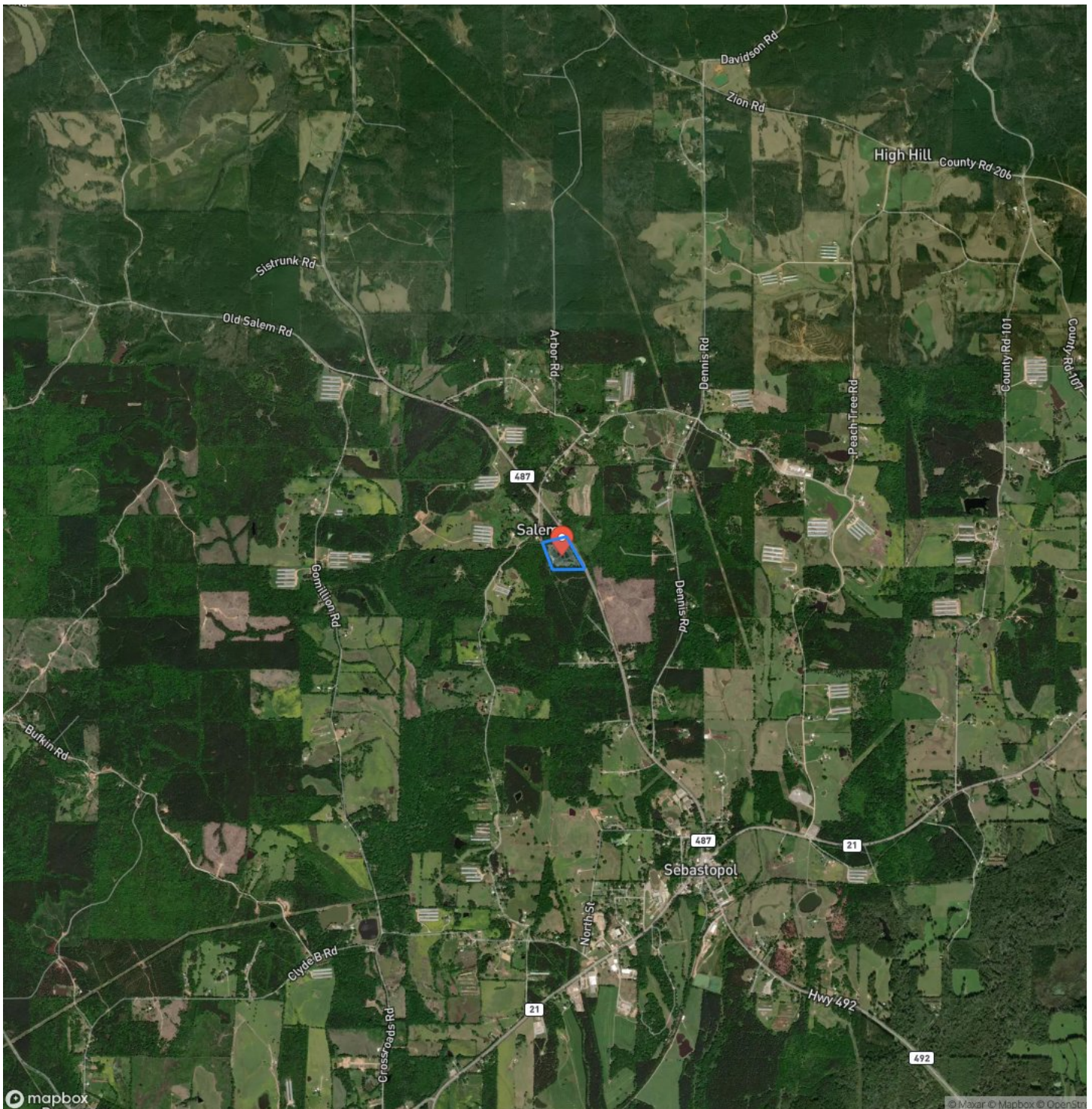
## Locator Map





**Home and Large Shops on 11.4 +/- acres Walnut Grove, MS  
Walnut Grove, MS / Leake County**

## Satellite Map



**MORE INFO ONLINE:**

**MossyOakProperties.com**

**Home and Large Shops on 11.4 +/- acres Walnut Grove, MS  
Walnut Grove, MS / Leake County**

## LISTING REPRESENTATIVE

**For more information contact:**



### Representative

Hunter McCool

## Mobile

(662) 295-7447

## Email

hmccool@mossyoakproperties.com

**Address**

128 W Franklin Street

## City / State / Zip

Carthage, MS 39051

## NOTES

[illegible]

**MORE INFO ONLINE:**

**MossyOakProperties.com**



## This image shows a blank sheet of white paper with horizontal ruling lines. The lines are evenly spaced and extend across the width of the page. There are no margins, text, or other markings on the paper.



## **DISCLAIMERS**

Information in this brochure is provided solely for information purposes and does not constitute an offer to sell or advertise real estate outside the states in which broker or agent licensed. The information presented has been obtained from sources deemed to be reliable, but is not guaranteed or warranted by the agent, broker, or the sellers of these properties. This offering is subject to errors, omissions, prior sale, price change, correction or withdrawal from the market without notice. All references to age, square footage, income, expenses, acreage, carrying capacity, and land classification, etc. are approximate. Prospective buyers are chargeable with and expected to conduct their own independent investigation of the information and the property and to rely only on those results. Sellers reserve the right to accept or reject any and all offers without liability to any buyer or cooperating broker.

Maps are provided for illustration purposes only, the accuracy is not warranted. Parcels on interactive maps are not adjusted to match aerial backgrounds. This information is for reference purposes only and is not a legal document. Data maps contain errors. The seller and seller's agent are making known to all potential buyers that there may be variations between the location of the existing fence lines and the legal description of the deeded property. Seller and seller's agent make no warranties with regard to the location of the fence lines in relationship to the deeded property lines, nor does the Seller make any warranties or representations with regard to the specific acreage contained within the fenced property lines. Seller is selling the property in an "as is" condition, which includes the location of the fences as they exist. Boundaries shown on the accompanying maps are approximate, based on county parcel data. The maps are not to scale. The accuracy of the maps is not guaranteed. Prospective buyers are encouraged to verify fence lines, deeded property lines and acreages using a licensed surveyor at their own expense.





---

**Mossy Oak Properties Bottomland Real Estate**

639 Commerce Street  
West Point, MS 39773  
(662) 495-1121  
[MossyOakProperties.com](http://MossyOakProperties.com)

---

