

13.88 +/- Acres Hwy 182 East  
Hwy 182 East  
Starkville, MS 39759

**\$277,600**  
13.88± Acres  
OkTibbeha County



**13.88 +/- Acres Hwy 182 East  
Starkville, MS / Oktibbeha County**

---

**SUMMARY**

**Address**

Hwy 182 East

**City, State Zip**

Starkville, MS 39759

**County**

Oktibbeha County

**Type**

Hunting Land, Farms, Recreational Land, Undeveloped Land

**Latitude / Longitude**

33.477158 / -88.722504

**Acreage**

13.88

**Price**

\$277,600

**Property Website**

<https://www.mossoakproperties.com/property/13-88-acres-hwy-182-east/oktibbeha/mississippi/103131/>



## 13.88 +/- Acres Hwy 182 East Starkville, MS / Oktibbeha County

---

### **PROPERTY DESCRIPTION**

13.88± Acres in Starkville, MS | Prime Development Opportunity in the Golden Triangle

Located in the heart of Mississippi's Golden Triangle, this 13.88± acre tract in Starkville, MS offers an outstanding opportunity for residential development, investment, or a private homesite. With its well-drained, flat terrain, this property is perfectly suited for building, minimizing site prep and maximizing usability.

Conveniently situated just 4 miles from Mississippi State University, 13 miles from West Point, MS, 18 miles from Columbus, MS, and 1/2 mile from the Mississippi State Golf Course this property provides privacy and accessibility. Its location makes it highly desirable for developers, investors, or anyone looking to build near one of the fastest-growing areas in Northeast Mississippi.

The land is primarily open pasture, complemented by scattered mature oak trees that provide natural beauty, shade, and character. Whether you're envisioning a residential development, mini farm, or estate property, this tract offers flexibility and strong potential.

With excellent topography, a sought-after location, and proximity to major employers, education, and amenities, this Starkville acreage is a rare find in today's market.

Key Features:

- 13.88± acres in Starkville, MS
- Located in the Golden Triangle region
- Flat, well-drained land ideal for development
- 4 miles to Mississippi State University
- 13 miles to West Point, MS
- 18 miles to Columbus, MS
- 1/2 mile to Mississippi State Golf Course
- Mostly pasture with mature oak trees
- Excellent homesite or investment property

Don't miss this opportunity to own land in one of Mississippi's most desirable and rapidly growing areas.

Hunter McCool

Certified Land Specialist

Central MS Managing Broker

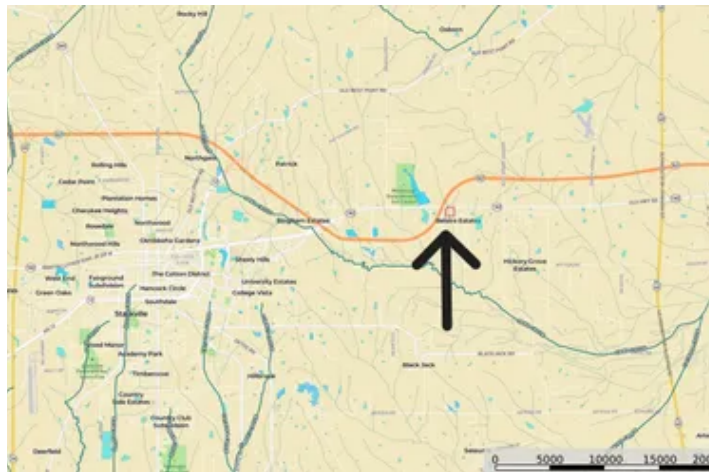
Office: [662-494-1121](tel:662-494-1121)

Cell: [662-295-7447](tel:662-295-7447)

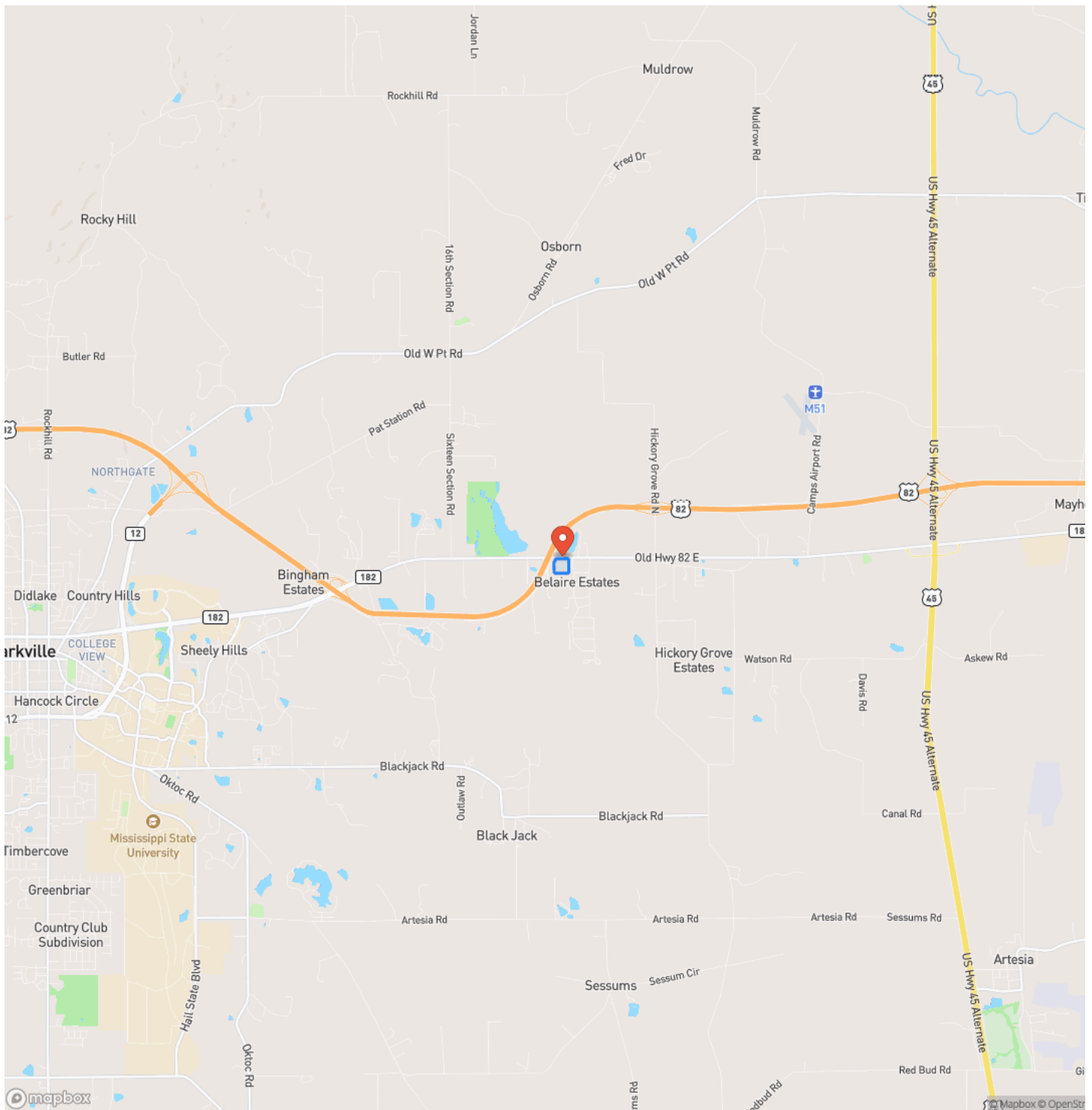
[hmccool@mossyoakproperties.com](mailto:hmccool@mossyoakproperties.com)



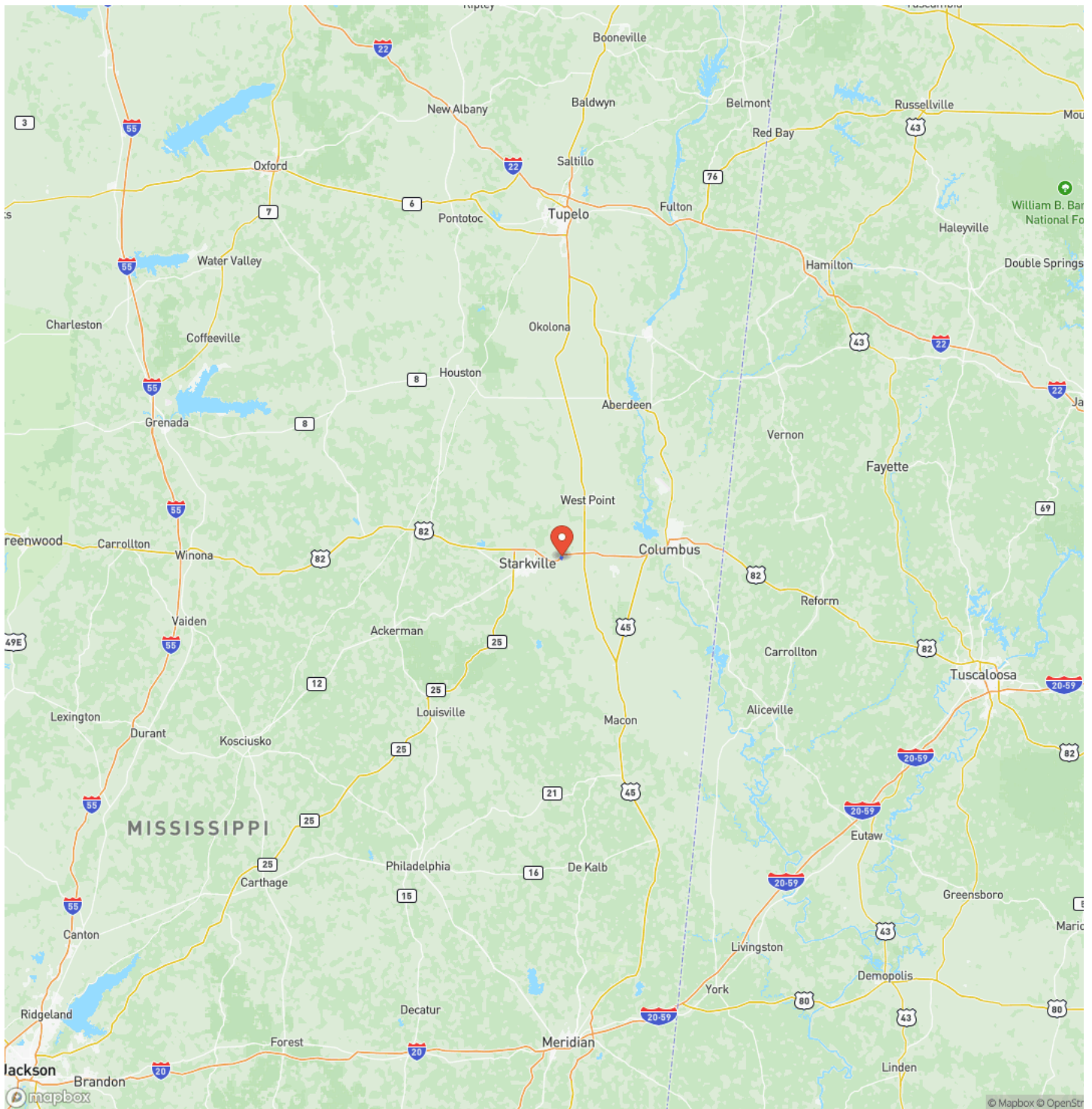
13.88 +/- Acres Hwy 182 East  
Starkville, MS / Oktibbeha County



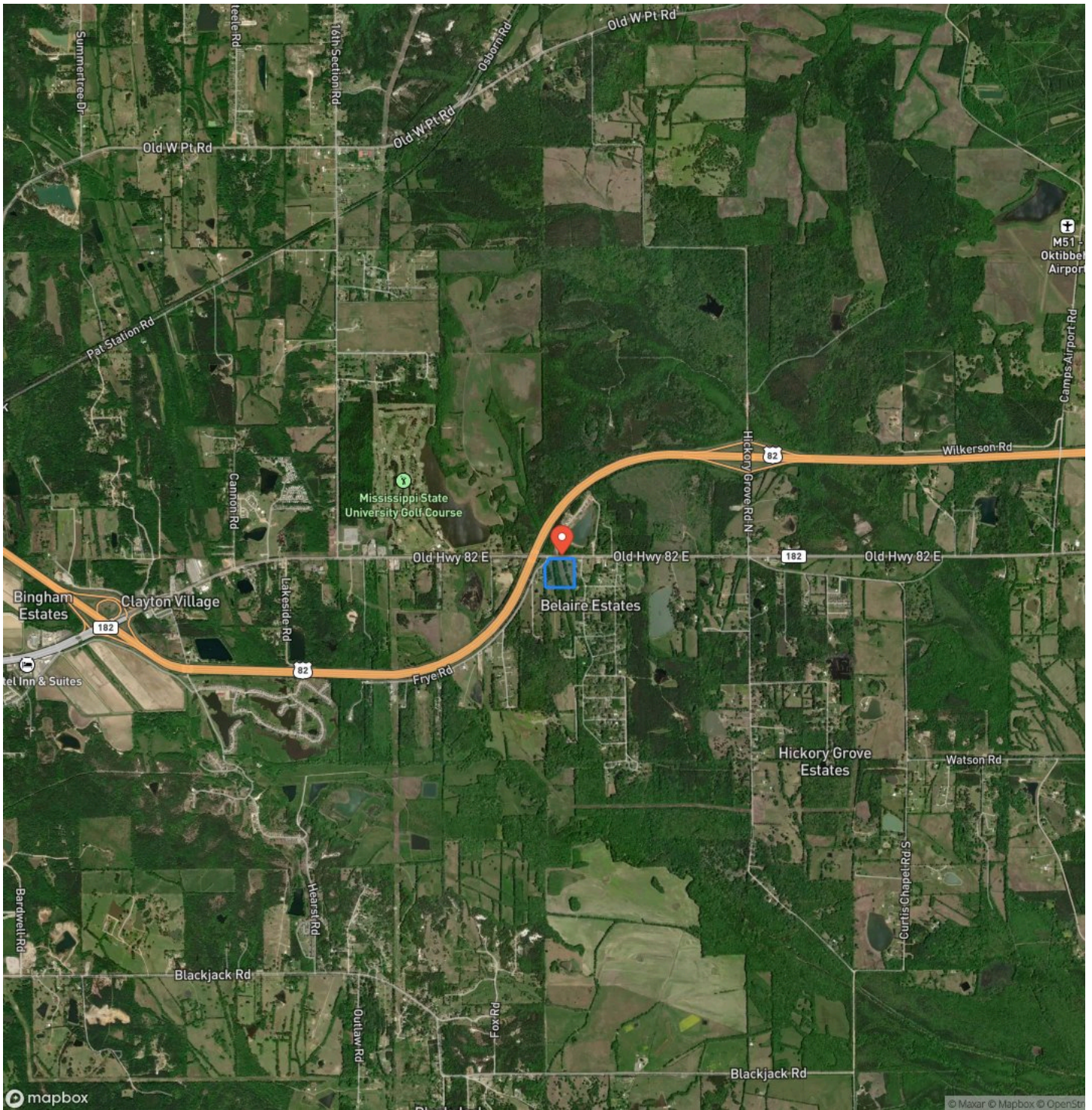
# Locator Map



## Locator Map



## Satellite Map







**DISCLAIMERS**

All boundaries and acreages are approximate and should be verified by the buyer.



---

**Mossy Oak Properties Bottomland Real Estate**

5795 Highway 45 Alt S

West Point, MS 39773

(662) 495-1121

<https://www.mossoakproperties.com/>

---

