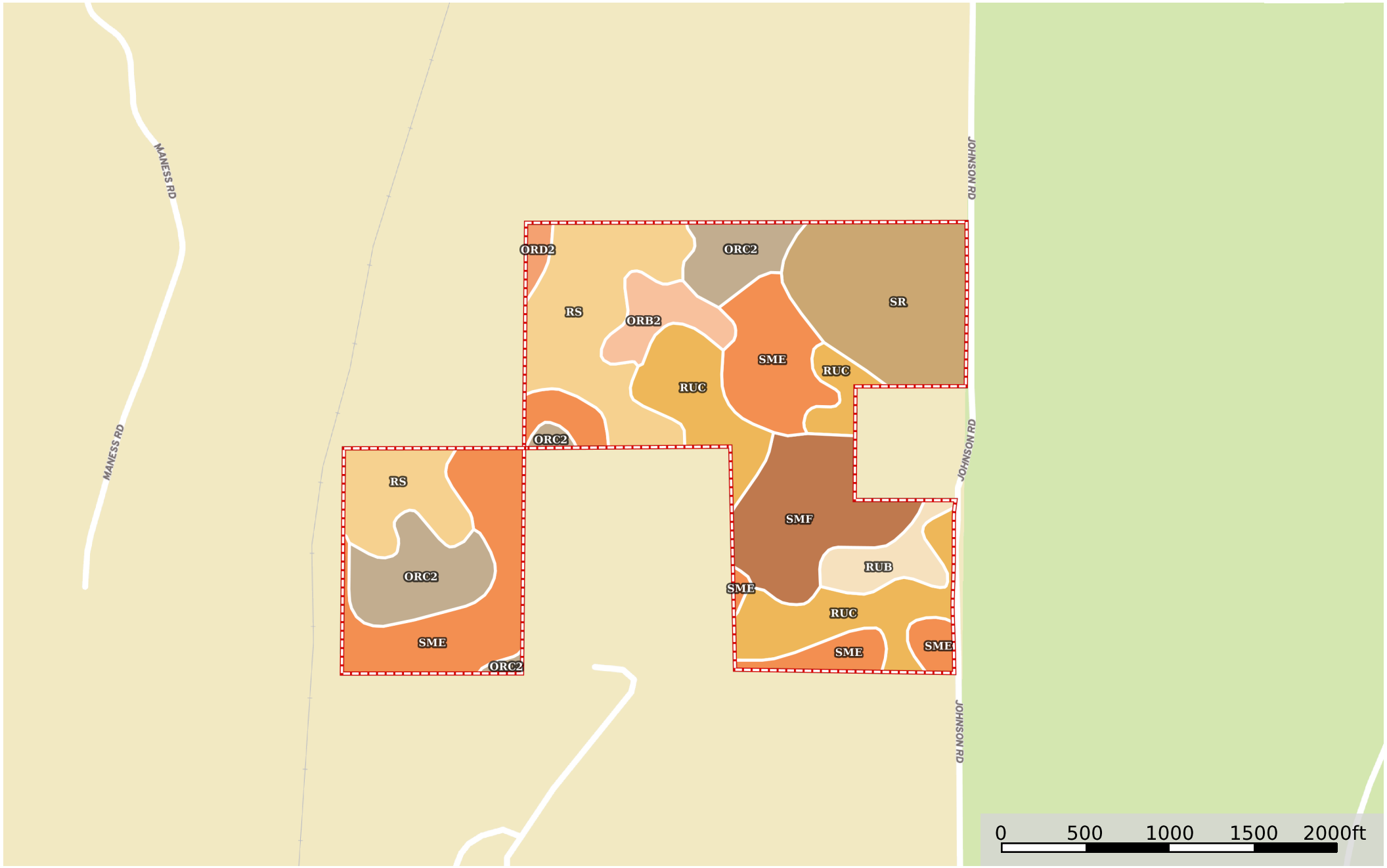


Triplett

Mississippi, AC +/-



Boundary

 All Polygons 144.19 ac

SOIL CODE	SOIL DESCRIPTION	ACRES	%	CPI	NCCPI	CAP
SmE	Smithdale fine sandy loam, 8 to 15 percent slopes	33.18	23.01	0	54	6e
Rs	Rosebloom silt loam, 0 to 2 percent slopes, frequently flooded	26.45	18.35	0	51	5w
RuC	Ruston fine sandy loam, 5 to 8 percent slopes	22.23	15.42	0	74	3e
SR	Smithdale-Ruston association, 5 to 40 percent slopes	20.65	14.32	0	52	7e
OrC2	Ora loam, 5 to 8 percent slopes, eroded	15.54	10.78	0	32	3e
SmF	Smithdale fine sandy loam, 15 to 35 percent slopes	15.1	10.47	0	11	7e
OrB2	Ora loam, 2 to 5 percent slopes, moderately eroded	5.01	3.47	0	37	2e
RuB	Ruston fine sandy loam, 2 to 5 percent slopes	4.82	3.34	0	72	2e
OrD2	Ora loam, 8 to 12 percent slopes, eroded	1.21	0.84	0	37	4e
TOTALS		144.19(*)	100%	-	49.24	4.99

(*) Total acres may differ in the second decimal compared to the sum of each acreage soil. This is due to a round error because we only show the acres of each soil with two decimal.

 Boundary 111.2 ac

SOIL CODE	SOIL DESCRIPTION	ACRES	%	CPI	NCCPI	CAP
RuC	Ruston fine sandy loam, 5 to 8 percent slopes	22.23	19.99	0	74	3e
SR	Smithdale-Ruston association, 5 to 40 percent slopes	20.65	18.57	0	52	7e
Rs	Rosebloom silt loam, 0 to 2 percent slopes, frequently flooded	17.98	16.17	0	51	5w
SmE	Smithdale fine sandy loam, 8 to 15 percent slopes	17.96	16.15	0	54	6e
SmF	Smithdale fine sandy loam, 15 to 35 percent slopes	15.1	13.58	0	11	7e
OrC2	Ora loam, 5 to 8 percent slopes, eroded	6.24	5.61	0	32	3e
OrB2	Ora loam, 2 to 5 percent slopes, moderately eroded	5.01	4.51	0	37	2e
RuB	Ruston fine sandy loam, 2 to 5 percent slopes	4.82	4.33	0	72	2e
OrD2	Ora loam, 8 to 12 percent slopes, eroded	1.21	1.09	0	37	4e
TOTALS		111.2(*)	100%	-	49.9	5.02

(*) Total acres may differ in the second decimal compared to the sum of each acreage soil. This is due to a round error because we only show the acres of each soil with two decimal.

 Boundary 32.99 ac

SOIL CODE	SOIL DESCRIPTION	ACRES	%	CPI	NCCPI	CAP
SmE	Smithdale fine sandy loam, 8 to 15 percent slopes	15.22	46.14	0	54	6e
OrC2	Ora loam, 5 to 8 percent slopes, eroded	9.3	28.19	0	32	3e
Rs	Rosebloom silt loam, 0 to 2 percent slopes, frequently flooded	8.47	25.67	0	51	5w
TOTALS		32.99(*)	100%	-	47.03	4.9









(*) Total acres may differ in the second decimal compared to the sum of each acreage soil. This is due to a round error because we only show the acres of each soil with two decimal.

Capability Legend

Increased Limitations and Hazards

Decreased Adaptability and Freedom of Choice Users

Land, Capability

								
	1	2	3	4	5	6	7	8
'Wild Life'	•	•	•	•	•	•	•	•
Forestry	•	•	•	•	•	•	•	
Limited	•	•	•	•	•	•	•	
Moderate	•	•	•	•	•	•		
Intense	•	•	•	•	•			
Limited	•	•	•	•				
Moderate	•	•	•					
Intense	•	•						
Very Intense	•							

Grazing Cultivation

(c) climatic limitations (e) susceptibility to erosion

(s) soil limitations within the rooting zone (w) excess of water