

Favi Package Store
1015 South Broadway
Shelby, MS 38774

\$250,000
0.07± Acres
Bolivar County



Favi Package Store
Shelby, MS / Bolivar County

SUMMARY

Address

1015 South Broadway null

City, State Zip

Shelby, MS 38774

County

Bolivar County

Type

Commercial

Latitude / Longitude

33.950299 / -90.767672

Acreage

0.07

Price

\$250,000

Property Website

<https://www.mossoakproperties.com/property/favi-package-store/bolivar/mississippi/106697/>



Favi Package Store Shelby, MS / Bolivar County

PROPERTY DESCRIPTION

Commercial Opportunity in Shelby, MS

Don't miss this unique opportunity to own a fully equipped commercial building in Shelby, Mississippi. Successfully operated as a liquor store for many years, this property is being offered with all existing fixtures, furniture, and equipment included, providing a setup for a package store or a variety of other retail business ventures.

Situated on approximately 0.07 acres, this property offers an excellent opportunity for entrepreneurs, investors, or business owners looking to establish or expand their presence in the Mississippi Delta.

Property Highlights

- Commercial building located in Shelby, MS
- Approximately 0.07± acres
- Formerly operated as a successful liquor/package store
- All fixtures, furniture, and equipment included in the sale
- Excellent opportunity for owner-operators or investors
- High potential for continued retail use or business redevelopment

Whether you're looking to open a package store, convenience retail operation, or another commercial venture, this property offers a ready-to-go foundation in an established location. Schedule your showing today and explore the possibilities.

Darrell Bullock, ARA, MAI, SRA

Managing Broker

Mossy Oak Properties, Bottomland Real Estate - The Delta

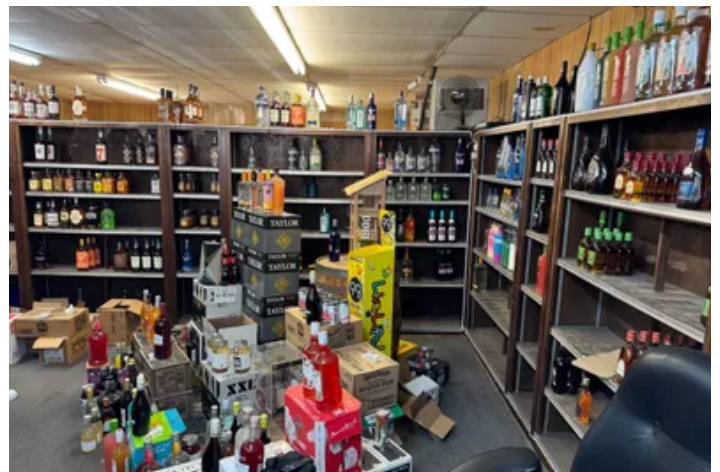
Cell [662 - 392 -3010](tel:662-392-3010)

Office [662 624 8282](tel:662-624-8282)

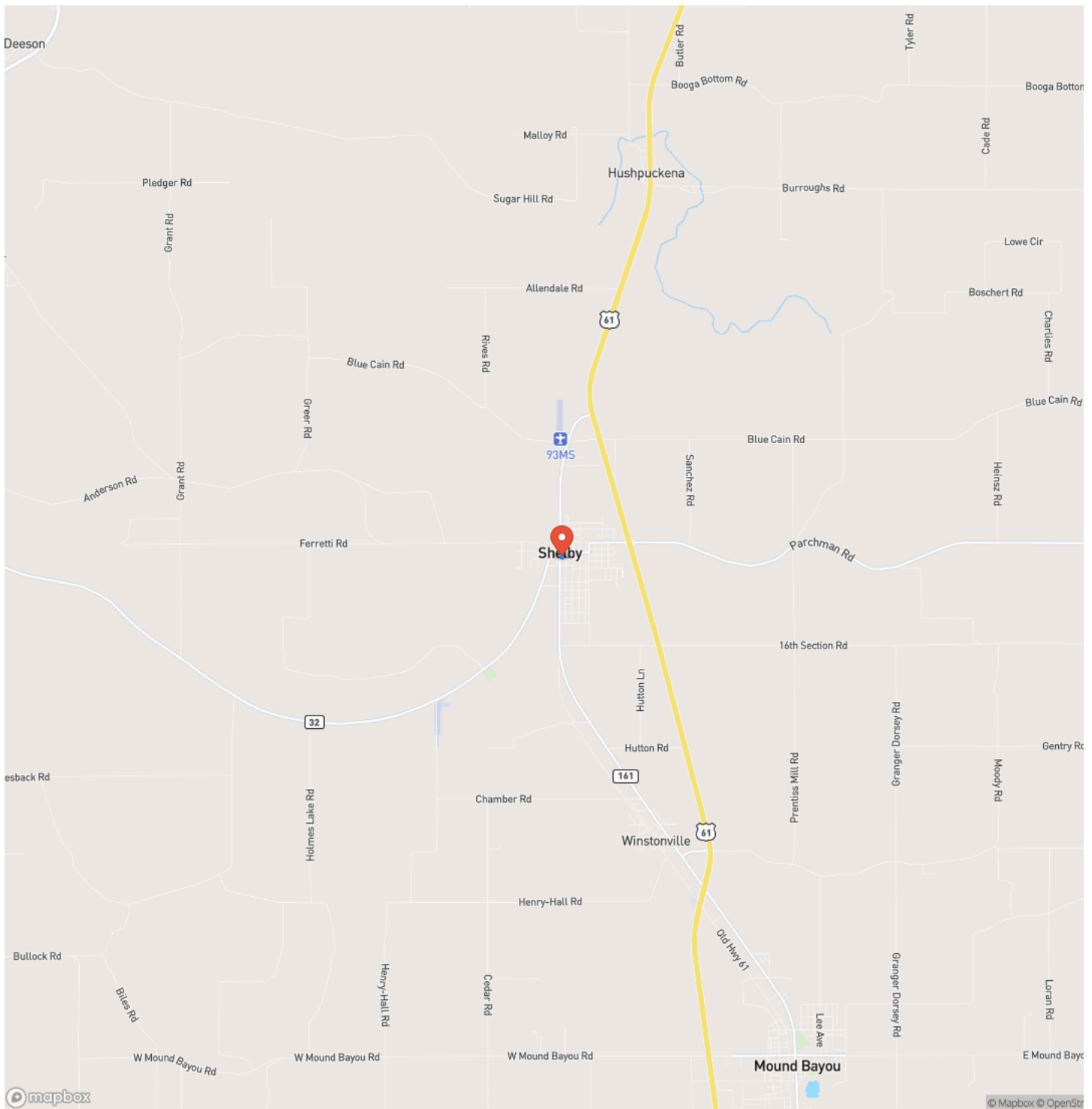
dbullock@mossyoakproperties.com



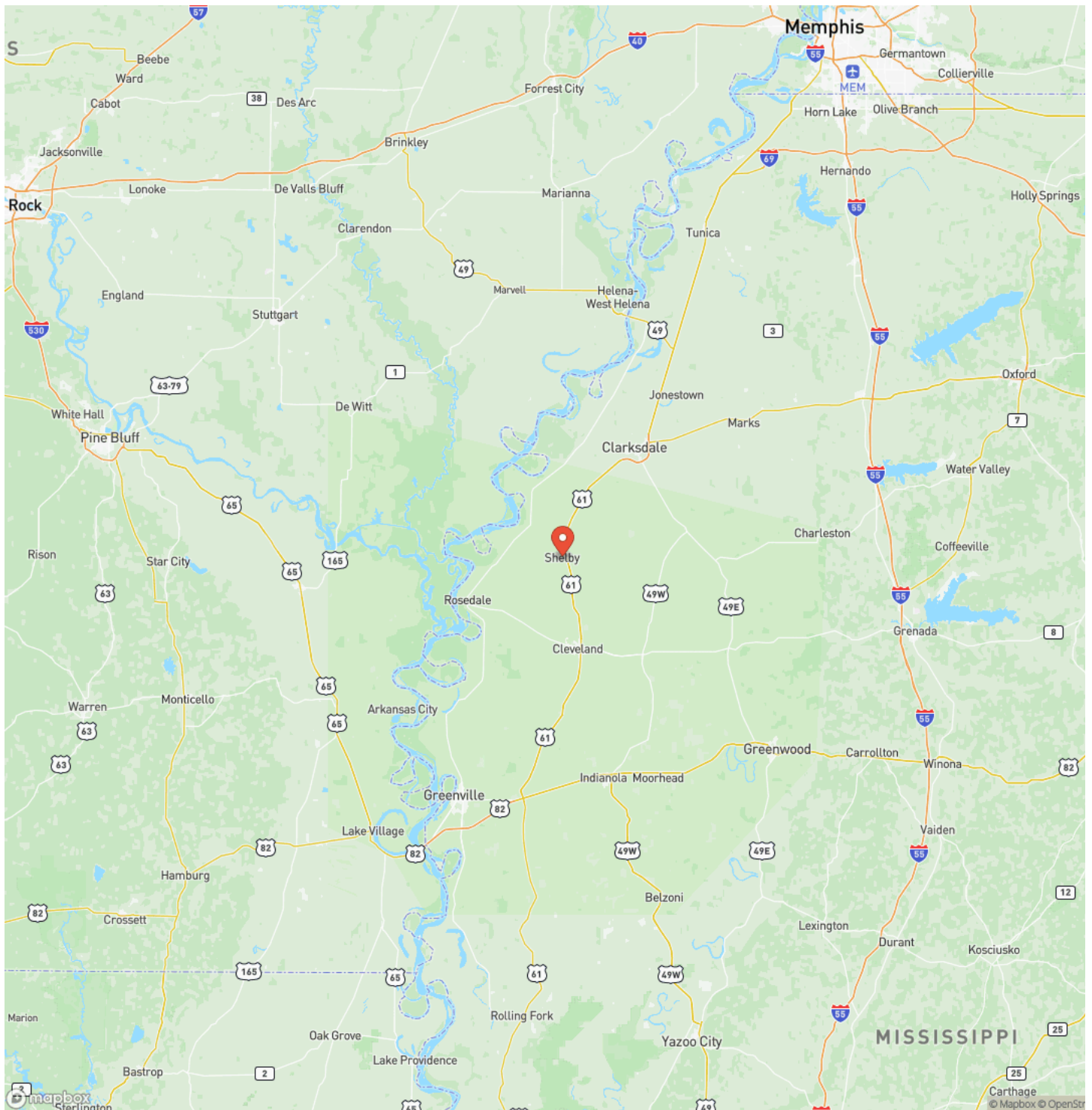
Favi Package Store
Shelby, MS / Bolivar County



Locator Map



Locator Map



Satellite Map



DISCLAIMERS

Information in this brochure is provided solely for information purposes and does not constitute an offer to sell or advertise real estate outside the states in which broker or agent licensed. The information presented has been obtained from sources deemed to be reliable, but is not guaranteed or warranted by the agent, broker, or the sellers of these properties. This offering is subject to errors, omissions, prior sale, price change, correction or withdrawal from the market without notice. All references to age, square footage, income, expenses, acreage, carrying capacity, and land classification, etc. are approximate. Prospective buyers are chargeable with and expected to conduct their own independent investigation of the information and the property and to rely only on those results. Sellers reserve the right to accept or reject any and all offers without liability to any buyer or cooperating broker.

Maps are provided for illustration purposes only, the accuracy is not warranted. Parcels on interactive maps are not adjusted to match aerial backgrounds. This information is for reference purposes only and is not a legal document. Data maps contain errors. The seller and seller's agent are making known to all potential buyers that there may be variations between the location of the existing fence lines and the legal description of the deeded property. Seller and seller's agent make no warranties with regard to the location of the fence lines in relationship to the deeded property lines, nor does the Seller make any warranties or representations with regard to the specific acreage contained within the fenced property lines. Seller is selling the property in an "as is" condition, which includes the location of the fences as they exist. Boundaries shown on the accompanying maps are approximate, based on county parcel data. The maps are not to scale. The accuracy of the maps is not guaranteed. Prospective buyers are encouraged to verify fence lines, deeded property lines and acreages using a licensed surveyor at their own expense.



Mossy Oak Properties Bottomland Real Estate

5795 Highway 45 Alt S

West Point, MS 39773

(662) 495-1121

<https://www.mossoakproperties.com/>

