

Dickson 719  
2422 country club  
Brinkley, AR 72021

**\$4,961,100**  
719± Acres  
Monroe County





**Dickson 719**  
**Brinkley, AR / Monroe County**

---

**PROPERTY DESCRIPTION**

719 acre Farm with 677 acres of Prime Farmland.

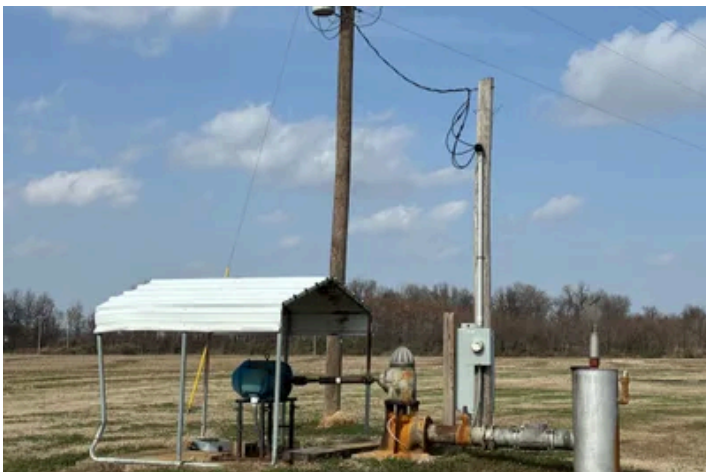
Located near the Brinkley city limits. All irrigated acres with 5 electric wells, 3 turbines, and a low lift pump in a tailwater recovery ditch. FSA reports attached.

The farm headquarters is made up of 88,000 bushels of Grain Storage,  
1 equipment shed, 2 metal shops, with a gravel parking lot.

Farm has been improved each year for the last 30 years to make it efficient and user friendly for the farmer. Underground irrigation pipe allows for numerous wells to pump out of several different locations. The Top soil has not been removed at any point allowing the farm to Grow 200 plus bushels of Rice and corn in the past.

if you are looking for a long term investment in Farmland, Look at this Farm!

Dickson 719  
Brinkley, AR / Monroe County



## Locator Map

---



## Locator Map

---



## Satellite Map

---







## **DISCLAIMERS**

Information in this brochure is provided solely for information purposes and does not constitute an offer to sell or advertise real estate outside the states in which broker or agent licensed. The information presented has been obtained from sources deemed to be reliable, but is not guaranteed or warranted by the agent, broker, or the sellers of these properties. This offering is subject to errors, omissions, prior sale, price change, correction or withdrawal from the market without notice. All references to age, square footage, income, expenses, acreage, carrying capacity, and land classification, etc. are approximate. Prospective buyers are chargeable with and expected to conduct their own independent investigation of the information and the property and to rely only on those results. Sellers reserve the right to accept or reject any and all offers without liability to any buyer or cooperating broker.

Maps are provided for illustration purposes only, the accuracy is not warranted. Parcels on interactive maps are not adjusted to match aerial backgrounds. This information is for reference purposes only and is not a legal document. Data maps contain errors. The seller and seller's agent are making known to all potential buyers that there may be variations between the location of the existing fence lines and the legal description of the deeded property. Seller and seller's agent make no warranties with regard to the location of the fence lines in relationship to the deeded property lines, nor does the Seller make any warranties or representations with regard to the specific acreage contained within the fenced property lines. Seller is selling the property in an "as is" condition, which includes the location of the fences as they exist. Boundaries shown on the accompanying maps are approximate, based on county parcel data. The maps are not to scale. The accuracy of the maps is not guaranteed. Prospective buyers are encouraged to verify fence lines, deeded property lines and acreages using a licensed surveyor at their own expense.



---

**Mossy Oak Properties Cache River Land & Farm**  
400 W Race Street  
Searcy, AR 72143  
(501) 278-5330  
<https://mossyoakproperties.com/>

---

