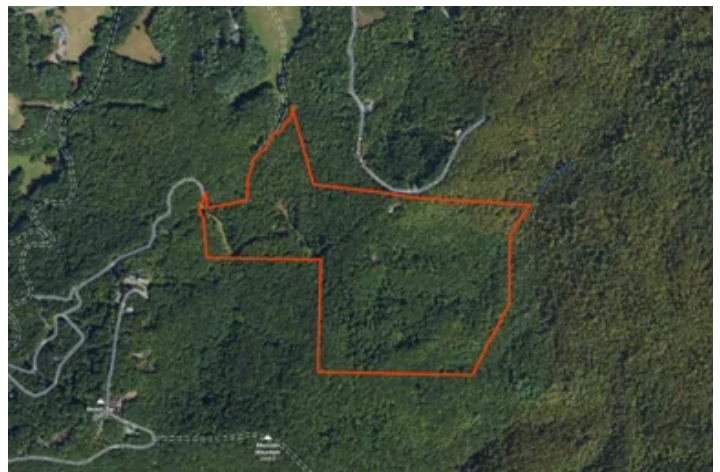
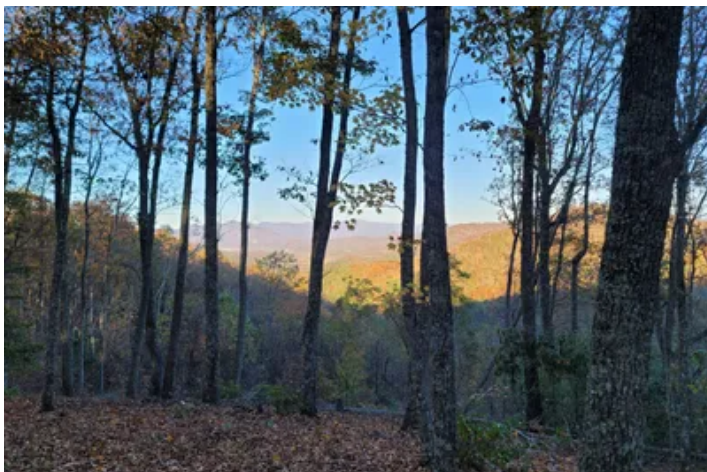
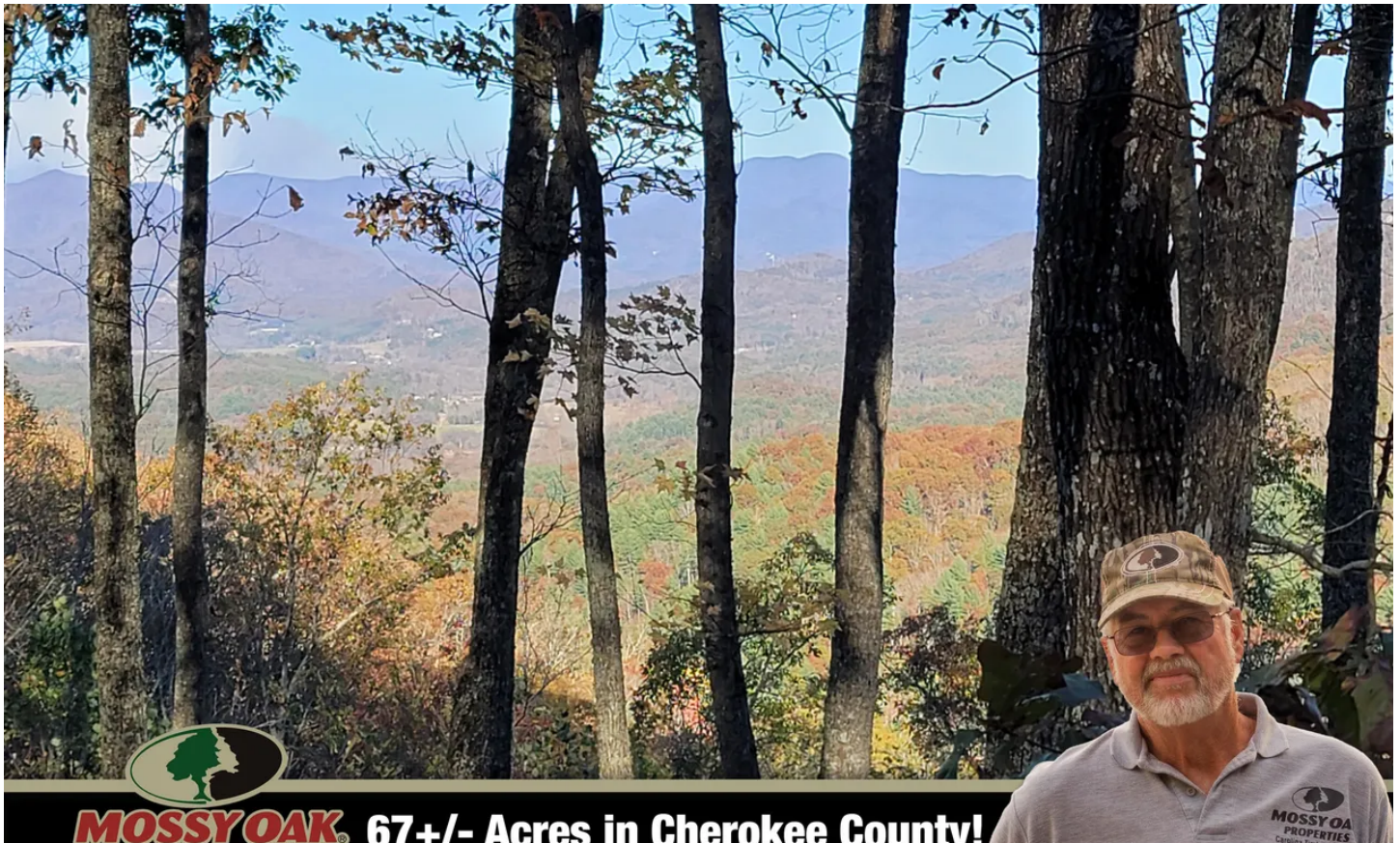


67.71+/- Unrestricted Acres, Views, Creek, Multiple  
Homesites  
300 Sequoyah Lane  
Murphy, NC 28906

**\$419,000**  
67.710± Acres  
Cherokee County





**67.71+/- Unrestricted Acres, Views, Creek, Multiple Homesites**  
**Murphy, NC / Cherokee County**

---

**SUMMARY**

**Address**

300 Sequoyah Lane

**City, State Zip**

Murphy, NC 28906

**County**

Cherokee County

**Type**

Hunting Land, Recreational Land

**Latitude / Longitude**

35.002806 / -84.019058

**HOA (Annually)**

360

**Dwelling Square Feet**

0

**Acreage**

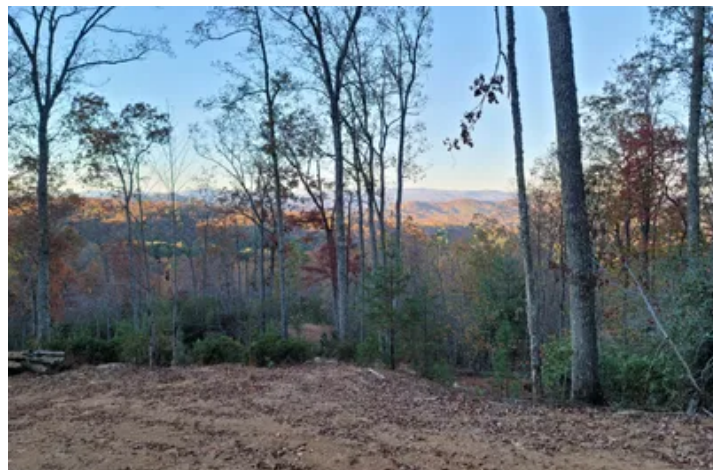
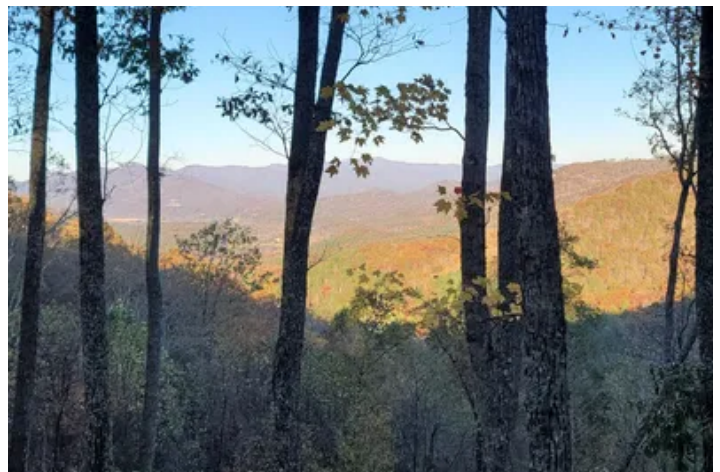
67.710

**Price**

\$419,000

**Property Website**

<https://www.mossyoakproperties.com/property/67-71-unrestricted-acres-views-creek-multiple-homesites-cherokee-north-carolina/51746/>



**67.71+/- Unrestricted Acres, Views, Creek, Multiple Homesites**  
**Murphy, NC / Cherokee County**

---

**PROPERTY DESCRIPTION**

67.71+/- Unrestricted Acres End of the road privacy awaits you with this tract with long range views from multiple homesites, small clearings for animals or gardening, and frontage on a mountain creek. If you are a developer, a hunter or just want to keep it all for your own, you are in business! Some roads and trails are roughed in, underground power is at entrance and water connection to shared well is possibly available. Owner Broker Dan Adams [828 361 5422](tel:8283615422)





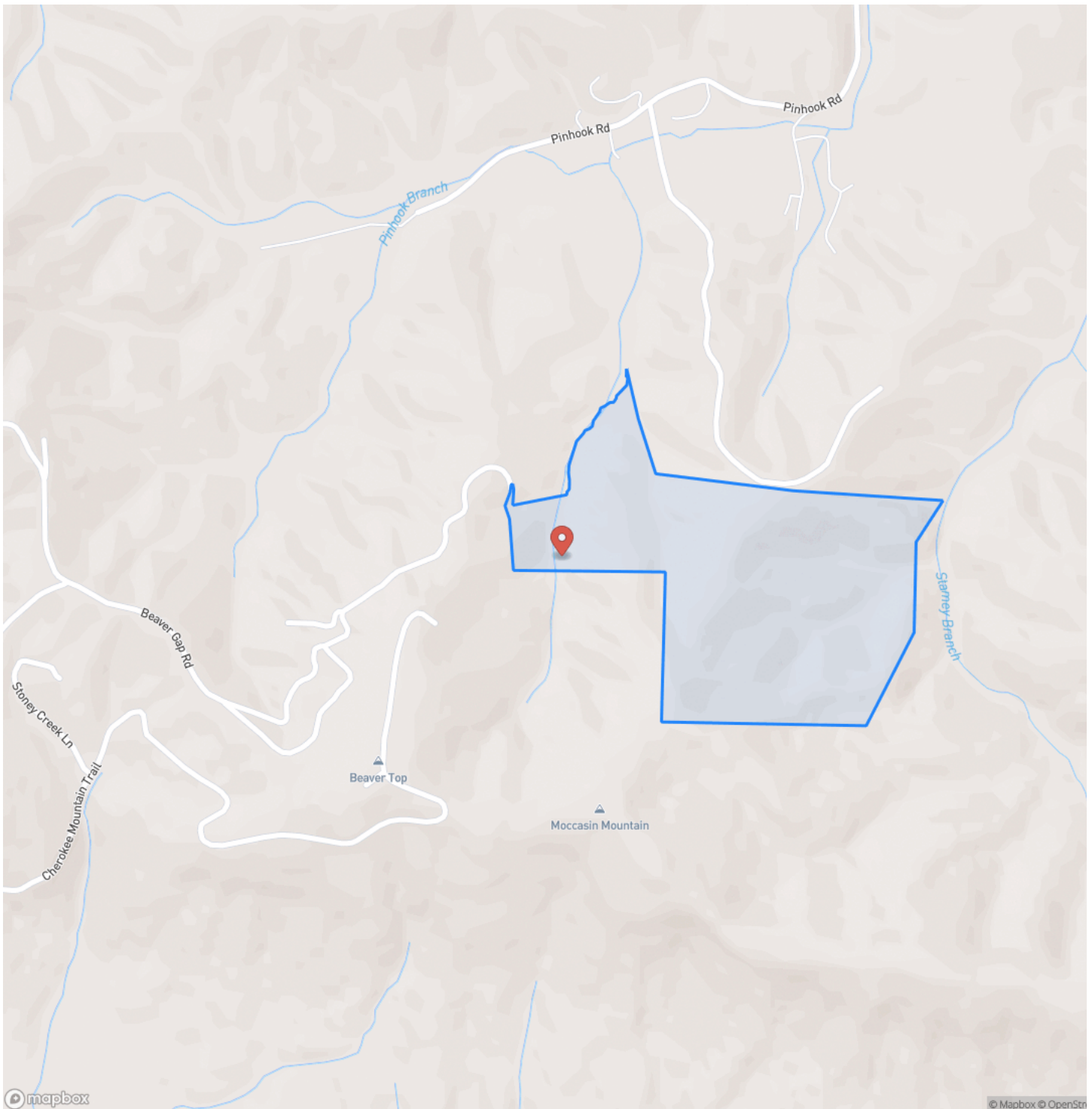
**67.71+/- Unrestricted Acres, Views, Creek, Multiple Homesites**  
**Murphy, NC / Cherokee County**

---



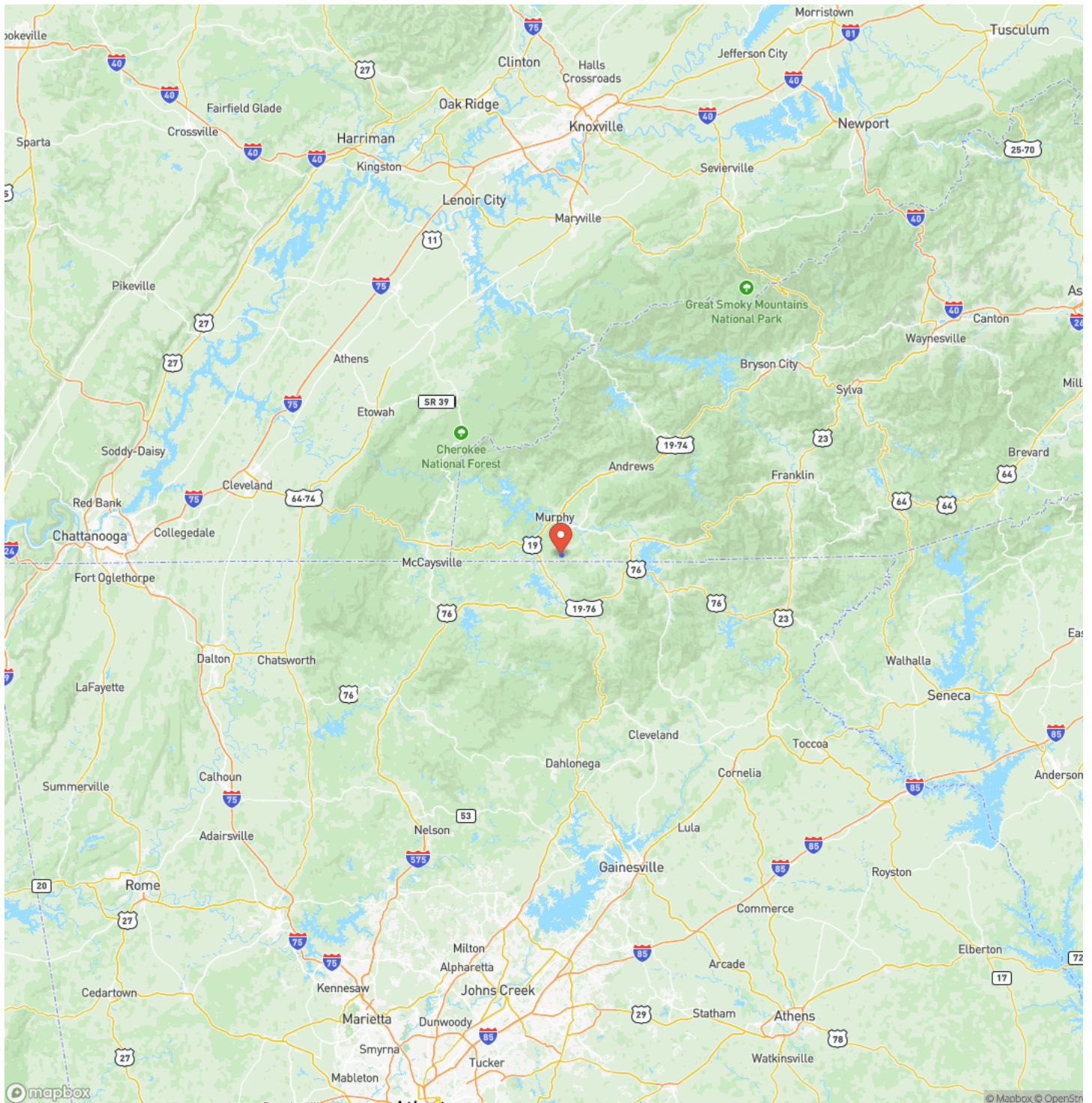


## Locator Map



**67.71+/- Unrestricted Acres, Views, Creek, Multiple Homesites  
Murphy, NC / Cherokee County**

## Locator Map



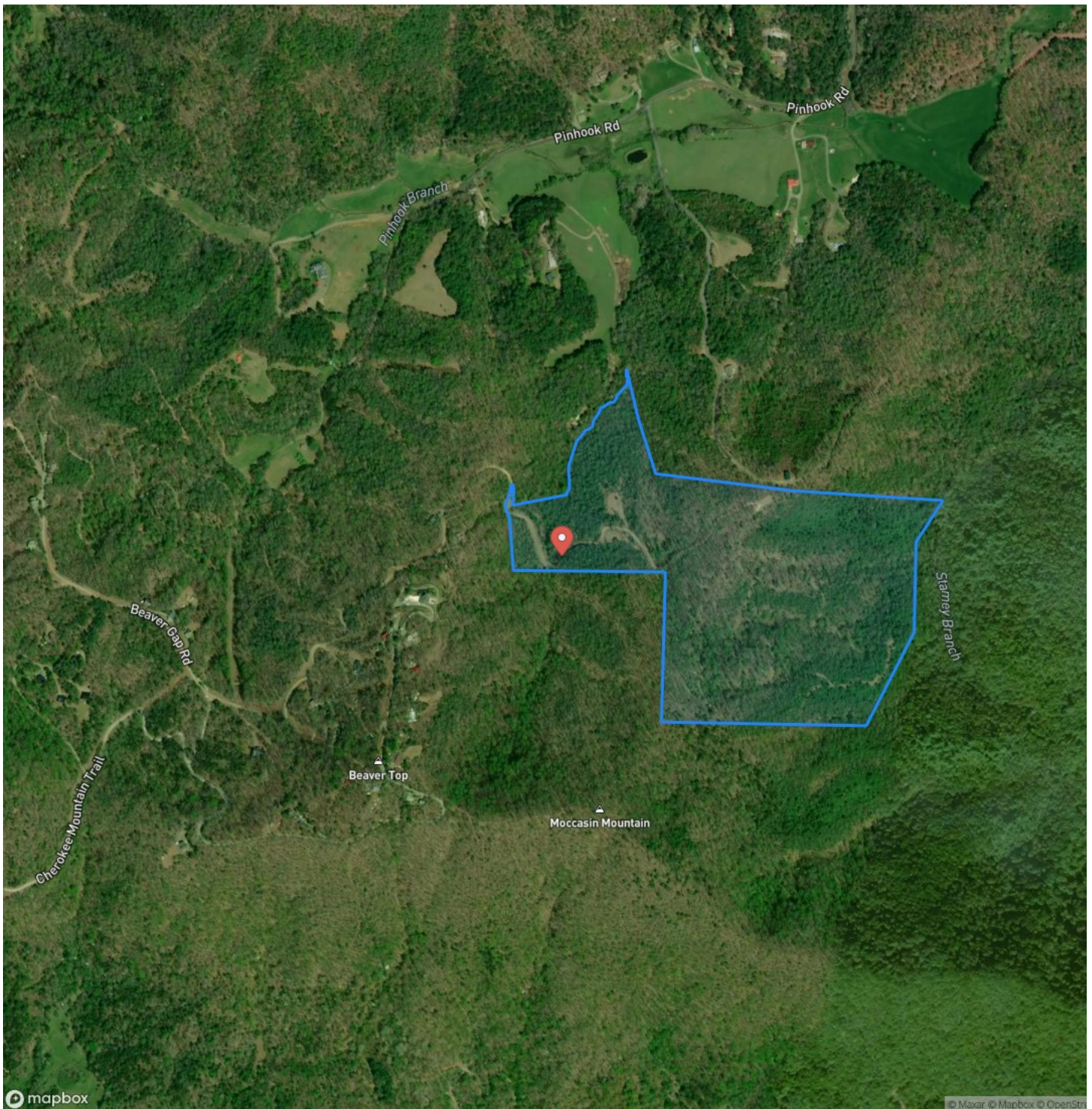
**MORE INFO ONLINE:**

**MossyOakProperties.com**



67.71+/- Unrestricted Acres, Views, Creek, Multiple Homesites  
Murphy, NC / Cherokee County

## Satellite Map



**67.71+/- Unrestricted Acres, Views, Creek, Multiple Homesites**  
**Murphy, NC / Cherokee County**

## LISTING REPRESENTATIVE

**For more information contact:**



### Representative

Dan Adams

## Mobile

(828) 361-5422

## Email

dan@mossyoakproperties.com

**Address**

## City / State / Zip

Murphy, NC 28906

## NOTES



**MORE INFO ONLINE:**

**MossyOakProperties.com**



## This image shows a blank sheet of white paper with horizontal ruling lines. The lines are evenly spaced and run across the width of the page. There are no margins, text, or other markings on the paper.



## **DISCLAIMERS**

Information in this brochure is provided solely for information purposes and does not constitute an offer to sell or advertise real estate outside the states in which broker or agent licensed. The information presented has been obtained from sources deemed to be reliable, but is not guaranteed or warranted by the agent, broker, or the sellers of these properties. This offering is subject to errors, omissions, prior sale, price change, correction or withdrawal from the market without notice. All references to age, square footage, income, expenses, acreage, carrying capacity, and land classification, etc. are approximate. Prospective buyers are chargeable with and expected to conduct their own independent investigation of the information and the property and to rely only on those results. Sellers reserve the right to accept or reject any and all offers without liability to any buyer or cooperating broker.

Maps are provided for illustration purposes only, the accuracy is not warranted. Parcels on interactive maps are not adjusted to match aerial backgrounds. This information is for reference purposes only and is not a legal document. Data maps contain errors. The seller and seller's agent are making known to all potential buyers that there may be variations between the location of the existing fence lines and the legal description of the deeded property. Seller and seller's agent make no warranties with regard to the location of the fence lines in relationship to the deeded property lines, nor does the Seller make any warranties or representations with regard to the specific acreage contained within the fenced property lines. Seller is selling the property in an "as is" condition, which includes the location of the fences as they exist. Boundaries shown on the accompanying maps are approximate, based on county parcel data. The maps are not to scale. The accuracy of the maps is not guaranteed. Prospective buyers are encouraged to verify fence lines, deeded property lines and acreages using a licensed surveyor at their own expense.





---

**Mossy Oak Properties Carolina Timber and Realty**

560 W Main Street

Sylva, NC 28779

(828) 477-4248

[MossyOakProperties.com](http://MossyOakProperties.com)

---



**MORE INFO ONLINE:**

**[MossyOakProperties.com](http://MossyOakProperties.com)**