

**Premium Commercial Office Space for Lease 1201
Shadowlawn Dr, Saint Marys, GA 31558
1201 Shadowlawn Dr
Saint Marys, GA 31558**

\$5,900
0.900± Acres
Camden County



Premium Commercial Office Space for Lease 1201 Shadowlawn Dr, Saint Marys, GA 31558
Saint Marys, GA / Camden County

SUMMARY

Address

1201 Shadowlawn Dr

City, State Zip

Saint Marys, GA 31558

County

Camden County

Type

Commercial

Latitude / Longitude

30.7523 / -81.5869

Acreage

0.900

Price

\$5,900

Property Website

<https://www.mossyoakproperties.com/property/premium-commercial-office-space-for-lease-1201-shadowlawn-dr-saint-marys-ga-31558-camden-georgia/15919/>



Premium Commercial Office Space for Lease 1201 Shadowlawn Dr, Saint Marys, GA 31558 Saint Marys, GA / Camden County

PROPERTY DESCRIPTION

Premium Commercial Office Space for Lease from an individual professional office, up to the entire 21 office -5,576 Sqft Building. Single basic offices start as low as \$175 per month, premium offices with bathrooms start at \$425 per month, with the entire building being available at \$5,900 per month. Terms are flexible and will be discussed on an individual basis. The property is located in St\ Marys, Camden County, GA and is minutes from Naval Submarine Base Kings Bay main gate. Easy access to Exit 1 and Exit 3 on I-95, the property is less than 25 minutes to the Jacksonville international Airport.

Rent includes:

1. High speed private internet access
2. Twice monthly common area cleaning
3. Access to conference and waiting rooms
4. Keyless entry system with individual PIN codes
5. Ample parking for customers front and rear
6. Exterior signage on building
7. Interior signage in waiting room
8. Private bath / shower in select offices
9. All utilities (electric, water, trash) & groundskeeping included
10. Break room
11. Outdoor gazebo
12. 24 hour security cameras
13. Audible alarm / entry
14. M - F 8am - 6pm heating/cooling
15. Individual office cleaning available for additional fee

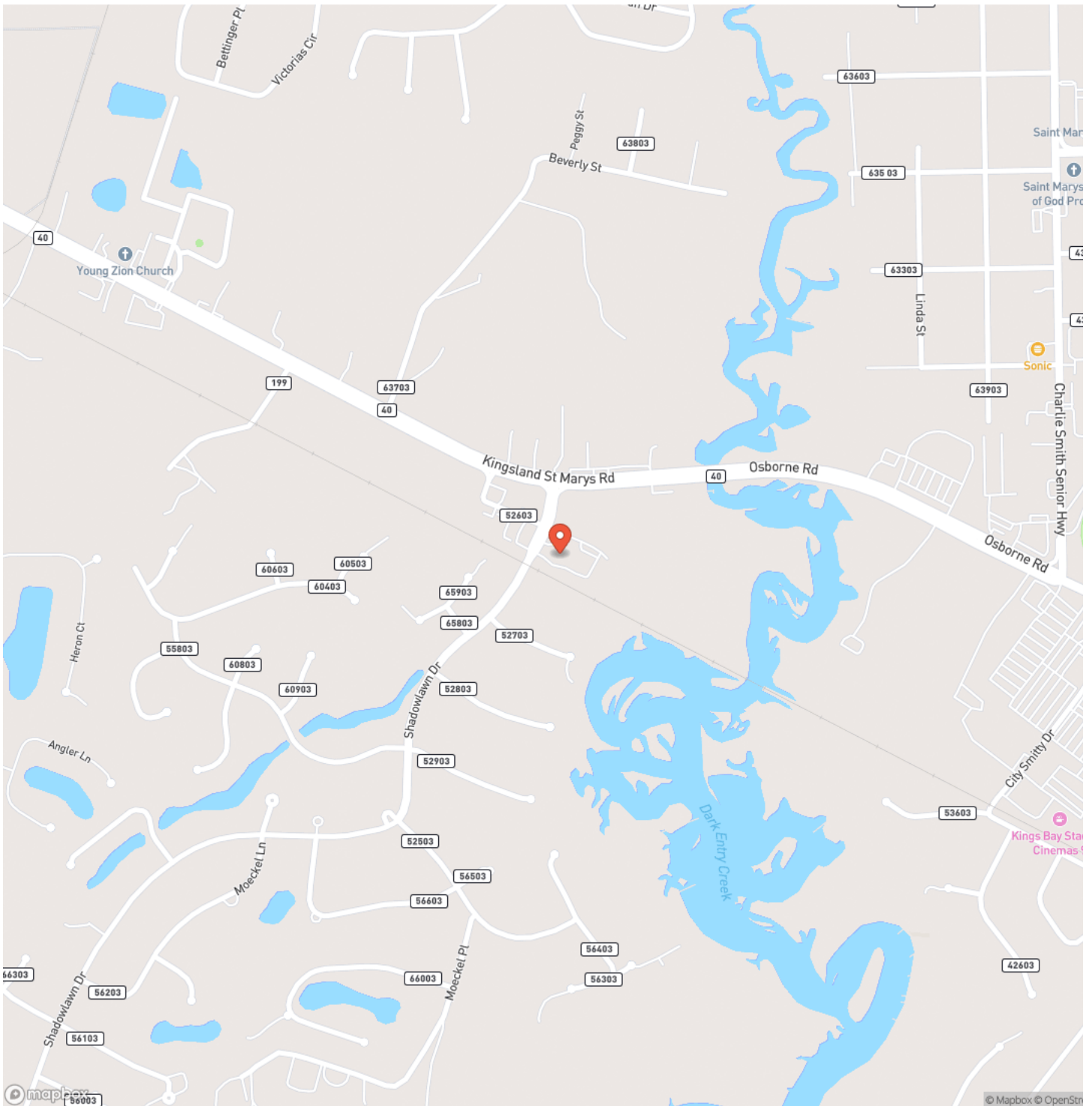
Contact Terrell Brazell with Mossy Oak Properties for more information at [912-674-2700](tel:912-674-2700)



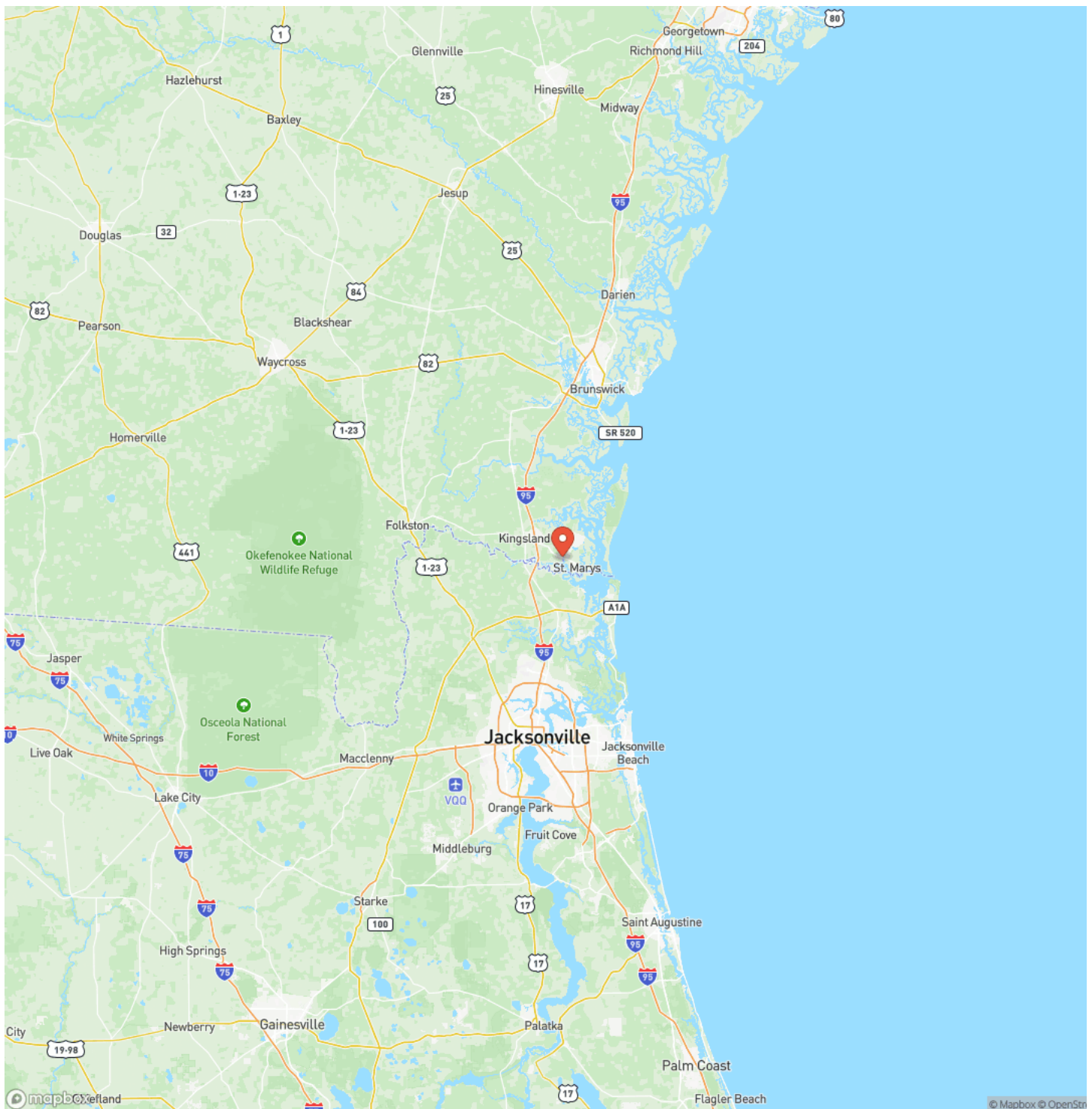
Premium Commercial Office Space for Lease 1201 Shadowlawn Dr, Saint Marys, GA 31558
Saint Marys, GA / Camden County



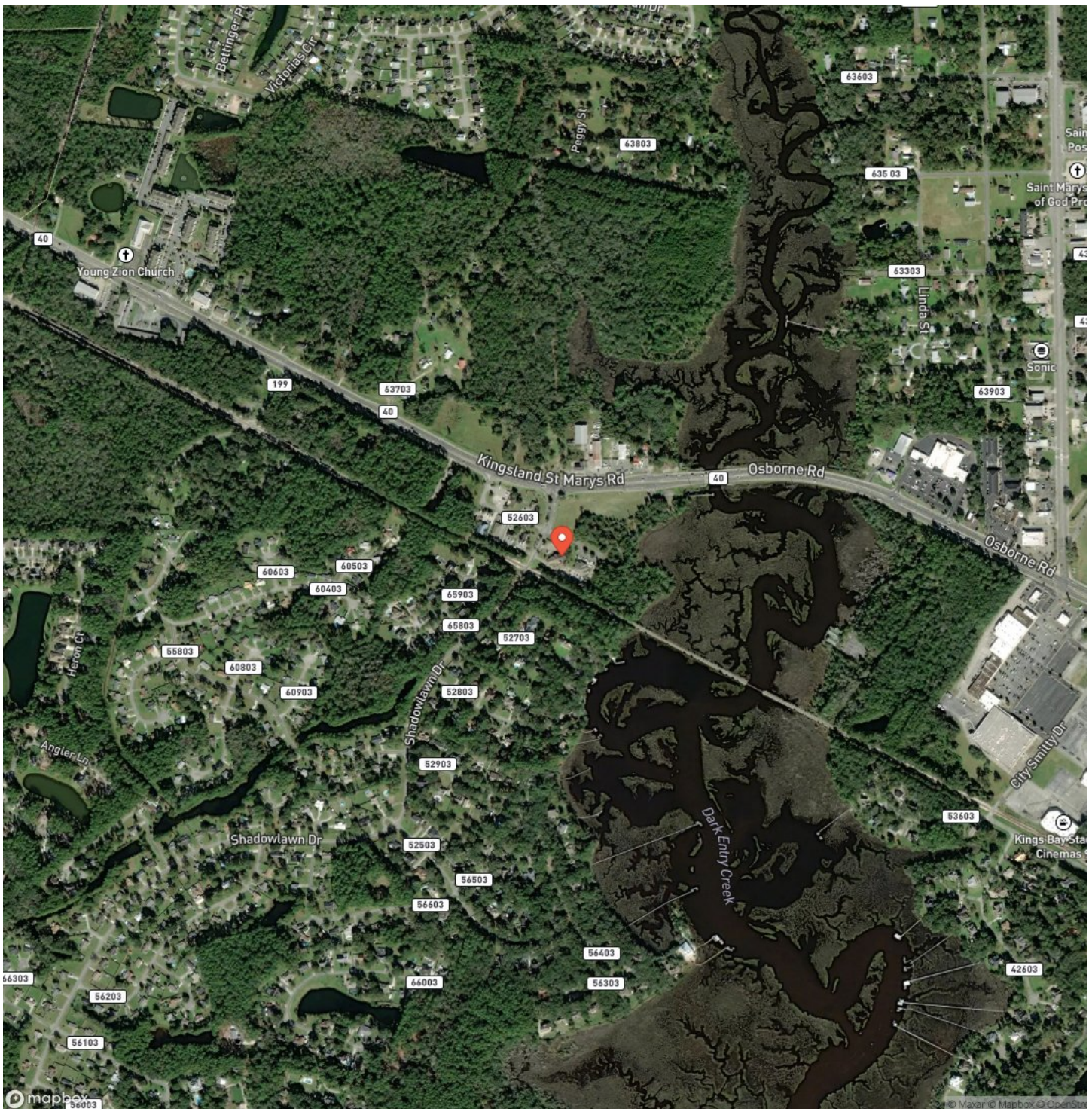
Locator Map



Locator Map



Satellite Map



[illegible]

DISCLAIMERS

Information in this brochure is provided solely for information purposes and does not constitute an offer to sell or advertise real estate outside the states in which broker or agent licensed. The information presented has been obtained from sources deemed to be reliable, but is not guaranteed or warranted by the agent, broker, or the sellers of these properties. This offering is subject to errors, omissions, prior sale, price change, correction or withdrawal from the market without notice. All references to age, square footage, income, expenses, acreage, carrying capacity, and land classification, etc. are approximate. Prospective buyers are chargeable with and expected to conduct their own independent investigation of the information and the property and to rely only on those results. Sellers reserve the right to accept or reject any and all offers without liability to any buyer or cooperating broker.

Maps are provided for illustration purposes only, the accuracy is not warranted. Parcels on interactive maps are not adjusted to match aerial backgrounds. This information is for reference purposes only and is not a legal document. Data maps contain errors. The seller and seller's agent are making known to all potential buyers that there may be variations between the location of the existing fence lines and the legal description of the deeded property. Seller and seller's agent make no warranties with regard to the location of the fence lines in relationship to the deeded property lines, nor does the Seller make any warranties or representations with regard to the specific acreage contained within the fenced property lines. Seller is selling the property in an "as is" condition, which includes the location of the fences as they exist. Boundaries shown on the accompanying maps are approximate, based on county parcel data. The maps are not to scale. The accuracy of the maps is not guaranteed. Prospective buyers are encouraged to verify fence lines, deeded property lines and acreages using a licensed surveyor at their own expense.



Mossy Oak Properties Coastal Land and Real Estate

309 Arnow Court
Saint Marys, GA 31558
(912) 674-2700
MossyOakProperties.com

