

25 AC- Kings Bay Road, St. Marys, Georgia
0 Laurel Island Parkway - Kings Bay Road
Saint Marys, GA 31558

\$130,000
25± Acres
Camden County



25 AC- Kings Bay Road, St. Marys, Georgia
Saint Marys, GA / Camden County

SUMMARY

Address

0 Laurel Island Parkway - Kings Bay Road

City, State Zip

Saint Marys, GA 31558

County

Camden County

Type

Recreational Land, Commercial

Latitude / Longitude

30.790927 / -81.592079

Acreage

25

Price

\$130,000

Property Website

<https://www.mossyoakproperties.com/property/25-ac-kings-bay-road-st-marys-georgia-camden-georgia/32606/>



25 AC- Kings Bay Road, St. Marys, Georgia
Saint Marys, GA / Camden County

PROPERTY DESCRIPTION

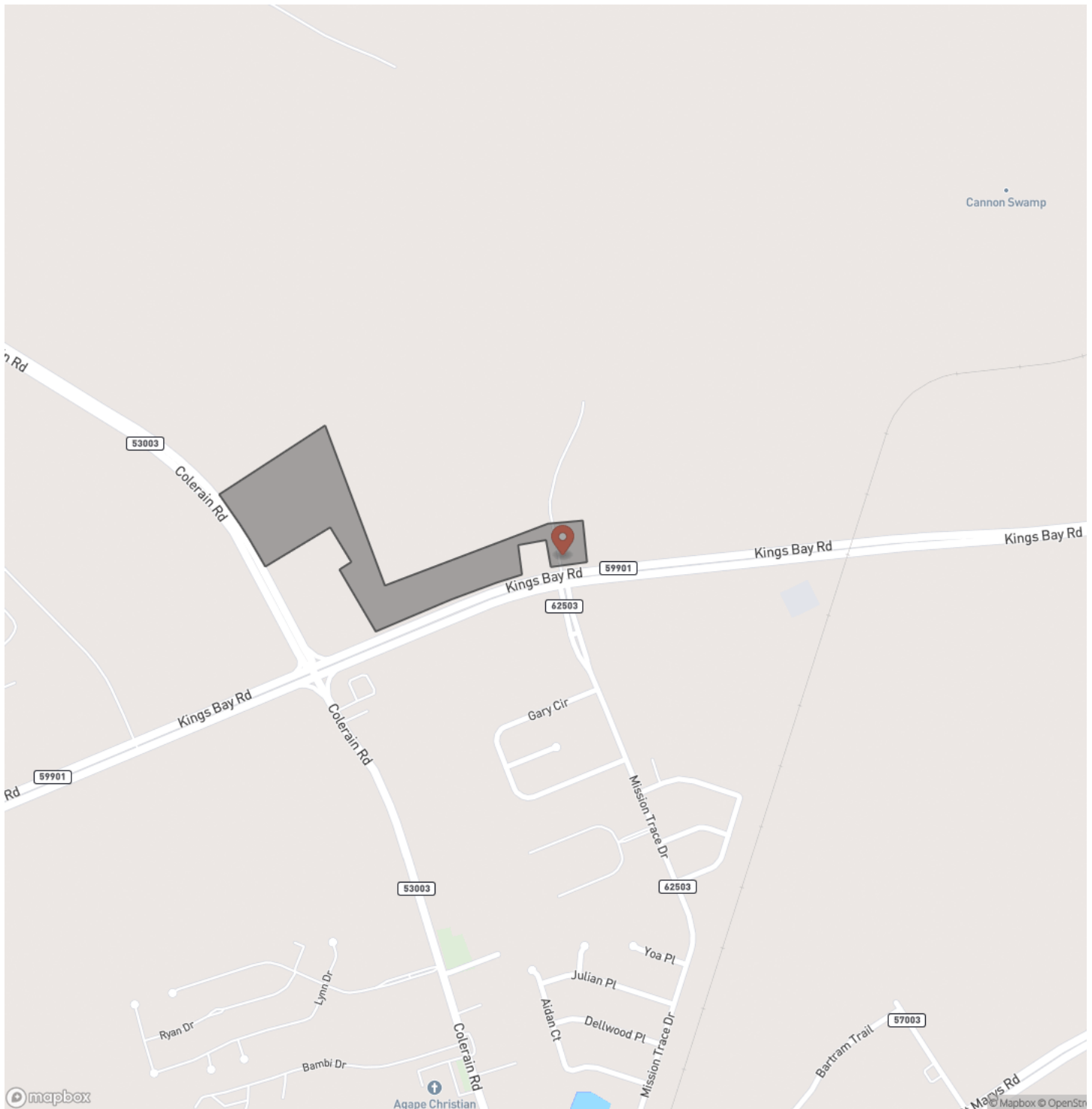
25+/- Acre C-2 Zoned Highway Commercial property with double paved road frontage on both Kings Bay Road and Laurel Island Parkway. City Water and Sewer available. Minutes away from Wal-Mart and other Shopping and Dining opportunities. Less than a mile from the main entrance to Kings Bay Naval Submarine Base. Located right in the middle of the newest commercial development in Camden County. This mixed use residential, commercial, development is located in St. Marys, GA 31558. Great Location and frontage make this property hard to beat. 30 Minutes to the Jacksonville International Airport and River City Mall. For more info or to schedule a showing, call or email Cody Morgan; [\(912\) 464-9914](tel:9124649914) or cmorgan@mossyoakproperties.com



25 AC- Kings Bay Road, St. Marys, Georgia
Saint Marys, GA / Camden County

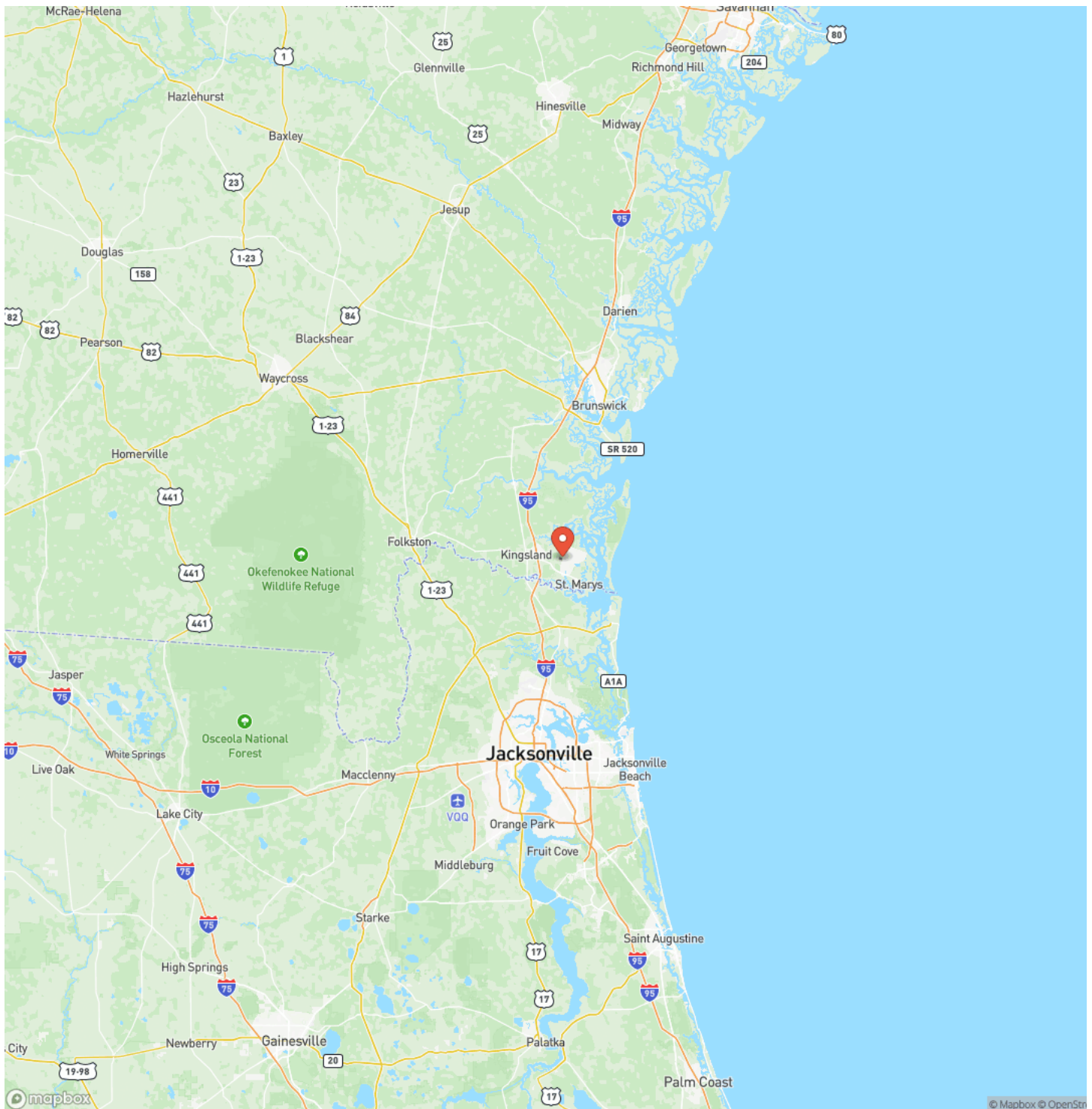


Locator Map



25 AC- Kings Bay Road, St. Marys, Georgia
Saint Marys, GA / Camden County

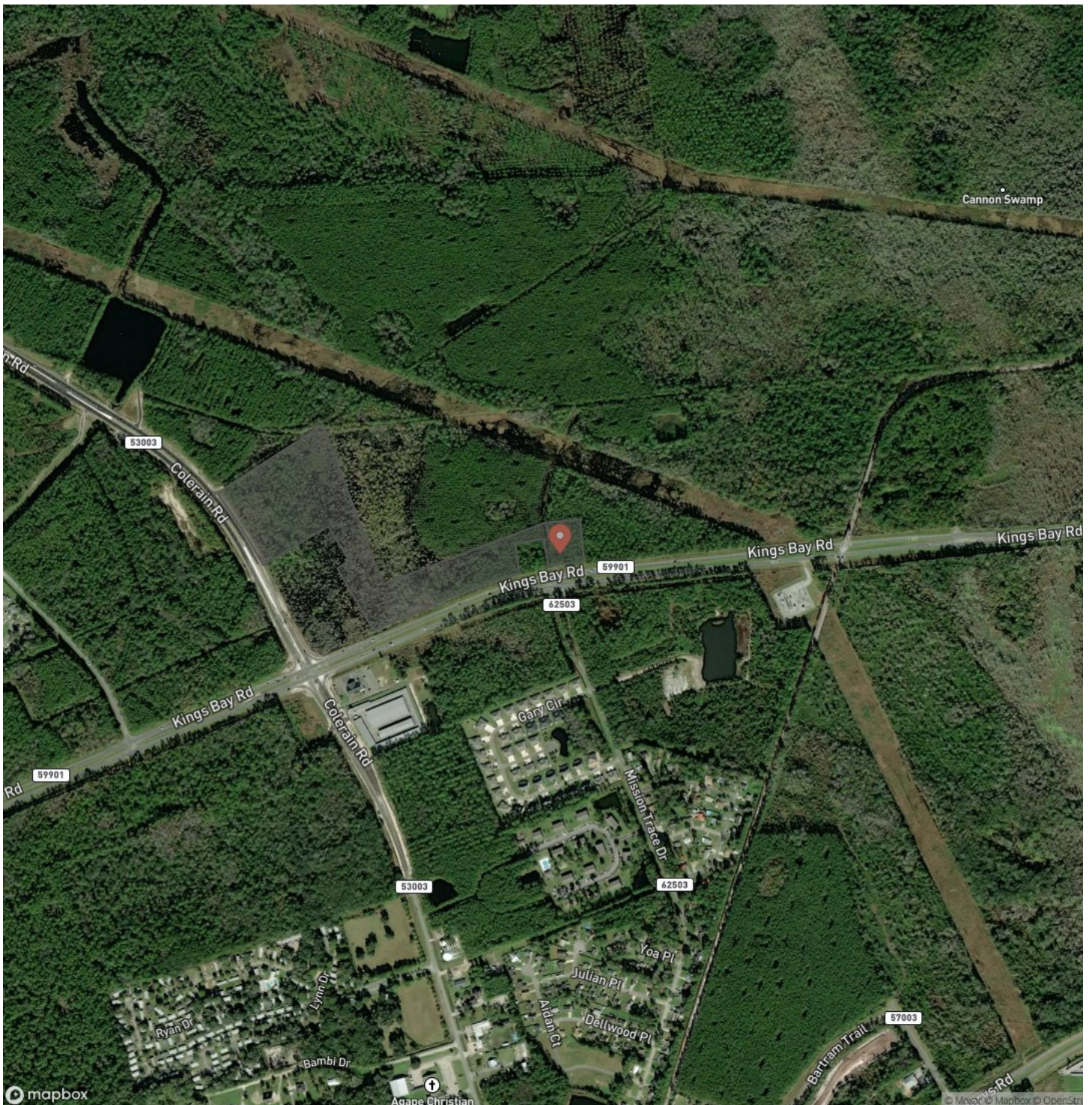
Locator Map



MORE INFO ONLINE:

MossyOakProperties.com

Satellite Map



25 AC- Kings Bay Road, St. Marys, Georgia
Saint Marys, GA / Camden County

LISTING REPRESENTATIVE

For more information contact:



Representative

Terrell Brazell

Mobile

(912) 674-2700

Email

tbrazell@mossyoakproperties.com

Address

309 Arnow Court

City / State / Zip

Saint Marys, GA 31558

NOTES



MORE INFO ONLINE:

MossyOakProperties.com

[illegible]

DISCLAIMERS

Information in this brochure is provided solely for information purposes and does not constitute an offer to sell or advertise real estate outside the states in which broker or agent licensed. The information presented has been obtained from sources deemed to be reliable, is not guaranteed or warranted by the agent, broker, or the sellers of these properties. This offering is subject to errors, omissions, prior sale, price change, correction or withdrawal from the market without notice. All references to age, square footage, income, expenses, acreage, carrying capacity, and land classification, etc. are approximate. Prospective buyers are chargeable with and expected to conduct their own independent investigation of the information and the property and to rely only on those results. Sellers reserve the right to accept or reject any and all offers without liability to any buyer or cooperating broker.

Maps are provided for illustration purposes only, the accuracy is not warranted. Parcels on interactive maps are not adjusted to match aerial backgrounds. This information is for reference purposes only and is not a legal document. Data maps contain errors. The seller and seller's agent are making known to all potential buyers that there may be variations between the location of the existing fence lines and the legal description of the deeded property. Seller and seller's agent make no warranties with regard to the location of the fence lines in relation to the deeded property lines, nor does the Seller make any warranties or representations with regard to the specific acreage contained within the fenced property lines. Seller is selling the property in an "as is" condition, which includes the location of the fences as they exist. Boundaries shown on the accompanying maps are approximate, based on county parcel data. The maps are not to scale. The accuracy of the maps is not guaranteed. Prospective buyers are encouraged to verify fence lines, deeded property lines and acreages using a licensed surveyor at their own expense.



Mossy Oak Properties Coastal Land and Real Estate

309 Arnow Court
Saint Marys, GA 31558
(912) 674-2700
MossyOakProperties.com

