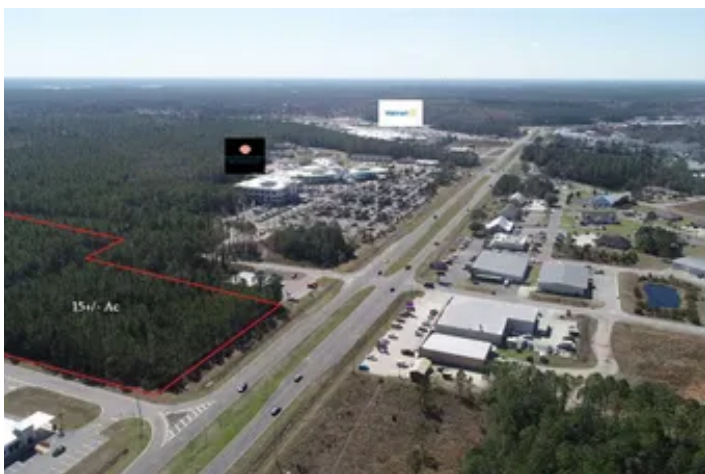


**15 Acre Commercial - Development Tract on Kings Bay
Rd in Camden County, GA**
15 Ac Kings Bay Road
Saint Marys, GA 31558

\$1,950,000
15± Acres
Camden County



15 Acre Commercial - Development Tract on Kings Bay Rd in Camden County, GA
Saint Marys, GA / Camden County

SUMMARY

Address

15 Ac Kings Bay Road

City, State Zip

Saint Marys, GA 31558

County

Camden County

Type

Commercial, Lot

Latitude / Longitude

30.7831 / -81.6114

Dwelling Square Feet

0

Acreage

15

Price

\$1,950,000

Property Website

<https://www.mossyoakproperties.com/property/15-acre-commercial-development-tract-on-kings-bay-rd-in-camden-county-ga-camden-georgia/18136/>



15 Acre Commercial - Development Tract on Kings Bay Rd in Camden County, GA Saint Marys, GA / Camden County

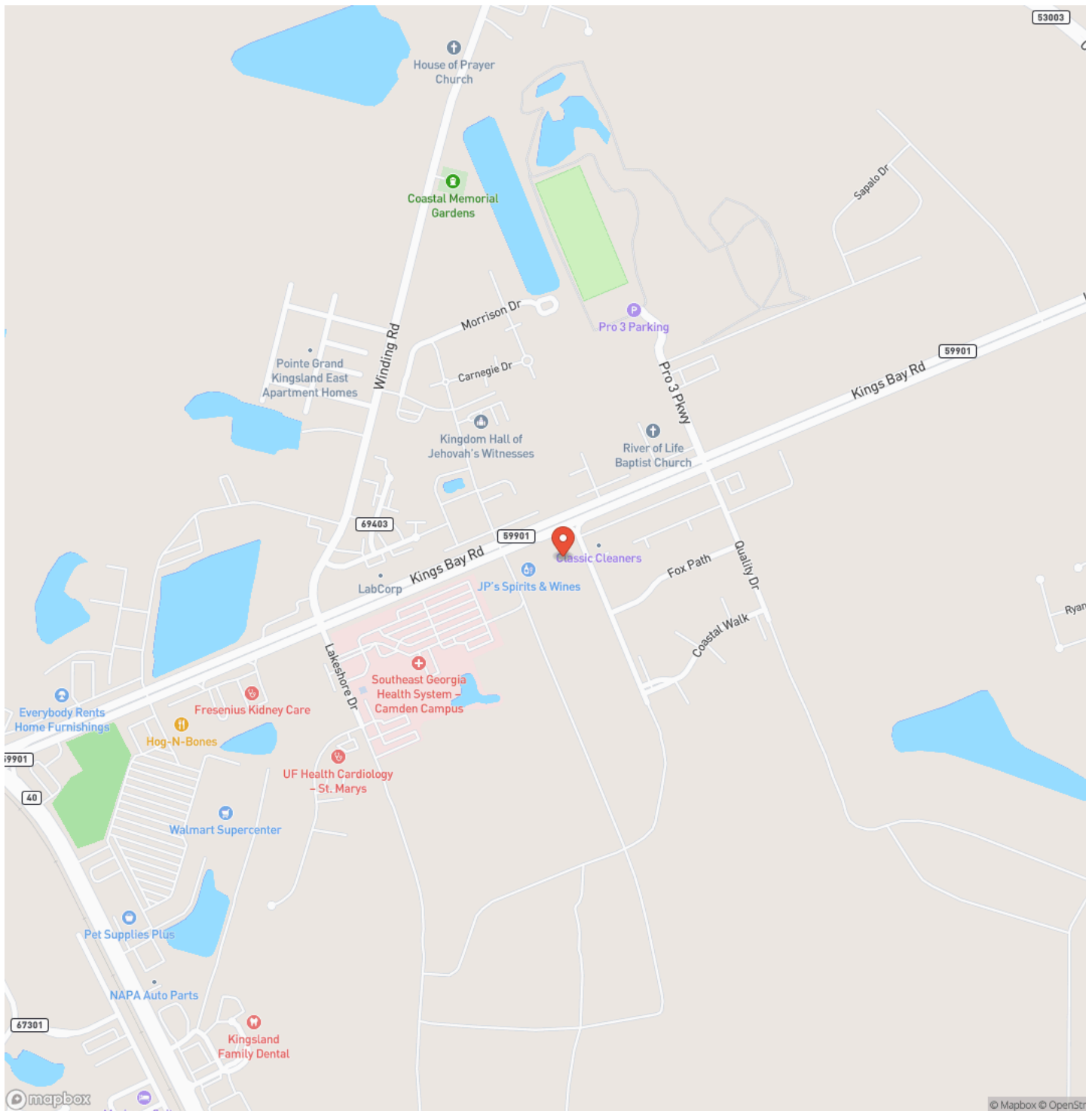
PROPERTY DESCRIPTION

15+/- Acres Commercial-Residential Development Tract with direct frontage on Kings Bay Road adjacent to the Southeast Georgia Regional Medical Center. Perfect location for an Assisted Living Center, Apartment Complex, Commercial Retail and Residential Development. Double paved road frontage on both Kings Bay Road and Barrier Island Way. City Water and Sewer available. Minutes way from Wal-Mart and other Shopping and Dining opportunities. Just over a mile from the main entrance to Kings Bay Naval Submarine Base. Located right in the middle of the newest commercial development in Camden County. This mixed use residential, commercial, development is located in St. Marys, GA 31558. Great Location and frontage make this property hard to beat. 30 Minutes to the Jacksonville International Airport and River City Mall. Contact Terrell Brazell with Mossy Oak Properties for more information on this property or others like it at [912-6784-2700](tel:912-6784-2700) or [Email listed above]

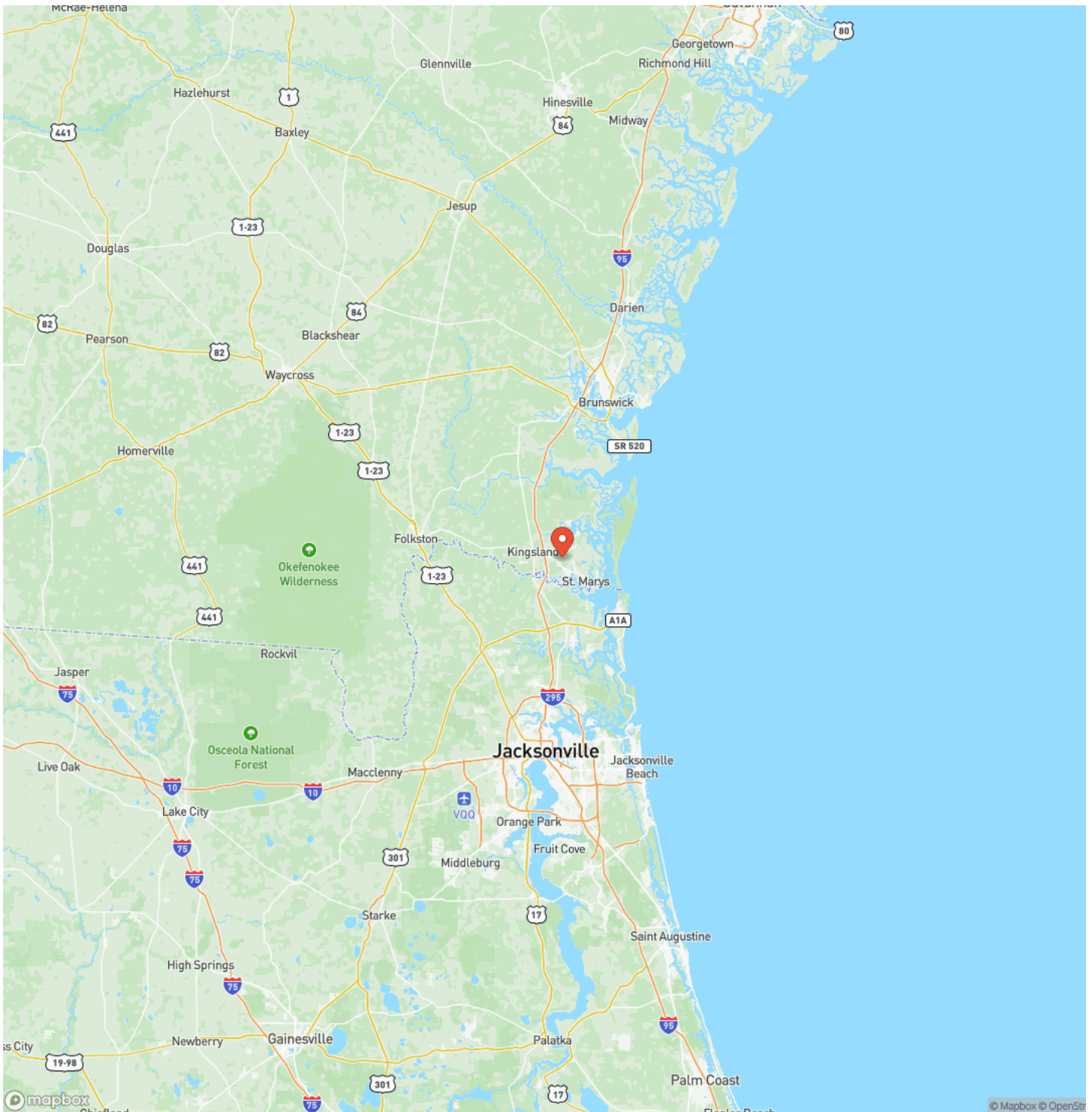
15 Acre Commercial - Development Tract on Kings Bay Rd in Camden County, GA
Saint Marys, GA / Camden County



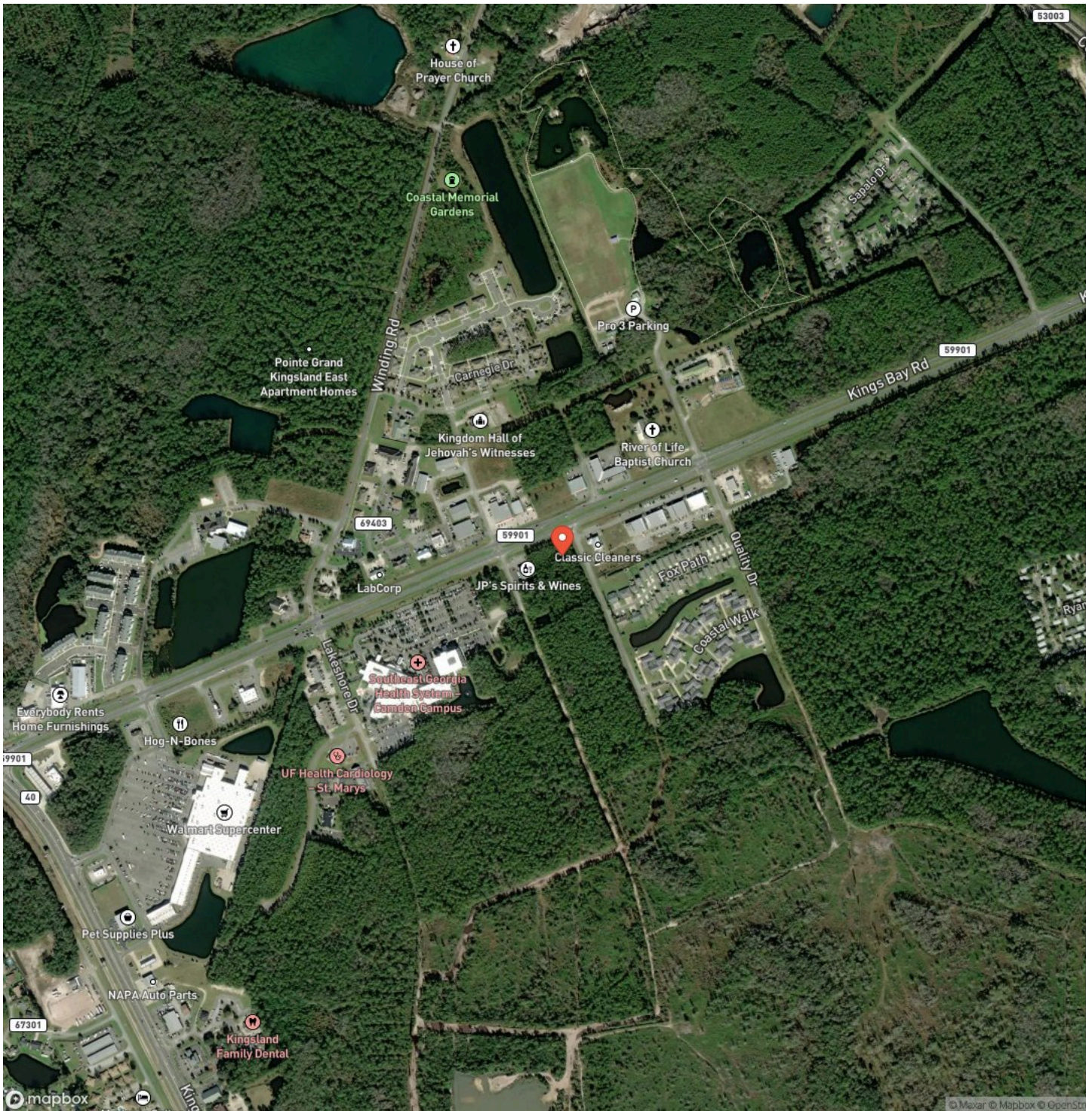
Locator Map



Locator Map



Satellite Map



**15 Acre Commercial - Development Tract on Kings Bay Rd in Camden County, GA
Saint Marys, GA / Camden County**

LISTING REPRESENTATIVE

For more information contact:



Representative

Terrell Brazell

Mobile

(912) 674-2700

Email

tbrazell@mossyoakproperties.com

Address

309 Arnow Court

City / State / Zip

Saint Marys, GA 31558

NOTES



[illegible]

MossyOakProperties.com

DISCLAIMERS

Information in this brochure is provided solely for information purposes and does not constitute an offer to sell or advertise real estate outside the states in which broker or agent licensed. The information presented has been obtained from sources deemed to be reliable, but is not guaranteed or warranted by the agent, broker, or the sellers of these properties. This offering is subject to errors, omissions, prior sale, price change, correction or withdrawal from the market without notice. All references to age, square footage, income, expenses, acreage, carrying capacity, and land classification, etc. are approximate. Prospective buyers are chargeable with and expected to conduct their own independent investigation of the information and the property and to rely only on those results. Sellers reserve the right to accept or reject any and all offers without liability to any buyer or cooperating broker.

Maps are provided for illustration purposes only, the accuracy is not warranted. Parcels on interactive maps are not adjusted to match aerial backgrounds. This information is for reference purposes only and is not a legal document. Data maps contain errors. The seller and seller's agent are making known to all potential buyers that there may be variations between the location of the existing fence lines and the legal description of the deeded property. Seller and seller's agent make no warranties with regard to the location of the fence lines in relationship to the deeded property lines, nor does the Seller make any warranties or representations with regard to the specific acreage contained within the fenced property lines. Seller is selling the property in an "as is" condition, which includes the location of the fences as they exist. Boundaries shown on the accompanying maps are approximate, based on county parcel data. The maps are not to scale. The accuracy of the maps is not guaranteed. Prospective buyers are encouraged to verify fence lines, deeded property lines and acreages using a licensed surveyor at their own expense.

Mossy Oak Properties Coastal Land and Real Estate
309 Arnow Court
Saint Marys, GA 31558
(912) 674-2700
MossyOakProperties.com

