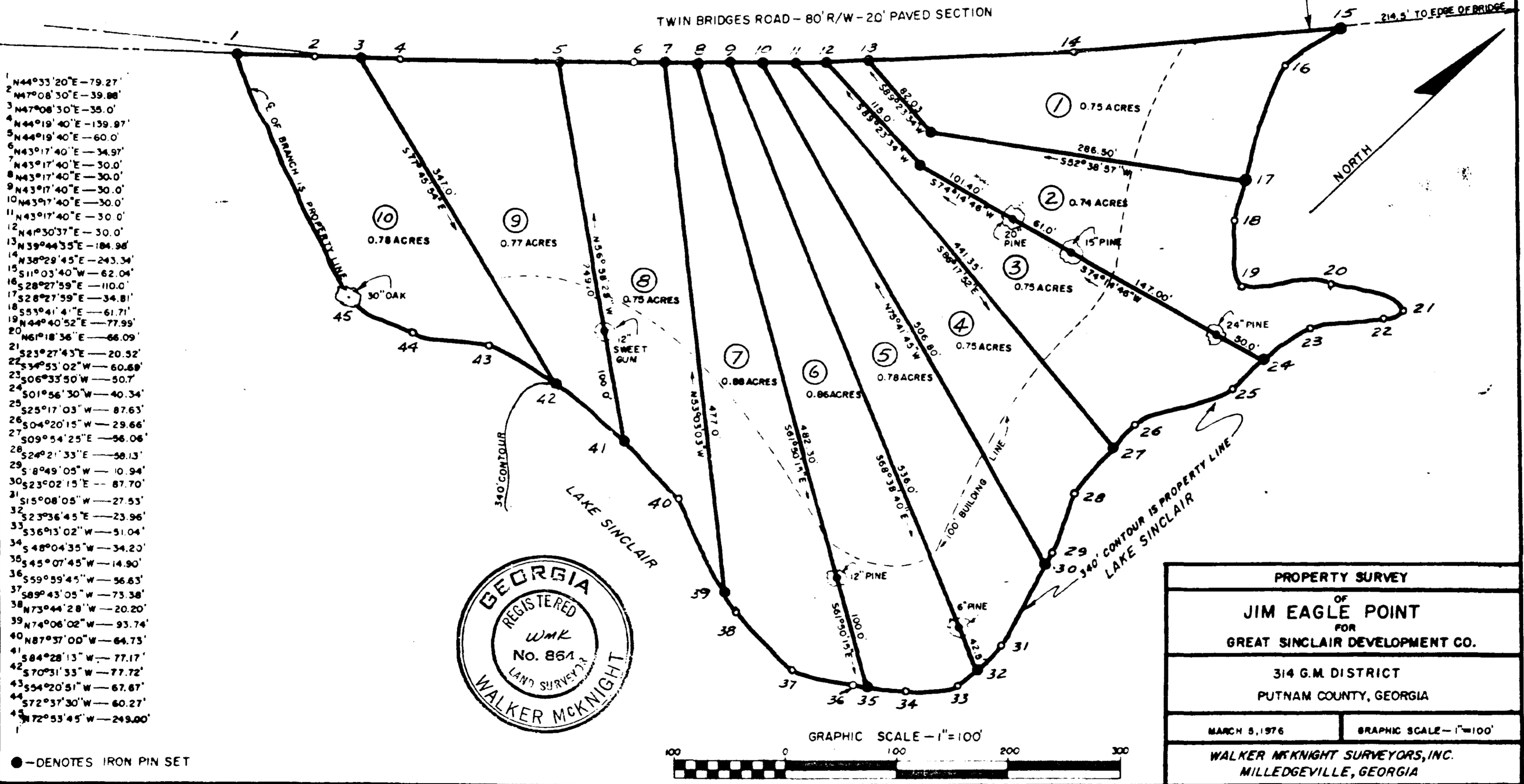
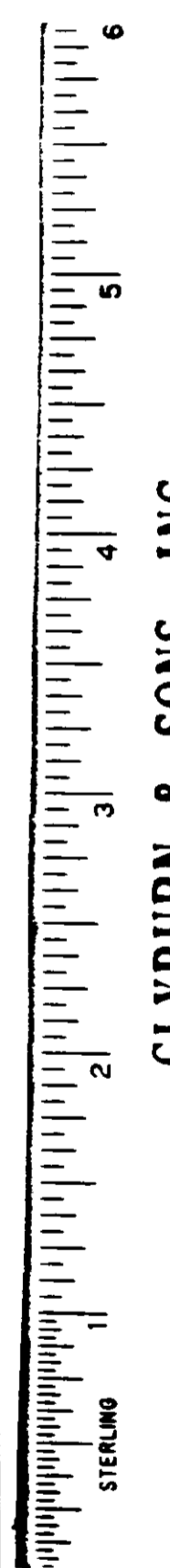


NOTE: APPROVAL FOR INDIVIDUAL SEWAGE SYSTEM FOR LOTS SHALL BE OBTAINED FROM PUTNAM COUNTY HEALTH DEPARTMENT PRIOR TO BUILDING CONSTRUCTION. APPROVAL CONTINGENT UPON SATISFACTORY TOPOGRAPHIC CONDITIONS REQUIRED BY GEORGIA LAW AND REGULATIONS, INDIVIDUAL LOT EXCEPTIONS TO 100' BUILDING LINE MAY BE GRANTED BY PUTNAM COUNTY HEALTH DEPARTMENT IF NOT IN CONFLICT WITH STATE LAW AND REGULATIONS.

APPROVED: Ben A. Butts  
PUTNAM COUNTY HEALTH DEPARTMENT



- 1 N44°33'20"E - 79.27'
- 2 N47°08'30"E - 39.88'
- 3 N47°08'30"E - 35.0'
- 4 N44°19'40"E - 159.97'
- 5 N44°19'40"E - 60.0'
- 6 N43°17'40"E - 34.97'
- 7 N43°17'40"E - 30.0'
- 8 N43°17'40"E - 30.0'
- 9 N43°17'40"E - 30.0'
- 10 N43°17'40"E - 30.0'
- 11 N43°17'40"E - 30.0'
- 12 N43°17'40"E - 30.0'
- 13 N39°44'35"E - 184.98'
- 14 N38°29'45"E - 243.34'
- 15 S11°03'40"W - 62.04'
- 16 S28°27'59"E - 110.0'
- 17 S28°27'59"E - 34.81'
- 18 S53°41'4"E - 61.71'
- 19 N44°40'52"E - 77.99'
- 20 N61°18'36"E - 66.09'
- 21 S23°27'43"E - 20.52'
- 22 S34°53'02"W - 60.68'
- 23 S06°33'50"W - 50.7'
- 24 S01°56'30"W - 40.34'
- 25 S25°17'03"W - 87.63'
- 26 S04°20'15"W - 29.66'
- 27 S09°54'25"E - 56.06'
- 28 S24°21'33"E - 58.13'
- 29 S8°49'05"W - 10.94'
- 30 S23°02'15"E - 87.70'
- 31 S15°08'05"W - 27.53'
- 32 S23°36'45"E - 23.96'
- 33 S36°13'02"W - 51.04'
- 34 S48°04'35"W - 34.20'
- 35 S45°07'45"W - 14.90'
- 36 S59°39'45"W - 56.63'
- 37 S89°43'05"W - 75.38'
- 38 N73°44'28"W - 20.20'
- 39 N74°06'02"W - 93.74'
- 40 N87°37'00"W - 64.73'
- 41 S84°28'13"W - 77.17'
- 42 S70°31'33"W - 77.72'
- 43 S54°20'51"W - 67.87'
- 44 S72°37'30"W - 60.27'
- 45 N72°53'45"W - 249.00'



CLYBURN & SONS, INC.  
Plat Book 7 Putnam County

Recorded May 25, 1976

Elizabeth W. Cardwell, D.C.S.C.

133