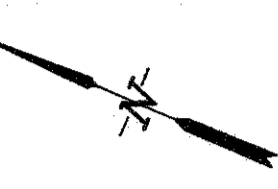


**BAY ROAD**  
 (180' R/W ~ PROJ. No. M-AD-20-1(8))  
 (4-LANE DIVIDED HIGHWAY, PAVED)

**KINGS**



NOW OR FORMERLY LANDS OF  
 KINGS BAY PROPERTIES, INC.

FINAL SUBDIVISION PLAT OF  
**THE VILLAGE AT KINGS BAY,**  
 CITY OF ST. MARYS, 29th G.M.D.,  
 CAMDEN COUNTY, GEORGIA

SHEET 2 OF 3  
 (SEE SHEET 1 OF 3 FOR GENERAL NOTES)

CAMDEN MEDICAL CENTER

NOW OR FORMERLY LANDS OF  
 KINGS BAY PROPERTIES, INC.

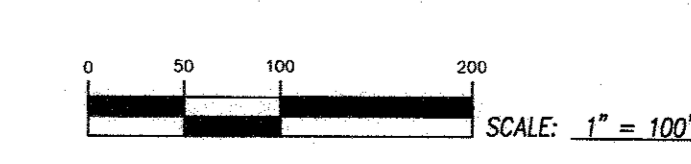
SHEET 2 OF 3  
 (SEE SHEET 1 OF 3 FOR GENERAL NOTES)

STATE OF GEORGIA - COUNTY OF CAMDEN  
 OFFICE OF THE CLERK OF SUPERIOR COURT  
 The within plat is recorded in Plat  
 Drawer #14, Map #57. This 31st day  
 of July, 2002.

*[Signature]*  
 Deputy Clerk

DWN. BY: T.L.P. CKD. BY: R.B.

PREPARED BY:  
**PRIVETT & ASSOCIATES, INC.**  
 SURVEYORS & LAND PLANNERS  
 LICENSED BUSINESS No. 166, GA.  
 LICENSED BUSINESS No. 4204, FL.  
 1201 SHADOWLAWN DRIVE  
 ST. MARYS, GEORGIA 31558  
 (912) 882-3738  
 DWG. No.: B-2-



F:\Trena\DWG02\stoverkpp1at.dwg

F.B. 280, PG. \_\_\_\_  
 CADD FILE: F:\Trena\DWG02\stoverkpp1at