

3.62 Acres in Camden County, GA
0 East 10th Street
Woodbine, GA 31569

\$62,000
3.620± Acres
Camden County



3.62 Acres in Camden County, GA
Woodbine, GA / Camden County

SUMMARY

Address

0 East 10th Street

City, State Zip

Woodbine, GA 31569

County

Camden County

Type

Undeveloped Land, Commercial

Latitude / Longitude

30.960471 / -81.712996

Taxes (Annually)

289

Acreage

3.620

Price

\$62,000

Property Website

<https://www.mossyoakproperties.com/property/3-62-acres-in-camden-county-ga-camden-georgia/40075/>



3.62 Acres in Camden County, GA **Woodbine, GA / Camden County**

PROPERTY DESCRIPTION

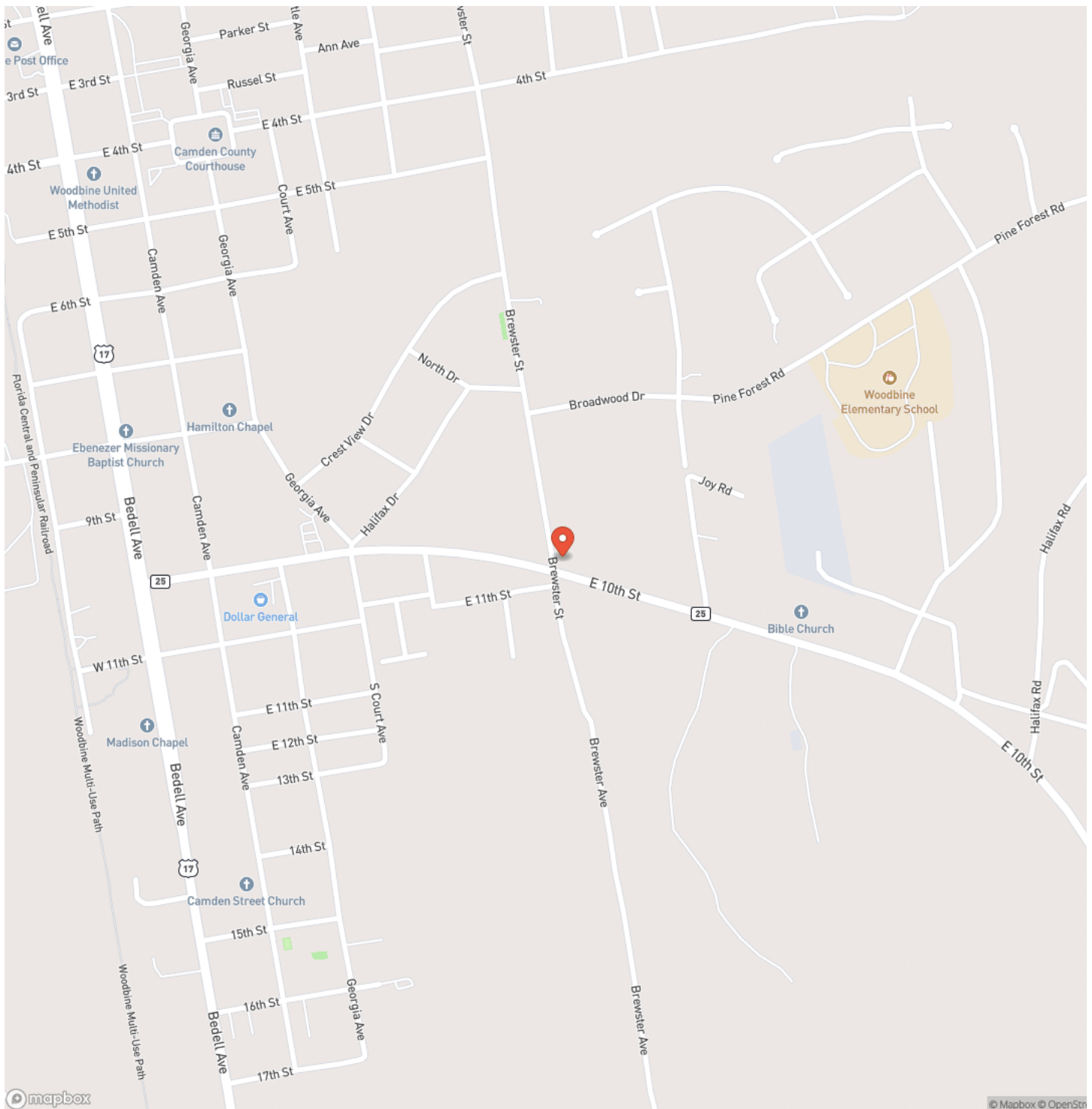
At just under 4 acres and located on a developing commercial corridor between I-95 and Woodbine, this undeveloped tract has commercial development potential. Located just outside of the county seat of Woodbine, GA, this site is adjacent to the city limits and neighboring land uses that include retail, light industrial and residential. Municipal services including water and sewer are available immediately across Brewster Avenue from this tract. Home to Kings Bay Naval Submarine Base, Camden County provides a home for the military as well as serving as a bedroom community with a convenient commute to both Brunswick, GA and Jacksonville, FL. For additional information on this tract and others, please contact Steven Barnes at [912.409.1527](tel:912.409.1527) or sbarnes@mossyoakproperties.com.



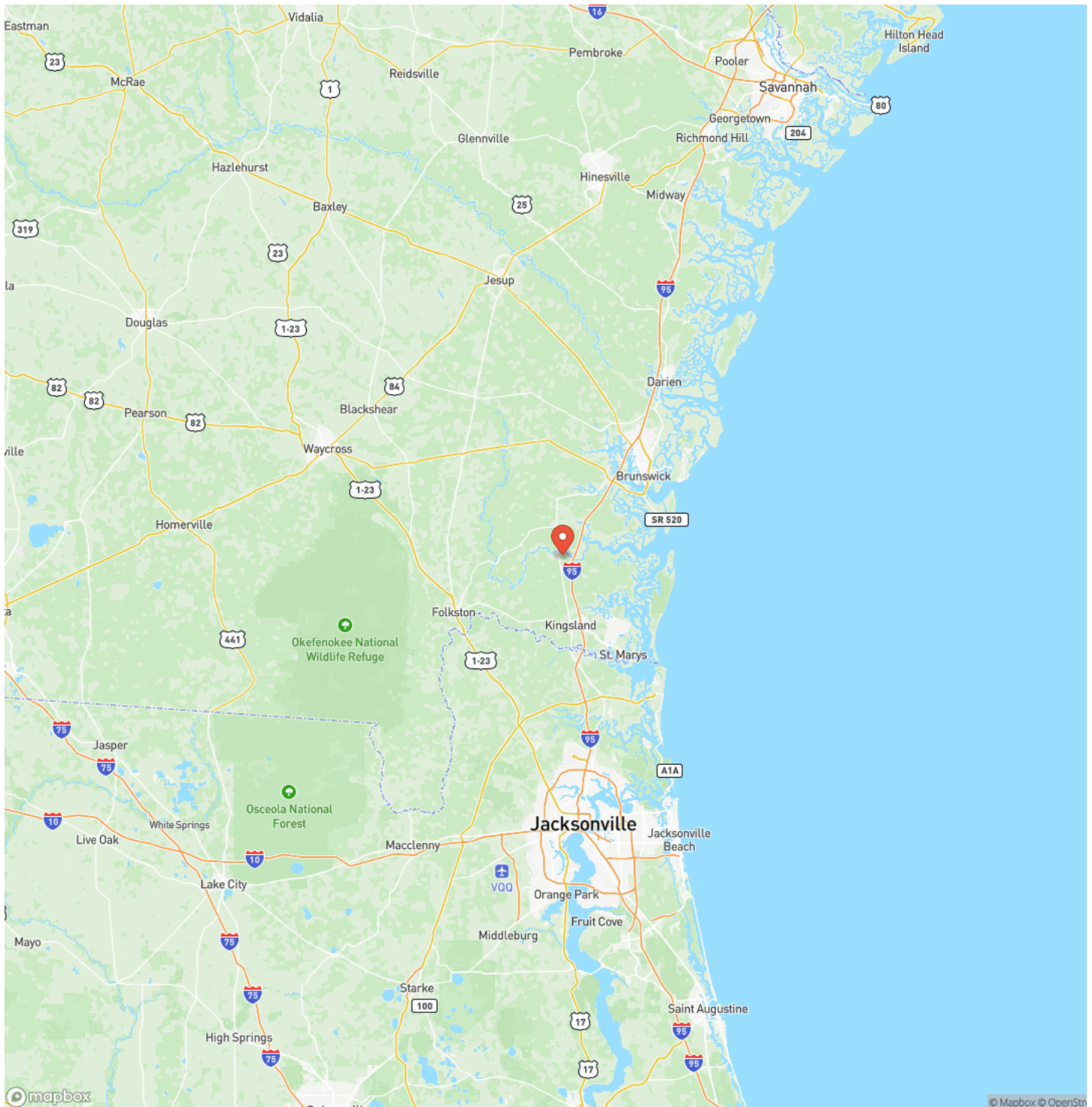
3.62 Acres in Camden County, GA
Woodbine, GA / Camden County



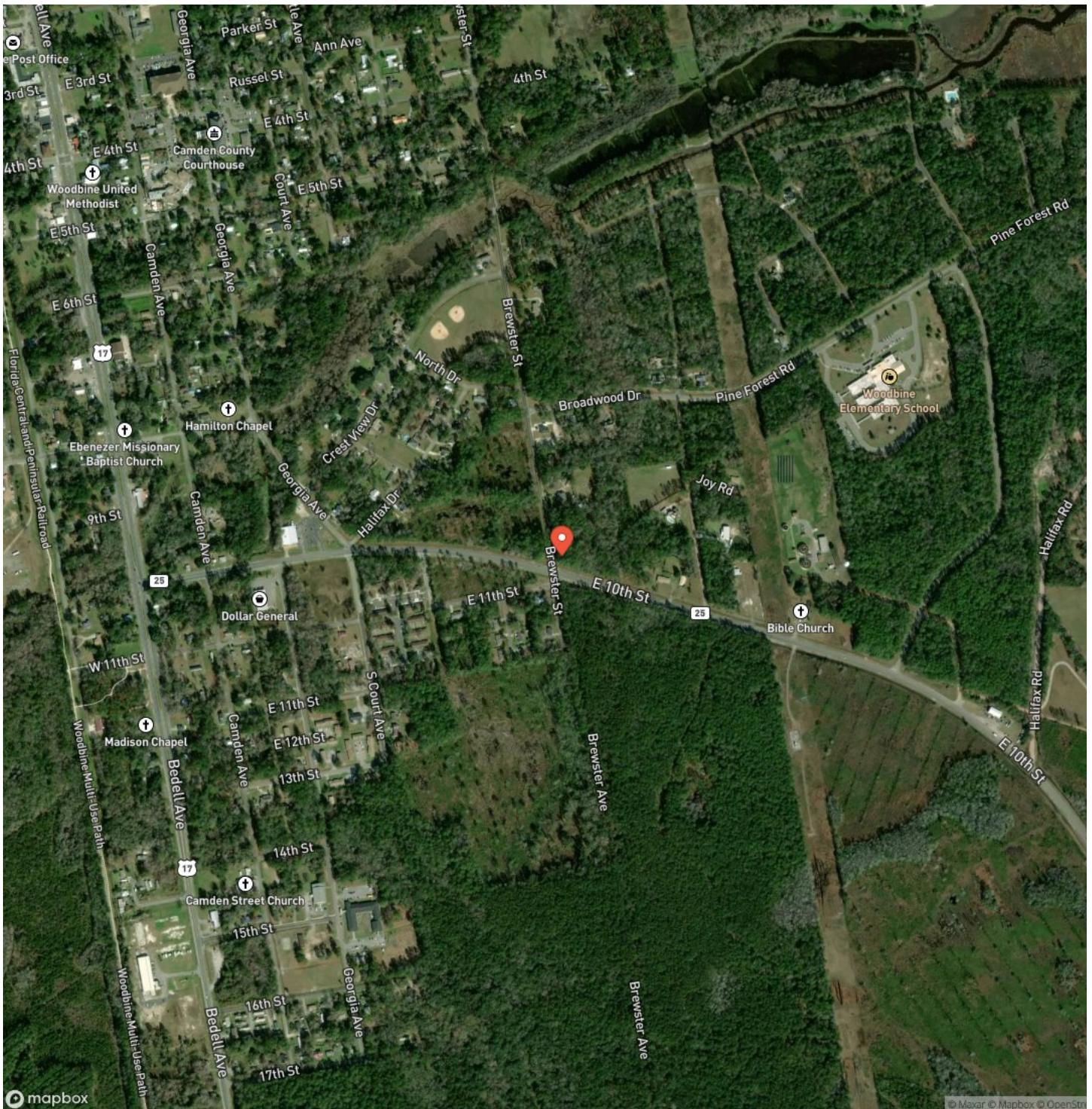
Locator Map



Locator Map



Satellite Map



3.62 Acres in Camden County, GA
Woodbine, GA / Camden County

LISTING REPRESENTATIVE

For more information contact:



Representative

Steven Barnes

Mobile

(912) 409-1527

Email

sbarnes@mossyoakproperties.com

Address

309 Arnow Court

City / State / Zip

Saint Marys, GA 31558

NOTES

This image shows a single page from a notebook or ledger. It features ten evenly spaced, thin black horizontal lines running across the width of the page. The background is plain white, and there are no margins, text, or other markings present.

MORE INFO ONLINE:

MossyOakProperties.com

This image shows a full page of white paper with horizontal ruling lines. The lines are evenly spaced and extend across the width of the page, providing a template for writing or drawing. There are no margins, text, or other markings on the paper.



DISCLAIMERS

Information in this brochure is provided solely for information purposes and does not constitute an offer to sell or advertise real estate outside the states in which broker or agent licensed. The information presented has been obtained from sources deemed to be reliable, is not guaranteed or warranted by the agent, broker, or the sellers of these properties. This offering is subject to errors, omissions, prior sale, price change, correction or withdrawal from the market without notice. All references to age, square footage, income, expenses, acreage, carrying capacity, and land classification, etc. are approximate. Prospective buyers are chargeable with and expected to conduct their own independent investigation of the information and the property and to rely only on those results. Sellers reserve the right to accept or reject any and all offers without liability to any buyer or cooperating broker.

Maps are provided for illustration purposes only, the accuracy is not warranted. Parcels on interactive maps are not adjusted to match aerial backgrounds. This information is for reference purposes only and is not a legal document. Data maps contain errors. The seller and seller's agent are making known to all potential buyers that there may be variations between the location of the existing fence lines and the legal description of the deeded property. Seller and seller's agent make no warranties with regard to the location of the fence lines in relation to the deeded property lines, nor does the Seller make any warranties or representations with regard to the specific acreage contained within the fenced property lines. Seller is selling the property in an "as is" condition, which includes the location of the fences as they exist. Boundaries shown on the accompanying maps are approximate, based on county parcel data. The maps are not to scale. The accuracy of the maps is not guaranteed. Prospective buyers are encouraged to verify fence lines, deeded property lines and acreages using a licensed surveyor at their own expense.



Mossy Oak Properties Coastal Land and Real Estate

309 Arnow Court
Saint Marys, GA 31558
(912) 674-2700
MossyOakProperties.com

