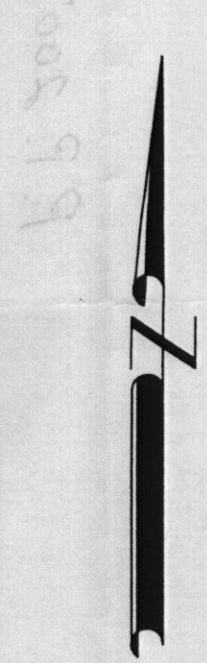


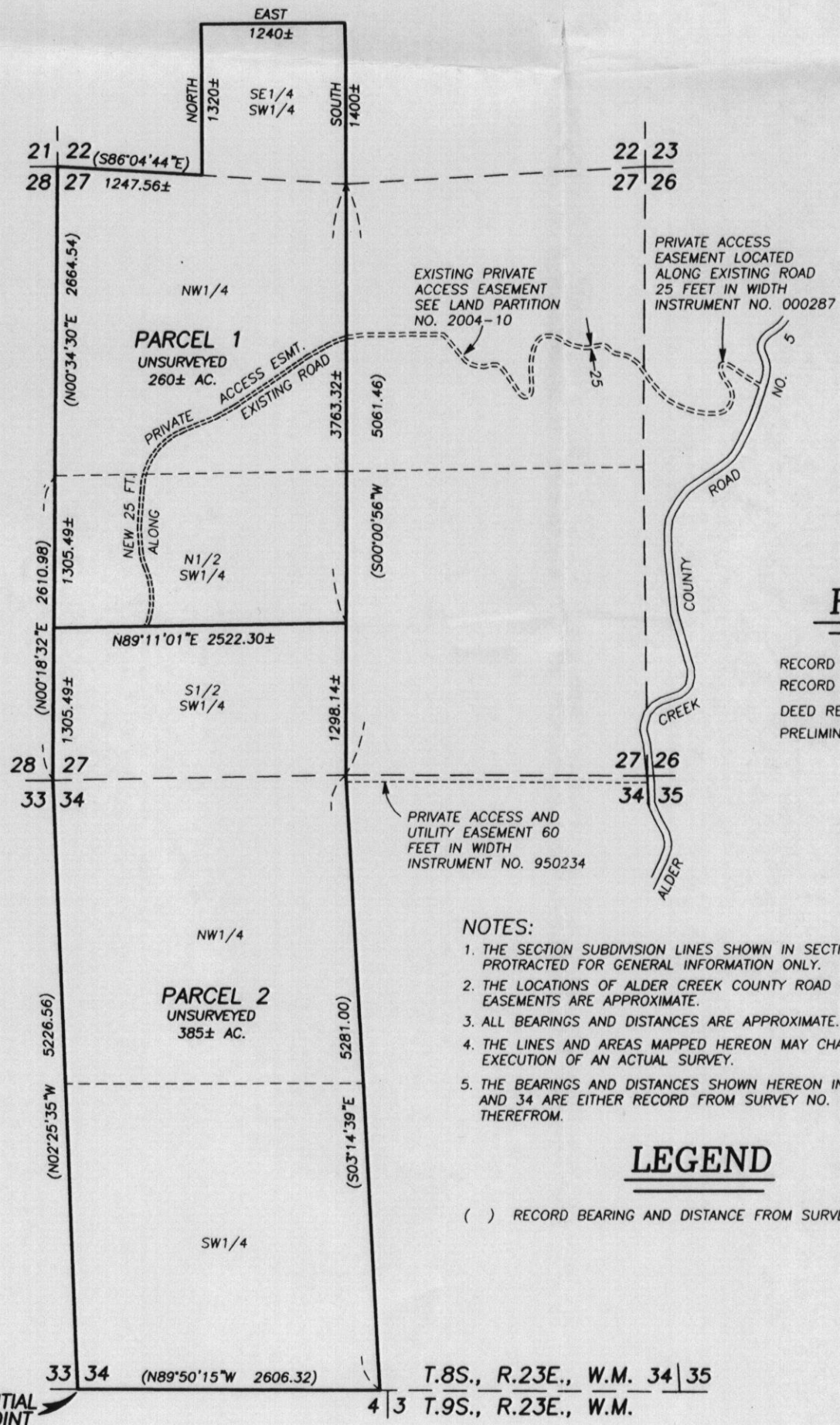
LAND PARTITION PLAT NO. 2007-12

BEING A PARTITION OF PARCEL 1 OF LAND PARTITION NO. 2004-10
SITUATED IN THE SW1/4 SECTION 22, THE SW1/4 AND THE NW1/4 SECTION 27
AND IN THE SW1/4 AND THE NW1/4 SECTION 34, T.8S., R.23E., W.M.,
WHEELER COUNTY, OREGON

DECEMBER 17, 2007



SCALE: 1" = 1000'



NOTES:

1. THE SECTION SUBDIVISION LINES SHOWN IN SECTION 22 ARE PROTRACTED FOR GENERAL INFORMATION ONLY.
2. THE LOCATIONS OF ALDER CREEK COUNTY ROAD NO. 5 AND ROAD EASEMENTS ARE APPROXIMATE.
3. ALL BEARINGS AND DISTANCES ARE APPROXIMATE.
4. THE LINES AND AREAS MAPPED HEREON MAY CHANGE UPON EXECUTION OF AN ACTUAL SURVEY.
5. THE BEARINGS AND DISTANCES SHOWN HEREON IN SECTIONS 27 AND 34 ARE EITHER RECORD FROM SURVEY NO. 479 OR CALCULATED THEREFROM.

LEGEND

() RECORD BEARING AND DISTANCE FROM SURVEY NO. 479

REFERENCES

RECORD MAP OF SURVEY NO. 479
RECORD LAND PARTITION PLAT NO. 2004-10
DEED RECORD INSTRUMENT NO.'S 980300
PRELIMINARY TITLE REPORT ORDER NO. WR-4757

APPROVALS

APPROVED THIS 18th DAY OF December, 2007.

Jim Kinsaling
MALHEUR COUNTY SURVEYOR

APPROVED THIS 27th DAY OF December, 2007.

Theresa A. Blahut
WHEELER COUNTY PLANNING DIRECTOR

ALL AD VALOREM AND SPECIAL ASSESSMENTS DUE PURSUANT TO LAW HAVE BEEN ASSESSED AND COLLECTED.

Mary Lou O'Connell *Vance J. Hines*
WHEELER COUNTY ASSESSOR TAX COLLECTOR
DATE: 12/27/07 DATE: 12-27-07

I DO HEREBY CERTIFY THAT THIS PLAT WAS RECEIVED ON THE 27th DAY OF December, 2007 AT 1:00 O'CLOCK P.M., AND RECORDED AS LAND PARTITION PLAT NO. 2007-12, WHEELER COUNTY RECORDS.

Jessica A. Strunfeld - Deputy
WHEELER COUNTY CLERK

I DO HEREBY CERTIFY THAT THIS IS A TRUE AND EXACT COPY OF LAND PARTITION PLAT NO. 2007-12.

M.C. Springer
BAGETT-GRIFFITH AND BLACKMAN

REGISTERED PROFESSIONAL LAND SURVEYOR

OREGON
JULY 9, 2002
MICHAEL C. SPRINGER
#70918

EXPIRES: 6/30/2008

RECEIVED AND FILED
DEC. 31, 2007
OFFICE OF COUNTY SURVEYOR

Robert J. Baggett
ATTEST: *Jessica A. Strunfeld*

SURVEYOR'S CERTIFICATE

I, MICHAEL C. SPRINGER, PROFESSIONAL LAND SURVEYOR, REGISTERED IN THE STATE OF OREGON, HEREBY CERTIFY THAT I HAVE CORRECTLY SHOWN THE UNSURVEYED PARCELS ON THIS PARTITION PLAT. SAID PARTITION BEING SITUATED IN THE SW1/4 SECTION 22, THE SW1/4 AND THE NW1/4 SECTION 27 AND IN THE SW1/4 AND THE NW1/4 SECTION 34, T.8S., R.23E., W.M., WHEELER COUNTY, OREGON, SAID PARTITION BEING DESCRIBED AS FOLLOWS:

PARCEL 1 OF LAND PARTITION NO. 2004-10, ON FILE AND OF RECORD IN THE OFFICE OF THE COUNTY CLERK OF WHEELER COUNTY OREGON.

I DO HEREBY DESIGNATE THE SW CORNER OF SECTION 34 AS THE INITIAL POINT OF THIS LAND PARTITION.

THIS PARTITION CONTAINS 645 ACRES, MORE OR LESS.

BAGETT, GRIFFITH & BLACKMAN
PROFESSIONAL LAND SURVEYORS
217 NORTH CANYON BLVD.
JOHN DAY, OREGON
(541) 575-1251

EASEMENTS

1. ANY RIGHTS OF WAY FOR PUBLIC UTILITIES CROSSING THE DESCRIBED LANDS.
2. EASEMENTS, RIGHTS OF WAY AND RESERVATIONS AS THE SAME MAY EXIST OR APPEAR OF RECORD.

DECLARATION

KNOW ALL PEOPLE BY THESE PRESENTS THAT WE, AL M. GARBER AND SHIRLEY A. GARBER, HUSBAND AND WIFE, HEREBY DECLARE THAT WE ARE THE OWNERS OF THE LAND DESCRIBED IN THE SURVEYOR'S CERTIFICATE AND THAT WE HAVE CAUSED SAID LAND TO BE PARTITIONED IN ACCORDANCE WITH THE PROVISIONS OF ORS CHAPTER 92, AS SHOWN ON THE ANNEXED MAP.

WE DO HEREBY CREATE A PRIVATE ACCESS EASEMENT TO THE BENEFIT OF PARCEL 2 OF THIS LAND PARTITION. SAID EASEMENT IS CENTERED ON AN EXISTING ROAD, OVER AND ACROSS A PORTION OF PARCEL 1, SAID EASEMENT BEING 25 FEET IN WIDTH, 12.5 FEET ON EACH SIDE OF THE CENTERLINE OF SAID EXISTING ROAD. SAID EASEMENT IS FOR THE PURPOSE OF INGRESS AND EGRESS FROM PARCEL 2 TO THE APPURTENANT ACCESS EASEMENTS CONNECTING WITH ALDER CREEK COUNTY ROAD NO. 5, AS SAID EASEMENTS ARE SHOWN ON LAND PARTITION NO. 2004-10 AND AS SHOWN HEREON.

Al M. Garber
AL M. GARBER

Shirley A. Garber
SHIRLEY A. GARBER

ACKNOWLEDGMENT

STATE OF OREGON
COUNTY OF WHEELER SS

THIS INSTRUMENT WAS ACKNOWLEDGED BEFORE ME ON DEC 20, 2007, BY AL M. GARBER AND SHIRLEY A. GARBER, HUSBAND AND WIFE.

Ronda Fischer
NOTARY PUBLIC FOR OREGON

MY COMMISSION EXPIRES 3/18/2011

