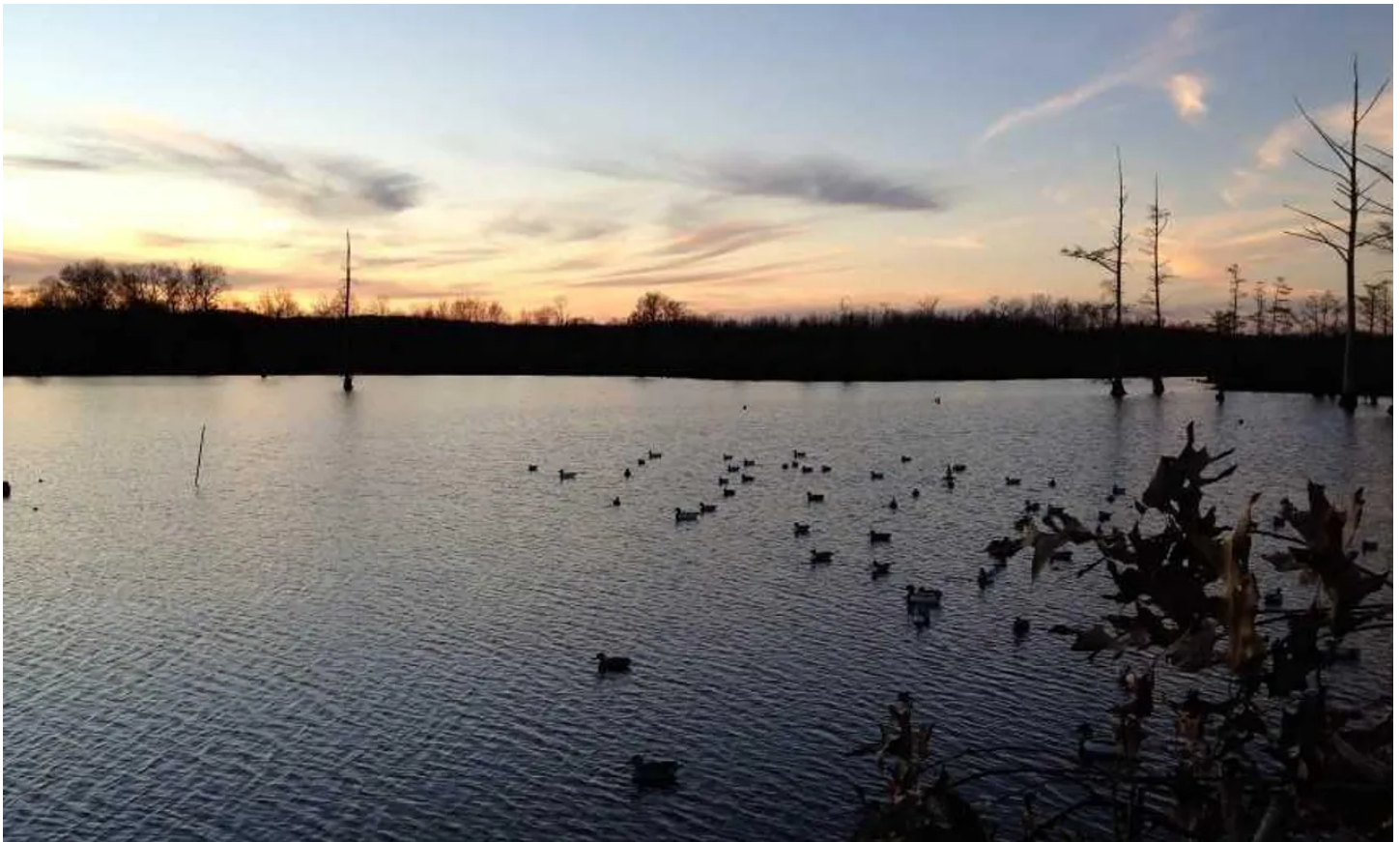


**160 AC. SLASH FARM: TUSCUMBIA RIVER BOTTOM.  
REDUCED \$100K READY TO SELL. LOTS OF DUCKS**  
County road 760  
Corinth, MS 38834

**\$399,000**  
160± Acres  
Alcorn County



**160 AC. SLASH FARM: TUSCUMBIA RIVER BOTTOM. REDUCED \$100K READY TO SELL. LOTS OF DUCKS**  
**Corinth, MS / Alcorn County**

---

**SUMMARY**

**Address**

County road 760

**City, State Zip**

Corinth, MS 38834

**County**

Alcorn County

**Type**

Recreational Land

**Latitude / Longitude**

34.9748 / -88.6817

**Acreage**

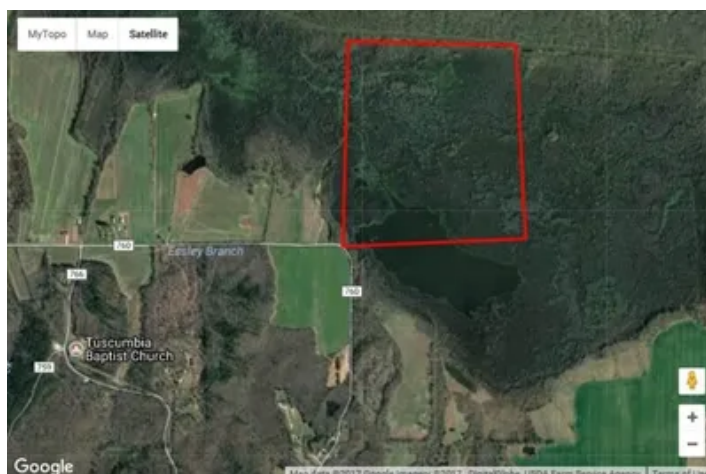
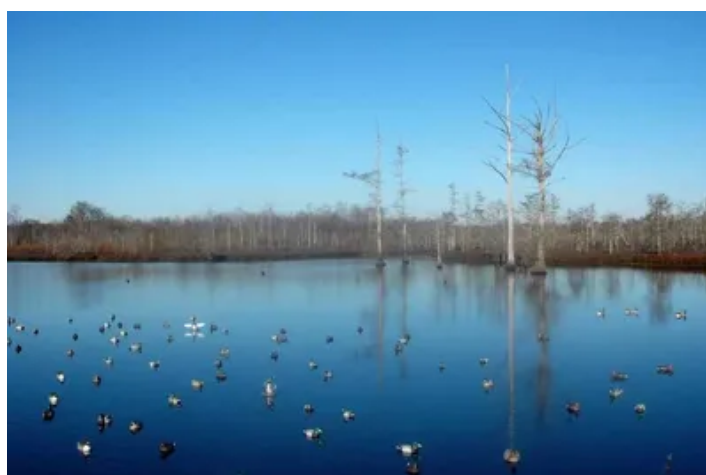
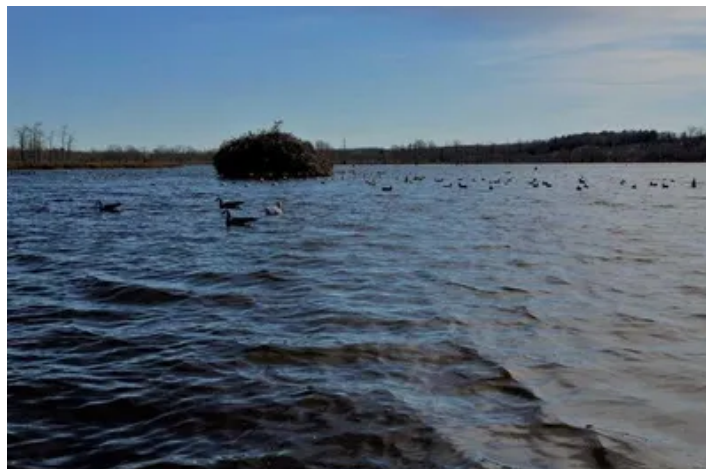
160

**Price**

\$399,000

**Property Website**

<https://www.mossyoakproperties.com/property/160-ac-slash-farm-tuscumbia-river-bottom-reduced-100k-ready-to-sell-lots-of-ducks-alcorn-mississippi/16079/>



**160 AC. SLASH FARM: TUSCUMBIA RIVER BOTTOM. REDUCED \$100K READY TO SELL. LOTS OF DUCKS**  
**Corinth, MS / Alcorn County**

---

**PROPERTY DESCRIPTION**

160 ACRE PURE DUCK HOLE, JUST NORTH OF HWY 72 IN THE TUSCUMBIA RIVER BOTTOM KNOWN AS THE SLASH. A GREAT OPPORTUNITY TO HUNT DUCKS AND FRESH WATER FISH FOR BASS AND CRAPPIE. EASILY ACCESSIBLE FROM BLACKTOP. MERE MINUTES FROM DOWNTOWN HISTORIC CORINTH, MS THIS IS A PROVEN DUCK HOLE FOR YEARS. TO SEE THIS LAND CALL BRAD HAWKINS WITH MOSSY OAK PROPERTIES [731 610 2473](tel:7316102473)

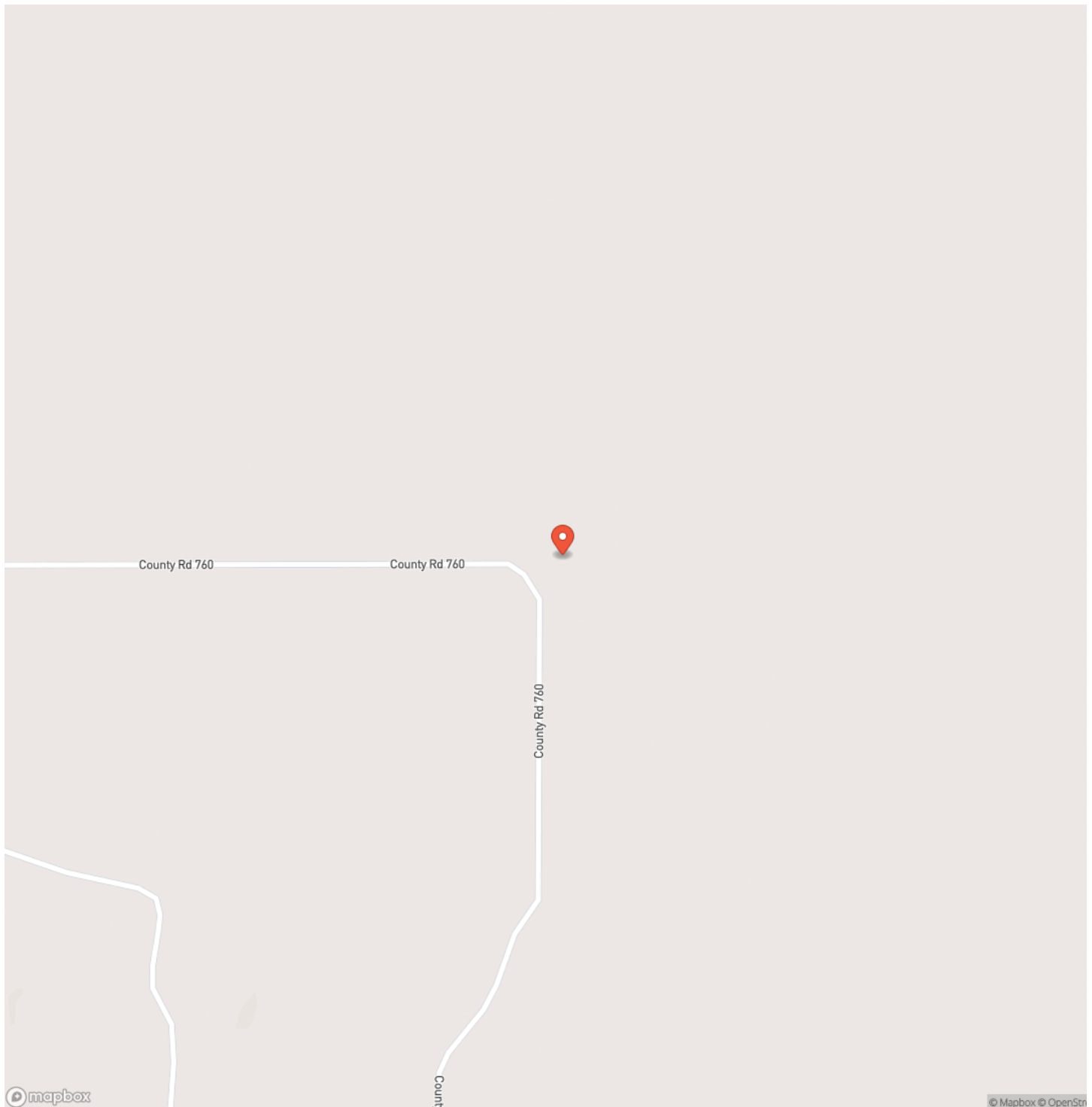
(recreational, 160 acre property, Corinth, MS 38834, Alcorn County, waterfowl, duck, geese, whitetail deer, freshwater fishing, lake, creek, water rights, mineral rights, oil and gas rights)



**160 AC. SLASH FARM: TUSCUMBIA RIVER BOTTOM. REDUCED \$100K READY TO SELL. LOTS OF DUCKS**  
**Corinth, MS / Alcorn County**

---

## Locator Map

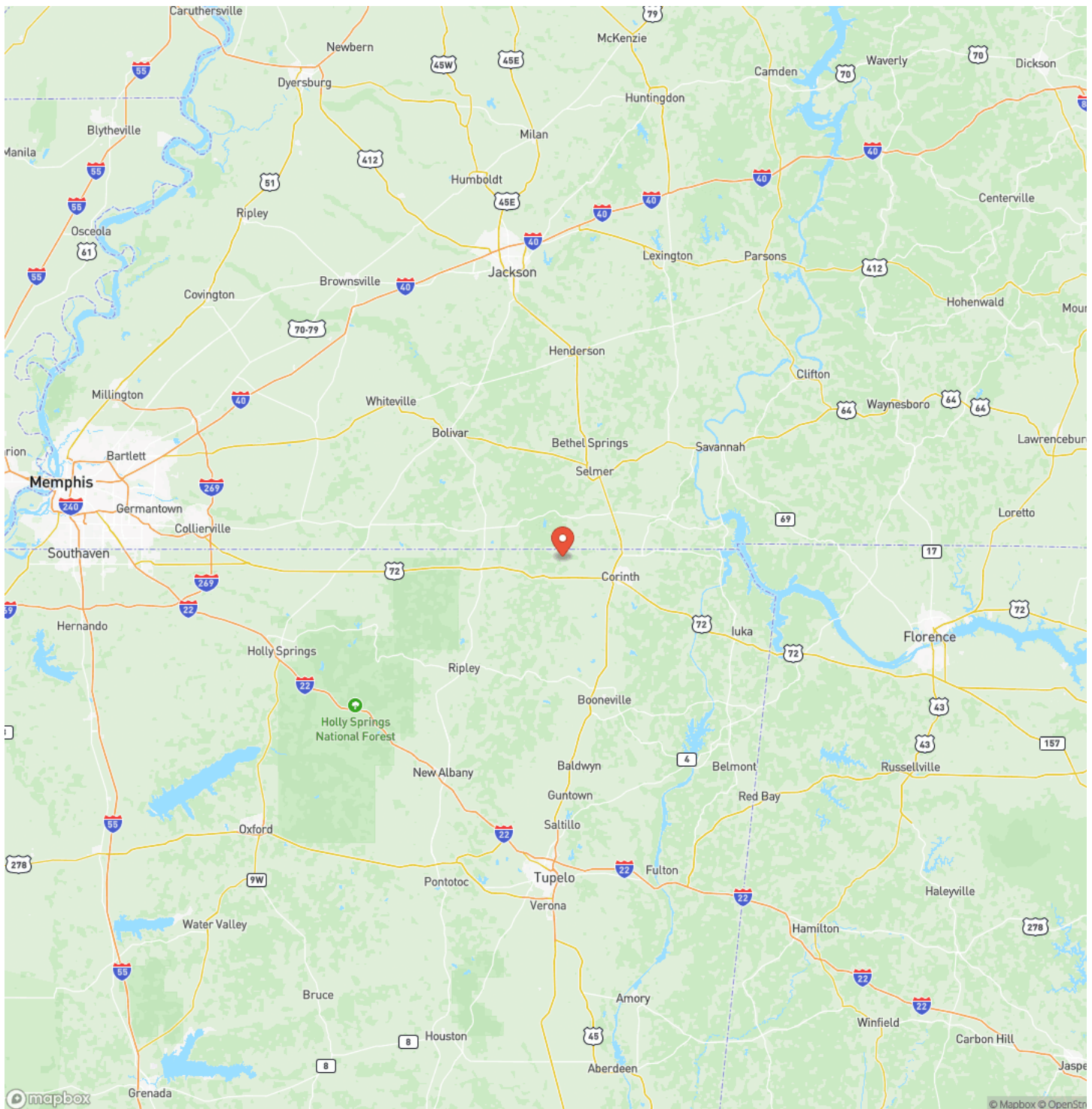




**160 AC. SLASH FARM: TUSCUMBIA RIVER BOTTOM. REDUCED \$100K READY TO SELL. LOTS OF DUCKS**  
**Corinth, MS / Alcorn County**

---

## Locator Map

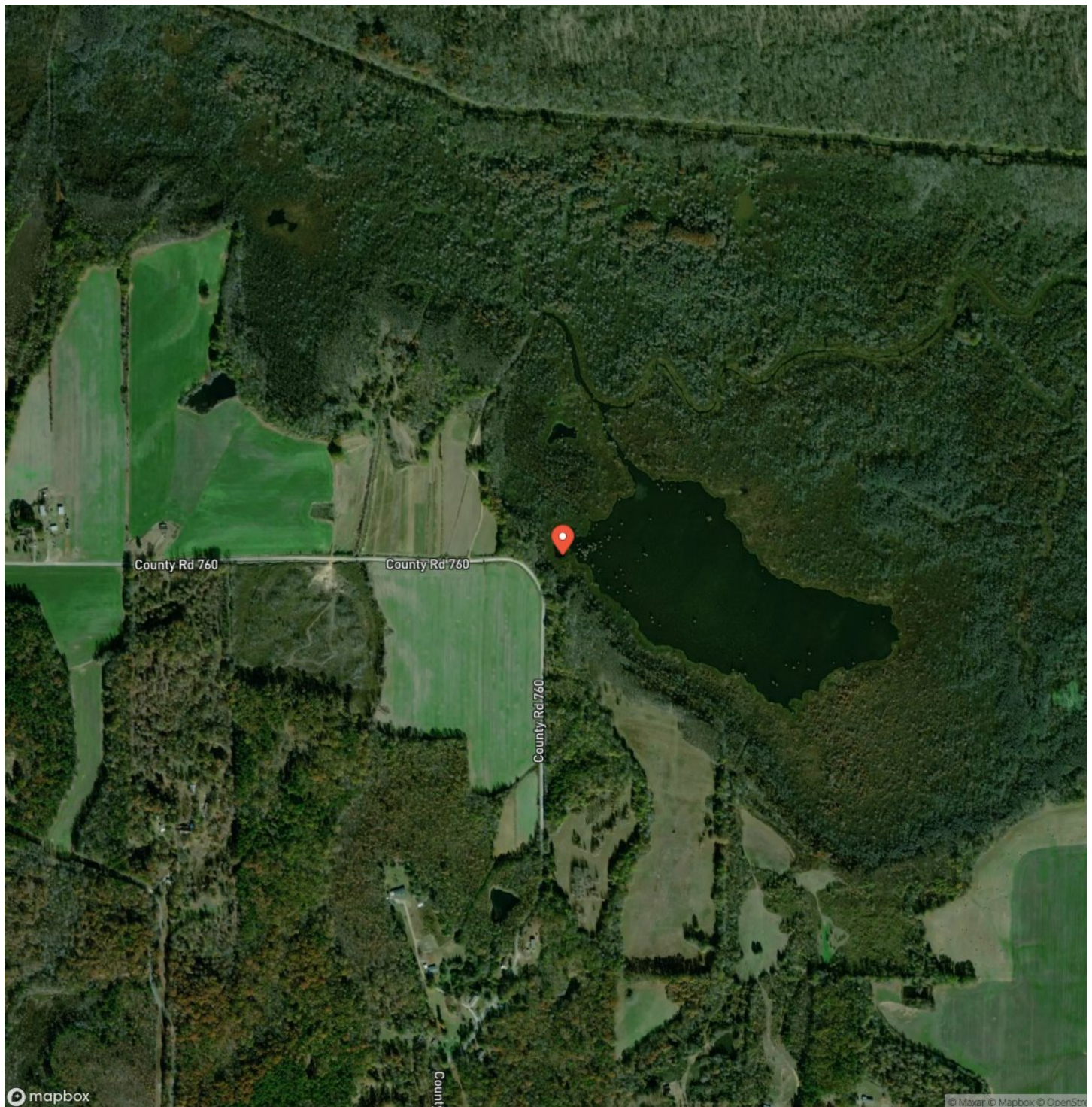




160 AC. SLASH FARM: TUSCUMBIA RIVER BOTTOM. REDUCED \$100K READY TO SELL. LOTS OF DUCKS  
Corinth, MS / Alcorn County

---

## Satellite Map



**160 AC. SLASH FARM: TUSCUMBIA RIVER BOTTOM. REDUCED \$100K READY TO SELL. LOTS OF DUCKS**  
**Corinth, MS / Alcorn County**

## LISTING REPRESENTATIVE

**For more information contact:**



### Representative

Brad Hawkins

## Mobile

(731) 610-2473

## Email

bhawkins@mossyoakproperties.com

## Address

569 Mulberry Ave.

## City / State / Zip

Selmer, TN 38375

## NOTES



**MORE INFO ONLINE:**

**MossyOakProperties.com**

## This image shows a blank sheet of white paper with horizontal ruling lines. The lines are evenly spaced and extend across the width of the page. There are no margins, text, or other markings on the paper.





## **DISCLAIMERS**

Information in this brochure is provided solely for information purposes and does not constitute an offer to sell or advertise real estate outside the states in which broker or agent licensed. The information presented has been obtained from sources deemed to be reliable, but is not guaranteed or warranted by the agent, broker, or the sellers of these properties. This offering is subject to errors, omissions, prior sale, price change, correction or withdrawal from the market without notice. All references to age, square footage, income, expenses, acreage, carrying capacity, and land classification, etc. are approximate. Prospective buyers are chargeable with and expected to conduct their own independent investigation of the information and the property and to rely only on those results. Sellers reserve the right to accept or reject any and all offers without liability to any buyer or cooperating broker.

Maps are provided for illustration purposes only, the accuracy is not warranted. Parcels on interactive maps are not adjusted to match aerial backgrounds. This information is for reference purposes only and is not a legal document. Data maps contain errors. The seller and seller's agent are making known to all potential buyers that there may be variations between the location of the existing fence lines and the legal description of the deeded property. Seller and seller's agent make no warranties with regard to the location of the fence lines in relationship to the deeded property lines, nor does the Seller make any warranties or representations with regard to the specific acreage contained within the fenced property lines. Seller is selling the property in an "as is" condition, which includes the location of the fences as they exist. Boundaries shown on the accompanying maps are approximate, based on county parcel data. The maps are not to scale. The accuracy of the maps is not guaranteed. Prospective buyers are encouraged to verify fence lines, deeded property lines and acreages using a licensed surveyor at their own expense.



---

**Mossy Oak Properties Dixie Land & Wildlife**

**569 Mulberry Ave.**

**Selmer, TN 38375**

**(731) 645-3800**

**MossyOakProperties.com**

---



**MORE INFO ONLINE:**

**MossyOakProperties.com**