

Kentucky Cattle Horse & hunting farm for Sale
0
Horse Cave, KY 42749

\$1,159,799
258± Acres
Hart County



Kentucky Cattle Horse & hunting farm for Sale
Horse Cave, KY / Hart County

SUMMARY

Address

0 Fisher Ridge Rd

City, State Zip

Horse Cave, KY 42749

County

Hart County

Type

Farms, Recreational Land, Hunting Land, Undeveloped Land, Timberland

Latitude / Longitude

37.200025 / -85.951177

Acreage

258

Price

\$1,159,799



Kentucky Cattle Horse & hunting farm for Sale Horse Cave, KY / Hart County

PROPERTY DESCRIPTION

258± Acres | Horse Cave, Kentucky | Hart County

Outstanding opportunity to own 258± acres of prime Hart County farmland located in Horse Cave, Kentucky, with easy access to I-65. This versatile mixed-use property is ideally positioned just 20 minutes from Mammoth Cave National Park and approximately 40 minutes from Bowling Green and Western Kentucky University.

The farm offers an excellent balance of open pasture and mature timber, making it well-suited for cattle or horse operations, recreational use, or a premier hunting property. Multiple automatic livestock water stations are already in place, adding immediate value for agricultural operations. Long road frontage provides excellent access and allows for the potential to divide the property into smaller tracts if desired.

Abundant wildlife including deer and turkey make this a strong hunting farm, while the open rolling ground provides multiple ideal building sites for a dream home, farm headquarters, or weekend retreat. The property's proximity to Green River, Mammoth Cave, and Nolin Lake offers endless opportunities for outdoor recreation including fishing, boating, kayaking, and hiking.

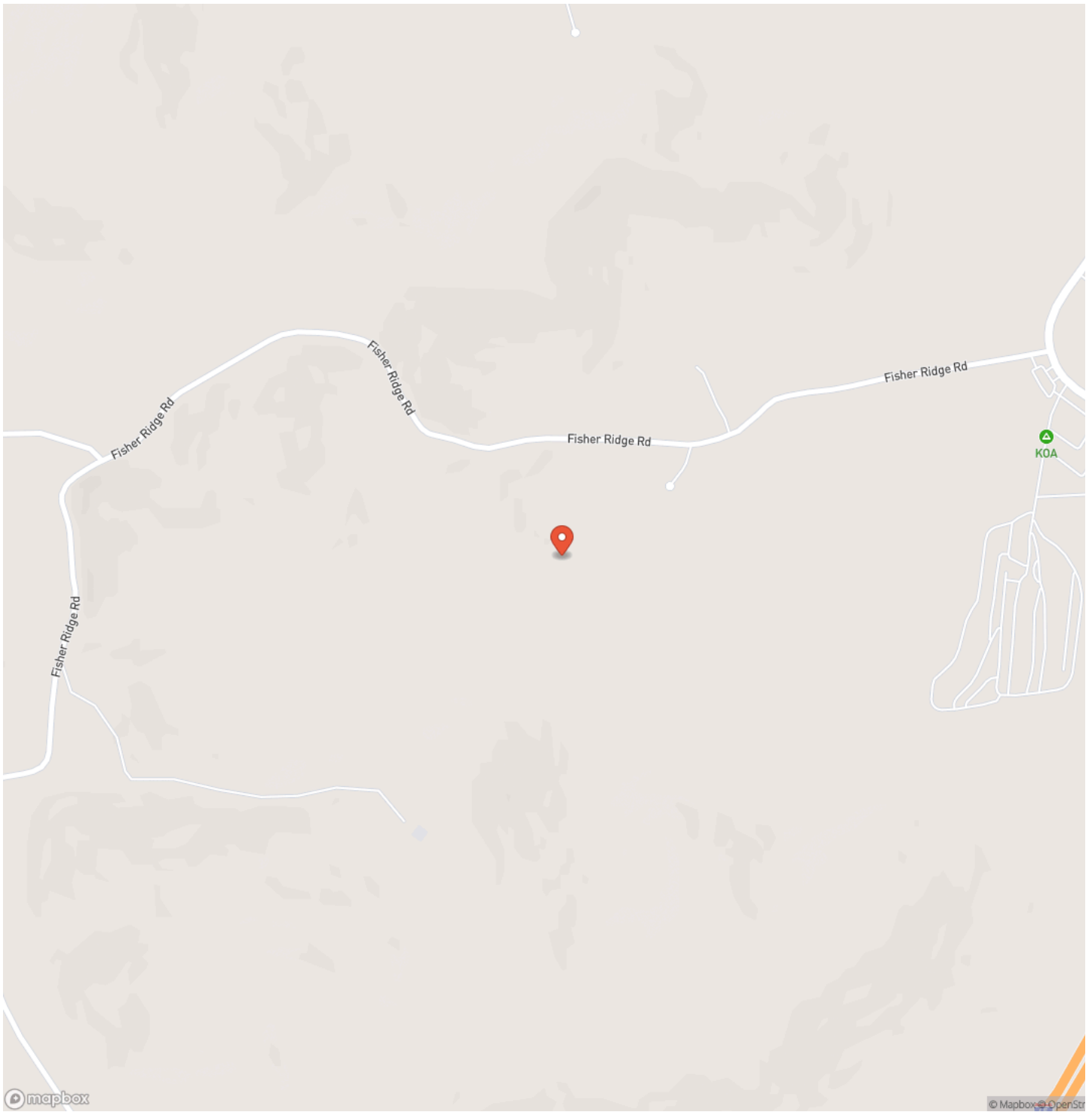
Whether you're seeking a productive cattle or horse farm, a premier hunting property, an investment tract, or a beautiful rural homesite this 258-acre farm checks every box

inside the 258 acre there are v4 tracts parcels that can be bought separately or combined

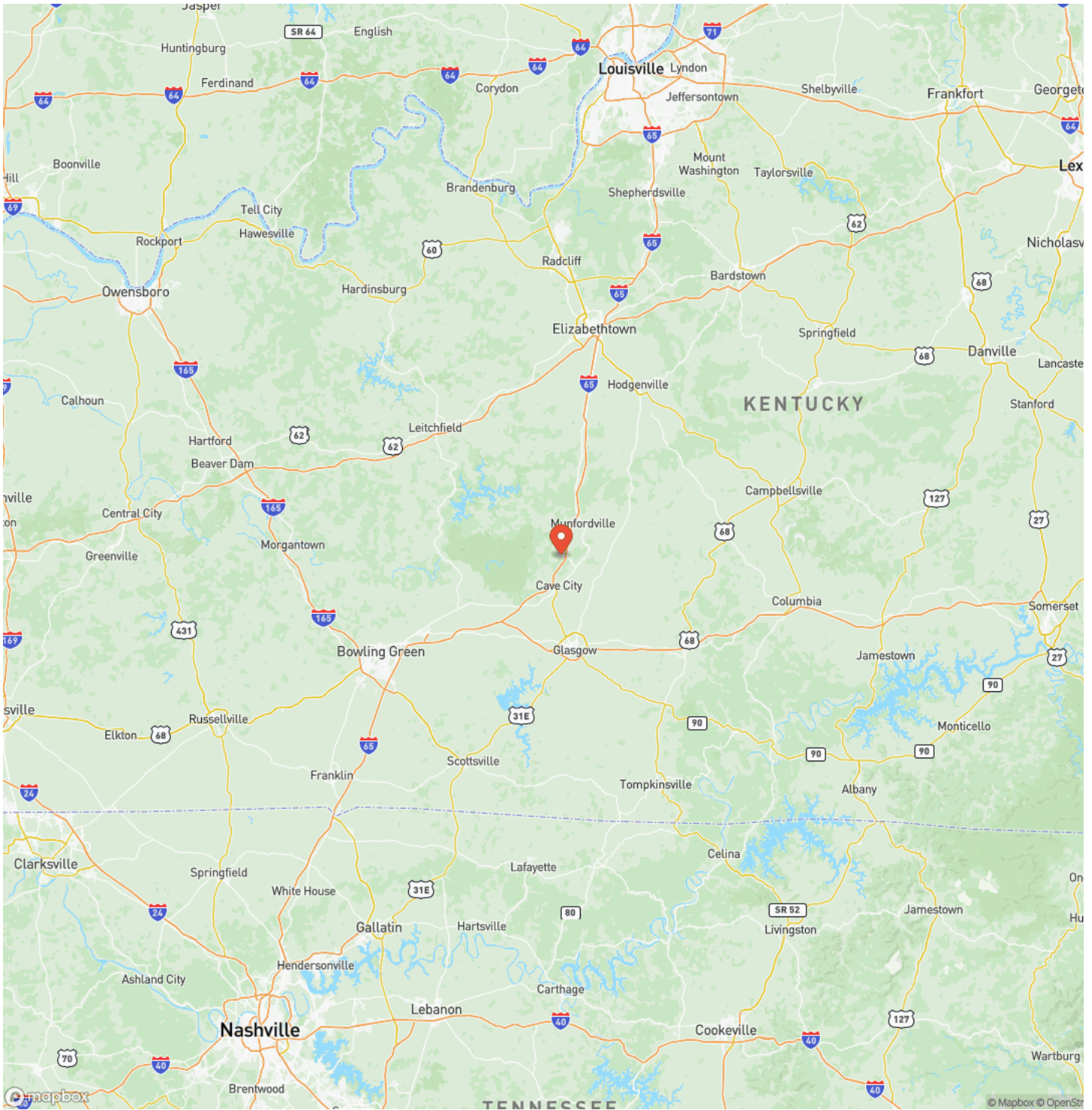
Kentucky Cattle Horse & hunting farm for Sale
Horse Cave, KY / Hart County



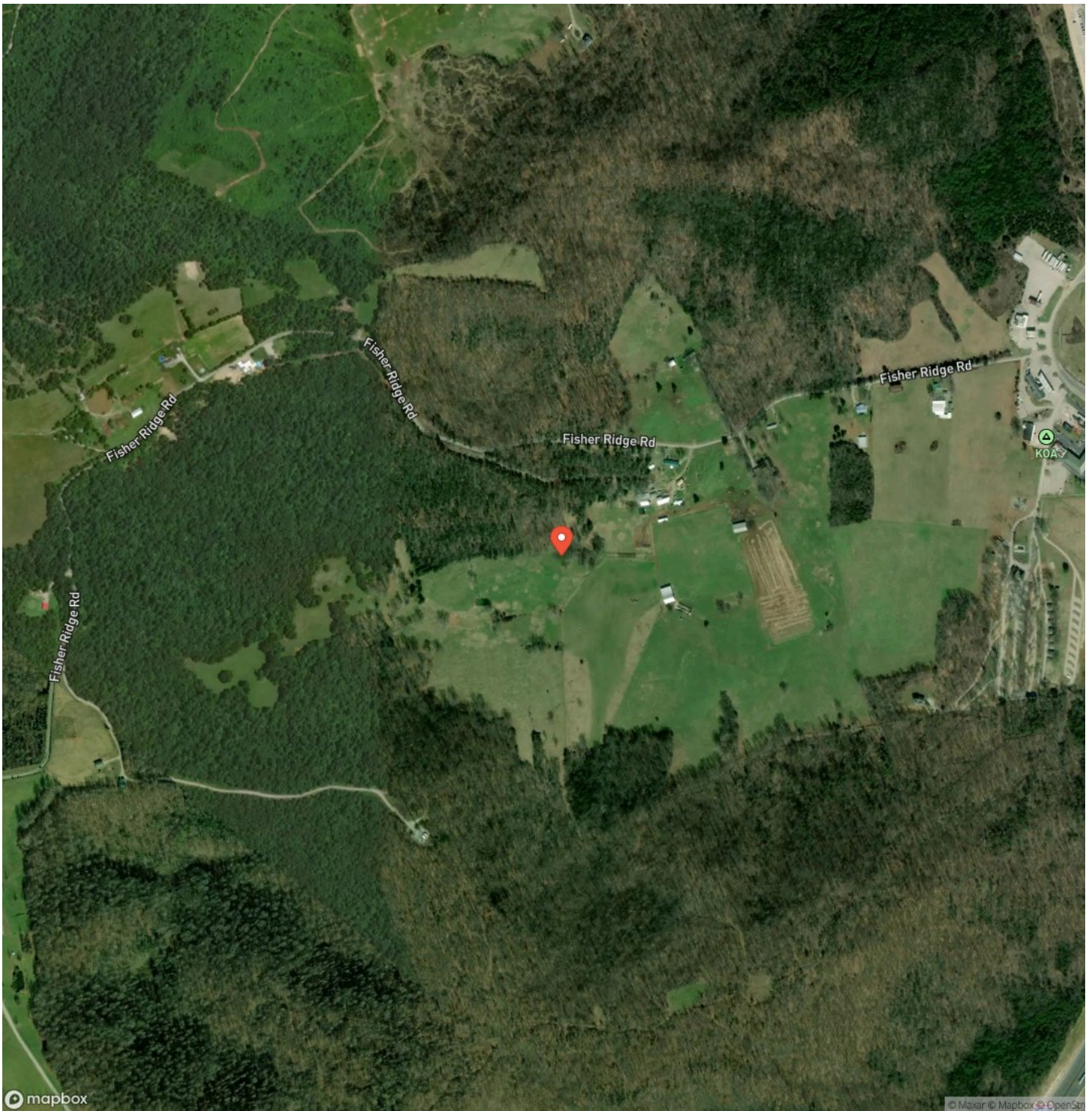
Locator Map



Locator Map



Satellite Map



DISCLAIMERS

Information in this brochure is provided solely for information purposes and does not constitute an offer to sell or advertise real estate outside the states in which broker or agent licensed. The information presented has been obtained from sources deemed to be reliable, but is not guaranteed or warranted by the agent, broker, or the sellers of these properties. This offering is subject to errors, omissions, prior sale, price change, correction or withdrawal from the market without notice. All references to age, square footage, income, expenses, acreage, carrying capacity, and land classification, etc. are approximate. Prospective buyers are chargeable with and expected to conduct their own independent investigation of the information and the property and to rely only on those results. Sellers reserve the right to accept or reject any and all offers without liability to any buyer or cooperating broker.

Maps are provided for illustration purposes only, the accuracy is not warranted. Parcels on interactive maps are not adjusted to match aerial backgrounds. This information is for reference purposes only and is not a legal document. Data maps contain errors. The seller and seller's agent are making known to all potential buyers that there may be variations between the location of the existing fence lines and the legal description of the deeded property. Seller and seller's agent make no warranties with regard to the location of the fence lines in relationship to the deeded property lines, nor does the Seller make any warranties or representations with regard to the specific acreage contained within the fenced property lines. Seller is selling the property in an "as is" condition, which includes the location of the fences as they exist. Boundaries shown on the accompanying maps are approximate, based on county parcel data. The maps are not to scale. The accuracy of the maps is not guaranteed. Prospective buyers are encouraged to verify fence lines, deeded property lines and acreages using a licensed surveyor at their own expense.



Mossy Oak Properties Hart Realty
Post Office Box 456
Munfordville, KY 42765
(270) 524-1980
<https://mossyoakproperties.com/>

