

W. H. Carpenter,
Cert. - Surveyor.

See Deed Book 49, page 519
for deed recorded.

of beginning.

R. L. EDWARDS

COMMUNITY OIL CO.

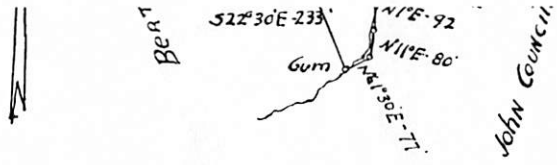
VA ELECTRIC AND POWER COMPANY
AP TO ACCOMPANY PART OF WHY AGREEMENT

TERSBURG DISTRICT

NOV SURRY VA.

TERSBURG OFFICE NO. 7058

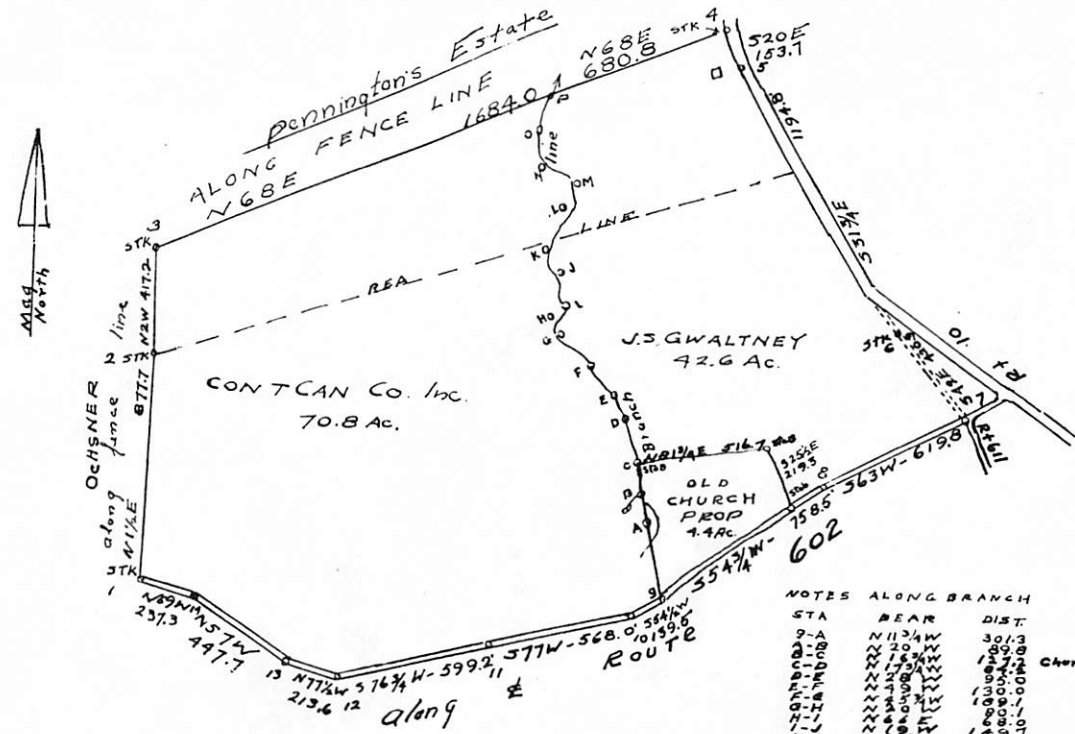
SO R. L. E.



PLAT SHOWING PROPERTY OF
HARRISON SPRATLEY ESTATE
CONVEYED TO
W. H. GALE
SURRY COUNTY, VIRGINIA
Scale 1"=400 Feet Nov 11th 1948
Ray Brinkley
See Deed Book 49, page 521.

PLAT SHOWING PROPERTY OF
ABRIM JONES
CONVEYED by J. S. WEBB
COBHAM DIST. SURRY, CO. VA
Scale 1"=100 Date Sept. 1954
See Deed Book 64,
Page 271 for deed.

J. S. Webb Reg. Engr.
SEAL.



NOTES ALONG BRANCH

STA	BEAR	DIST
9-A	N113°4'W	301.3
9-B	N20°E	89.9
9-C	N15°4'W	127.2
9-D	N17°3'W	138.3
9-E	N28°4'W	100.0
9-F	N19°3'W	130.0
9-G	N20°E	101.1
9-H	N22°E	100.0
9-I	N22°E	100.0
9-J	N22°E	100.0
9-K	N22°E	100.0
9-L	N22°E	100.0
9-M	N22°E	100.0
9-N	N22°E	100.0
9-O	N22°E	100.0
9-P	N22°E	201.9

Check previous

J. S. GWALTNEY TRACT
GUILFORD DIST - SURRY CO.
Scale 1"=700' 17 Oct 1949
C. H. Locke
C.L.S.

See Deed Book 50 page 397
Deed B-5 recorded.