

**UPDATED!! Luxury Estate and Outdoor Retreat on  
Acreage for sale in Carteret County, NC!  
811 US Hwy 70  
Davis, NC 28524**

**\$1,950,000**  
14.65± Acres  
Carteret County



**UPDATED!! Luxury Estate and Outdoor Retreat on Acreage for sale in Carteret County, NC!  
Davis, NC / Carteret County**

**SUMMARY**

**Address**

811 US Hwy 70

**City, State Zip**

Davis, NC 28524

**County**

Carteret County

**Type**

Hunting Land, Recreational Land, Residential Property, Business Opportunity

**Latitude / Longitude**

34.80433 / -76.46149

**Dwelling Square Feet**

6,424

**Bedrooms / Bathrooms**

3 / 6.5

**Acreage**

14.65

**Price**

\$1,950,000

**Property Website**

<https://www.mossoakproperties.com/property/updated-luxury-estate-and-outdoor-retreat-on-acreage-for-sale-in-carteret-county-nc-/carteret/north-carolina/90297/>



**UPDATED!! Luxury Estate and Outdoor Retreat on Acreage for sale in Carteret County, NC!  
Davis, NC / Carteret County**

---

**PROPERTY DESCRIPTION**

**14.65-Acre Luxury Estate & Outdoor Retreat with Pool, Guest Quarters & Private Boat Access. Featuring a Custom 6,400+ sq. ft. Home on 14 Acres with Ponds, Duck Impoundment. This is where Luxury Living Meets Outdoor Adventure. Take a look at this Elegant Coastal Estate & Sportsman's Paradise!**

Set on 14.65 serene acres, this remarkable property—once home to the Davis Shore Bed & Breakfast—offers endless possibilities. With 3 officially permitted bedrooms plus 2 versatile bonus rooms currently serving as bedrooms, the estate is equally suited for use as a private residence, hunting lodge, retreat, event venue, or even a revived bed-and-breakfast. The primary residence is roughly 6,424 square feet.

The main house boasts two commercial-grade kitchens, each with multiple ovens and dishwashers, designed to serve both the residence and the pool house. A grand, light-filled dining room comfortably seats 12, while the spectacular great room centers around a soaring stone fireplace, framed by custom alder cabinetry with concealed televisions. Additional gathering areas, including a piano alcove, make this space ideal for entertaining.

The primary suite is a retreat of its own, complete with a sitting area, dual walk-in closets, private laundry, a spacious two-person tiled shower, double vanity, and its own stone fireplace. Direct access to the pool house adds to its convenience. The north wing features a cozy den and four additional suites, each with a private bath, perfect for family, guests, or office space.

Storage and functionality abound with a butler's room, linen room, kitchen bath, upstairs laundry, and full attic. Outdoor living is just as impressive: the east screened porch overlooks a wooded landscape and fountain pond, while the west porch offers views of a second pond and sweeping grounds.

Connected by a breezeway, the 1,300 sq. ft. pool and recreation house is built for year-round enjoyment. Its infinity-edge, climate-controlled pool and spa are enclosed in a screened retreat accented with dramatic gas torches.

Additional structures include a 3-car garage with 6 bays for easy access. A 5,500 sq. ft. equipment shed with a 2-bedroom apartment and third kitchen, and a backup diesel generator capable of powering the entire property. A nearby boat slip adds yet another layer of convenience for coastal living.

Outdoor features include two ponds, a 2-acre waterfowl impoundment, and a private 0.06-acre lot with access to a boat ramp on Core Sound. Formerly operated as the Davis Shore Bed & Breakfast this property combines elegance with rustic charm. Wildlife abounds—whitetail deer, waterfowl, and even black bear—offering an unmatched outdoorsman's retreat just minutes from the coast.

Showings by appointment only with proof of funds or prequalification.

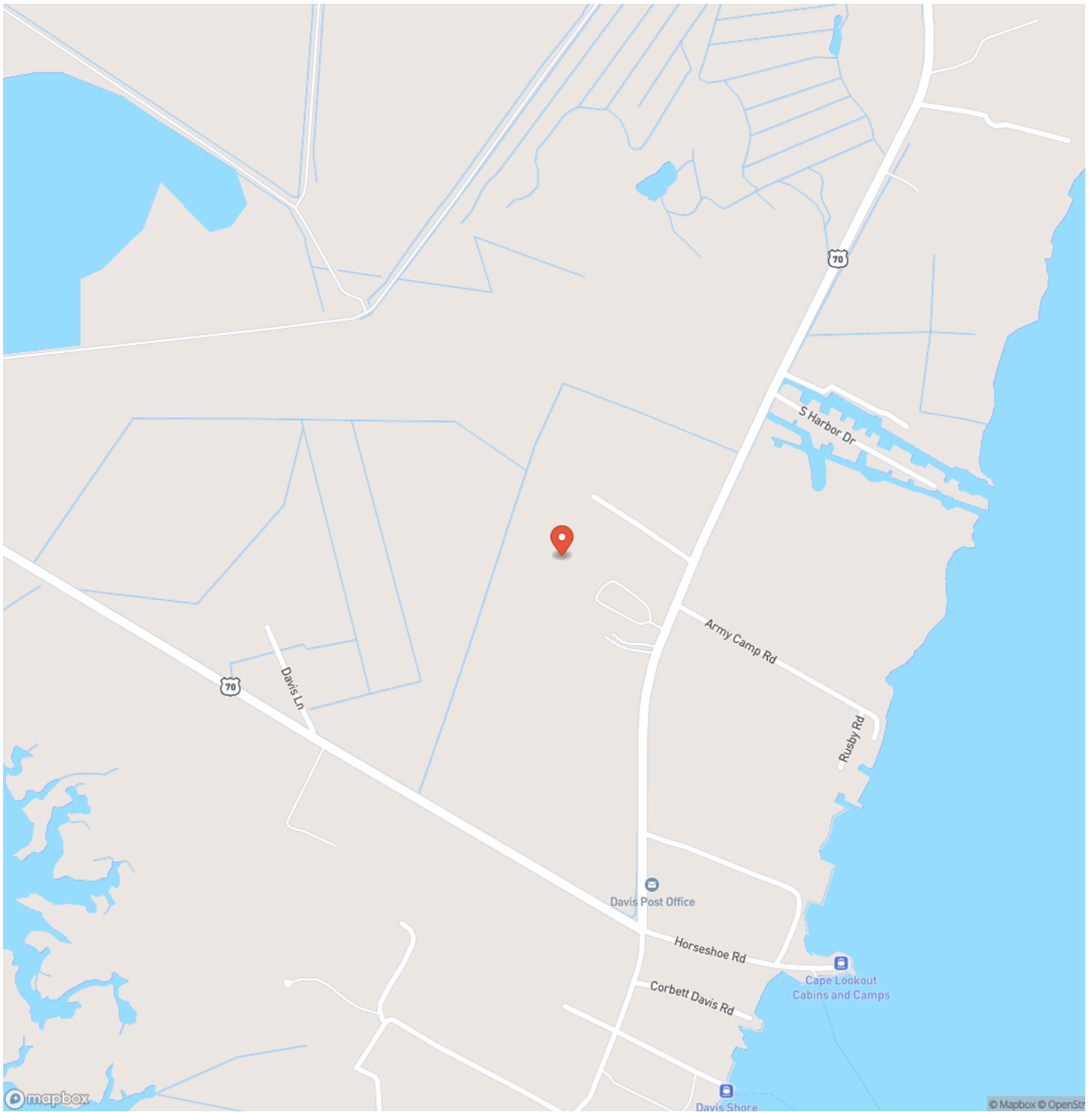
**Call Andrew Walters at [252-904-3184](tel:252-904-3184) or Chase Furlough at [252-505-6893](tel:252-505-6893) to schedule a showing today!**

For more information on this and other land for sale in Carteret County, contact Andrew Walters at [252-904-3184](tel:252-904-3184) or by email at [awalters@mossyoakproperties.com](mailto:awalters@mossyoakproperties.com), or visit [landandfarmsrealty.com](http://landandfarmsrealty.com).

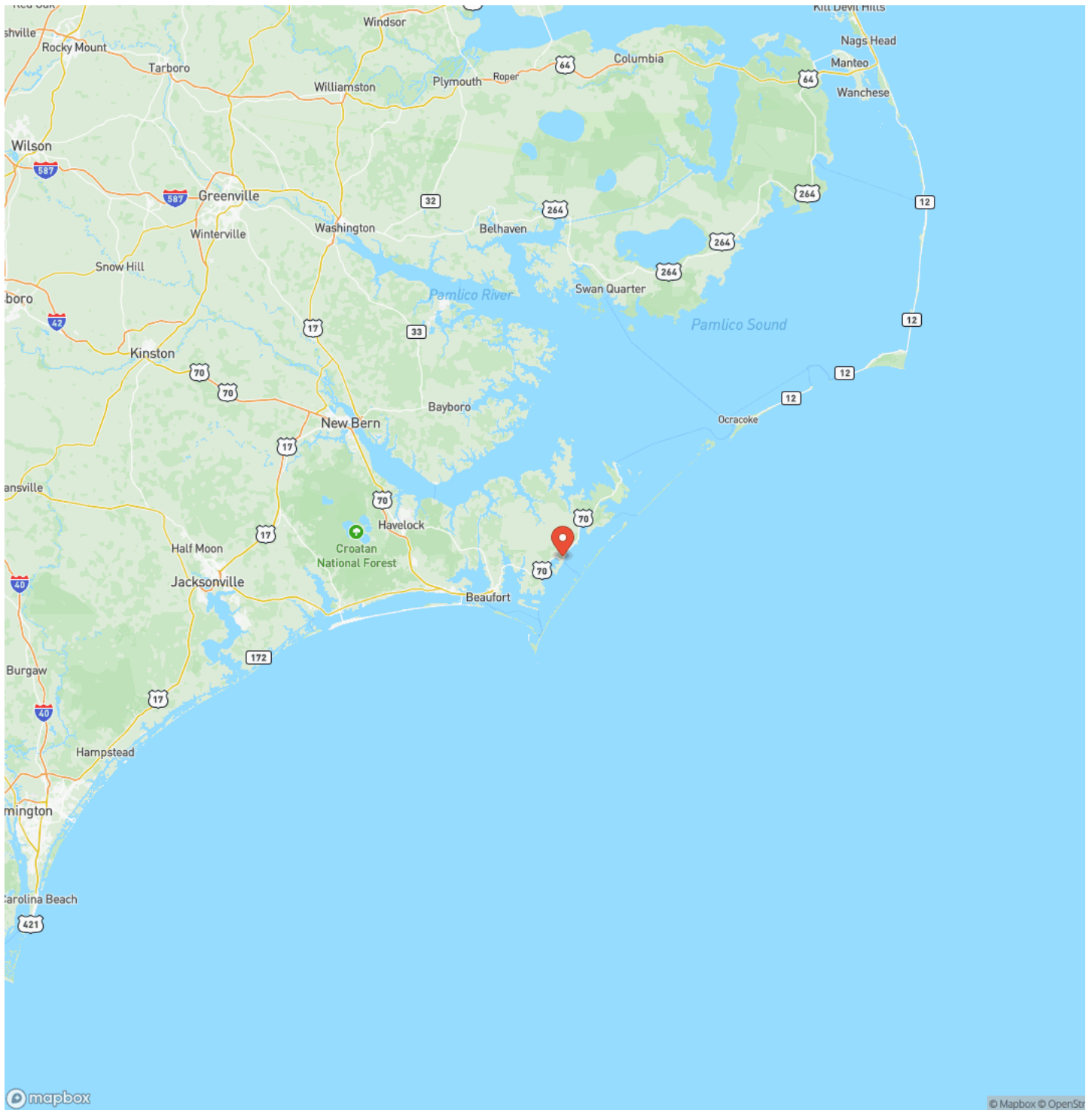
**UPDATED!! Luxury Estate and Outdoor Retreat on Acreage for sale in Carteret County, NC!  
Davis, NC / Carteret County**



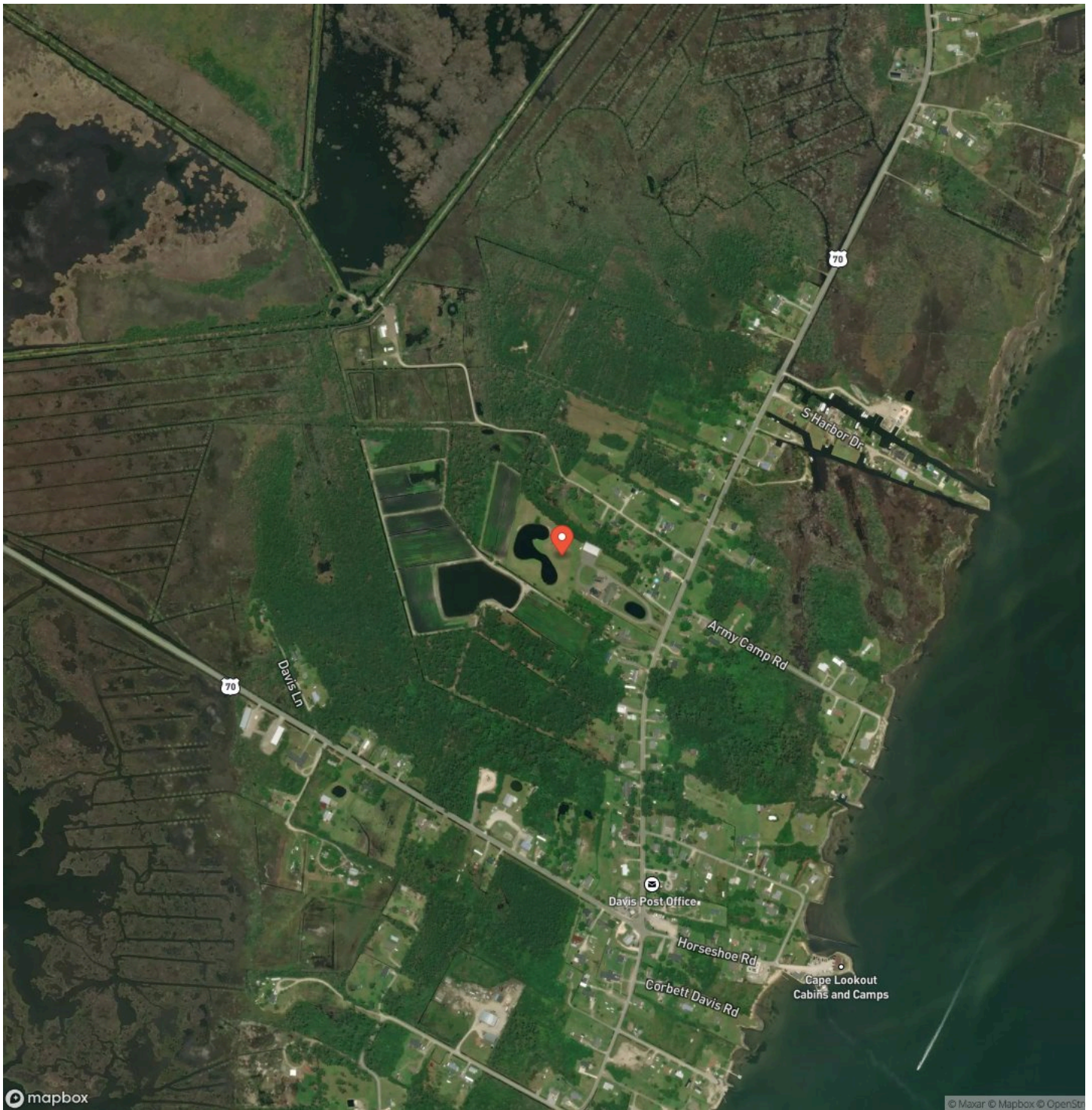
## Locator Map



## Locator Map



## Satellite Map







## **DISCLAIMERS**

Information in this brochure is provided solely for information purposes and does not constitute an offer to sell or advertise real estate outside the states in which broker or agent licensed. The information presented has been obtained from sources deemed to be reliable, but is not guaranteed or warranted by the agent, broker, or the sellers of these properties. This offering is subject to errors, omissions, prior sale, price change, correction or withdrawal from the market without notice. All references to age, square footage, income, expenses, acreage, carrying capacity, and land classification, etc. are approximate. Prospective buyers are chargeable with and expected to conduct their own independent investigation of the information and the property and to rely only on those results. Sellers reserve the right to accept or reject any and all offers without liability to any buyer or cooperating broker.

Maps are provided for illustration purposes only, the accuracy is not warranted. Parcels on interactive maps are not adjusted to match aerial backgrounds. This information is for reference purposes only and is not a legal document. Data maps contain errors. The seller and seller's agent are making known to all potential buyers that there may be variations between the location of the existing fence lines and the legal description of the deeded property. Seller and seller's agent make no warranties with regard to the location of the fence lines in relationship to the deeded property lines, nor does the Seller make any warranties or representations with regard to the specific acreage contained within the fenced property lines. Seller is selling the property in an "as is" condition, which includes the location of the fences as they exist. Boundaries shown on the accompanying maps are approximate, based on county parcel data. The maps are not to scale. The accuracy of the maps is not guaranteed. Prospective buyers are encouraged to verify fence lines, deeded property lines and acreages using a licensed surveyor at their own expense.



---

**Mossy Oak Properties Land and Farms Realty**  
101 Budleigh Street, Suite F  
Manteo, NC 27954  
(844) 480-5263  
<https://www.mossoakproperties.com/>

---

