

Boggy Creek East
99 MC 206
Fouke, AR 71837

\$119,900
16.210± Acres
Miller County



Boggy Creek East
Fouke, AR / Miller County

SUMMARY

Address

99 MC 206

City, State Zip

Fouke, AR 71837

County

Miller County

Type

Hunting Land, Recreational Land, Lot, Timberland

Latitude / Longitude

33.239122 / -93.84271

Acreage

16.210

Price

\$119,900

Property Website

<https://www.mossoakproperties.com/property/boggy-creek-east-miller-arkansas/103425/>



Boggy Creek East

Fouke, AR / Miller County

PROPERTY DESCRIPTION

Escape to your own private retreat at Boggy Creek East, a remarkable 16.21-acre property offering an exceptional blend of natural beauty and recreational opportunity in Miller County, Arkansas. Located just minutes from Fouke and access to Interstate 49 the property provides quiet country living possibilities with easy access to all the big city amenities available in Texarkana. This expansive tract is a haven for outdoor enthusiasts, promising thrilling hunting expeditions, serene recreational pursuits, and the potential for a peaceful residential escape. Imagine endless possibilities on land that truly embodies the spirit of the Arkansas wilderness.

Location

Nestled within Miller County, Arkansas, this property enjoys a prime location in the charming community of Fouke. It offers the perfect balance of rural tranquility and convenient access, allowing residents and visitors alike to immerse themselves in nature while remaining connected to local amenities.

Land and terrain

Spanning 16.21 acres, the land presents a diverse and captivating landscape. Buyers will appreciate the freedom to explore and shape this natural canvas to suit their vision, whether for recreational endeavors or a future homesite. The varied terrain offers an engaging environment for all types of outdoor activities.

Improvements and infrastructure

The property currently embraces its natural state, providing a blank slate for future owners to personalize and develop according to their desires. This presents an outstanding opportunity to design and implement infrastructure that perfectly complements your vision, from rustic cabins to modern homes.

Water and utilities

Enjoy the calming presence of a natural creek, offering a delightful water feature and potential for various recreational activities. Regarding utilities, the property offers access to electricity, highspeed internet and a well already on-site allowing ease of connections that best suit their development plans, ensuring modern comforts can be integrated seamlessly.

Wildlife and vegetation

Boggy Creek East is a vibrant ecosystem, teeming with diverse wildlife, including Hogs, Small Game, Turkey, and majestic Whitetail Deer, making it an ideal spot for hunting and wildlife observation. The property is characterized by its Natural State vegetation, providing a rich and thriving habitat for local fauna and a picturesque backdrop for all activities.

Current and potential use

Currently cherished for its exceptional Hunting and Recreational opportunities, this versatile acreage also holds significant potential for a Residential dwelling. Envision creating your dream home amidst nature, or continuing to enjoy the land for its superb ATV Trails, Fishing, and hunting prospects.

Access and easements

Access to this property is straightforward and convenient, featuring frontage on County Road 206 with an Asphalt surface. This ensures easy year-round entry, allowing for seamless enjoyment of all the property has to offer without concerns about difficult terrain.

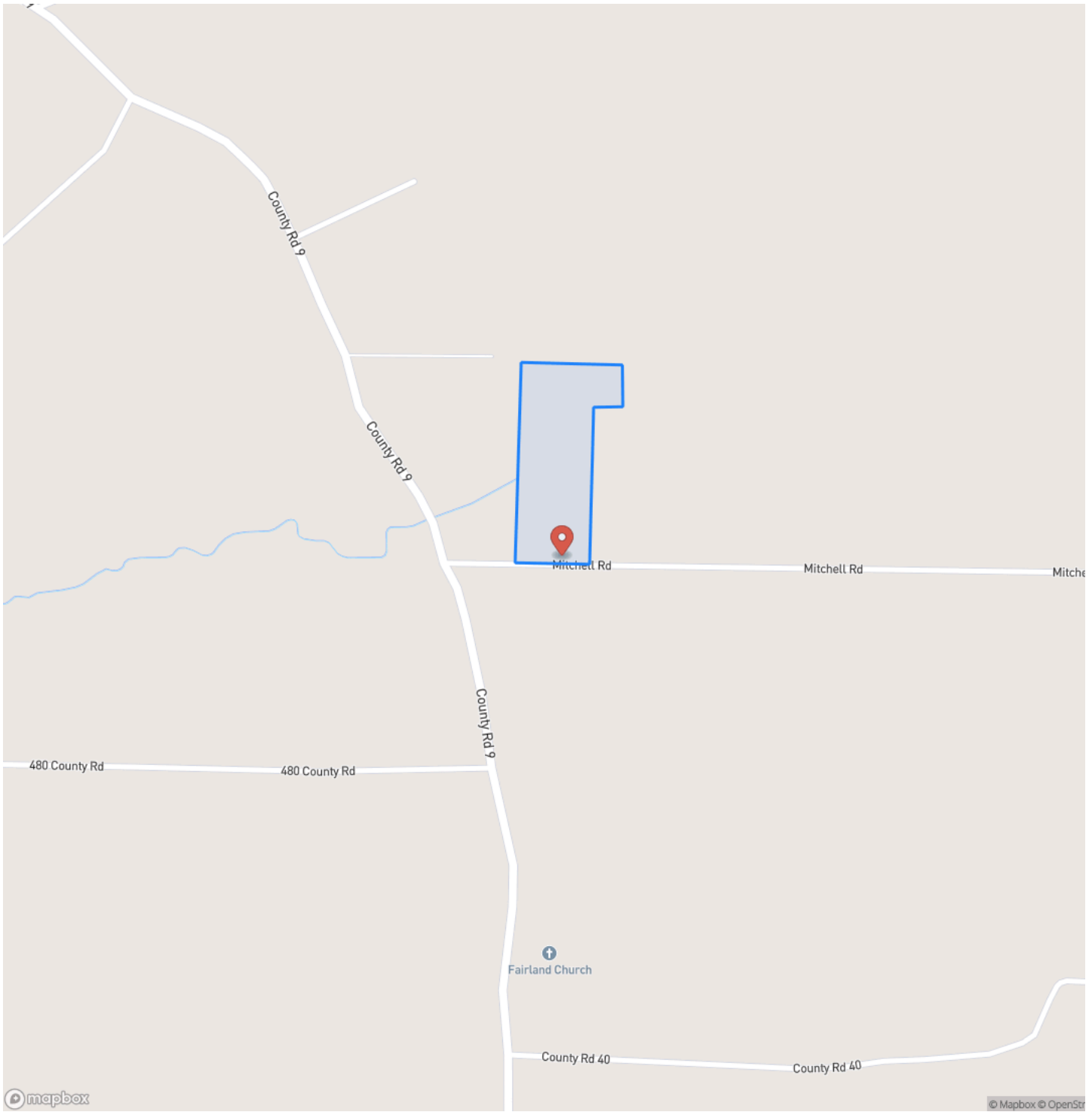
Showing instructions and contact

Contact us today to learn more or to schedule a visit and experience the allure of Boggy Creek East for yourself.

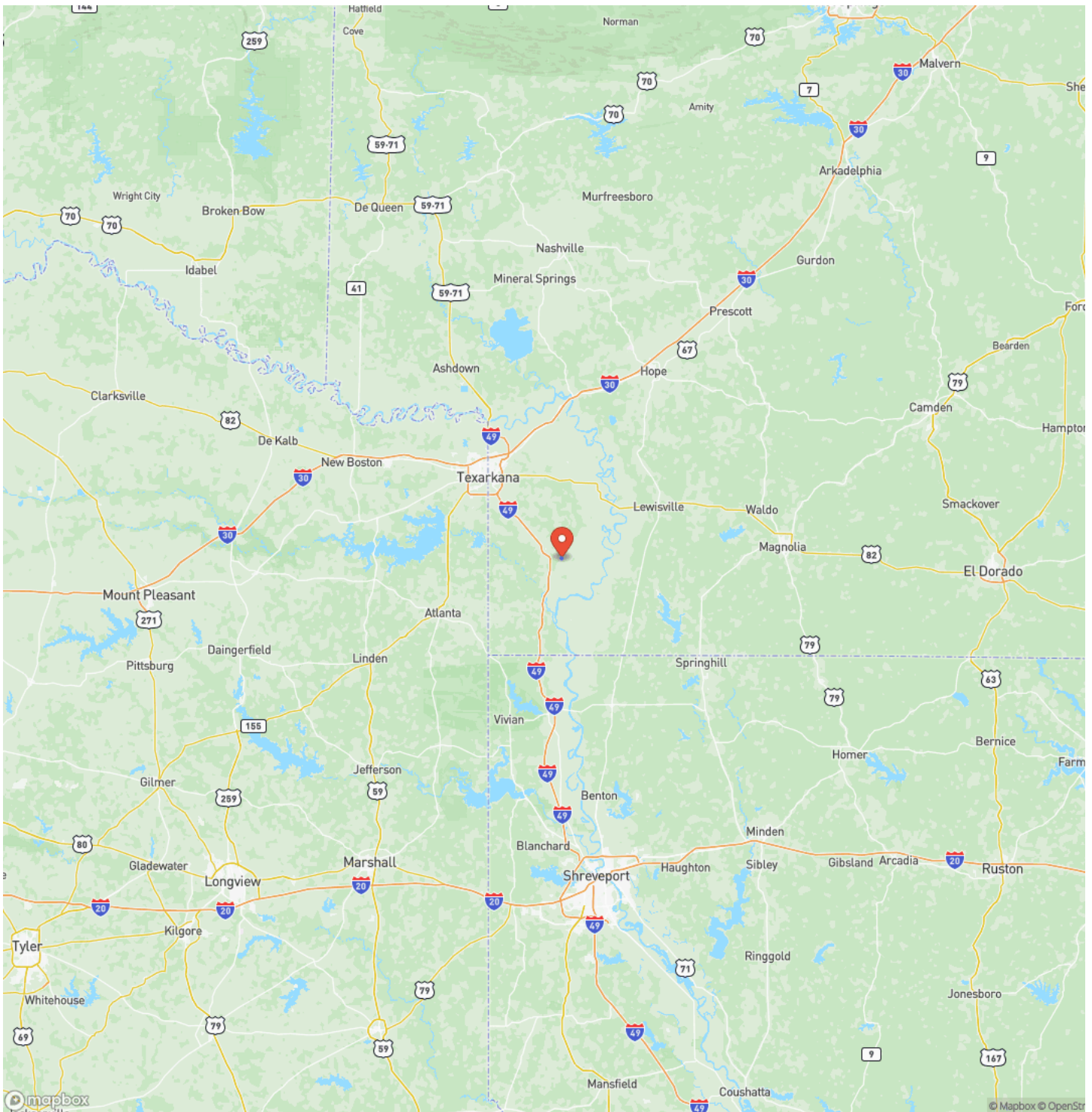
Boggy Creek East
Fouke, AR / Miller County



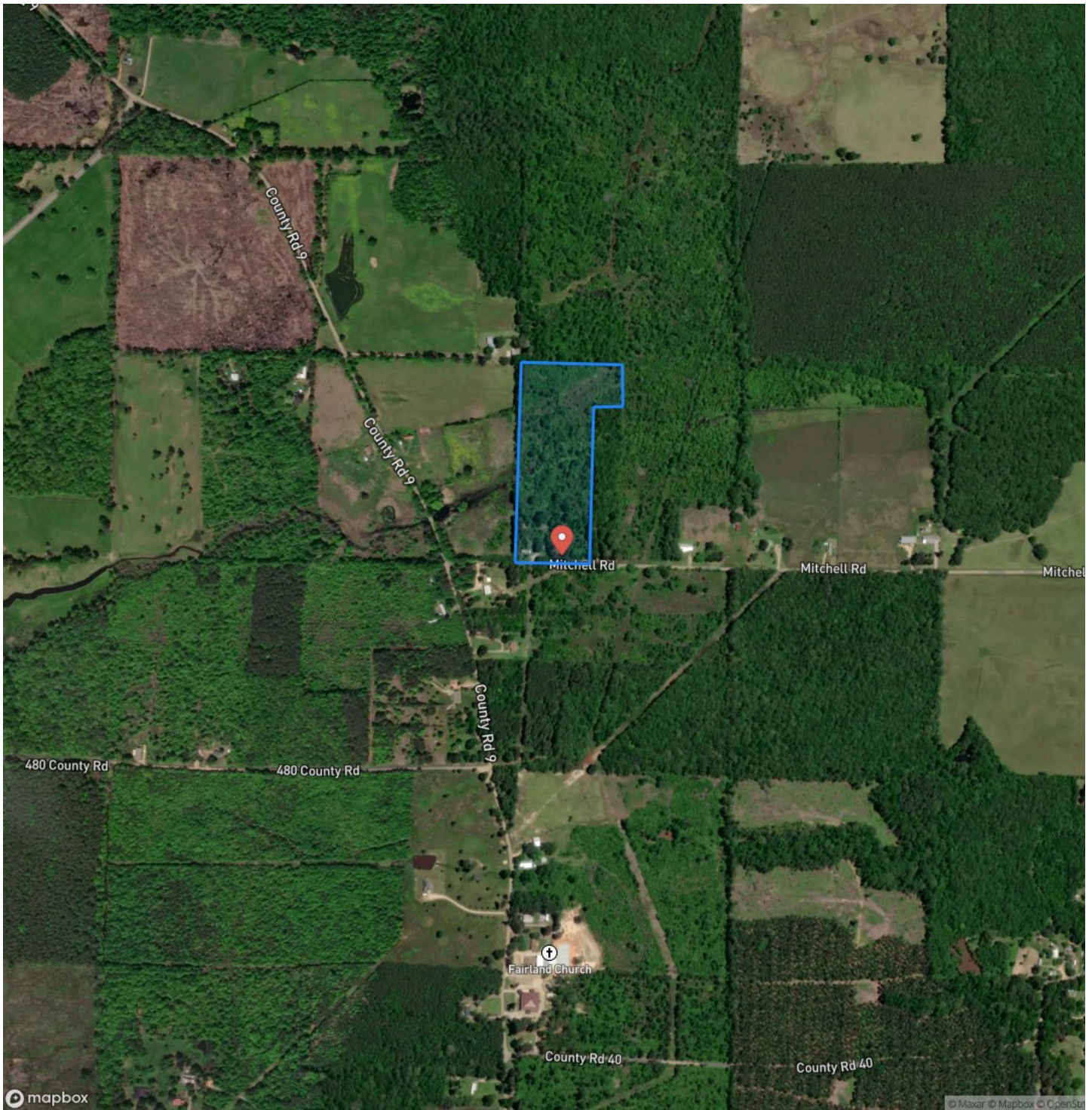
Locator Map



Locator Map



Satellite Map



DISCLAIMERS

Neither the seller, Mossy Oak Properties Land & Home (MOPLH), their subsidiaries, affiliates nor representatives warrant the accuracy, adequacy or completeness of any information contained herein regarding the property, its condition, boundaries, access, acreage, or timber stand information. Maps, timber evaluations and all information contained herein is provided "AS IS," as a courtesy to potential buyers. Potential buyers should make their own determination regarding the accuracy of the information provided. Potential buyer's agent(s) must be identified on first contact with MOPLH and must accompany the potential buyer on showings to receive full fee participation. Otherwise, the fee participation will be at the sole discretion of MOPLH. All property is subject to change, withdrawal, or prior sale. MOPLH expressly disclaims liability for errors or omissions and does not assume liability for typographical errors, misprints, nor for misinformation that may have been given to us.

Any person viewing this marketing material is considered a prospective buyer for the subject property. Should a prospective buyer or its agents choose to inspect the property, they do so at their own risk and assume all liability and shall indemnify Seller and its agents against any and all claims, demands or causes of action, of every kind, nature and description relating to its access to or presence on the property.

Mossy Oak Properties Land and Home
819 Lakewood Road
Camden, AR 71701
(870) 807-6731
<https://moplandandhome.realstackweb.com/>

