

Redfield  
Patsy Road  
Redfield, AR 72132

**\$18,000**  
3.730± Acres  
Jefferson County



**Redfield**  
**Redfield, AR / Jefferson County**

---

**SUMMARY**

**Address**

Patsy Road

**City, State Zip**

Redfield, AR 72132

**County**

Jefferson County

**Type**

Hunting Land, Recreational Land, Lot, Undeveloped Land

**Latitude / Longitude**

34.389079 / -92.098006

**Acreage**

3.730

**Price**

\$18,000

**Property Website**

<https://www.mossoakproperties.com/property/redfield-jefferson-arkansas/103239/>



## **PROPERTY DESCRIPTION**

Uncover the possibilities with this remarkable 3.73-acre tract near Redfield, Arkansas, a heavily wooded sanctuary perfect for outdoor enthusiasts and those seeking a private escape. Imagine the thrill of prime hunting grounds right in your backyard, teeming with whitetail deer, turkey, and hogs. This versatile property offers an exceptional blend of recreational opportunities and the freedom to craft your ideal rural retreat.

### **Location**

Nestled in the heart of Jefferson County, this property enjoys the peaceful ambiance of Redfield, Arkansas. Its strategic location provides a desirable balance of rural tranquility and convenient access to local amenities, making it an ideal setting for both weekend getaways and potential permanent residence.

### **Land and terrain**

Spanning 3.73 acres, this parcel is characterized by its heavily wooded landscape, offering a natural canopy and a sense of secluded privacy. The varied terrain provides an engaging environment for exploration and can be shaped to suit a multitude of outdoor activities or building endeavors.

### **Improvements and infrastructure**

This undeveloped land presents a blank canvas, inviting you to design and implement improvements tailored precisely to your vision. Whether your plans include a rustic cabin, a hunting lodge, or a private residence, the property awaits your personal touch.

### **Water and utilities**

Future owners will appreciate the flexibility to establish their preferred water source and utility connections. The absence of existing infrastructure means you have the freedom to choose systems that align with your specific needs and environmental preferences, ensuring a custom fit for your property.

### **Wildlife and vegetation**

The property is a haven for wildlife, boasting a robust population of whitetail deer, turkey, and hogs, making it a hunter's paradise. Its heavily wooded nature provides ample cover and a rich habitat for these species, ensuring a vibrant natural ecosystem.

### **Current and potential use**

Currently an exceptional piece of hunting and recreational land, this property offers immense potential for various uses. Envision it as a private estate, a family compound, or continue to enjoy its superb recreational attributes. The flexibility of this undeveloped lot allows for a wide array of future possibilities.

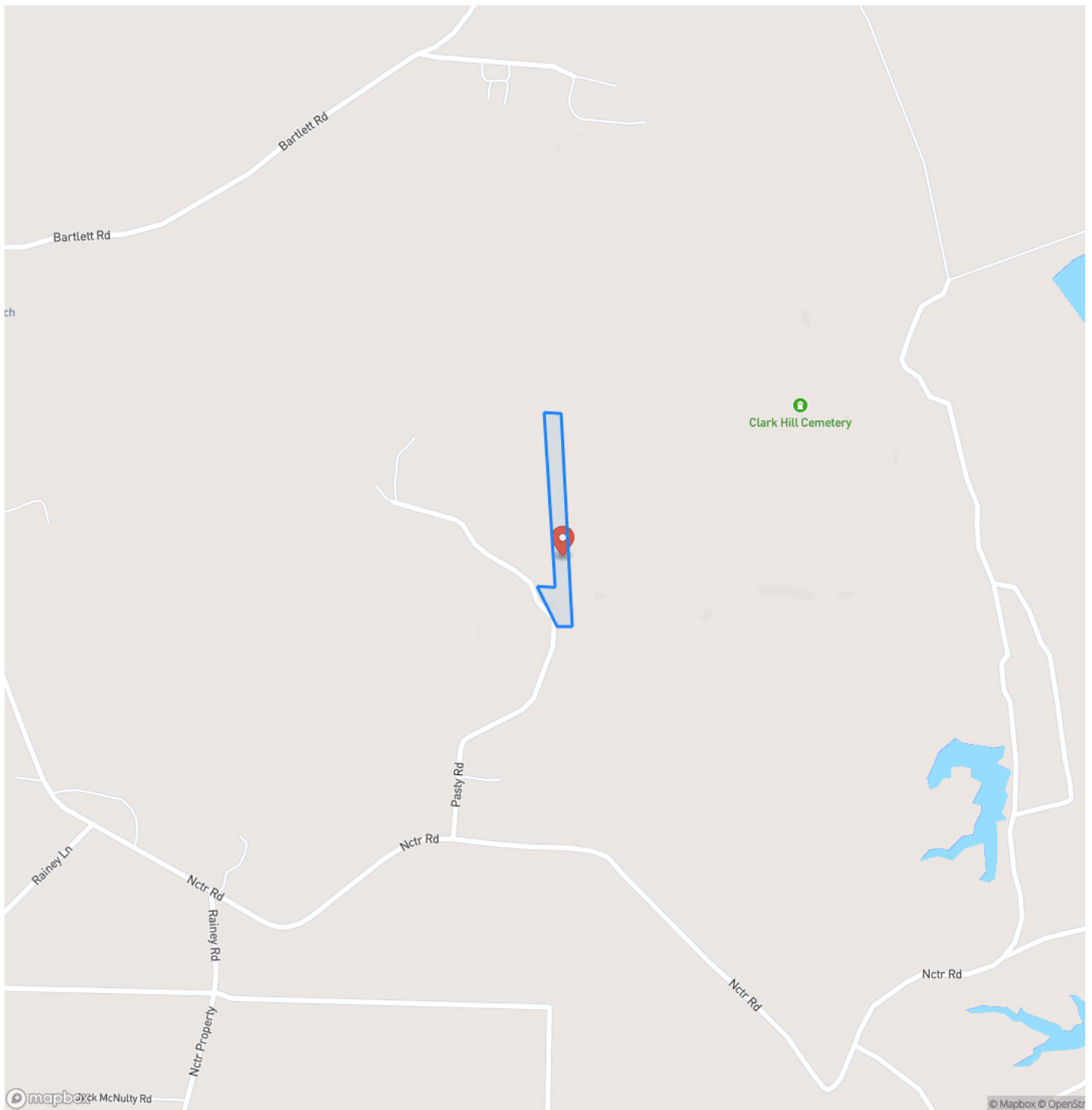
### **Access and easements**

Access to this property is well-established via a county road, featuring a gravel surface that ensures year-round navigability. This convenient road frontage simplifies entry and exit, providing ease of access for all your property needs.

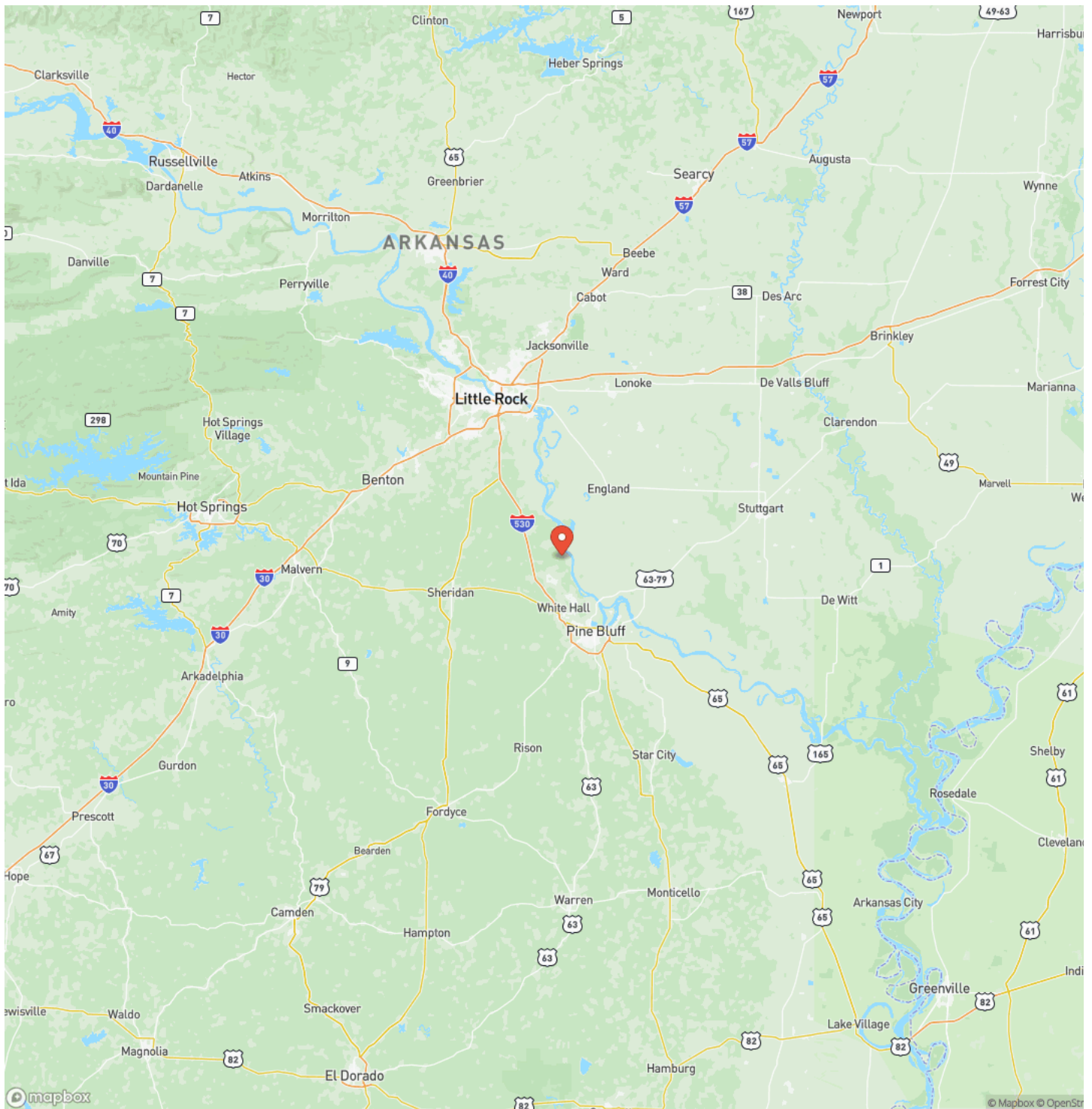
Redfield  
Redfield, AR / Jefferson County



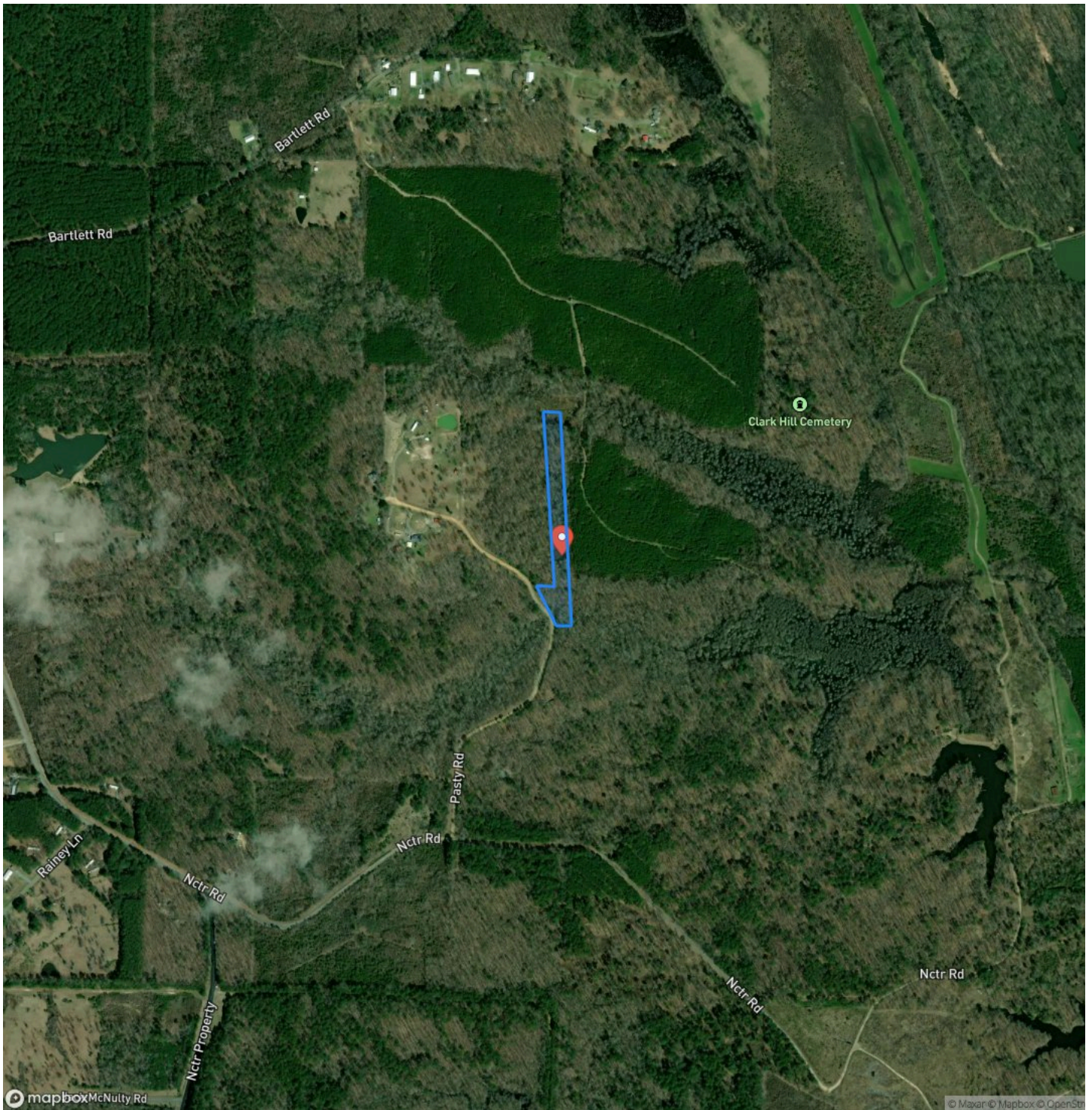
# Locator Map



# Locator Map



## Satellite Map







## **DISCLAIMERS**

Neither the seller, Mossy Oak Properties Land & Home (MOPLH), their subsidiaries, affiliates nor representatives warrant the accuracy, adequacy or completeness of any information contained herein regarding the property, its condition, boundaries, access, acreage, or timber stand information. Maps, timber evaluations and all information contained herein is provided "AS IS," as a courtesy to potential buyers. Potential buyers should make their own determination regarding the accuracy of the information provided. Potential buyer's agent(s) must be identified on first contact with MOPLH and must accompany the potential buyer on showings to receive full fee participation. Otherwise, the fee participation will be at the sole discretion of MOPLH. All property is subject to change, withdrawal, or prior sale. MOPLH expressly disclaims liability for errors or omissions and does not assume liability for typographical errors, misprints, nor for misinformation that may have been given to us.

Any person viewing this marketing material is considered a prospective buyer for the subject property. Should a prospective buyer or its agents choose to inspect the property, they do so at their own risk and assume all liability and shall indemnify Seller and its agents against any and all claims, demands or causes of action, of every kind, nature and description relating to its access to or presence on the property.



---

**Mossy Oak Properties Land and Home**  
819 Lakewood Road  
Camden, AR 71701  
(870) 807-6731  
<https://moplandandhome.realstackweb.com/>

---

