

White Farm
953 White Road
Huttig, AR 71747

\$174,900
40± Acres
Union County



White Farm
Huttig, AR / Union County

SUMMARY

Address

953 White Road

City, State Zip

Huttig, AR 71747

County

Union County

Type

Hunting Land, Recreational Land, Residential Property,
Timberland, Single Family

Latitude / Longitude

33.056705 / -92.31107

Taxes (Annually)

408

Dwelling Square Feet

1922

Bedrooms / Bathrooms

3 / 2

Acreage

40

Price

\$174,900

Property Website

<https://www.mossyoakproperties.com/property/white-farm-union-arkansas/86914/>



PROPERTY DESCRIPTION

40 Acres – Timberland Retreat with Cypress Lodge | South Union County, AR

Discover your own private retreat nestled in the heart of South Union County, Arkansas—just minutes from the renowned Felsenthal National Wildlife Refuge and the Arkansas/Louisiana line. This rare 40-acre property offers a mix of natural beauty and income potential, with **merchantable pine timber stands** ready for harvest.

Ideal for hunters and nature lovers alike, the land includes **established hunting blinds and stands**, a **stream-fed pond**, and abundant wildlife. Whether you're looking for a weekend getaway, a recreational paradise, or a long-term timber investment, this secluded property checks all the boxes.

At the heart of the property sits a **charming 3-bedroom, 2-bath cypress lodge**, perfect for hosting family adventures or peaceful escapes. The lodge offers rustic warmth with modern comforts, surrounded by serene woods and the sounds of nature. Ready to move in with a full winter's supply of firewood already cut and stacked and a garden spot ready for the tiller next spring.

Key Features:

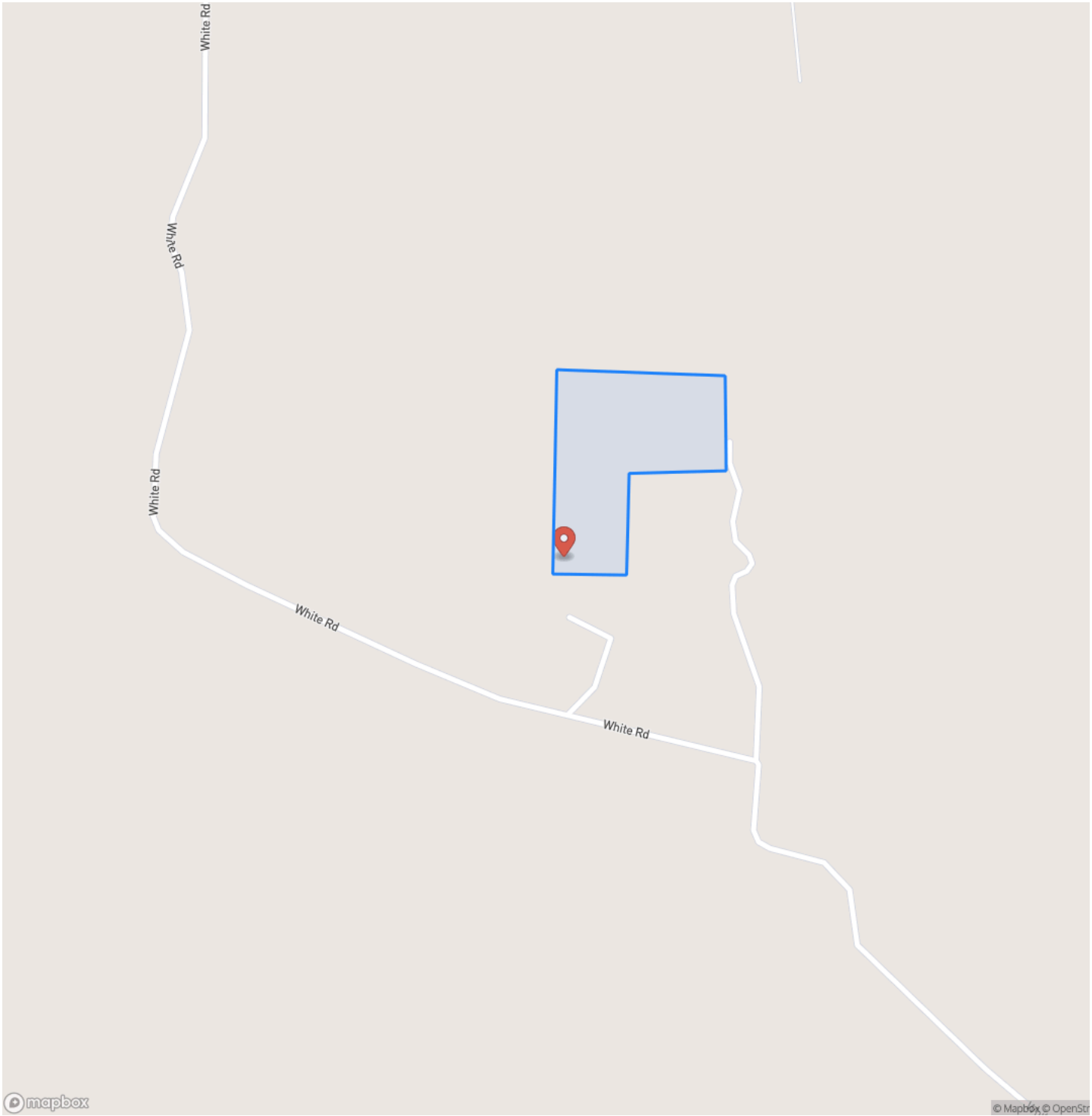
- 40 acres of timberland with merchantable pine
- Established hunting setup (blinds & stands)
- Secluded setting with private pond
- 3BR/2BA cedar lodge – fully functional and move-in ready
- Close proximity to Felsenthal National Wildlife Refuge

Don't miss this opportunity to own a versatile property offering recreation, relaxation, and revenue—all in one. Contact us today to schedule your private tour.

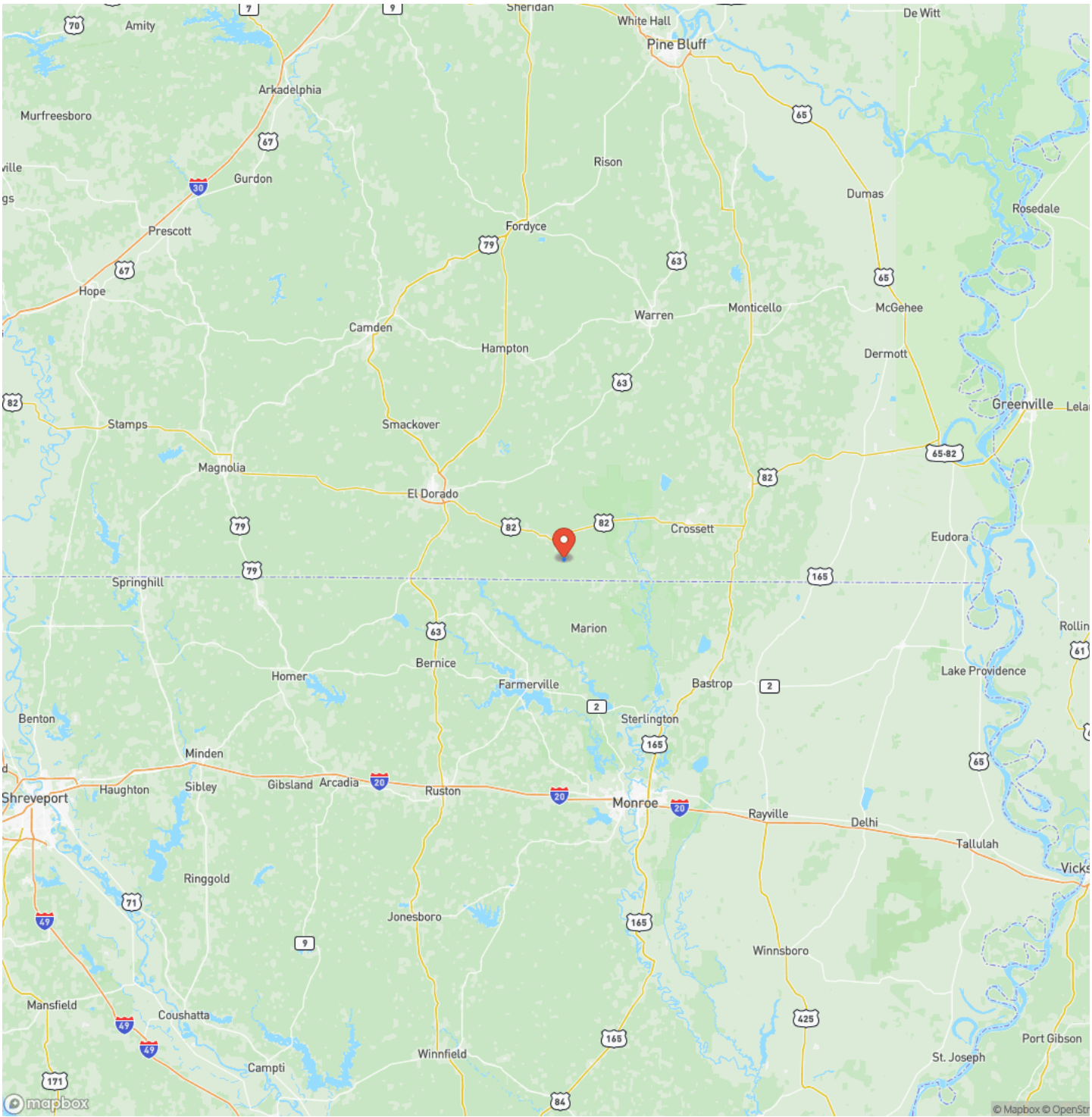
White Farm
Huttig, AR / Union County



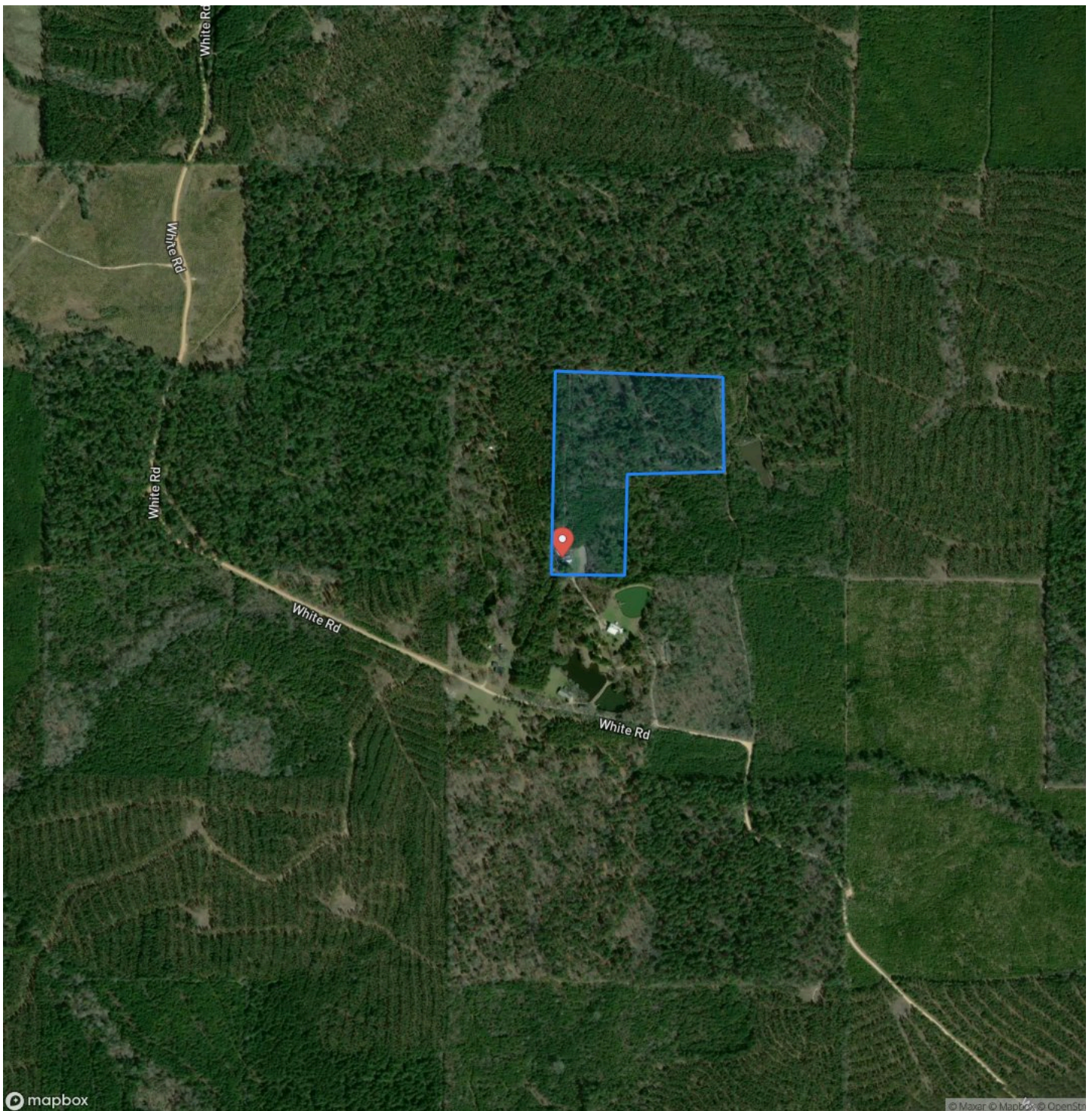
Locator Map



Locator Map



Satellite Map



LISTING REPRESENTATIVE

For more information contact:



Representative

Michael Clayton

Mobile

(870) 818-5418

Office

(870) 807-6731

Email

mclayton@mossyoakproperties.com

Address

819 Lakewood Road

City / State / Zip

NOTES

[illegible]

This image shows a single sheet of white paper with horizontal ruling lines. The lines are evenly spaced and run across the width of the page. There are no margins, text, or other markings on the paper.



MORE INFO ONLINE:
MossyOakProperties.com

DISCLAIMERS

Neither the seller, Mossy Oak Properties Land & Home (MOPLH), their subsidiaries, affiliates nor representatives warrant the accuracy, adequacy or completeness of any information contained herein regarding the property, its condition, boundaries, access, acreage, or timber stand information. Maps, timber evaluations and all information contained herein is provided "AS IS," as a courtesy to potential buyers. Potential buyers should make their own determination regarding the accuracy of the information provided. Potential buyer's agent(s) must be identified on first contact with MOPLH and must accompany the potential buyer on showings. Selling brokerages must have an executed Buyer agency agreement prior to contact with listing agent/brokerage, which spells out specifically selling brokerage commission source. Co-brokerage agreements between listing and selling brokerage are required to verify any commission split. Otherwise, the fee participation will be at the sole discretion of MOPLH. All property is subject to change, withdrawal, or prior sale. MOPLH expressly disclaims liability for errors or omissions and does not assume liability for typographical errors, misprints, nor for misinformation that may have been given to us.

Any person viewing this marketing material is considered a prospective buyer for the subject property. Should a prospective buyer or its agents choose to inspect the property, they do so at their own risk and assume all liability and shall indemnify Seller and its agents against any and all claims, demands or causes of action, of every kind, nature and description relating to its access to or presence on the property.

Mossy Oak Properties Land and Home
819 Lakewood Road
Camden, AR 71701
(870) 807-6731
MossyOakProperties.com
