

**5.00+/-acres on South Pittsburg Mtn with scenic views
and outdoor paradise**
Tract 4 South Pittsburg Mtn Road
South Pittsburg, TN 37380

\$95,000
5± Acres
Marion County



5.00+/- acres on South Pittsburg Mtn with scenic views and outdoor paradise
South Pittsburg, TN / Marion County

SUMMARY

Address

Tract 4 South Pittsburg Mtn Road

City, State Zip

South Pittsburg, TN 37380

County

Marion County

Type

Undeveloped Land

Latitude / Longitude

35.042301 / -85.839108

Acreage

5

Price

\$95,000

Property Website

<https://www.mossyoakproperties.com/property/5-00-acres-on-south-pittsburg-mtn-with-scenic-views-and-outdoor-paradise-marion-tennessee/99167/>



5.00+/-acres on South Pittsburg Mtn with scenic views and outdoor paradise

South Pittsburg, TN / Marion County

PROPERTY DESCRIPTION

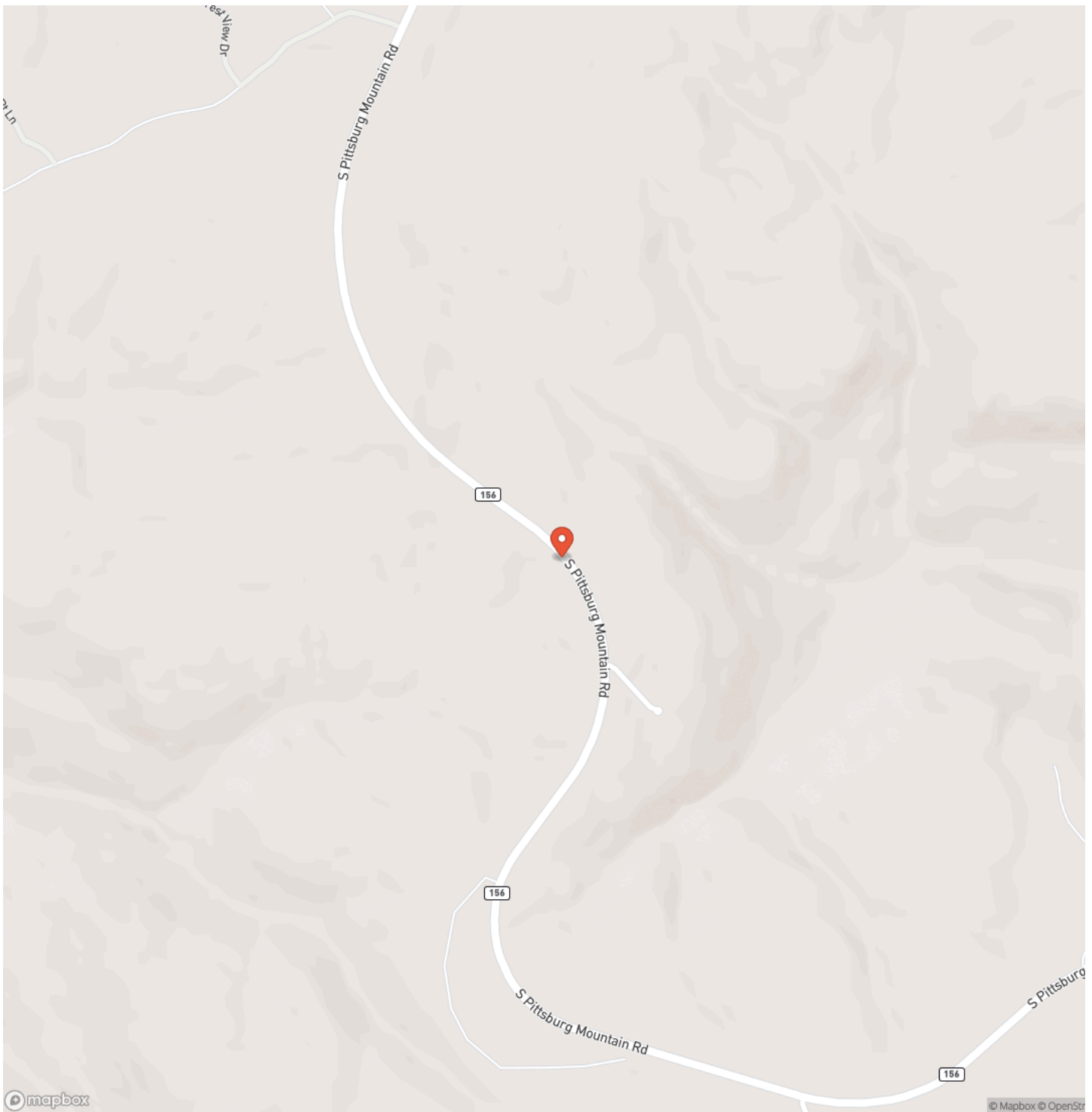
5.00+/-acres on South Pittsburg Mtn with scenic views and outdoor paradise. Discover the perfect blend of privacy and recreation with this beautiful 5.00+/-acre wooded tract atop South Pittsburg Mountain. Enjoy breathtaking scenic mountain views overlooking Sherwood Valley, offering a peaceful setting to build your dream home or weekend retreat. This property is rich with wildlife, including deer and turkey, making it ideal for nature lovers and hunting enthusiasts. Located just 1 mile from Franklin State Forest, you'll have a convenient access to thousands of acres for hunting, hiking, and year-round outdoor exploration. Love the water? The Tennessee River is only 12 miles away, providing excellent fishing and boating opportunities. Golf Enthusiasts will appreciate being just a short drive to Sewanee Golf Club in Sewanee TN, home to The University of the South, along with several charming local restaurants and dining options. Whether you're looking for a private getaway or future homesite surrounded by natural beauty, this mountain property offers it all. This property is only 40 minutes from Chattanooga TN. ****Buyer is responsible to do their due diligence to verify that all information is correct

5.00+/- acres on South Pittsburg Mtn with scenic views and outdoor paradise
South Pittsburg, TN / Marion County



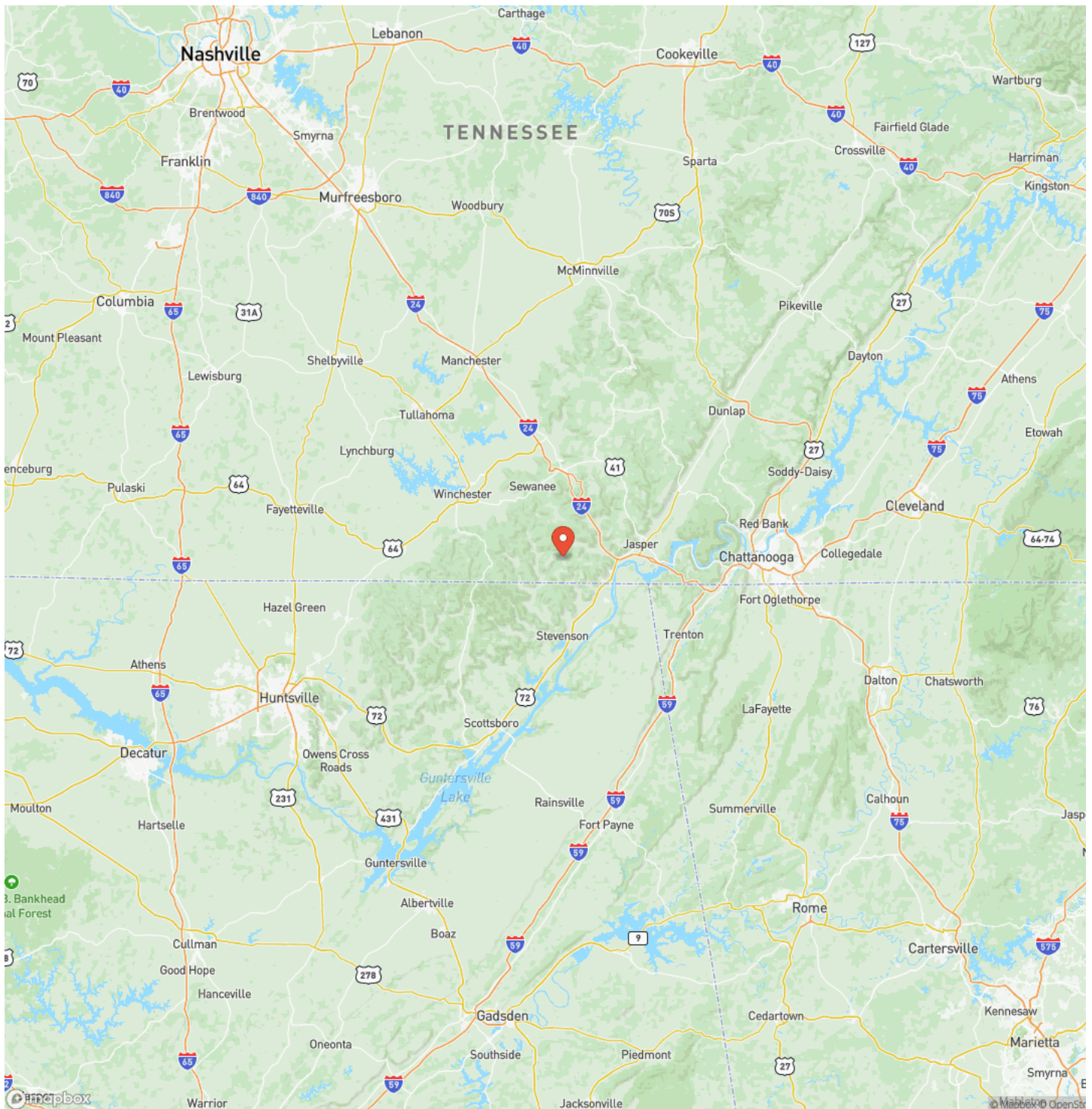
5.00+/- acres on South Pittsburg Mtn with scenic views and outdoor paradise
South Pittsburg, TN / Marion County

Locator Map



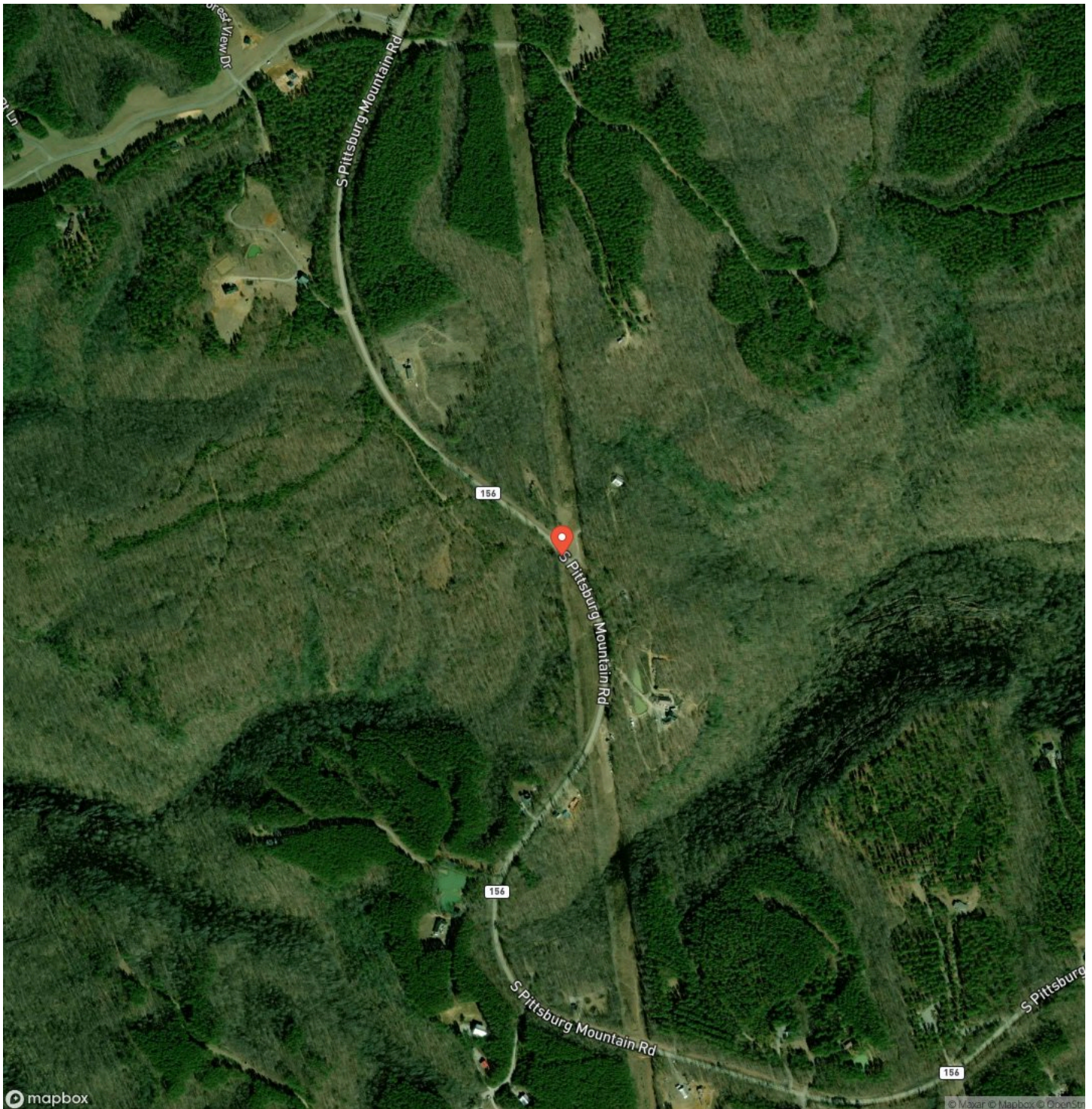
5.00+/- acres on South Pittsburg Mtn with scenic views and outdoor paradise
South Pittsburg, TN / Marion County

Locator Map



5.00+/- acres on South Pittsburg Mtn with scenic views and outdoor paradise
South Pittsburg, TN / Marion County

Satellite Map



5.00+/- acres on South Pittsburg Mtn with scenic views and outdoor paradise
South Pittsburg, TN / Marion County

LISTING REPRESENTATIVE
For more information contact:

Representative
Clint Carroll

Mobile
(423) 648-1008

Email
ccarroll@mossyoakproperties.com

Address
793 Main Street

City / State / Zip



NOTES

Notes section with multiple horizontal lines for text entry.

This image shows a single sheet of white paper with horizontal ruling lines. The lines are evenly spaced and run across the width of the page. There are no margins, text, or other markings on the paper.



MossyOakProperties.com

DISCLAIMERS

Information in this brochure is provided solely for information purposes and does not constitute an offer to sell or advertise real estate outside the states in which broker or agent licensed. The information presented has been obtained from sources deemed to be reliable, but is not guaranteed or warranted by the agent, broker, or the sellers of these properties. This offering is subject to errors, omissions, prior sale, price change, correction or withdrawal from the market without notice. All references to age, square footage, income, expenses, acreage, carrying capacity, and land classification, etc. are approximate. Prospective buyers are chargeable with and expected to conduct their own independent investigation of the information and the property and to rely only on those results. Sellers reserve the right to accept or reject any and all offers without liability to any buyer or cooperating broker.

Maps are provided for illustration purposes only, the accuracy is not warranted. Parcels on interactive maps are not adjusted to match aerial backgrounds. This information is for reference purposes only and is not a legal document. Data maps contain errors. The seller and seller's agent are making known to all potential buyers that there may be variations between the location of the existing fence lines and the legal description of the deeded property. Seller and seller's agent make no warranties with regard to the location of the fence lines in relationship to the deeded property lines, nor does the Seller make any warranties or representations with regard to the specific acreage contained within the fenced property lines. Seller is selling the property in an "as is" condition, which includes the location of the fences as they exist. Boundaries shown on the accompanying maps are approximate, based on county parcel data. The maps are not to scale. The accuracy of the maps is not guaranteed. Prospective buyers are encouraged to verify fence lines, deeded property lines and acreages using a licensed surveyor at their own expense.

Mossy Oak Properties Land Sales, LLC
793 Main Street
Kimball, TN 37347
(423) 648-1008
MossyOakProperties.com

