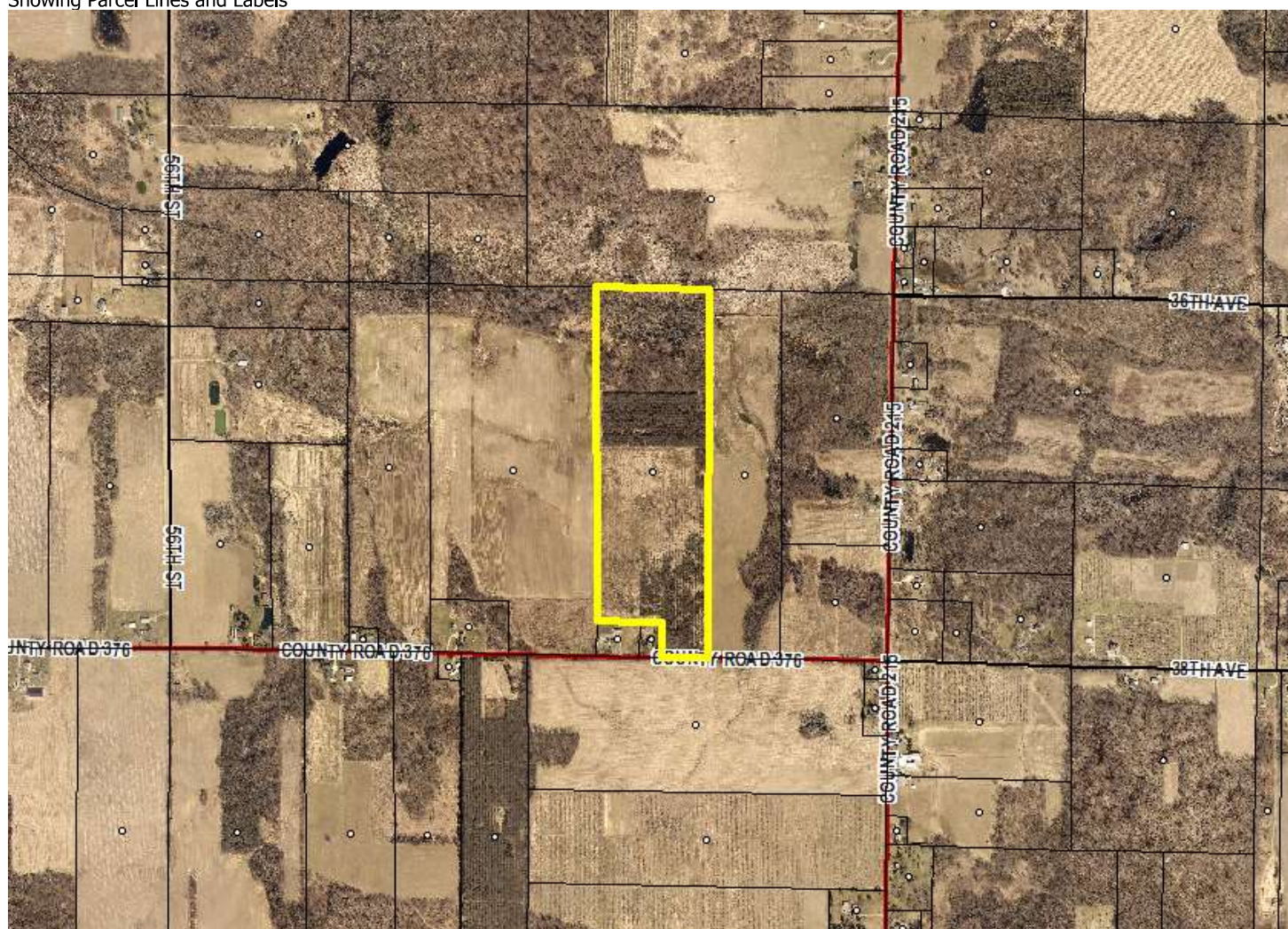


# 2018 ORTHO AERIAL MAPS Showing Parcel Lines and Labels



## 2018 Digital Orthophotographs

The original photographs displayed here were taken in the spring of 2018. The 'best resolution' of these images is 0.5 feet per pixel.

Digital ortho photography consists of images processed by computer to remove the distortions caused by tilt of the aircraft and topographic relief in the landscape. These images are properly scaled and located in the state plane coordinate system (NAD83) thus giving them similar characteristics of a map.

