

**13 acres Surveyed, 3 Bedroom, 2.5 Baths,
3.2 miles from Gasconade river access, 1
mile from Elk Creek access.
10801 Highway Z
Falcon, MO 65470**

\$218,300
13± Acres
Wright County



13 acres Surveyed, 3 Bedroom, 2.5 Baths, 3.2 miles from Gasconade river access, 1 mile from Elk Creek access.

Falcon, MO / Wright County

SUMMARY

Address

10801 Highway Z

City, State Zip

Falcon, MO 65470

County

Wright County

Type

Recreational Land, Residential Property, Single Family

Latitude / Longitude

36.9128834 / -93.8511235

Taxes (Annually)

80

Dwelling Square Feet

2077

Bedrooms / Bathrooms

3 / 2.5

Acreage

13

Price

\$218,300

Property Website

<https://mossyoakproperties.com/property/13-acres-surveyed-3-bedroom-2-5-baths-3-2-miles-from-gasconade-river-access-1-mile-from-elk-creek-access-wright-missouri/28630/>



13 acres Surveyed, 3 Bedroom, 2.5 Baths, 3.2 miles from Gasconade river access, 1 mile from Elk Creek access.

Falcon, MO / Wright County

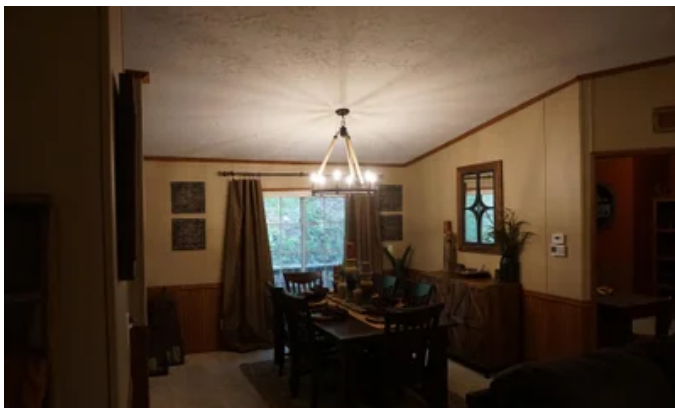
PROPERTY DESCRIPTION

Here it is Enjoy this surveyed 13 acres 3 Bedroom 2.5 Bath custom modular built on a permanent foundation with an open floor plan, central propane heat, newer central air, outside wood furnace, covered front porch, small spring, storage building and private drilled well. Property is all woods with marketable timber. Several signs of deer and turkey on the property . Property is located with-in approx. 3.2 miles from Gasconade river access, 1 mile from Elk Creek access, an hour to Lake Of The Ozarks, 1.5 hours to Bull Shoals or Norfork Lakes, 20 minutes to Hartville, 30 minutes to Lebanon, an hour to Springfield. Call [417-274-0142](tel:417-274-0142)



13 acres Surveyed, 3 Bedroom, 2.5 Baths, 3.2 miles from Gasconade river access, 1 mile from Elk Creek access.

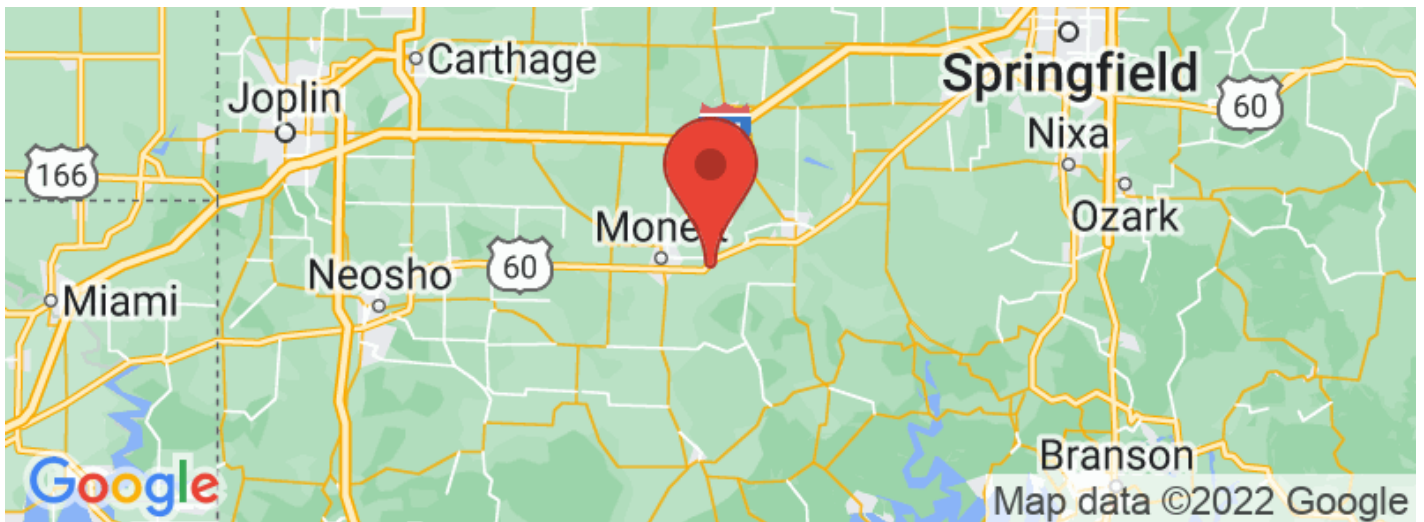
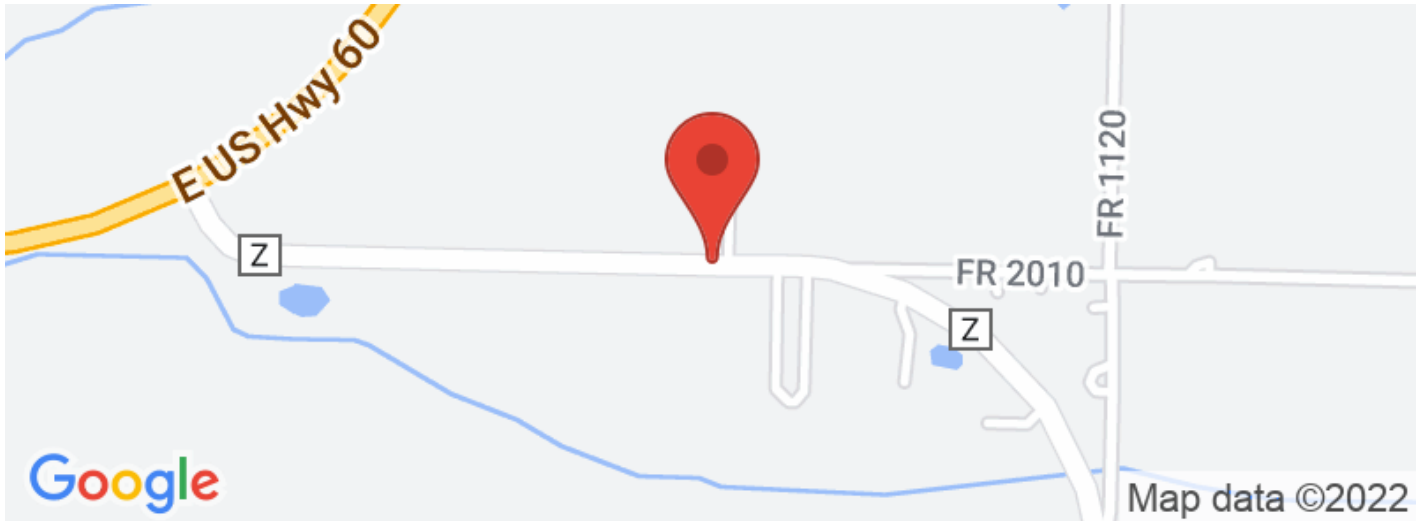
Falcon, MO / Wright County



13 acres Surveyed, 3 Bedroom, 2.5 Baths, 3.2 miles from Gasconade river access, 1 mile from Elk Creek access.

Falcon, MO / Wright County

Locator Maps



13 acres Surveyed, 3 Bedroom, 2.5 Baths, 3.2 miles from Gasconade river access, 1 mile from Elk Creek access.

Falcon, MO / Wright County

Aerial Maps



13 acres Surveyed, 3 Bedroom, 2.5 Baths, 3.2 miles from Gasconade river access, 1 mile from Elk Creek access.

Falcon, MO / Wright County

LISTING REPRESENTATIVE

For more information contact:



Representative

Linda Francis

Mobile

(417) 274-0142

Email

lfrancis@mossyoakproperties.com

Address

412 W US 60 Ste E

City / State / Zip

Mountain View, MO 65548

NOTES



NOTES

[illegible]

DISCLAIMERS

Information in this brochure is provided solely for information purposes and does not constitute an offer to sell or advertise real estate outside the states in which broker or agent licensed. The information presented has been obtained from sources deemed to be reliable, but is not guaranteed or warranted by the agent, broker, or the sellers of these properties. This offering is subject to errors, omissions, prior sale, price change, correction or withdrawal from the market without notice. All references to age, square footage, income, expenses, acreage, carrying capacity, and land classification, etc. are approximate. Prospective buyers are chargeable with and expected to conduct their own independent investigation of the information and the property and to rely only on those results. Sellers reserve the right to accept or reject any and all offers without liability to any buyer or cooperating broker.

Maps are provided for illustration purposes only, the accuracy is not warranted. Parcels on interactive maps are not adjusted to match aerial backgrounds. This information is for reference purposes only and is not a legal document. Data maps contain errors. The seller and seller's agent are making known to all potential buyers that there may be variations between the location of the existing fence lines and the legal description of the deeded property. Seller and seller's agent make no warranties with regard to the location of the fence lines in relationship to the deeded property lines, nor does the Seller make any warranties or representations with regard to the specific acreage contained within the fenced property lines. Seller is selling the property in an "as is" condition, which includes the location of the fences as they exist. Boundaries shown on the accompanying maps are approximate, based on county parcel data. The maps are not to scale. The accuracy of the maps is not guaranteed. Prospective buyers are encouraged to verify fence lines, deeded property lines and acreages using a licensed surveyor at their own expense.

MORE INFO ONLINE:

MossyOakProperties.com



Mossy Oak Properties Mozark Realty
947 N. Westwood Blvd.
Poplar Bluff, MO 63901
(573) 712-2252
MossyOakProperties.com

