

**4 Bed/2 Bath Walkout Unfinished Basement 0.88 acre  
lot, Corner Lot Howell County  
311 Cantrell  
Mountain View, MO 65548**

**\$299,000**  
**0.880± Acres**  
**Howell County**



**4 Bed/2 Bath Walkout Unfinished Basement 0.88 acre lot, Corner Lot Howell County  
Mountain View, MO / Howell County**

---

**SUMMARY**

**Address**

311 Cantrell

**City, State Zip**

Mountain View, MO 65548

**County**

Howell County

**Type**

Residential Property, Single Family

**Latitude / Longitude**

36.976718 / -91.706795

**Dwelling Square Feet**

3660

**Bedrooms / Bathrooms**

4 / 2

**Acreage**

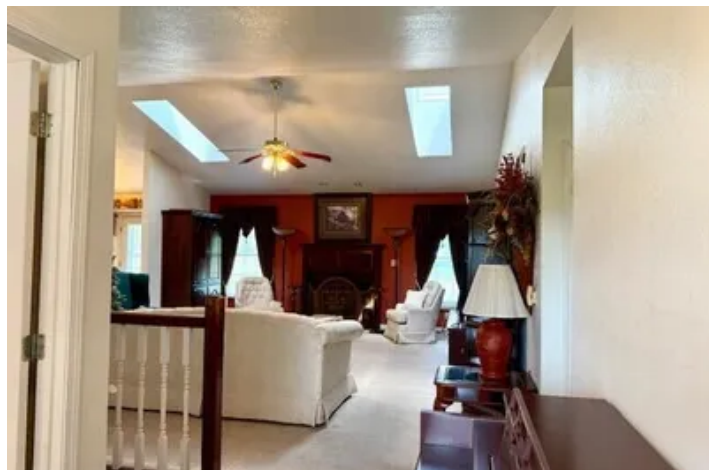
0.880

**Price**

\$299,000

**Property Website**

<https://mossyoakproperties.com/property/4-bed-2-bath-walkout-unfinished-basement-0-88-acre-lot-corner-lot-howell-county-howell-missouri/80730/>





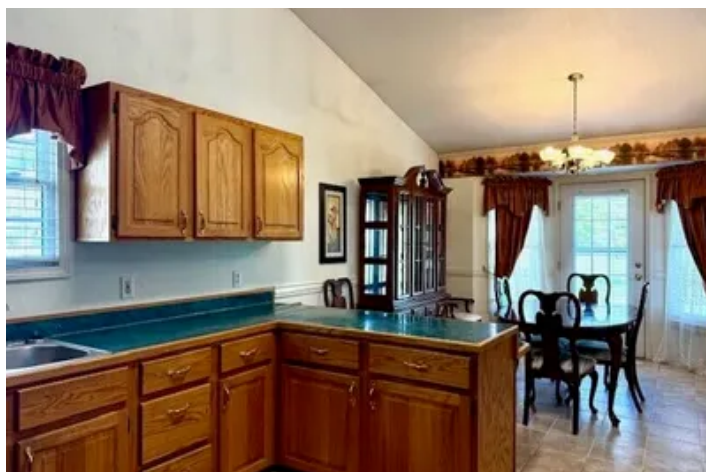
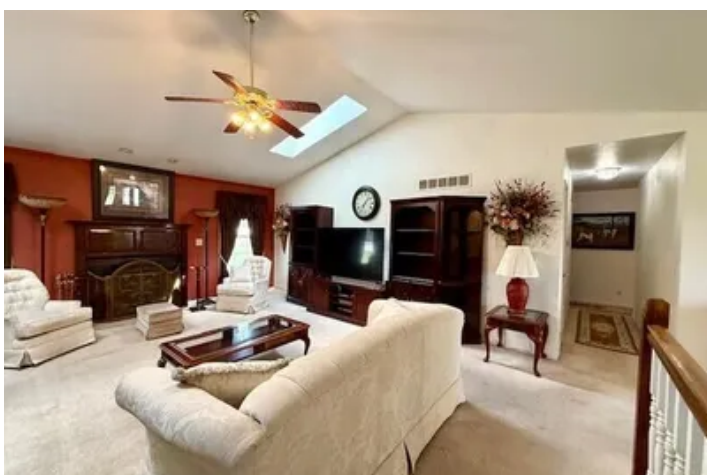
## **4 Bed/2 Bath Walkout Unfinished Basement 0.88 acre lot, Corner Lot Howell County Mountain View, MO / Howell County**

---

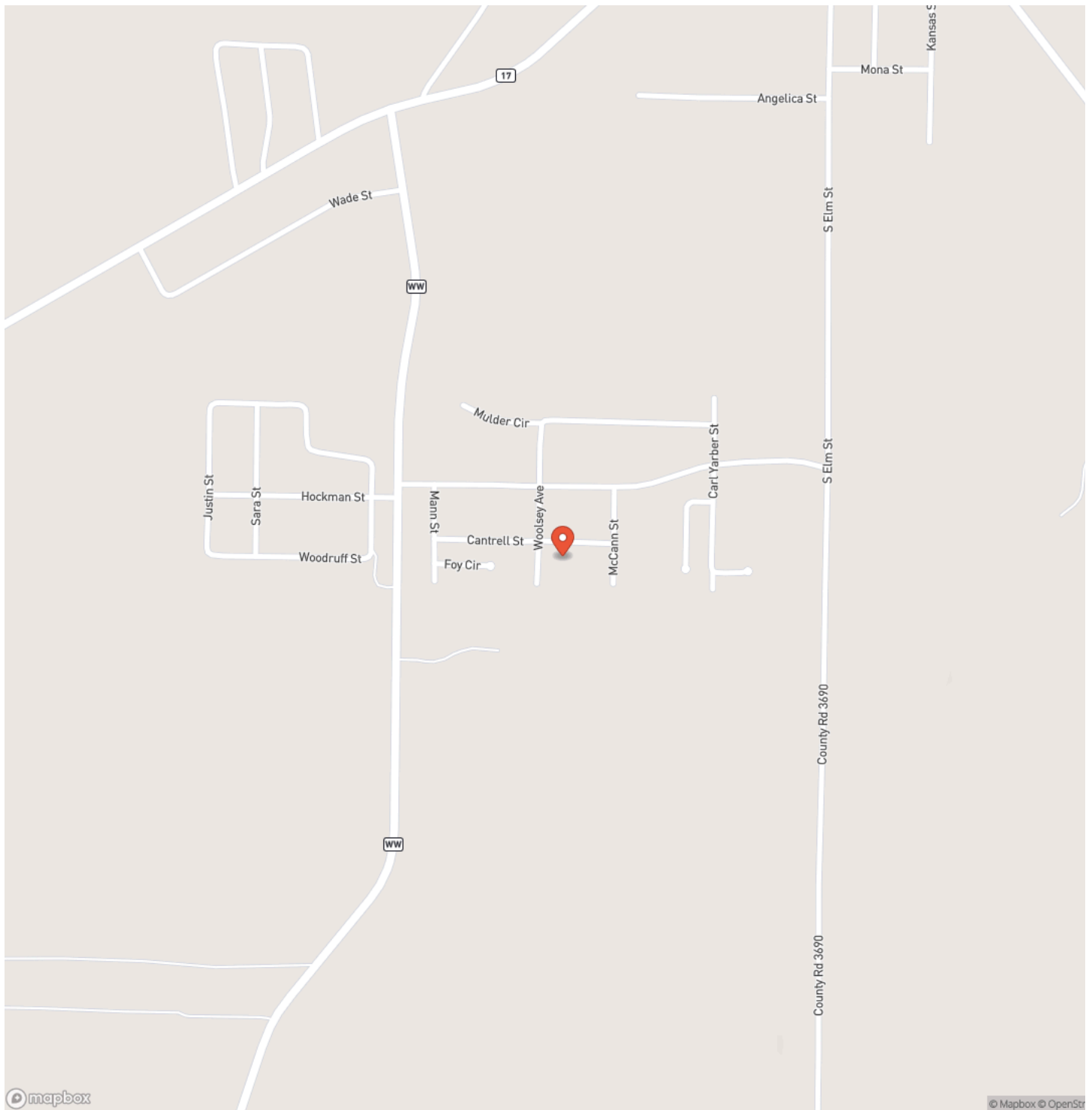
### **PROPERTY DESCRIPTION**

Welcome to 311 Cantrell, This residence offers convenience, comfort, and ample space for the whole family. Step inside to discover a spacious interior featuring a large entryway, Living Room which is adorned with a cozy fireplace - perfect for gathering with loved ones on chilly evenings. and Vaulted Ceilings. With four generously sized bedrooms, two full bathrooms, this home offers plenty of room for everyone to spread out and relax. Need a designated office (or 4th bedroom)? Look no further than the convenient office area, ideal for tackling tasks with ease. The unfinished basement allows you to add your personal touch for additional living space. Step outside to discover a sprawling yard, meticulously landscaped to create a serene outdoor oasis. Perfect for enjoying leisurely afternoons or hosting outdoor gatherings, the yard offers endless possibilities for enjoyment. Additional highlights of this property include a two-car attached garage and a storage building, providing ample space for storing belongings and equipment. With its unbeatable combination of location, space, and amenities, 311 Cantrell is the epitome of a perfect family home - just waiting for you to move in and make it your own. Don't miss out on this incredible opportunity!

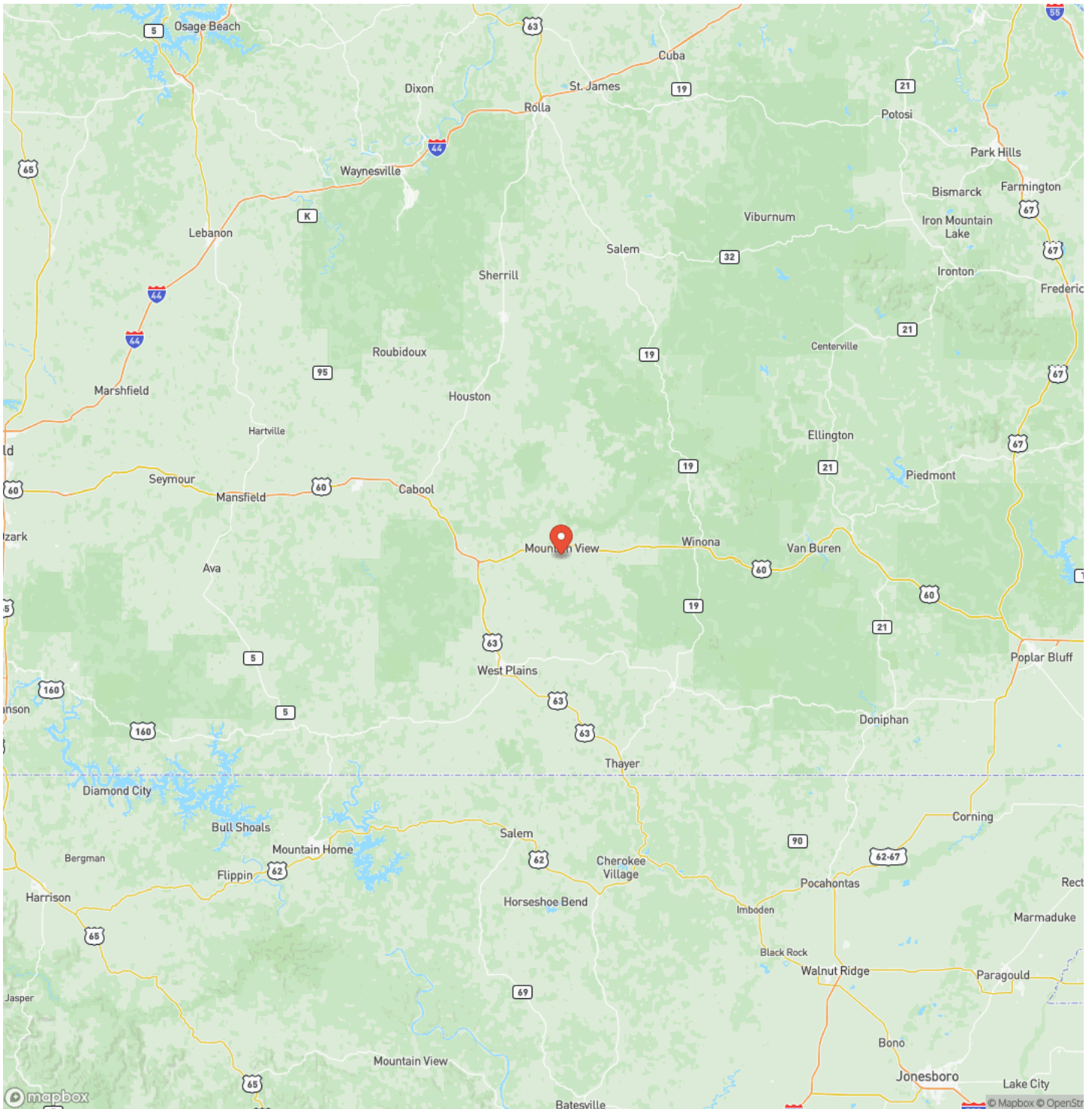
4 Bed/2 Bath Walkout Unfinished Basement 0.88 acre lot, Corner Lot Howell County  
Mountain View, MO / Howell County



## Locator Map



## Locator Map





4 Bed/2 Bath Walkout Unfinished Basement 0.88 acre lot, Corner Lot Howell County  
Mountain View, MO / Howell County

## Satellite Map



4 Bed/2 Bath Walkout Unfinished Basement 0.88 acre lot, Corner Lot Howell County  
Mountain View, MO / Howell County

LISTING REPRESENTATIVE  
For more information contact:

**Representative**  
Linda Francis  
  
**Mobile**  
(417) 274-0142  
  
**Email**  
lfrancis@mossyoakproperties.com  
  
**Address**  
412 W US 60 Ste E  
  
**City / State / Zip**



NOTES

Notes section with multiple horizontal lines for text entry.



[illegible]

**MORE INFO ONLINE:**  
**MossyOakProperties.com**

## **DISCLAIMERS**

Information in this brochure is provided solely for information purposes and does not constitute an offer to sell or advertise real estate outside the states in which broker or agent licensed. The information presented has been obtained from sources deemed to be reliable, but is not guaranteed or warranted by the agent, broker, or the sellers of these properties. This offering is subject to errors, omissions, prior sale, price change, correction or withdrawal from the market without notice. All references to age, square footage, income, expenses, acreage, carrying capacity, and land classification, etc. are approximate. Prospective buyers are chargeable with and expected to conduct their own independent investigation of the information and the property and to rely only on those results. Sellers reserve the right to accept or reject any and all offers without liability to any buyer or cooperating broker.

Maps are provided for illustration purposes only, the accuracy is not warranted. Parcels on interactive maps are not adjusted to match aerial backgrounds. This information is for reference purposes only and is not a legal document. Data maps contain errors. The seller and seller's agent are making known to all potential buyers that there may be variations between the location of the existing fence lines and the legal description of the deeded property. Seller and seller's agent make no warranties with regard to the location of the fence lines in relationship to the deeded property lines, nor does the Seller make any warranties or representations with regard to the specific acreage contained within the fenced property lines. Seller is selling the property in an "as is" condition, which includes the location of the fences as they exist. Boundaries shown on the accompanying maps are approximate, based on county parcel data. The maps are not to scale. The accuracy of the maps is not guaranteed. Prospective buyers are encouraged to verify fence lines, deeded property lines and acreages using a licensed surveyor at their own expense.



---

**Mossy Oak Properties Mozark Realty**  
947 N. Westwood Blvd.  
Poplar Bluff, MO 63901  
(573) 712-2252  
[MossyOakProperties.com](http://MossyOakProperties.com)

---