

17.7 Acres 4 Bed/3 Bath, Sunroom, 30x40 4 stall barn
Howell County
8057 County Road 3400
Mountain View, MO 65548

\$389,000
17.700± Acres
Howell County



MORE INFO ONLINE:

MossyOakProperties.com

**17.7 Acres 4 Bed/3 Bath, Sunroom, 30x40 4 stall barn Howell County
Mountain View, MO / Howell County**

SUMMARY

Address

8057 County Road 3400

City, State Zip

Mountain View, MO 65548

County

Howell County

Type

Residential Property, Recreational Land, Single Family, Horse Property

Latitude / Longitude

36.998423 / -91.742808

Taxes (Annually)

1114

Dwelling Square Feet

2000

Bedrooms / Bathrooms

4 / 3

Acreage

17.700

Price

\$389,000

Property Website

<https://mossyoakproperties.com/property/17-7-acres-4-bed-3-bath-sunroom-30x40-4-stall-barn-howell-county-howell-missouri/56152/>



MORE INFO ONLINE:

MossyOakProperties.com

**17.7 Acres 4 Bed/3 Bath, Sunroom, 30x40 4 stall barn Howell County
Mountain View, MO / Howell County**

PROPERTY DESCRIPTION

Ideal property for an equine/agricultural professional or aspiring hobby farmer. Located conveniently off of a paved road just West of Mountain View only minutes from town . The property features 17.7 acres a cozy ranch style home features 4 bedrooms, 3 bathrooms, (2 are master suite 1 has an office or gameroom area) sunroom and 21.6x29.3 2 car garage. The large windows located in the front of the home offers the perfect amount of natural sunlight while also showcasing the beautiful view. There are two exterior features such as a large 4 stall barn, windows at each stall on the extior wall, mats feed bunks. Paved driveways lined with pip fence, two ponds and a mixture of pasture and woods. Howell County



17.7 Acres 4 Bed/3 Bath, Sunroom, 30x40 4 stall barn Howell County
Mountain View, MO / Howell County

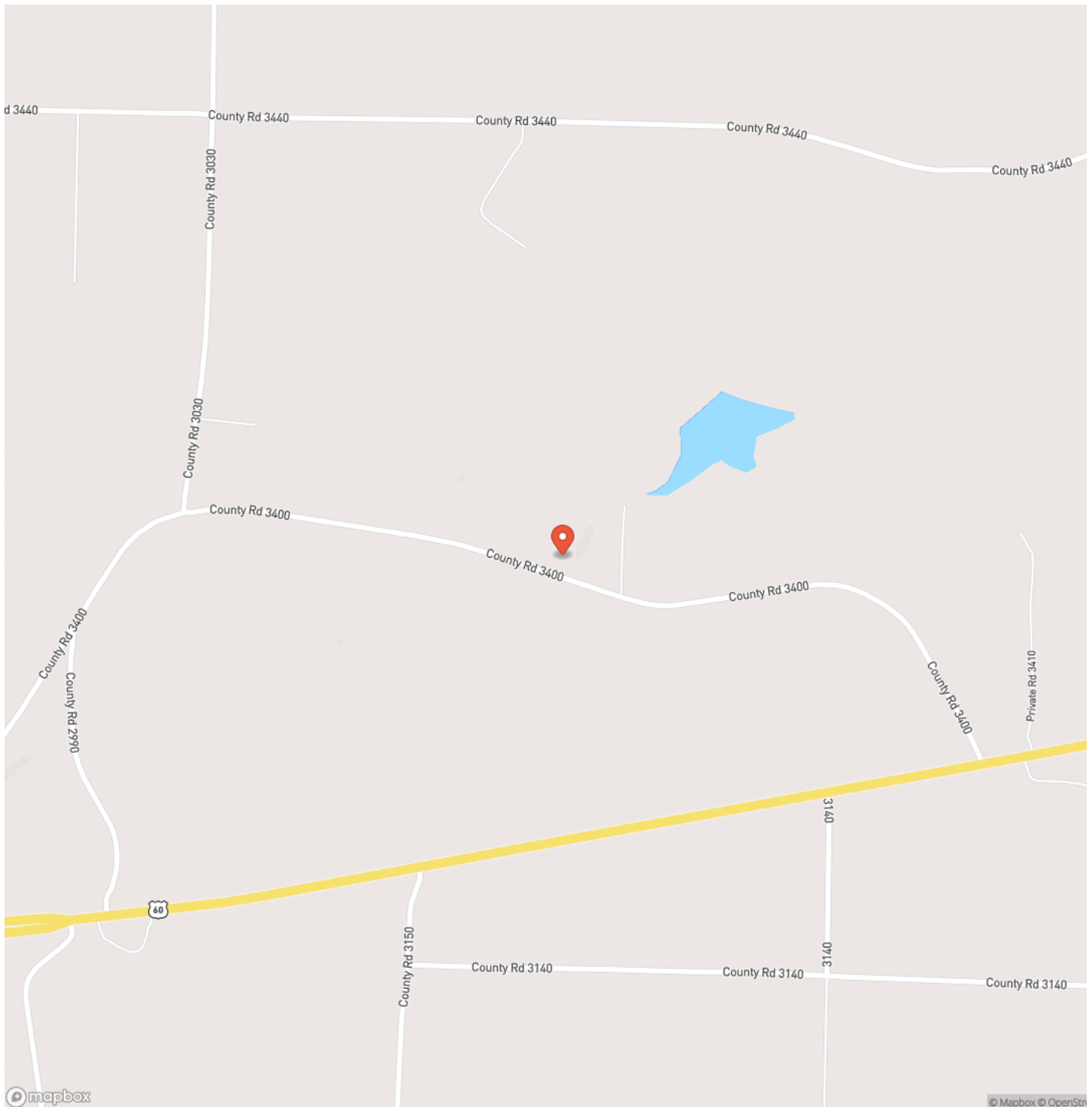


MORE INFO ONLINE:

MossyOakProperties.com

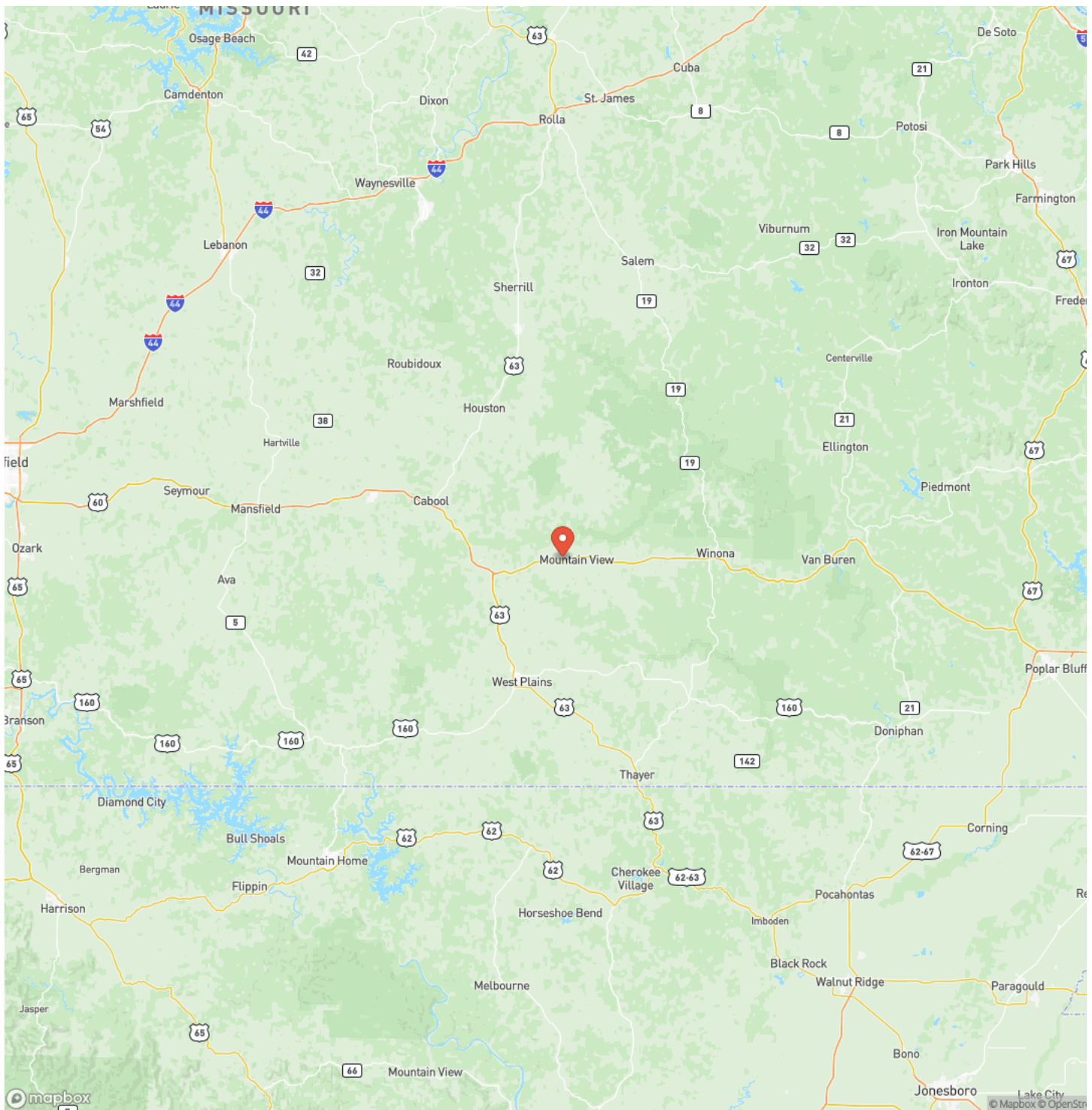
17.7 Acres 4 Bed/3 Bath, Sunroom, 30x40 4 stall barn Howell County
Mountain View, MO / Howell County

Locator Map



**17.7 Acres 4 Bed/3 Bath, Sunroom, 30x40 4 stall barn Howell County
Mountain View, MO / Howell County**

Locator Map

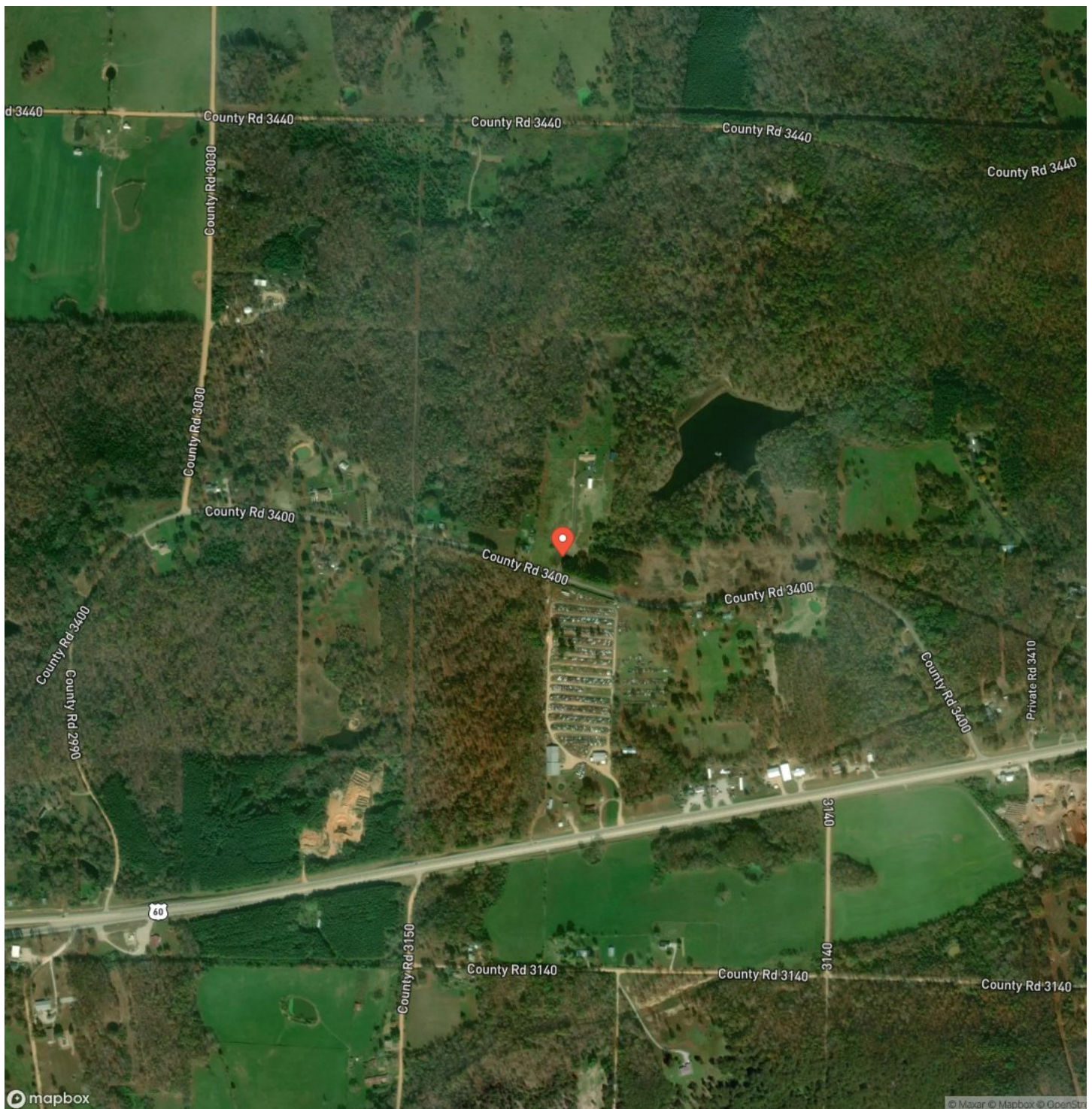


MORE INFO ONLINE:

MossyOakProperties.com

17.7 Acres 4 Bed/3 Bath, Sunroom, 30x40 4 stall barn Howell County
Mountain View, MO / Howell County

Satellite Map



**17.7 Acres 4 Bed/3 Bath, Sunroom, 30x40 4 stall barn Howell County
Mountain View, MO / Howell County**

LISTING REPRESENTATIVE

For more information contact:



Representative

Linda Francis

Mobile

(417) 274-0142

Email

lfrancis@mossyoakproperties.com

Address

412 W US 60 Ste E

City / State / Zip

Mountain View, MO 65548

NOTES



MORE INFO ONLINE:

MossyOakProperties.com

This image shows a full page of white paper with horizontal ruling lines. The lines are evenly spaced and run across the width of the page, typical of notebook or legal stationery. There are no margins, text, or other markings on the page.



DISCLAIMERS

Information in this brochure is provided solely for information purposes and does not constitute an offer to sell or advertise real estate outside the states in which broker or agent licensed. The information presented has been obtained from sources deemed to be reliable, but is not guaranteed or warranted by the agent, broker, or the sellers of these properties. This offering is subject to errors, omissions, prior sale, price change, correction or withdrawal from the market without notice. All references to age, square footage, income, expenses, acreage, carrying capacity, and land classification, etc. are approximate. Prospective buyers are chargeable with and expected to conduct their own independent investigation of the information and the property and to rely only on those results. Sellers reserve the right to accept or reject any and all offers without liability to any buyer or cooperating broker.

Maps are provided for illustration purposes only, the accuracy is not warranted. Parcels on interactive maps are not adjusted to match aerial backgrounds. This information is for reference purposes only and is not a legal document. Data maps contain errors. The seller and seller's agent are making known to all potential buyers that there may be variations between the location of the existing fence lines and the legal description of the deeded property. Seller and seller's agent make no warranties with regard to the location of the fence lines in relationship to the deeded property lines, nor does the Seller make any warranties or representations with regard to the specific acreage contained within the fenced property lines. Seller is selling the property in an "as is" condition, which includes the location of the fences as they exist. Boundaries shown on the accompanying maps are approximate, based on county parcel data. The maps are not to scale. The accuracy of the maps is not guaranteed. Prospective buyers are encouraged to verify fence lines, deeded property lines and acreages using a licensed surveyor at their own expense.



Mossy Oak Properties Mozark Realty
947 N. Westwood Blvd.
Poplar Bluff, MO 63901
(573) 712-2252
MossyOakProperties.com

