

**4 Bedroom Home with 59 +/- ac Farm For Sale in Ripley  
County, Missouri**  
1988 Ripley Route CC  
Doniphan, MO 63935

**\$519,900**  
59± Acres  
Ripley County





## 4 Bedroom Home with 59 +/- ac Farm For Sale in Ripley County, Missouri Doniphan, MO / Ripley County

### **SUMMARY**

#### **Address**

1988 Ripley Route CC

#### **City, State Zip**

Doniphan, MO 63935

#### **County**

Ripley County

#### **Type**

Farms, Single Family, Business Opportunity, Lot, Residential Property, Recreational Land

#### **Latitude / Longitude**

36.532734 / -90.937402

#### **Dwelling Square Feet**

2218

#### **Bedrooms / Bathrooms**

4 / 2

#### **Acreage**

59

#### **Price**

\$519,900

#### **Property Website**

<https://www.mossyoakproperties.com/property/4-bedroom-home-with-59-ac-farm-for-sale-in-ripley-county-missouri-ripley-missouri/77422/>



## 4 Bedroom Home with 59 +/- ac Farm For Sale in Ripley County, Missouri Doniphan, MO / Ripley County

---

### **PROPERTY DESCRIPTION**

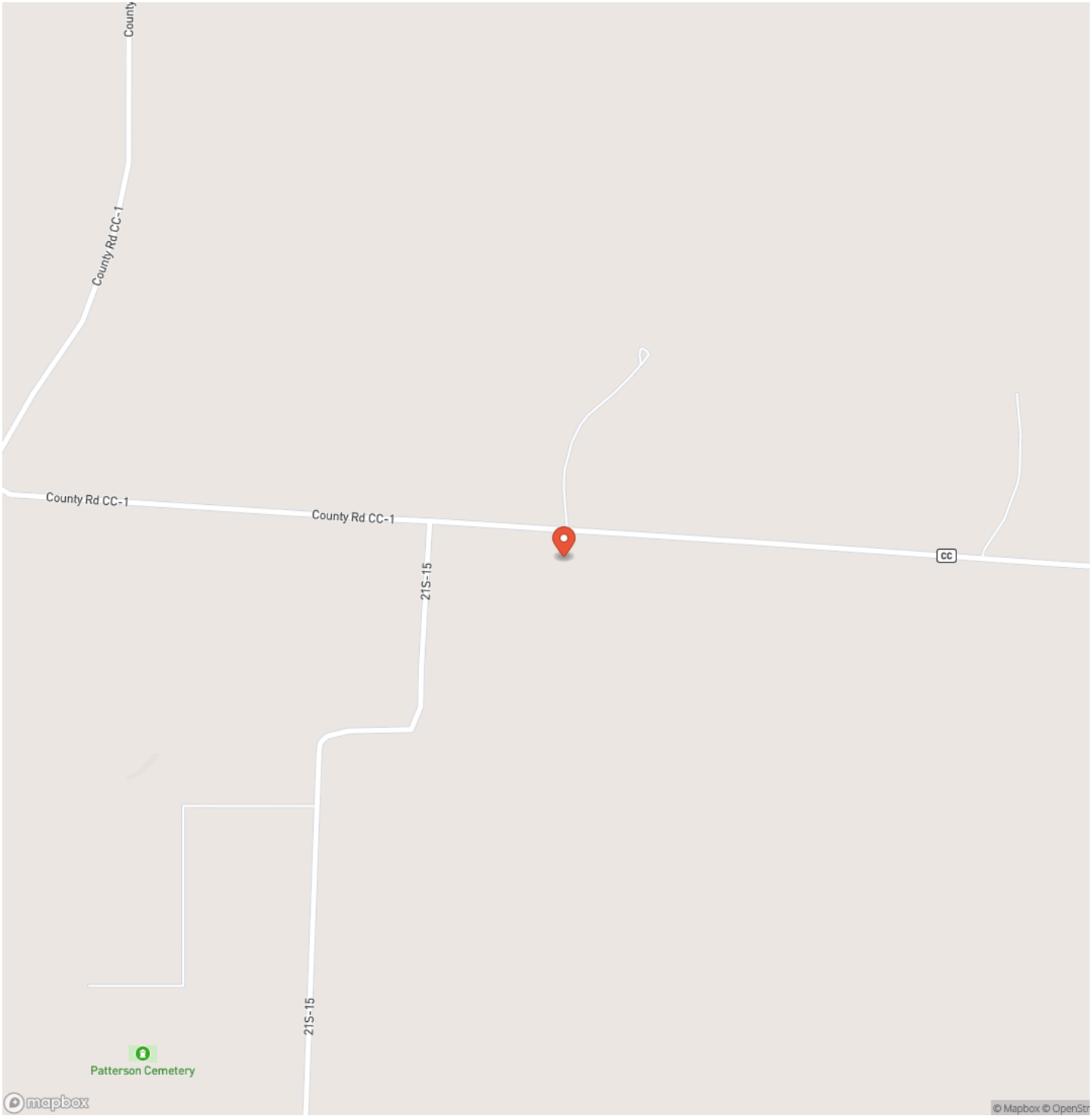
4 bedroom home with 59 +/- acre farm for sale in Ripley County, Missouri. - Located on pavement West of Doniphan in the beautiful rolling countryside of Poyner, this peaceful tract of pasture is fenced with 3 ponds and a wet-weather creek. A large barn serves as storage and functions to serve livestock, plus 50x30 insulated and heated workshop and a shed with kennel assists in fueling the Hardie-stove. A well appointed ranch style home has that 'open concept' living area. Cozy up to a gas fireplace in the uber-comfy vaulted living room while you watch the sun set as the herd graze back toward the barn. Some updates include, but are not limited to: appliances, flooring, trim, moldings, bath & electrical fixtures and more. The covered back deck is ideal for cooking and entertainment, or keep it quiet while you relax in the swing bed. Only a couple of neighbors within any direction of your immediate sight, and you can drink water from you own private well. Welcome to the country.



4 Bedroom Home with 59 +/- ac Farm For Sale in Ripley County, Missouri  
Doniphan, MO / Ripley County

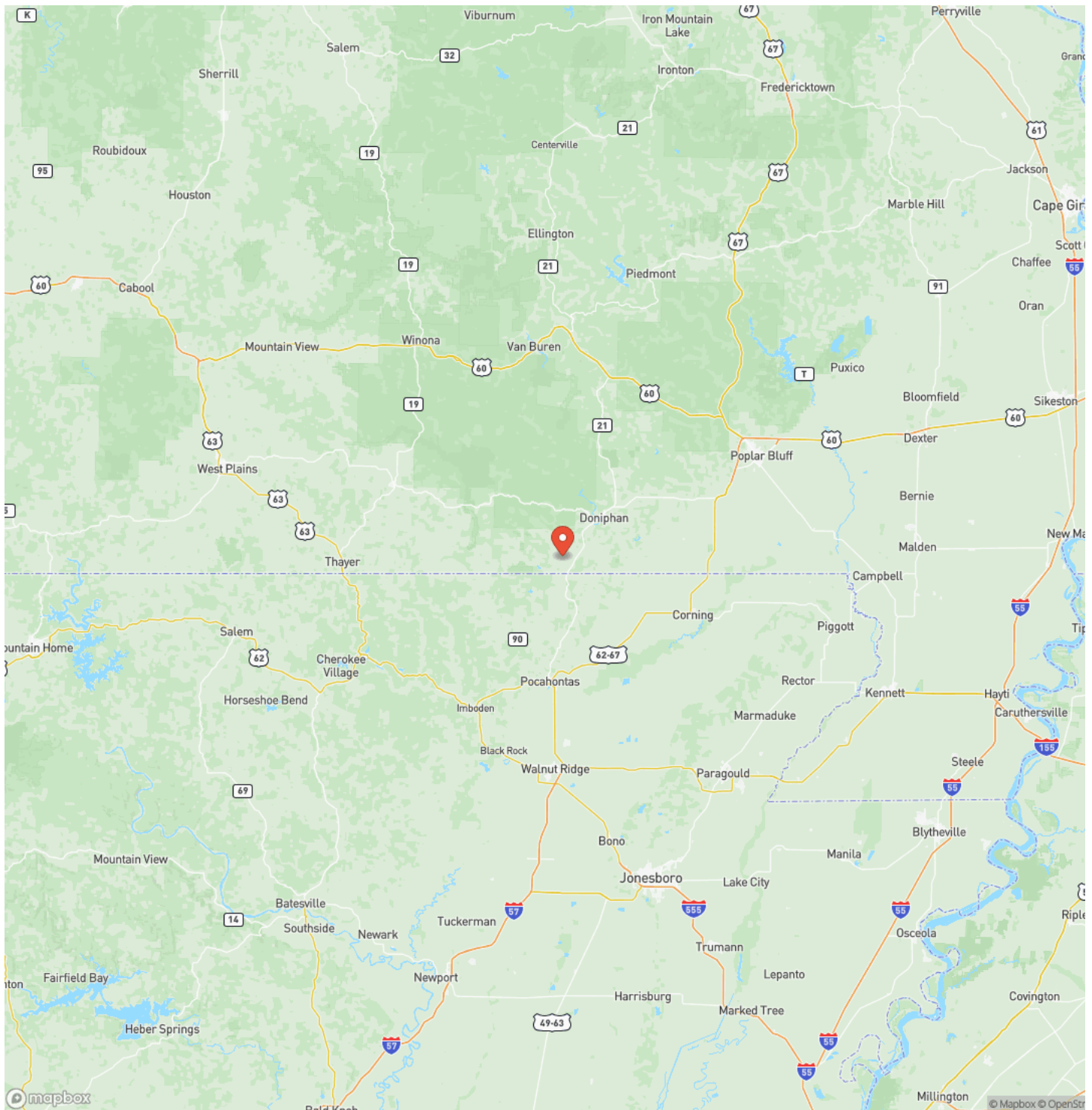


# Locator Map



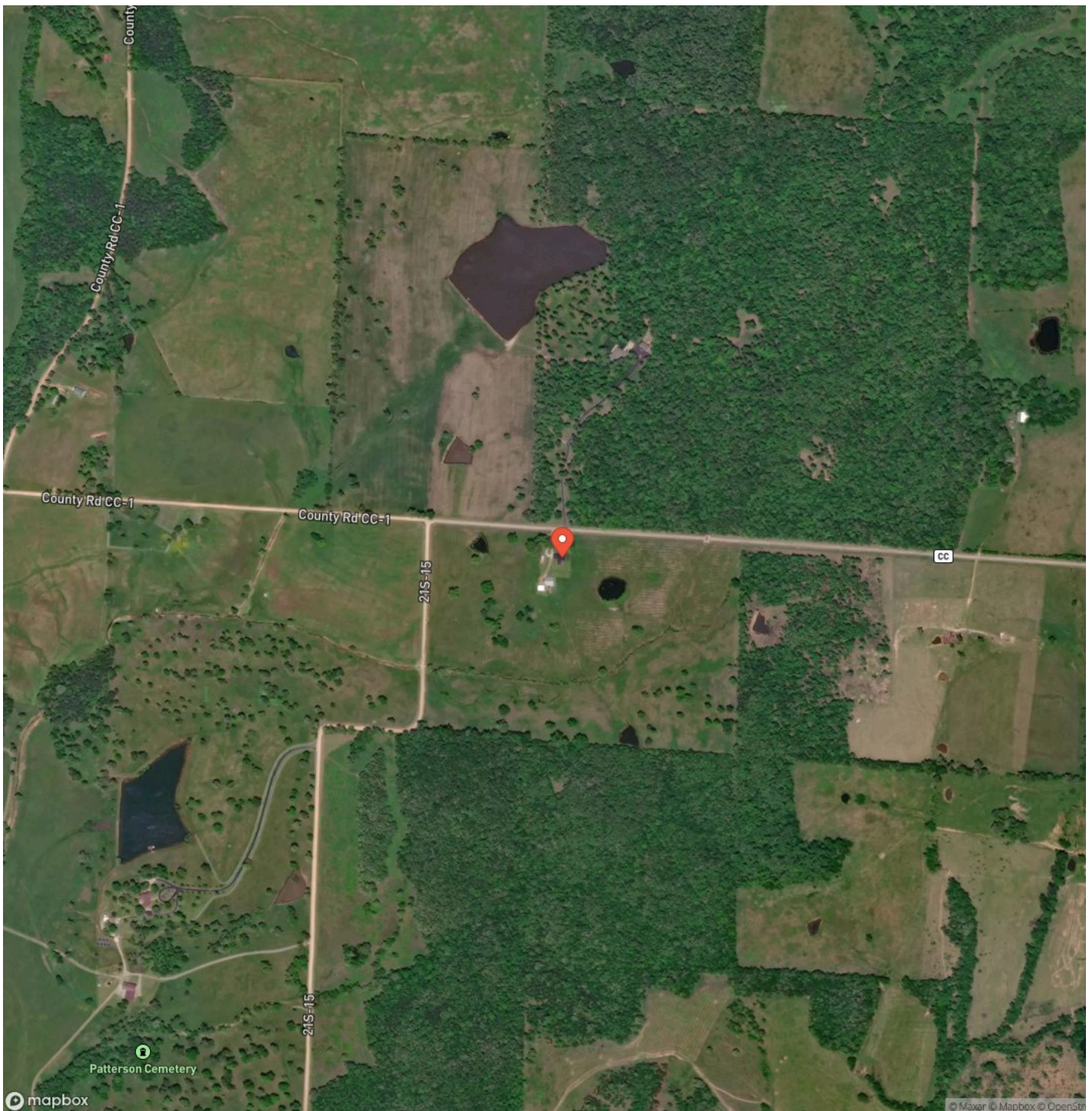
## Doniphan, MO / Ripley County

## Locator Map





## Satellite Map



## 4 Bedroom Home with 59 +/- ac Farm For Sale in Ripley County, Missouri Doniphan, MO / Ripley County

## LISTING REPRESENTATIVE

**For more information contact:**



### Representative

Lucas Edington

## Mobile

(573) 718-2800

## Office

(573) 712-2252

## Email

ledington@mossyoakproperties.com

**Address**

947 N. Westwood Blvd.

## City / State / Zip

## NOTES

This image shows a single page from a notebook or ledger. It features ten evenly spaced, solid black horizontal lines running across the entire width of the page. The background is white, creating a series of nine uniform rectangular bands suitable for writing. There are no margins, text, or other markings present.



## This image shows a single sheet of white paper with horizontal ruling lines. The lines are evenly spaced and run across the width of the page. There are no margins, text, or other markings on the paper.



**MORE INFO ONLINE:**  
**MossyOakProperties.com**

## **DISCLAIMERS**

Information in this brochure is provided solely for information purposes and does not constitute an offer to sell or advertise real estate outside the states in which broker or agent licensed. The information presented has been obtained from sources deemed to be reliable, but is not guaranteed or warranted by the agent, broker, or the sellers of these properties. This offering is subject to errors, omissions, prior sale, price change, correction or withdrawal from the market without notice. All references to age, square footage, income, expenses, acreage, carrying capacity, and land classification, etc. are approximate. Prospective buyers are chargeable with and expected to conduct their own independent investigation of the information and the property and to rely only on those results. Sellers reserve the right to accept or reject any and all offers without liability to any buyer or cooperating broker.

Maps are provided for illustration purposes only, the accuracy is not warranted. Parcels on interactive maps are not adjusted to match aerial backgrounds. This information is for reference purposes only and is not a legal document. Data maps contain errors. The seller and seller's agent are making known to all potential buyers that there may be variations between the location of the existing fence lines and the legal description of the deeded property. Seller and seller's agent make no warranties with regard to the location of the fence lines in relationship to the deeded property lines, nor does the Seller make any warranties or representations with regard to the specific acreage contained within the fenced property lines. Seller is selling the property in an "as is" condition, which includes the location of the fences as they exist. Boundaries shown on the accompanying maps are approximate, based on county parcel data. The maps are not to scale. The accuracy of the maps is not guaranteed. Prospective buyers are encouraged to verify fence lines, deeded property lines and acreages using a licensed surveyor at their own expense.



---

**Mossy Oak Properties Mozark Realty**  
947 N. Westwood Blvd.  
Poplar Bluff, MO 63901  
(573) 712-2252  
[MossyOakProperties.com](http://MossyOakProperties.com)

---